

CERTIFICATE OF LOCATION OF GOVERNMENT CORNER

County of Anoka

State of Minnesota

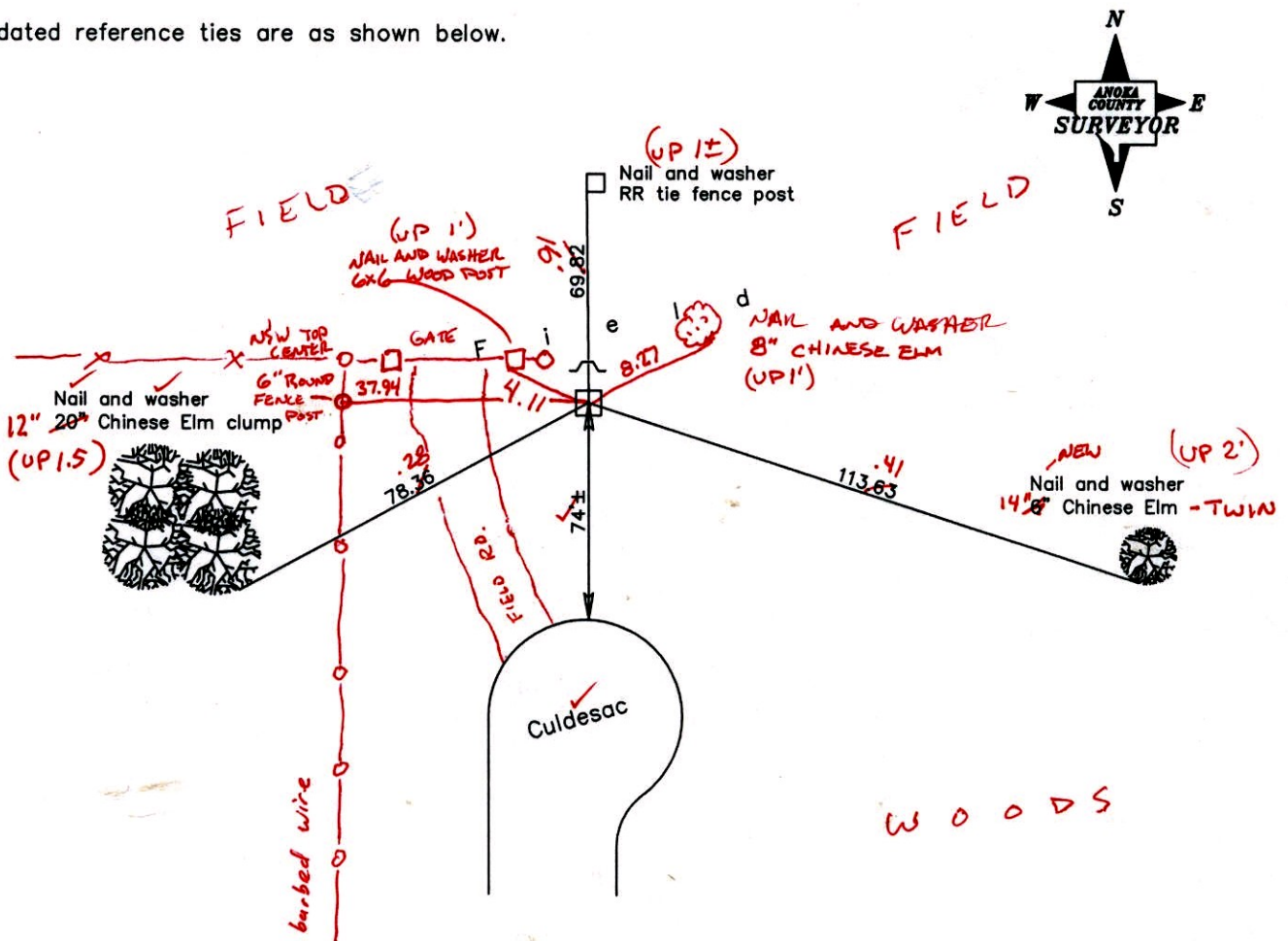
Northeast Corner of Sec. 32 Township 34 Range 24

On the 7th day of June, 1961, the described corner was evidenced by a 6" X 6" granite monument

and to perpetuate the location of said corner, at the exact location thereof, a permanent marker was placed consisting of the same granite monument (down $2\frac{1}{2}$ ') with a sign and post on the north side

AND on the ___ day of _____, _____, said permanent marker was _____

Updated reference ties are as shown below.



4-2-14
BK-55
T/S

Revised date
7/21/92
5/22/97
7/15/97

N.A.D. 1983 Coordinates (1996 Adjustment)	
County Project Coordinates	
Northing	232693.2321
Easting	479242.2438
Date	8/15/01

I hereby certify that this United States public land survey monument record is correct and complete to the best of my knowledge and belief.

_____, Date _____

_____, Anoka County Surveyor

Minnesota License Number _____

VRS 3D Qual: 0.06 N: 232693.1567
E: 479242.3053

CERTIFICATE OF LOCATION OF GOVERNMENT CORNER

County of Anoka

State of Minnesota

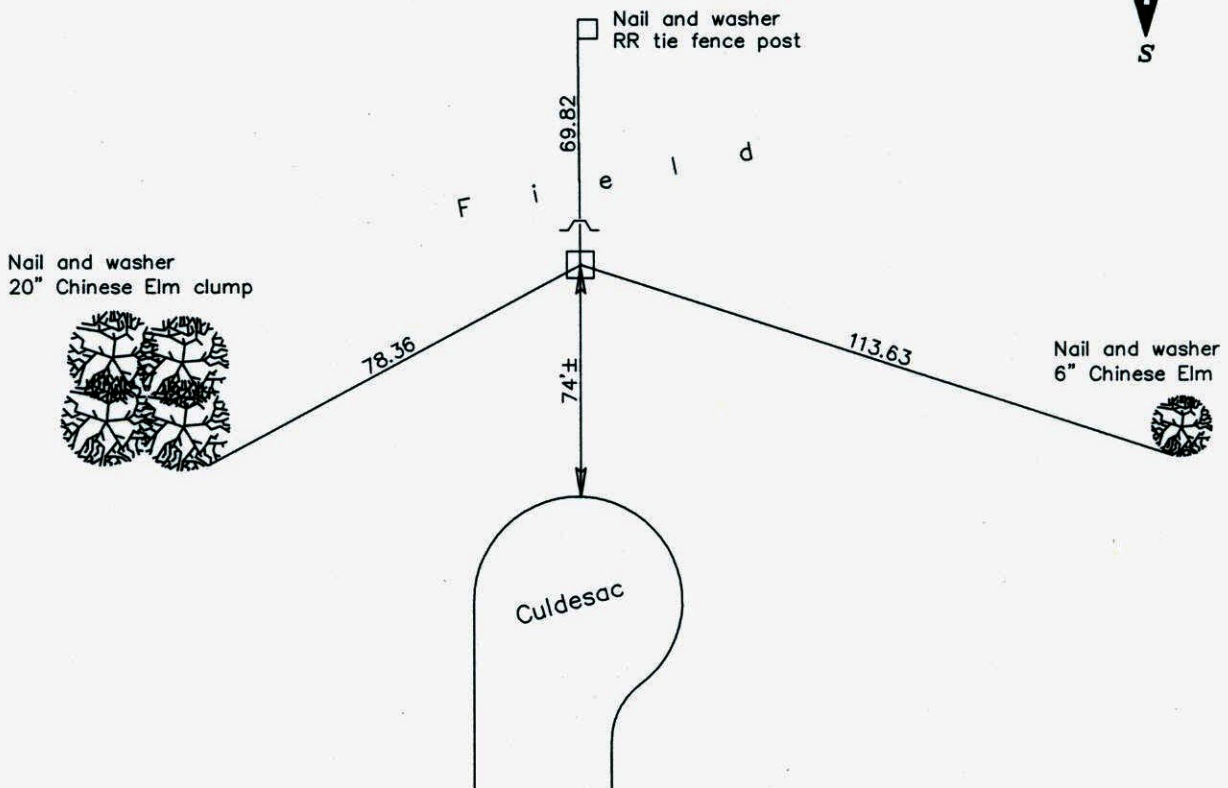
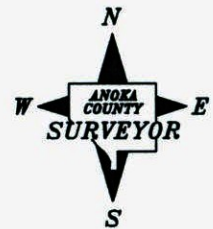
Northeast Corner of Sec. 32 Township 34 Range 24

On the 7th day of June, 1961, the described corner was evidenced by a 6" X 6" granite monument

and to perpetuate the location of said corner, at the exact location thereof, a permanent marker was placed consisting of the same granite monument (down 1'±) with a sign and post on the north side

AND on the ___ day of _____, _____, said permanent marker was _____

Updated reference ties are as shown below.



Revised date

7/21/92
5/22/97
7/15/97

N.A.D. 1983 Coordinates
(1996 Adjustment)

County Project Coordinates	
Northing	<u>232693.2321</u>
Easting	<u>479242.2438</u>
Date	<u>8/15/01</u>

I hereby certify that this United States public land survey monument record is correct and complete to the best of my knowledge and belief.

_____ Date _____
 _____, Anoka County Surveyor
 Minnesota License Number _____

CERTIFICATE OF LOCATION OF GOVERNMENT CORNER

County of Anoka

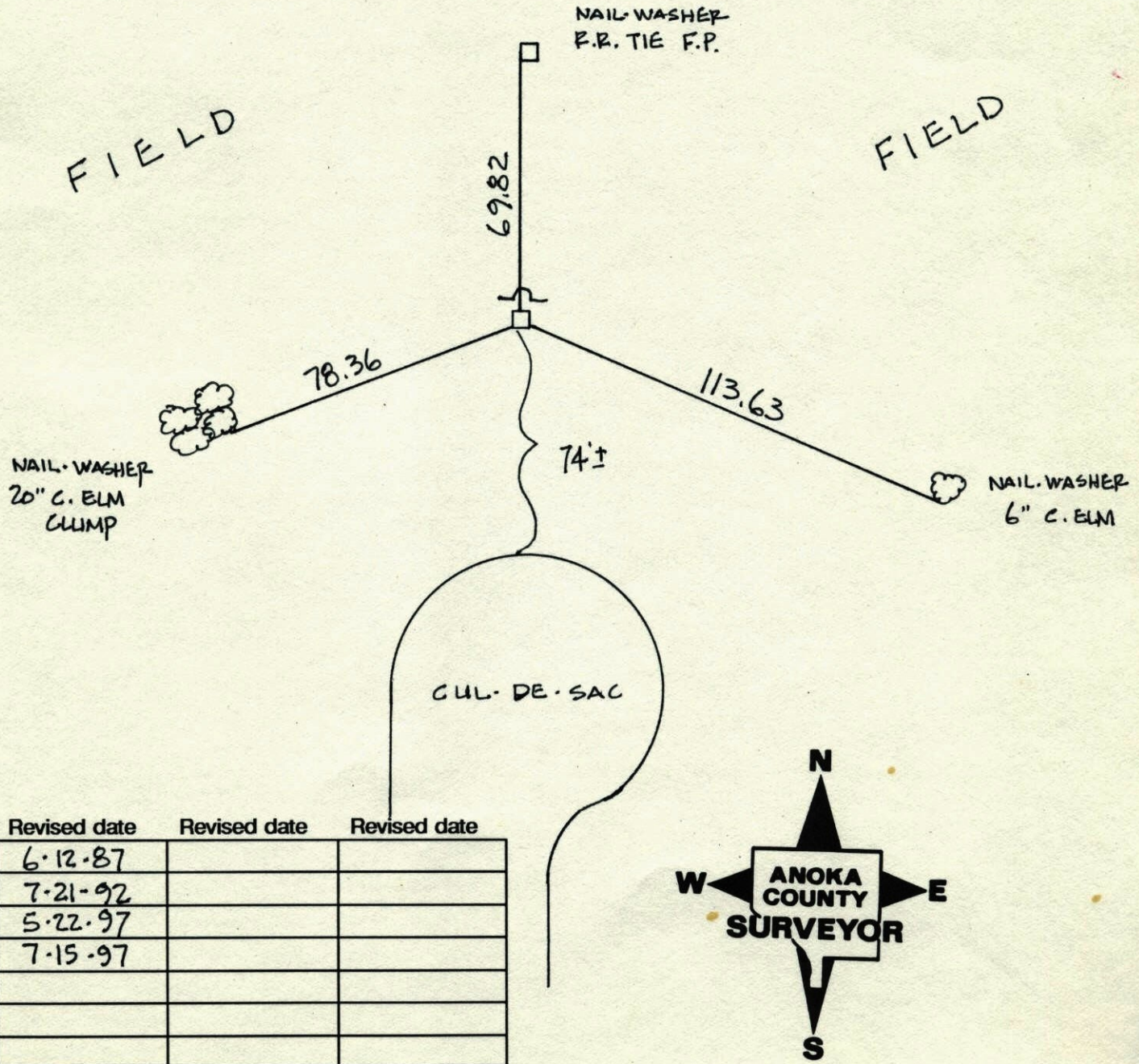
State of Minnesota

NORTHEAST Corner of Sec. 32 Township 34 Range 24

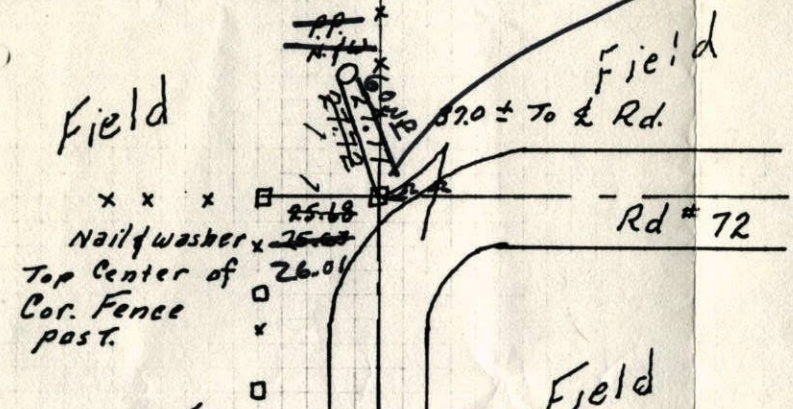
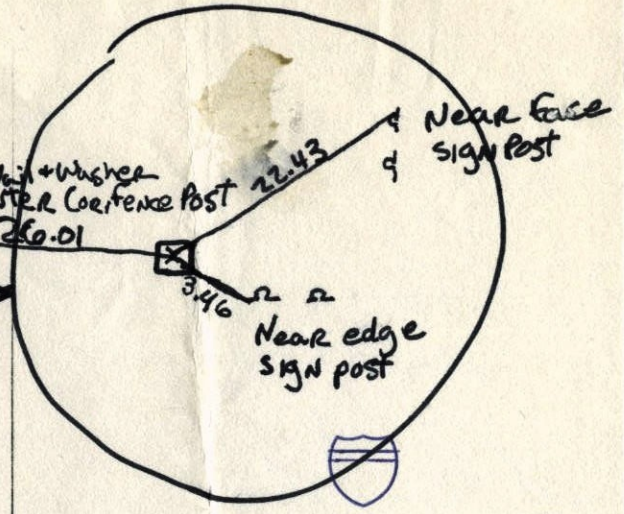
I hereby certify that on the 7TH day of JUNE, 19 61, I found the described corner which was evidenced by 6" X 6" GRANITE

and I further certify that to perpetuate the location of said corner, I did, at the exact location thereof, place a permanent marker consisting of GRANITE (DOWN 1.1')
SIGN AND POST ON NORTH SIDE

which reference or witness monuments are located in the manner following:



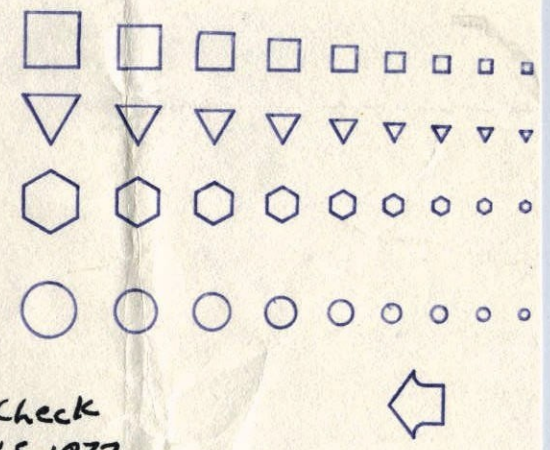
N.E. Cor Sec 32-34-24 St. Francis
 Found 6" x 6" Granite Mon. down 1.5'
 Set 14" irons on N & S Faces of Mon.
 7 June 1961
 R. O. Freeman
 M. D. Anderson



PASTURE
 Tie Check
 June 4, 1974
 R. Farmer
 J. Boettcher
 B. Schaffer

Tie check
 Sept. 1, 1965
 H. Larson
 S. Dunlop

Tie Check
 June 30, 1970
 P. Powell
 R. Brien
 W. Weslander



Tie Check
 MAY 5, 1977
 D. DAHL
 S. BRIEN

ROLAND W. ANDERSON
 COUNTY SURVEYOR
 ANOKA COUNTY, MINNESOTA

TEMPERATURE CORRECTED
 AND HORIZONTALLY
 TAPED MEASUREMENTS

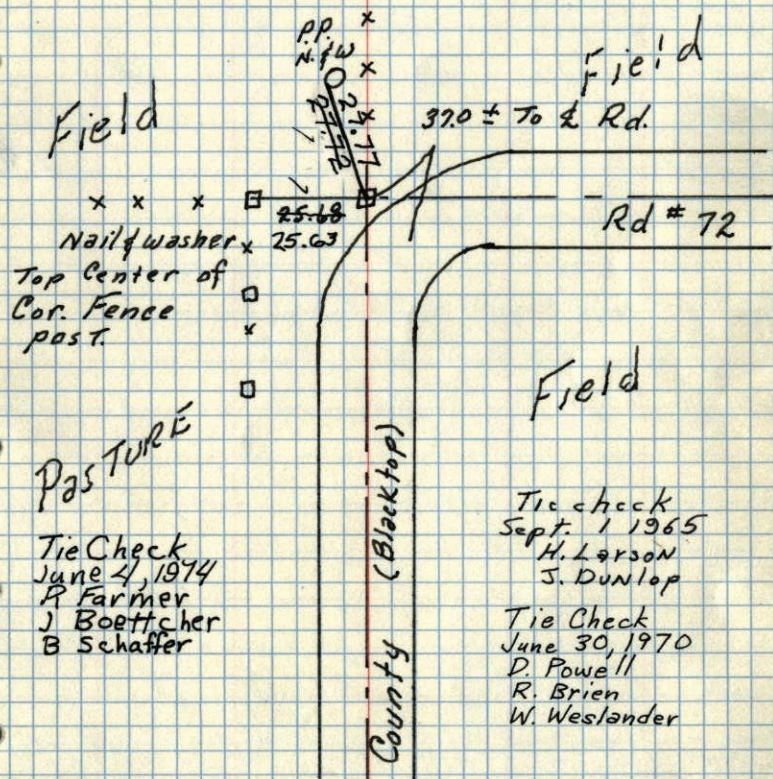
N.E. Cor Sec 32-34-24 St. Francis

Found 6"x6" Granite Mon. down 1.5'±
Set 14" irons on N & S Faces of Mon.

7 June 1961

R. O. Freeman

M. D. Anderson



ROLAND W. ANDERSON
COUNTY SURVEYOR
ANOKA COUNTY, MINNESOTA

TEMPERATURE CORRECTED
AND HORIZONTALLY
TAPED MEASUREMENTS

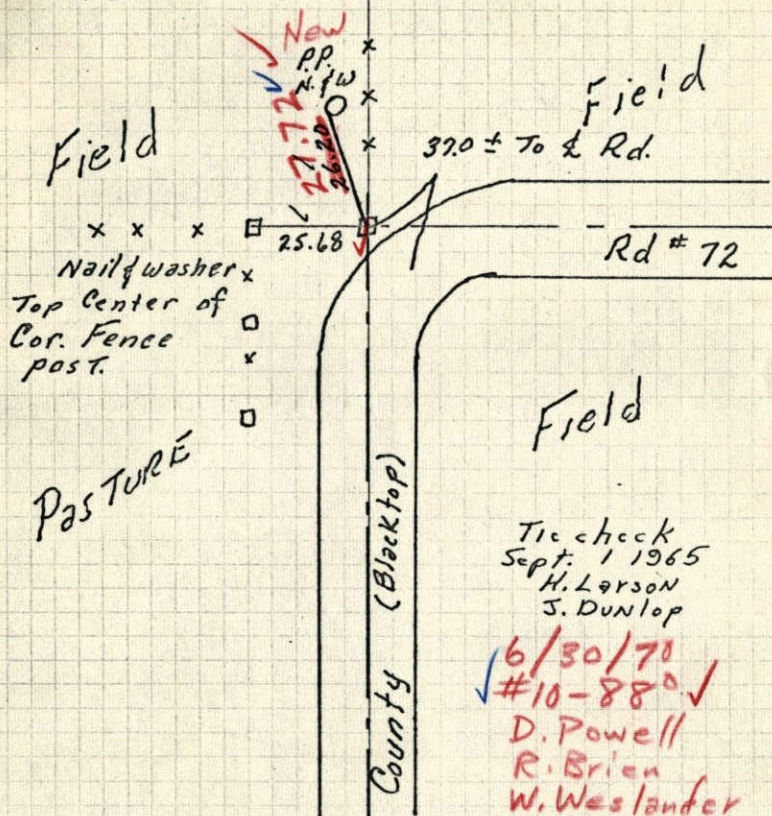
N.E. Cor Sec 32-34-24 St. Francis

Found 6"x6" Granite Mon. down 1.5'±
Set 14" irons on N & S Faces of Mon.

7 June 1961

R. O. Freeman

M. D. Anderson



ROLAND W. ANDERSON
COUNTY SURVEYOR
ANOKA COUNTY, MINNESOTA

TEMPERATURE CORRECTED
AND HORIZONTALLY
TAPED MEASUREMENTS

7 June 1961
Freeman. Anderson
+68°

NE Cor Sec 32-34-24 St. Francis
Found 6" x 6" Granite Mon down 1.5'
Set 14" irons on N & S Face of Mon.

