

# CERTIFICATE OF LOCATION OF GOVERNMENT CORNER

County of Anoka State of Minnesota

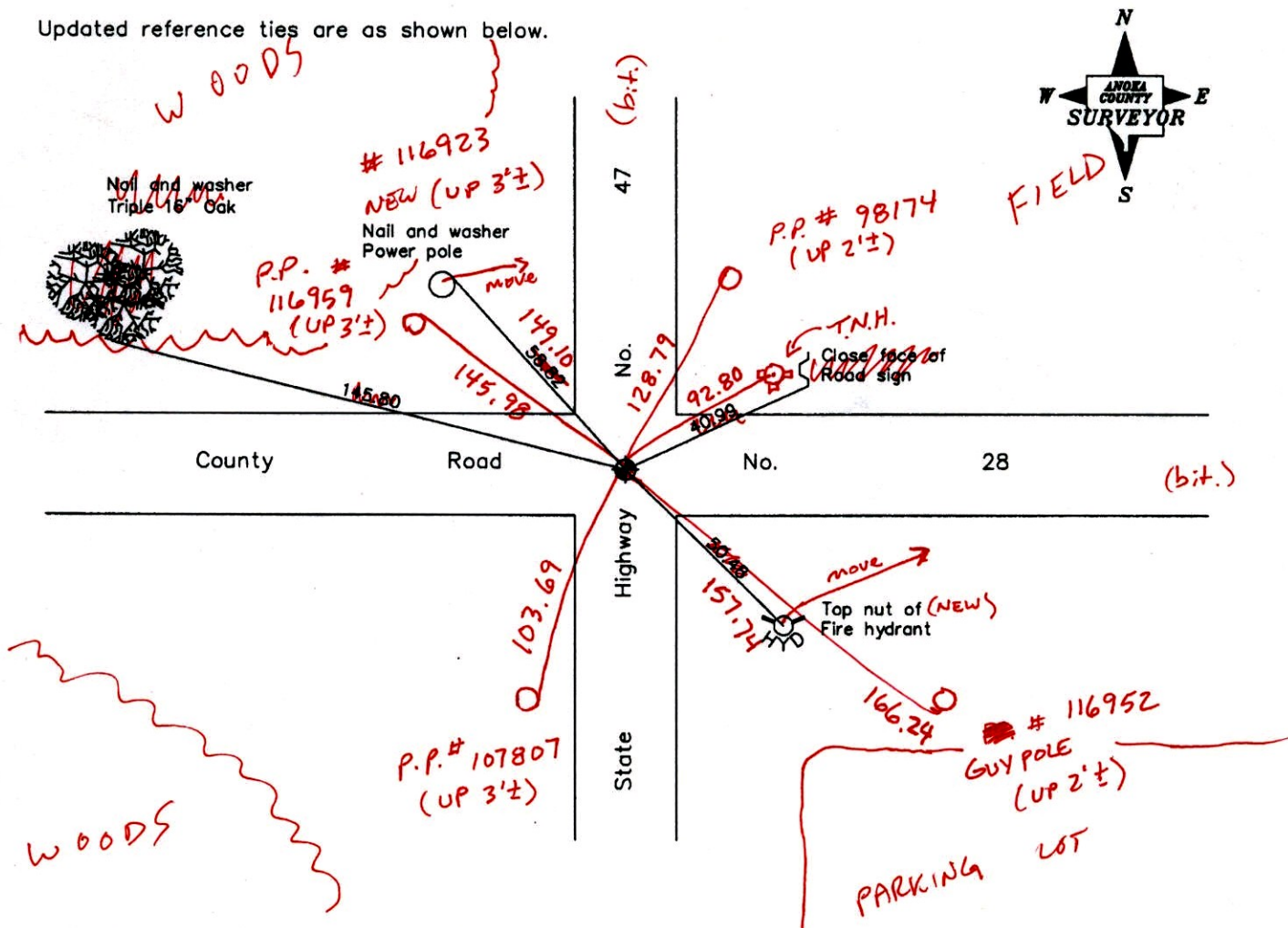
## Northeast Corner of Sec. 31 Township 34 Range 24

On the 19th day of May, 1966, the described corner was evidenced by area resurvey

and to perpetuate the location of said corner, at the exact location thereof, a permanent marker was placed consisting of a cast iron monument

AND on the 13th day of April, 2006, said permanent marker was found and the ties were updated

Updated reference ties are as shown below.



3-13-14  
BK-SS  
T/T VRS

Revised date	
	7/20/92
	7/16/97
	4/13/06

N.A.D. 1983 Coordinates (1996 Adjustment)	
County Project Coordinates	
Northing	<u>232693.9943</u>
Easting	<u>473996.3988</u>
Date	<u>8/27/01</u>

I hereby certify that this United States public land survey monument record is correct and complete to the best of my knowledge and belief.

Date 4/13/06

Larry D. Holium, Anoka County Surveyor  
 Minnesota License Number 18165

VRS 3DR = 0.04      N = 232694.0206      E = 473996.3531

# CERTIFICATE OF LOCATION OF GOVERNMENT CORNER

County of Anoka

State of Minnesota

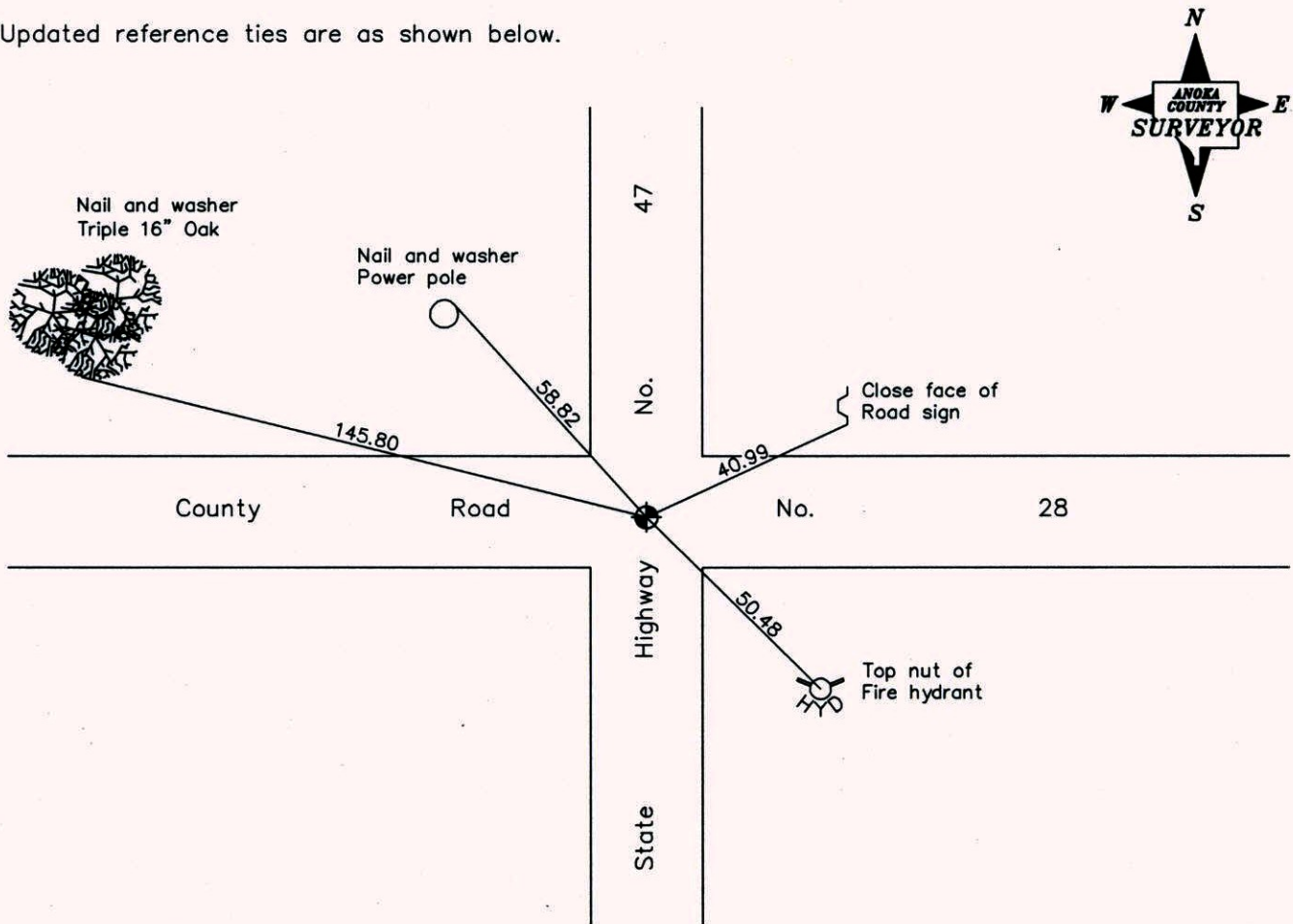
Northeast Corner of Sec. 31 Township 34 Range 24

On the 19th day of May, 1966, the described corner was evidenced by area resurvey

and to perpetuate the location of said corner, at the exact location thereof, a permanent marker was placed consisting of a cast iron monument

AND on the 13th day of April, 2006, said permanent marker was found and the ties were updated

Updated reference ties are as shown below.



**Revised date**

7/20/92
7/16/97
4/13/06

**N.A.D. 1983 Coordinates  
(1996 Adjustment)**

County Project Coordinates
Northing <u>232693.9943</u>
Easting <u>473996.3988</u>
Date <u>8/27/01</u>

I hereby certify that this United States public land survey monument record is correct and complete to the best of my knowledge and belief.

*Larry D. Hoium* Date 4/13/06  
 \_\_\_\_\_, Anoka County Surveyor  
 Minnesota License Number 18165

# CERTIFICATE OF LOCATION OF GOVERNMENT CORNER

County of Anoka

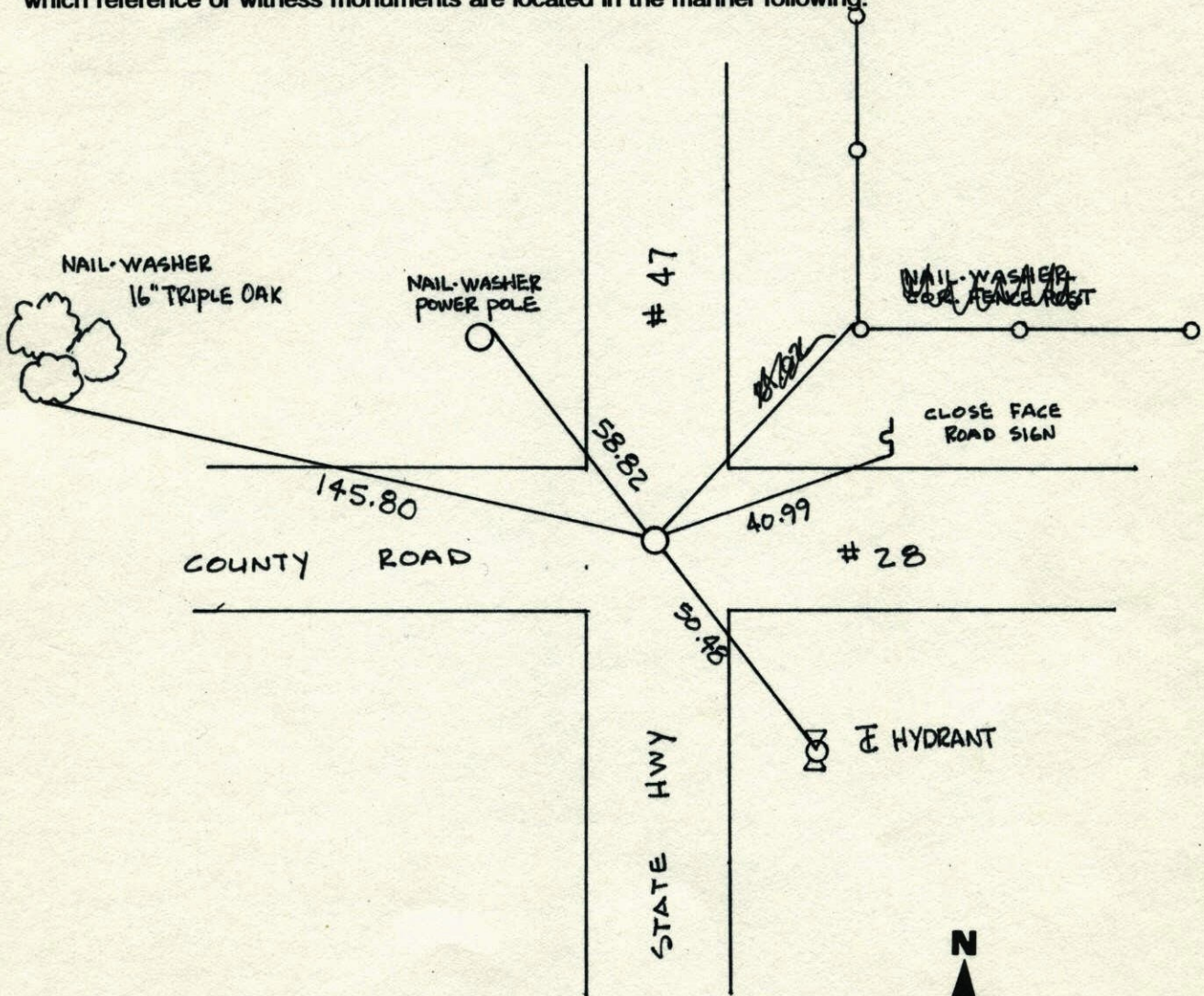
State of Minnesota

NORTHEAST Corner of Sec. 31 Township 34 Range 24

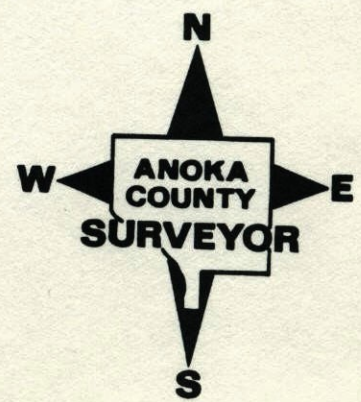
I hereby certify that on the 19<sup>TH</sup> day of MAY, 19 66, I found the described corner which was evidenced by AREA RESURVEY

and I further certify that to perpetuate the location of said corner, I did, at the exact location thereof, place a permanent marker consisting of CAST IRON MONUMENT

which reference or witness monuments are located in the manner following:



Revised date	Revised date	Revised date
10-5-76		
5-5-77		
5-26-81		
6-11-87		
7-20-92		
7-16-97		
4-13-06		

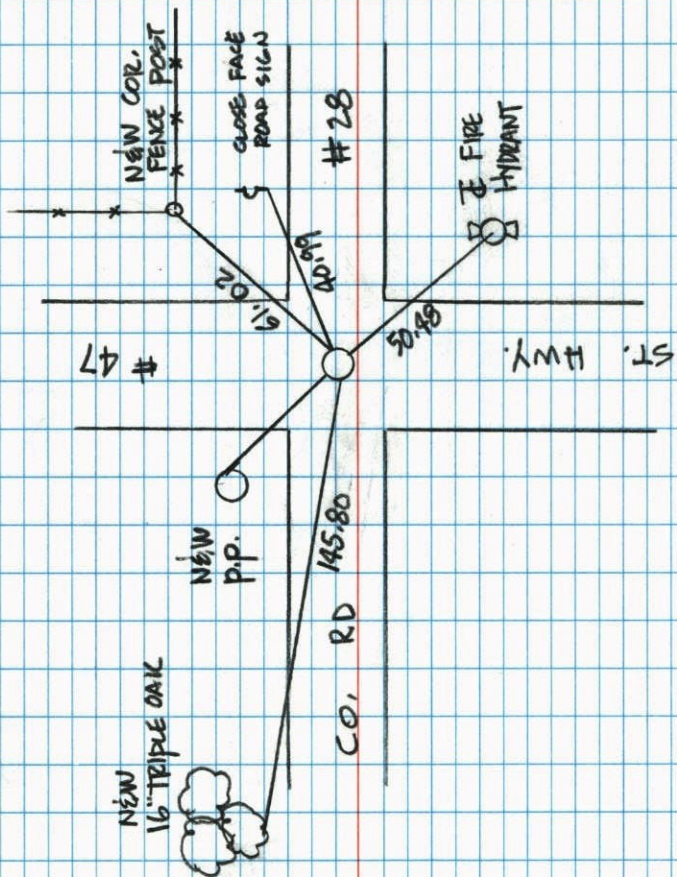


NORTHEAST COR. SEC 31 T 34 R 24

RETIED CAST IRON MONUMENT

NORTH

7-16-97  
H. ASKEW  
L. GRAYSON



N.E. COR. SEC. 31 T. 34 R. 24

SET CAST IRON MONUMENT FLUSH IN

☑☑ BLACKTOP ROADS FROM AREA RESURVEY

P.K. NAILS 2.00' NORTH AND EAST

\* MONUMENT RAISED 10-5-76 H. LARSON

5-19-66  
M.D. ANDERSON  
H.J. LARSON

TIE CHECK  
5-5-77  
D. DAHL  
S. BRIEN

NAIL AND WASHER  
16" TRI. OAK

NAIL AND WASHER  
POWER POLE

NAIL AND WASHER  
POWER POLE

80  
145.88

Co. Rd. # 28

Tie Check  
5-26-81  
P. ROSS  
P. HARVEY

STATE HWY 47

CLOSE FACE STOP SIGN

NAIL AND WASHER  
10" TWIN OAK

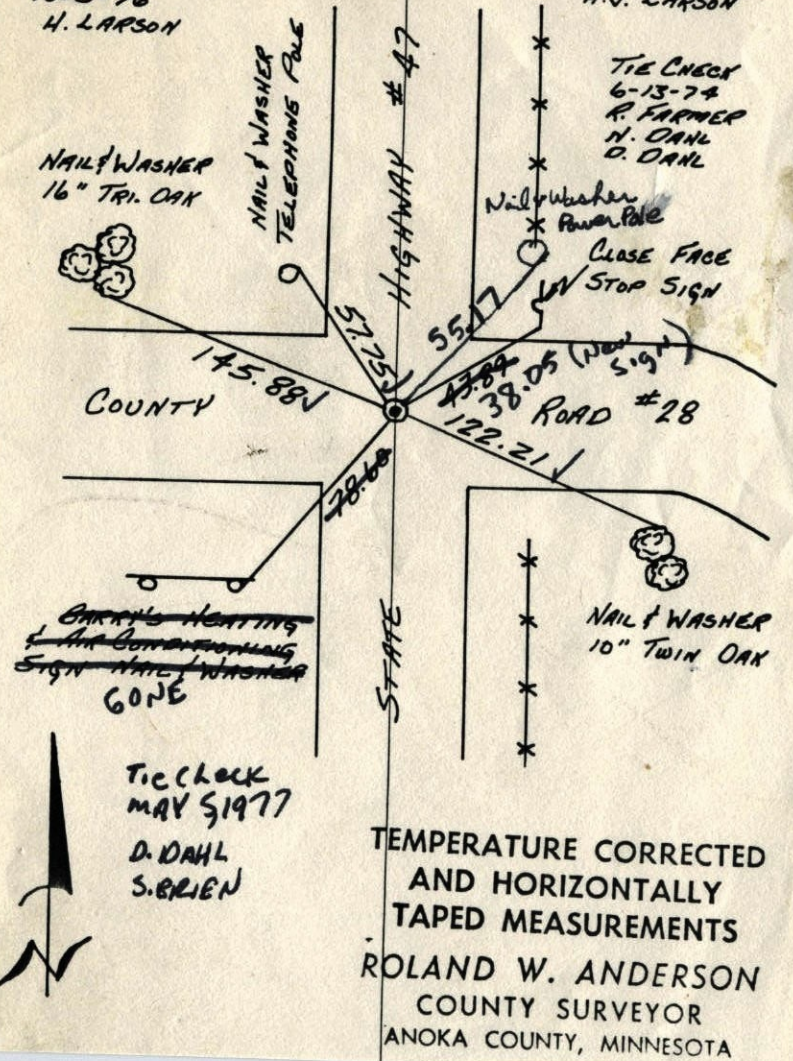
TEMPERATURE CORRECTED  
AND HORIZONTALLY  
TAPED MEASUREMENTS

ROLAND W. ANDERSON  
COUNTY SURVEYOR  
ANOKA COUNTY, MINNESOTA

N.E. COR. SEC. 31 - T34 - R24  
SET CAST IRON MONUMENT FLUSH IN  $\text{E}\text{E}$   
BLACKTOP ROADS FROM AREA RESURVEY.  
PK'S 2.00' NORTH & EAST.

RAISED  
10-5-76  
H. LARSON

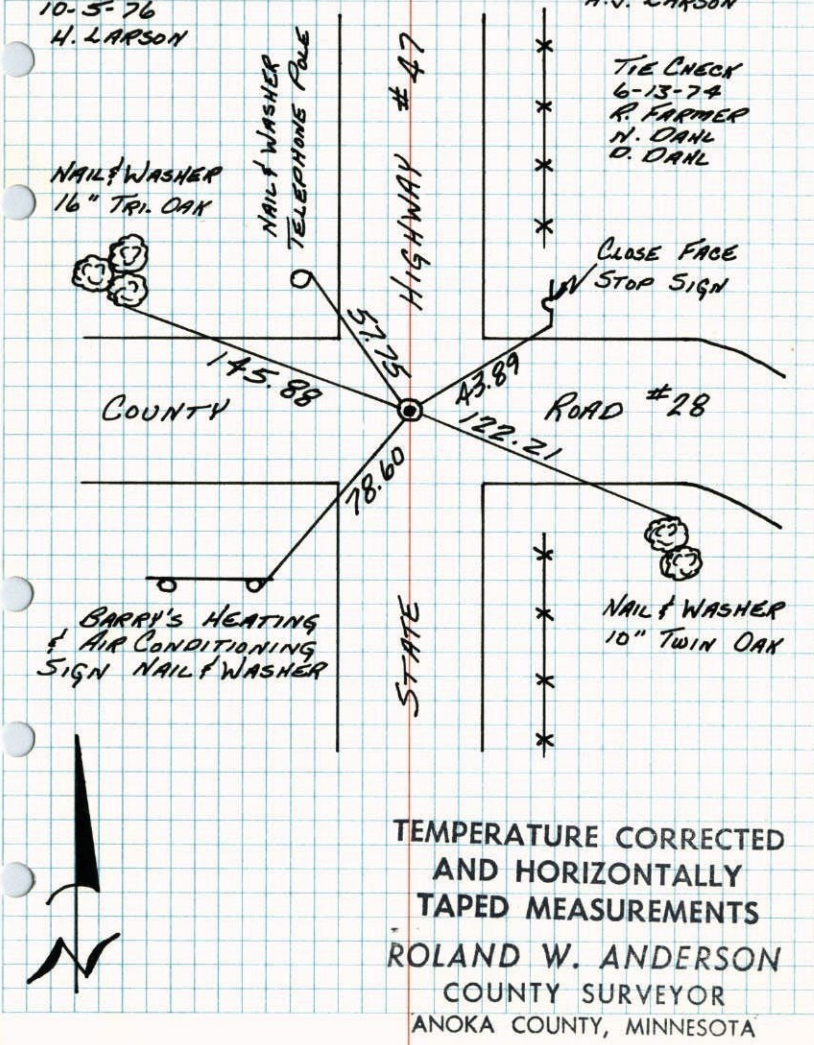
MAY 19, 1966  
M.D. ANDERSON  
H.J. LARSON



N.E. COR. SEC. 31 - T34 - R24  
SET CAST IRON MONUMENT FLUSH IN  $\text{E}\text{E}$   
BLACKTOP ROADS FROM AREA RESURVEY.  
PK'S 2.00' NORTH & EAST.

RAISED  
10-5-76  
H. LARSON

MAY 19, 1966  
M.D. ANDERSON  
H.J. LARSON



## NE Cor. Sec. 31-T34-R24

Set Cast Iron Monument flush in  $\frac{1}{2}$ - $\frac{1}{2}$  Blacktop  
roads from area resurvey. PK's 2.00'

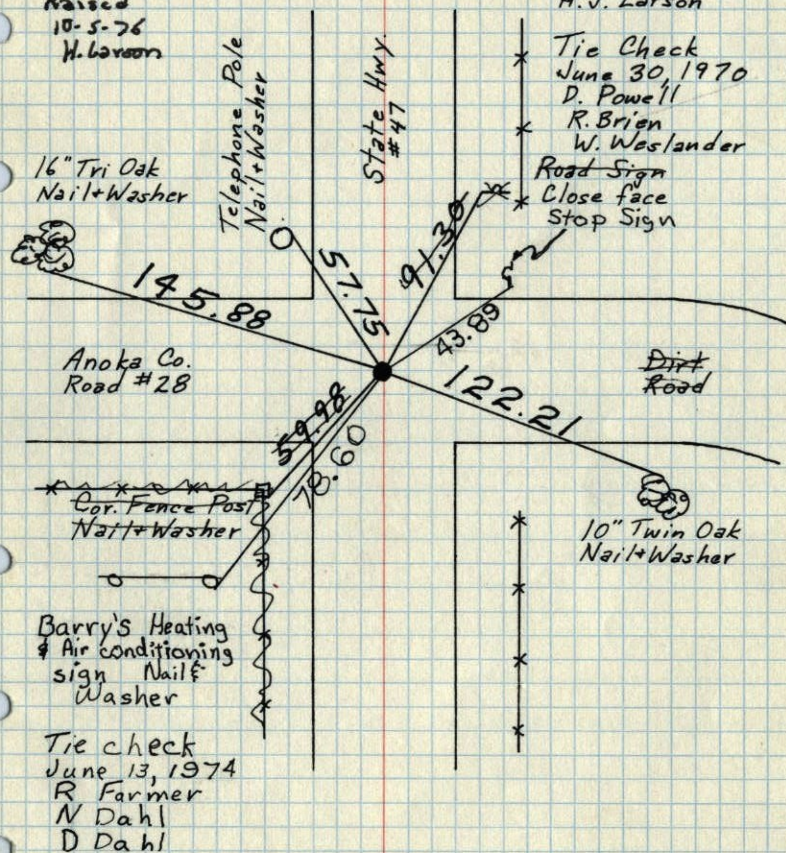
North + East.

Raised  
10-5-76  
H. Larson

May 19, 1966  
M. D. Anderson  
H. J. Larson

Tie Check  
June 30, 1970  
D. Powell  
R. Brien  
W. Weslander

Road Sign  
Close face  
Stop Sign



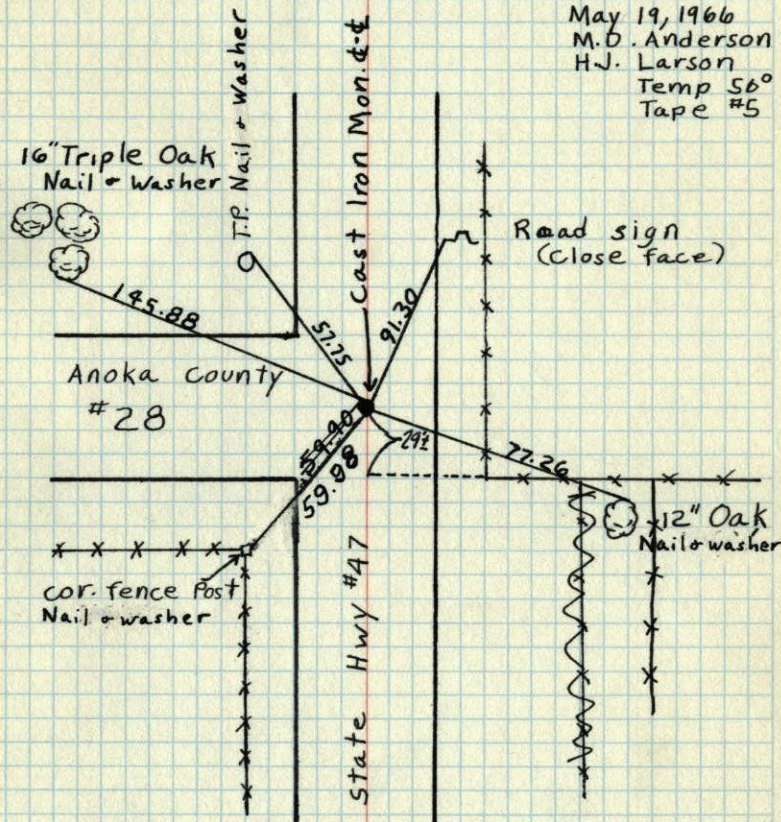
TEMPERATURE CORRECTED  
AND HORIZONTALLY  
TAPED MEASUREMENTS

ROLAND W. ANDERSON  
COUNTY SURVEYOR  
ANOKA COUNTY, MINNESOTA

## N.E. Cor. Sec. 31, T34, R24

Set Cast Iron Mon. flush in  $\frac{1}{2}$ - $\frac{1}{2}$  Blacktop  
roads Set from area resurvey

May 19, 1966  
M. D. Anderson  
H. J. Larson  
Temp 56°  
Tape #5



TEMPERATURE CORRECTED  
AND HORIZONTALLY  
TAPED MEASUREMENTS

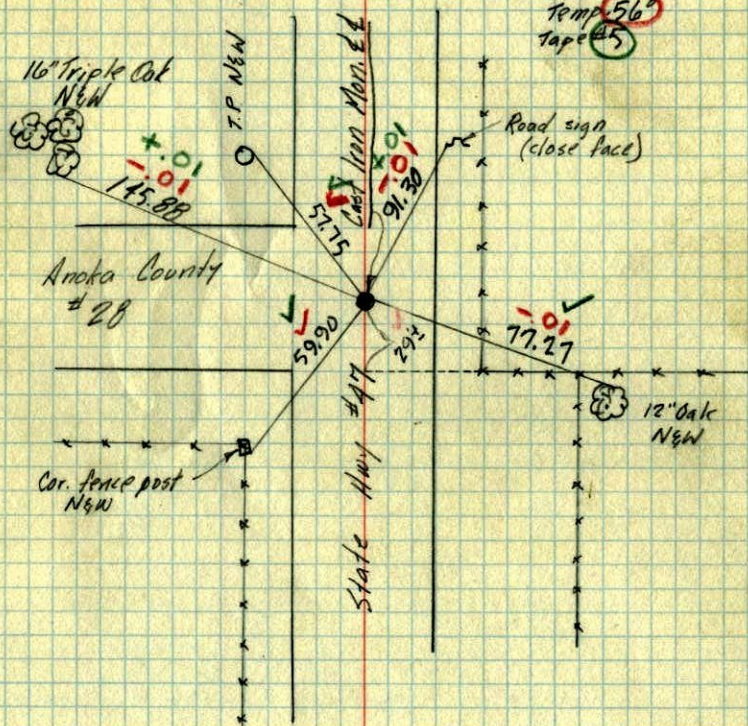
ROLAND W. ANDERSON  
COUNTY SURVEYOR  
ANOKA COUNTY, MINNESOTA

N.E. Cor. Sec. 31, T34, R24

Set Cast Iron Mon. flush in ~~the~~ Blacktop roads  
Set from area resurvey

May 19, 1966  
M. D. Anderson  
H. J. Larson

Temp 56°  
Tape #5



TEMPERATURE CORRECTED ROLAND W. ANDERSON  
AND HORIZONTALLY COUNTY SURVEYOR  
TAPED MEASUREMENTS ANOKA COUNTY, MINNESOTA