

CERTIFICATE OF LOCATION OF GOVERNMENT CORNER

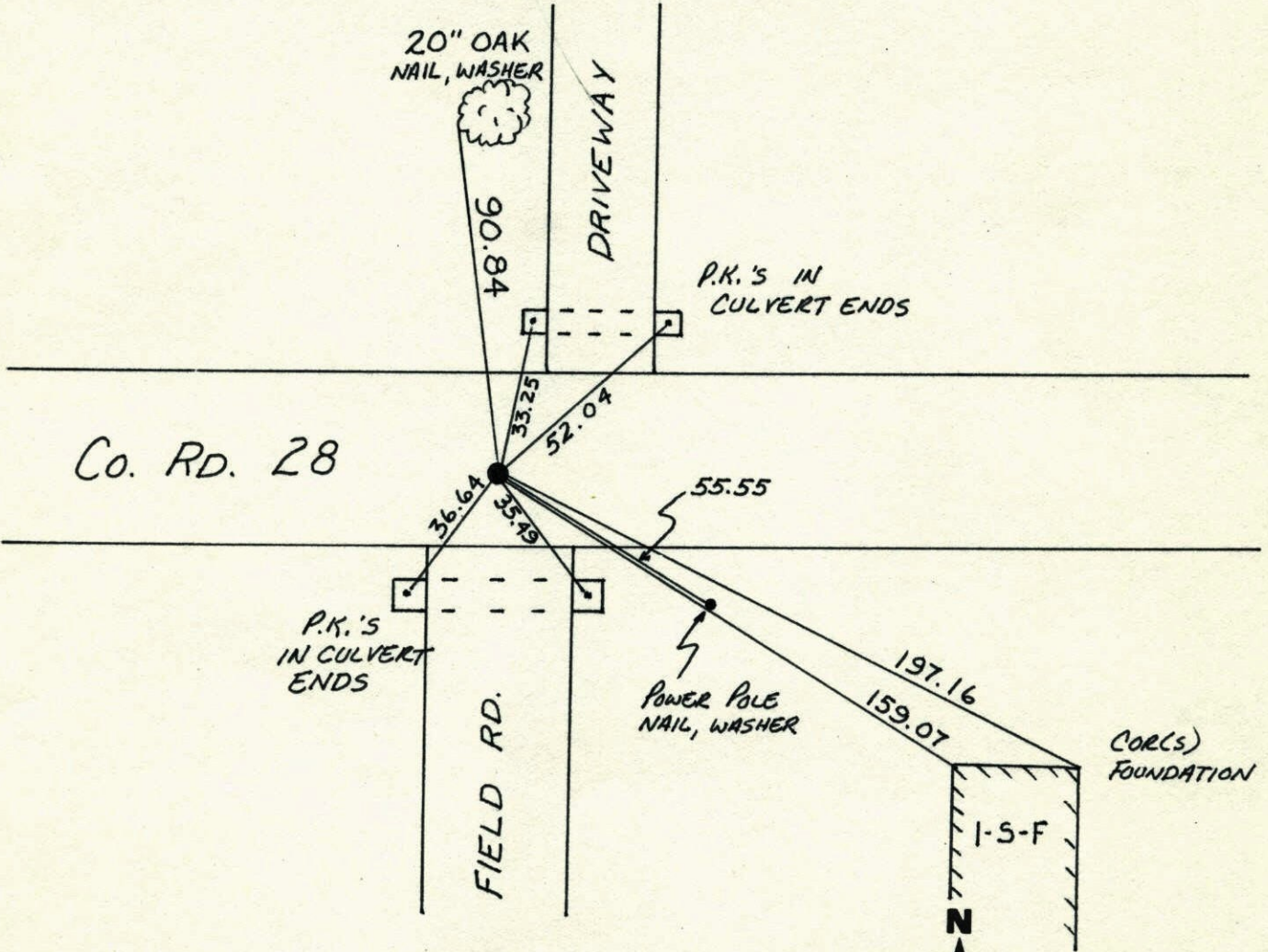
County of Anoka State of Minnesota

NORTH QTR Corner of Sec. 31 Township 34 Range 24

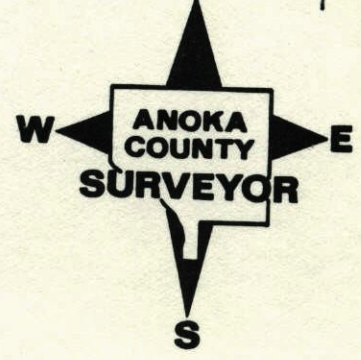
I hereby certify that on the 1 day of JUNE, 1961, I found the described corner which was evidenced by 6" X 6" GRANITE

and I further certify that to perpetuate the location of said corner, I did, at the exact location thereof, place a permanent marker consisting of CAST IRON MONUMENT

which reference or witness monuments are located in the manner following:



Revised date	Revised date	Revised date
7-20-84		
7-20-92		
7-15-97		

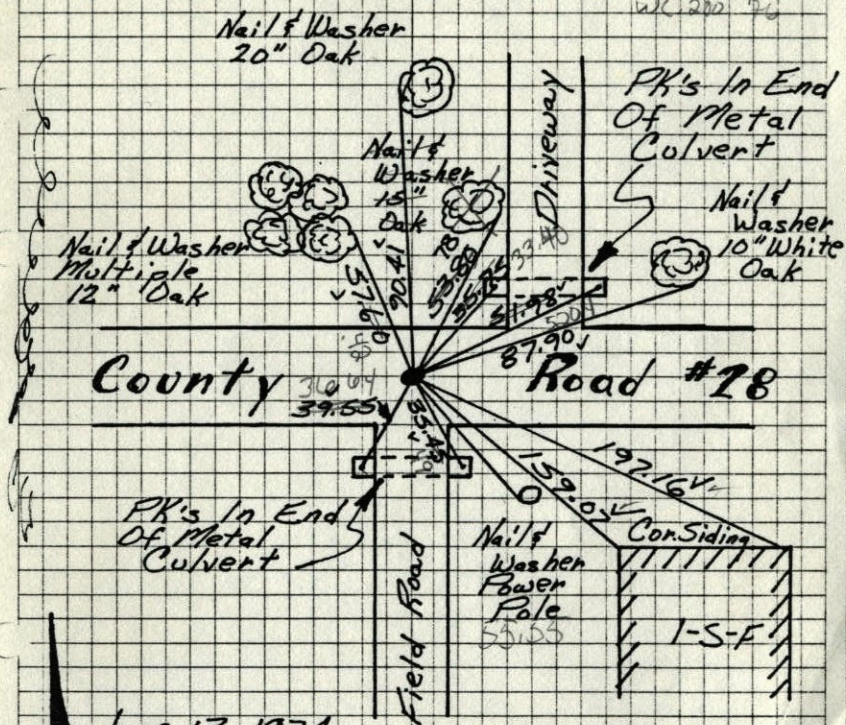


7-20-84

33

N 1/4 Cor Sec 31-T34-R24

Tie Check
7-20-84
O. Ross
G. Up
D. Dahl
W.C. 200 76



June 13, 1974

R. Farmer
N. Dahl
D. Dahl

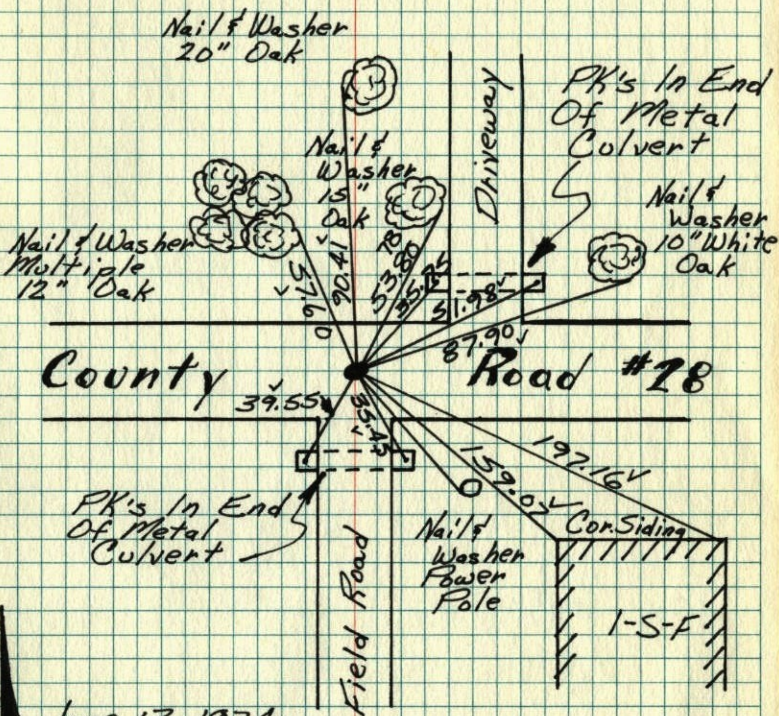
TIE CHECK	Tie Check
MAY 5, 1977	S. 26-81
D. DAHL	P. Ross
S. BRIEN	P. Hamby

ROLAND W. ANDERSON TEMPERATURE CORRECTED
COUNTY SURVEYOR
ANOKA COUNTY, MINNESOTA

AND HORIZONTALLY
TAPED MEASUREMENTS

33

N 1/4 Cor Sec 31-T34-R24



June 13, 1974

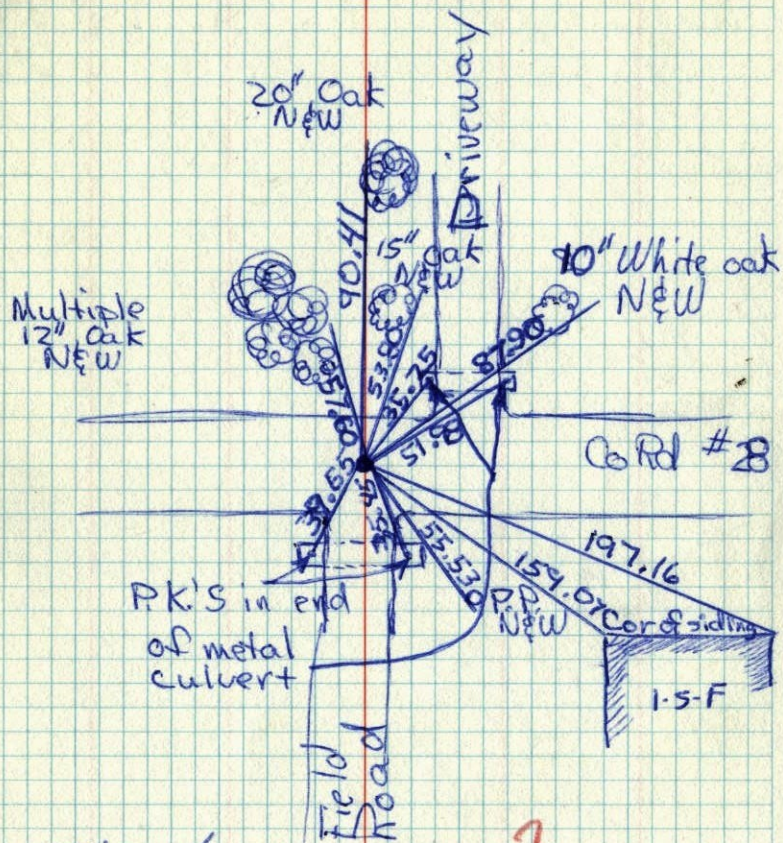
R. Farmer
N. Dahl
D. Dahl

TIE CHECK	Tie Check
MAY 5, 1977	S. 26-81
D. DAHL	P. Ross
S. BRIEN	P. Hamby

ROLAND W. ANDERSON TEMPERATURE CORRECTED
COUNTY SURVEYOR
ANOKA COUNTY, MINNESOTA

AND HORIZONTALLY
TAPED MEASUREMENTS

N $\frac{1}{4}$ Cor Sec 31-T34-R24



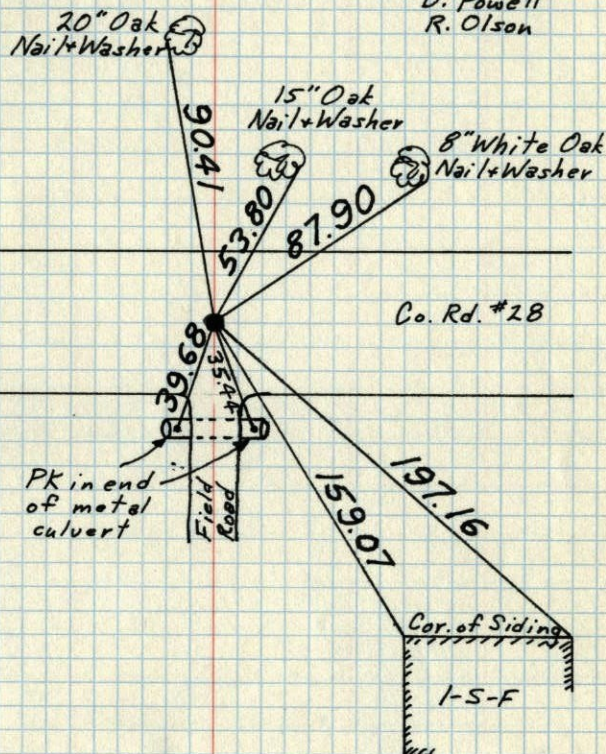
Tie ✓
 June 13, 1974
 R Farmer
 N Dahl
 A Dahl

TEMP?

N $\frac{1}{4}$ Cor. Sec. 31-T34-R24

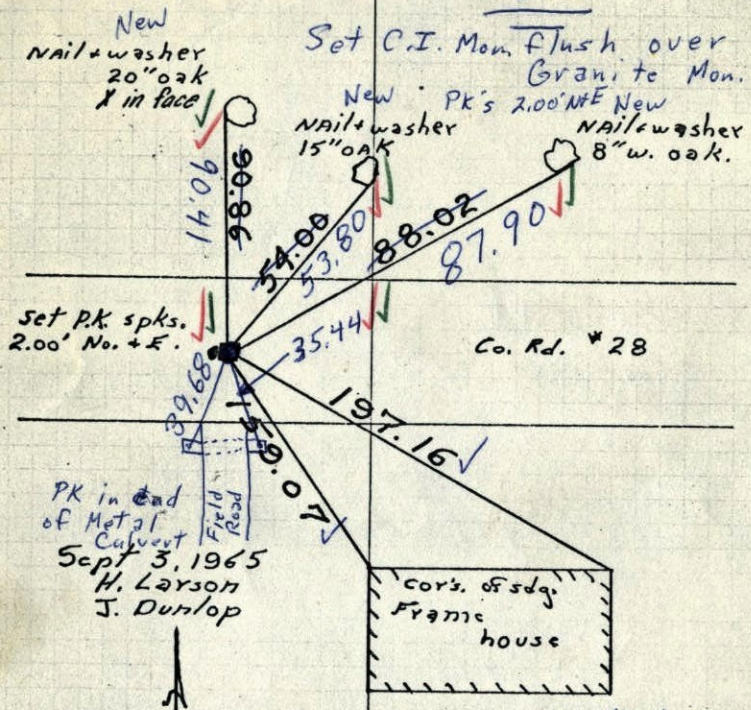
6"x6" Granite with $\frac{3}{4}$ " Iron Pipe on West side and down 2.4'±. Set Cast Iron Monument flush over Granite. PK's 2.00' North + East.

Sept. 2, 1969
 D. Powell
 R. Olson



TEMPERATURE CORRECTED ROLAND W. ANDERSON
 AND HORIZONTALLY COUNTY SURVEYOR
 TAPED MEASUREMENTS ANOKA COUNTY, MINNESOTA

N. 1/4 Cor. Sec. 31 T34 R 24
6"x6" granite with 3/4" iron pipe on
west side and down ~~2.4'~~ 2.4'



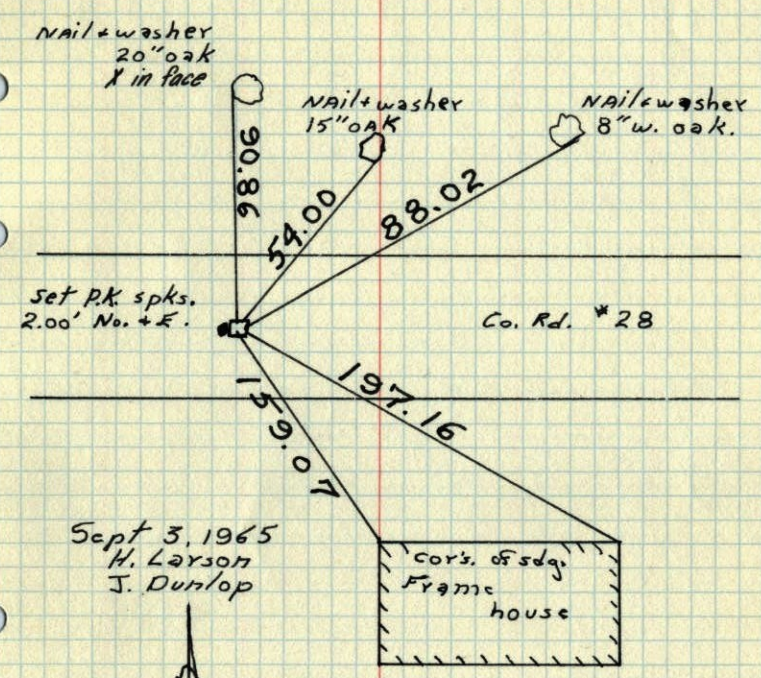
New Nail + washer 20" oak X in face
Set C.I. Mon. flush over Granite Mon.
New PK's 2.00' NE New Nail + washer 15" oak
New Nail + washer 8" w. oak.

9/2/69
#9-700
D. Powell
R. Olson

TEMPERATURE CORRECTED
AND HORIZONTALLY
TAPED MEASUREMENTS

ROLAND W. ANDERSON
COUNTY SURVEYOR
ANOKA COUNTY, MINNESOTA

N. 1/4 Cor. Sec. 31 T34 R 24
6"x6" granite with 3/4" iron pipe on
west side and down 1'



Nail + washer 20" oak X in face
Nail + washer 15" oak
Nail + washer 8" w. oak.

TEMPERATURE CORRECTED
AND HORIZONTALLY
TAPED MEASUREMENTS

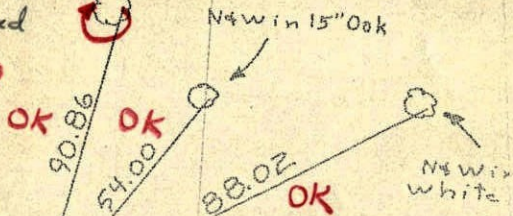
ROLAND W. ANDERSON
COUNTY SURVEYOR
ANOKA COUNTY, MINNESOTA

N 1/4 Cor. Sec. 31, T34, R24
 6"X6" Granite with 3/4" I.P. on W. Side
 and down 1'

Nail & Washer in 20" Oak
 with "X" in Face

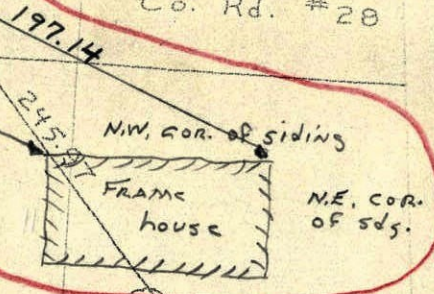
Checked
 New Ties Added
 Sept. 3 1965
 Tape 5 73°

H. LARSON
 J. Dunlop



P.K. in, set P.K.'s
 2' N. AND E.

Co. Rd. #28



CORRECT

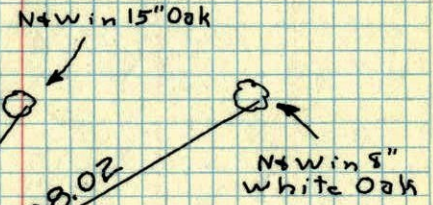
23, Apr. 62
 J. Oliver
 M.D. Anderson

TEMPERATURE CORRECTED
 AND HORIZONTALLY
 TAPED MEASUREMENTS

ROLAND W. ANDERSON
 COUNTY SURVEYOR
 ANOKA COUNTY, MINNESOTA

N 1/4 Cor. Sec. 31, T34, R24
 6"X6" Granite with 3/4" I.P. on W. Side
 and down 1'

Nail & Washer in 20" Oak
 with "X" in Face



Co. Rd. #28



23, Apr. 62
 J. Oliver
 M.D. Anderson

TEMPERATURE CORRECTED
 AND HORIZONTALLY
 TAPED MEASUREMENTS

ROLAND W. ANDERSON
 COUNTY SURVEYOR
 ANOKA COUNTY, MINNESOTA

N¹/₄ Cor. Sec. 31, T 34, R 24

6"x6" Granite with 3/4" I.P. on W. Side &
down 1' retied because of road Const.

New in 20" Oak with "X" in face

New in 8" white Oak

New in 15" Oak

90.86

70.87

88.02

89.03

54.00
ON TIE

Co Rd # 28

245.97
246.00

N

23, Apr. 62

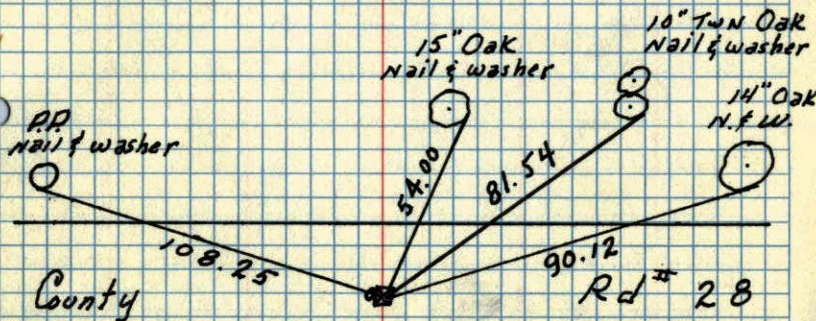
52°

J. Oliver
M.D. Anderson

New in 30" Elm

N¹/₄ Cor. Sec. 31-34-24 St. Francis

Found 6"x6" Granite Mon. down 10'
1/2" iron on W. Face of Mon.



1 JUNE 1961

R.O. Freeman

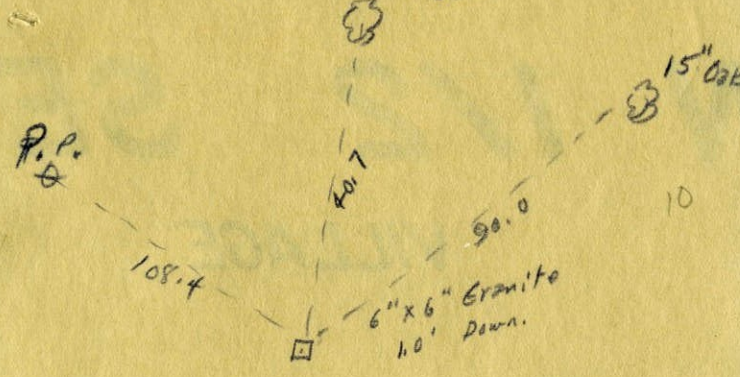
M.D. Anderson

New Ties in
New Tie Book

ROLAND W. ANDERSON
COUNTY SURVEYOR
ANOKA COUNTY, MINNESOTA

TEMPERATURE CORRECTED
AND HORIZONTALLY
TAPED MEASUREMENTS

N/4 Corn. (11)
Sec. 31, T 34, R 24
May 1958



Iron placed along side
Granite
Copper Nail & Discs in all
ties