

# CERTIFICATE OF LOCATION OF GOVERNMENT CORNER

County of Anoka                      State of Minnesota

## East 1/4 Corner of Sec. 31 Township 34 Range 24

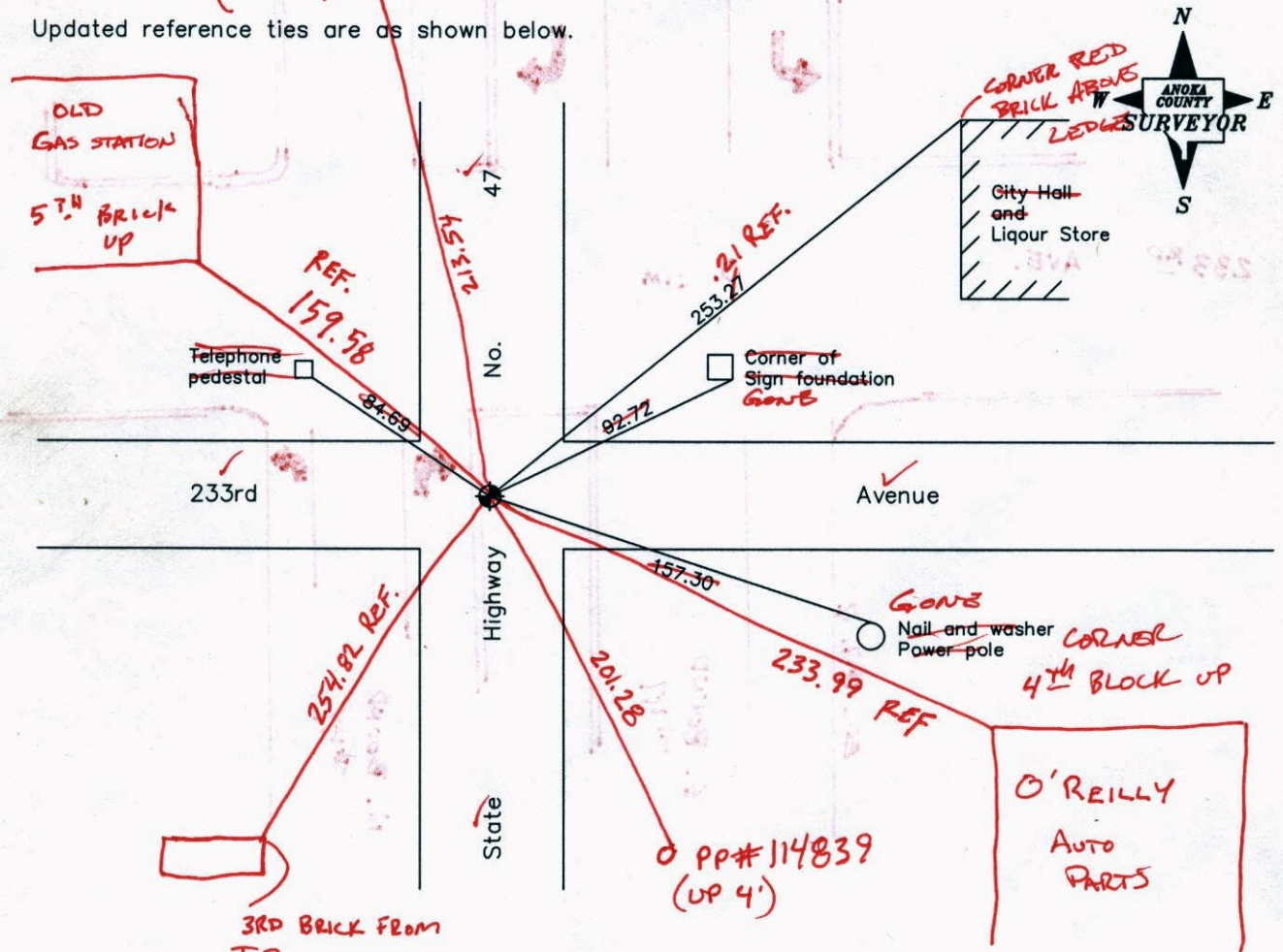
On the \_\_\_ day of \_\_\_ May \_\_\_, 1958, the described corner was evidenced by a 6" X 6" granite monument found by the State Highway Department

and to perpetuate the location of said corner, at the exact location thereof, a permanent marker was placed consisting of a cast iron monument on top of the granite monument DOWN 0.2

**SEE BACK FOR ROAD ALIGNMENT**

AND on the \_\_\_ day of \_\_\_, \_\_\_, said permanent marker was \_\_\_\_\_

Updated reference ties are as shown below.  
*PP#116919 (UP 2')*



Revised date	6/16/87
	7/20/92
	7/16/97

N.A.D. 1983 Coordinates (1996 Adjustment)	
County Project Coordinates	
Northing	<u>230055.5280</u>
Easting	<u>474021.1910</u>
Date	<u>8/27/01</u>

I hereby certify that this United States public land survey monument record is correct and complete to the best of my knowledge and belief.

\_\_\_\_\_, Anoka County Surveyor  
 Minnesota License Number \_\_\_\_\_

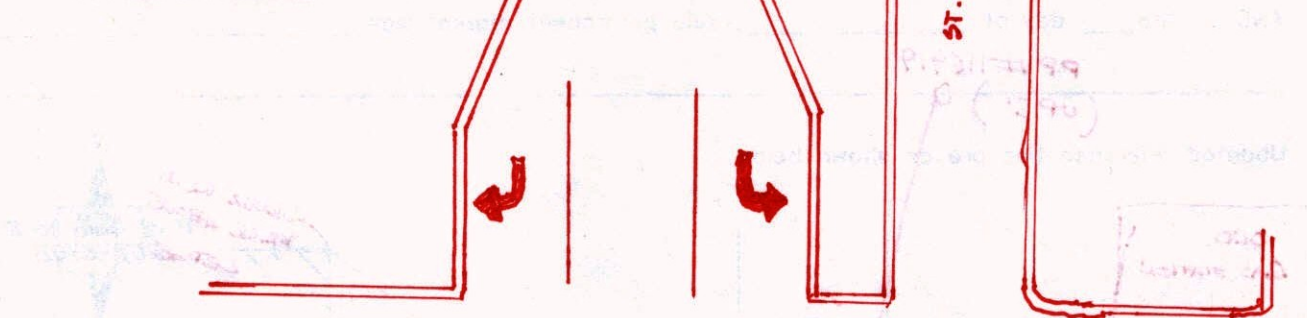
*3D QUAL: 0.04      N: 230055.4336  
 E: 474021.1278*

Case No. 100-100000-0000

On the 10th day of 1990, the following facts were ascertained by the undersigned:

and to determine the location of the subject property, the undersigned caused a survey to be made and the same is attached hereto for your information.

The survey shows that the subject property is situated in the City of [redacted] and is bounded as follows:



233 RD AVE.      CIM      ST. FRANCIS BLVD. NW.

ED. PIT. V      S. BOUND #47      N. BOUND #47

314 West 45th St.      314 West 45th St.

314 West 45th St.      314 West 45th St.

314 West 45th St.      314 West 45th St.

314 West 45th St.      314 West 45th St.

314 West 45th St.      314 West 45th St.

314 West 45th St.      314 West 45th St.

314 West 45th St.      314 West 45th St.

314 West 45th St.      314 West 45th St.

314 West 45th St.      314 West 45th St.

# CERTIFICATE OF LOCATION OF GOVERNMENT CORNER

County of Anoka

State of Minnesota

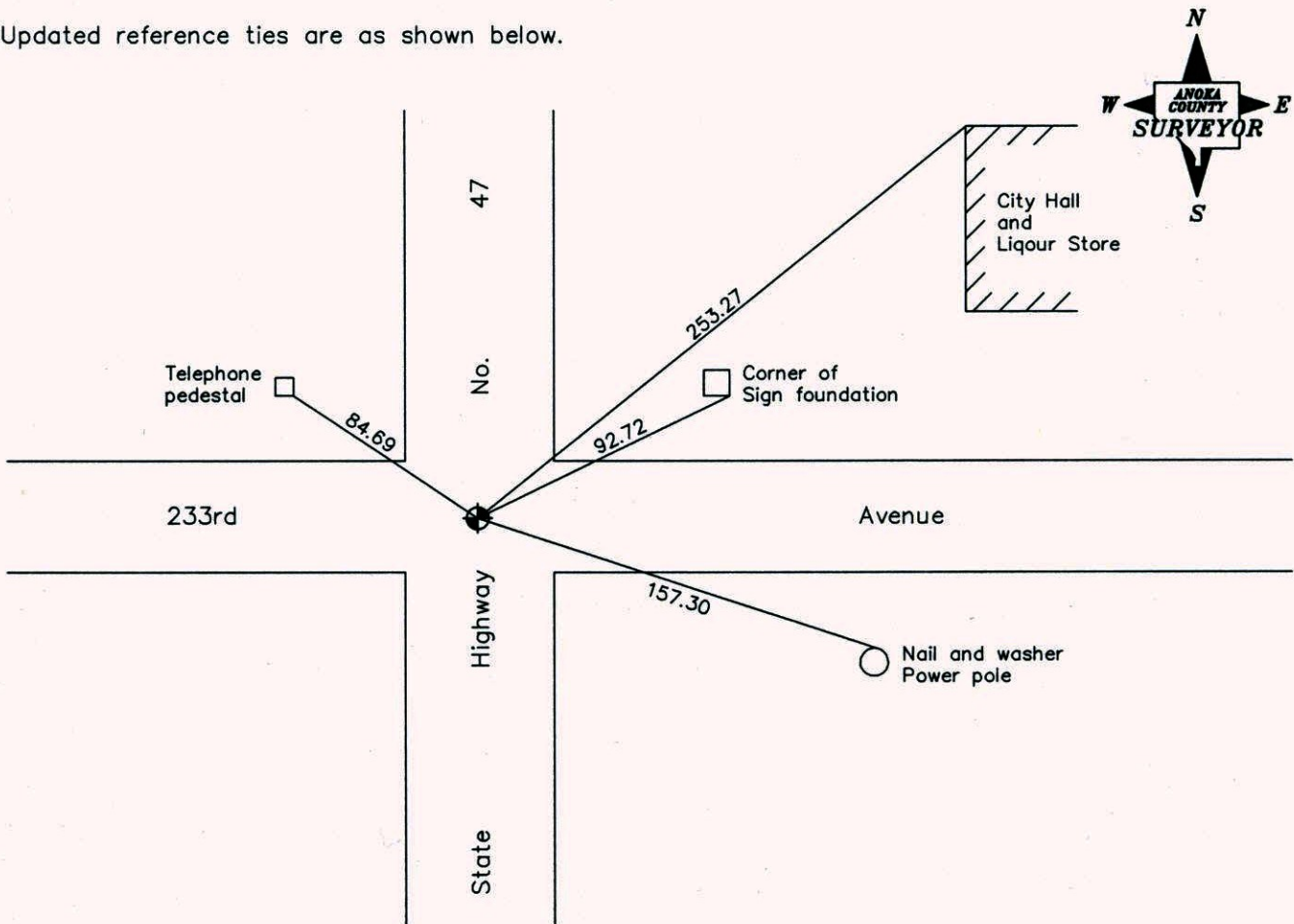
East 1/4 Corner of Sec. 31 Township 34 Range 24

On the \_\_\_ day of May, 1958, the described corner was evidenced by a 6" X 6" granite monument found by the State Highway Department

and to perpetuate the location of said corner, at the exact location thereof, a permanent marker was placed consisting of a cast iron monument on top of the granite monument

AND on the \_\_\_ day of \_\_\_\_\_, \_\_\_\_\_, said permanent marker was \_\_\_\_\_

Updated reference ties are as shown below.



Revised date
6/16/87
7/20/92
7/16/97

N.A.D. 1983 Coordinates (1996 Adjustment)	
County Project Coordinates	
Northing	<u>230055.5280</u>
Easting	<u>474021.1910</u>
Date	<u>8/27/01</u>

I hereby certify that this United States public land survey monument record is correct and complete to the best of my knowledge and belief.

\_\_\_\_\_, Anoka County Surveyor

Minnesota License Number \_\_\_\_\_

# CERTIFICATE OF LOCATION OF GOVERNMENT CORNER

County of Anoka

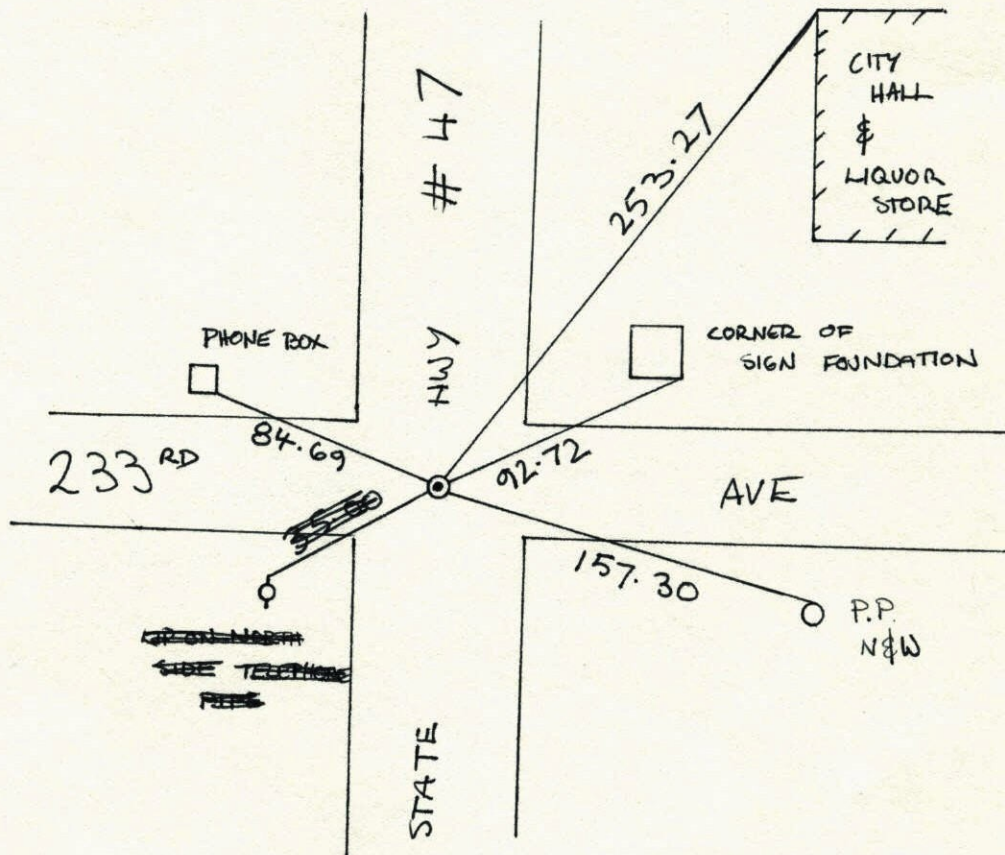
State of Minnesota

EAST QUARTER Corner of Sec. 31 Township 34 Range 24

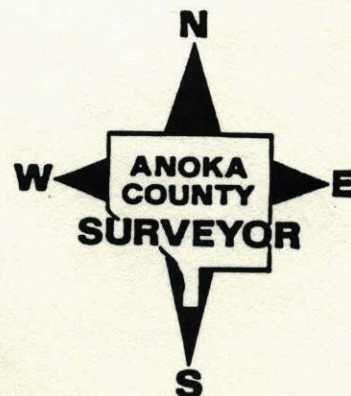
I hereby certify that on the 1 day of MAY, 1958, I found the described corner which was evidenced by 6" X 6" GRANITE FOUND BY STATE HWY. DEPT.

and I further certify that to perpetuate the location of said corner, I did, at the exact location thereof, place a permanent marker consisting of CAST IRON ON TOP OF GRANITE

which reference or witness monuments are located in the manner following:



Revised date	Revised date	Revised date
9-1-65		
10-6-76		
5-5-77		
7-20-84		
6-16-87		
7-20-92		
7-16-97		



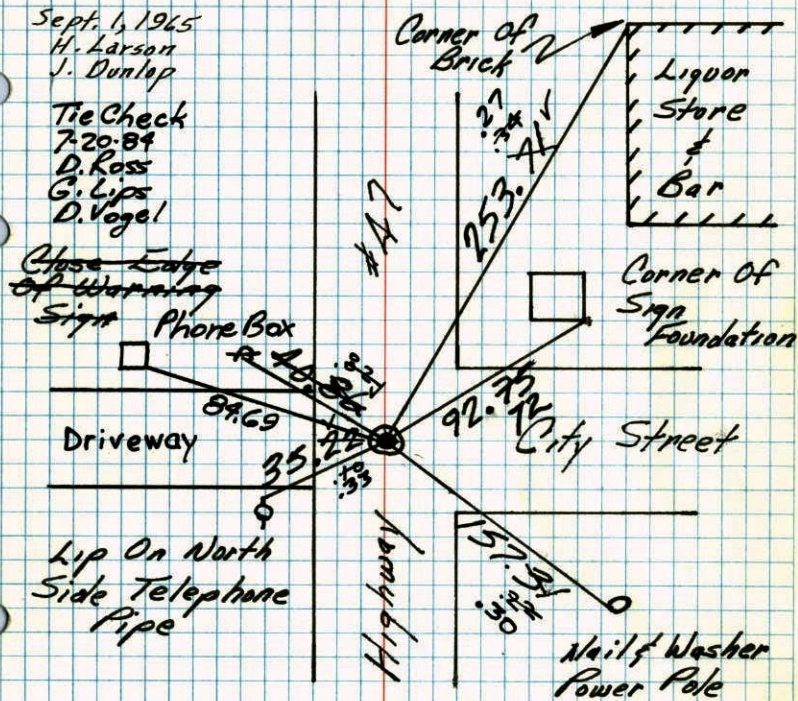
## E 1/4 Corner Sec. 31 T34 R24

Granite Monument Down 1.5'± With  
Cast Iron On Top. Cast Iron Flush  
With P.K.'s North & East

Sept. 1, 1965  
H. Larson  
J. Dunlap

Tie Check  
7-20-84  
D. Ross  
G. Lips  
D. Vogel

Close Edge  
of Warning  
Sign



Lip On North  
Side Telephone  
Pipe

Highway  
#47

City Street

Nail & Washer  
Power Pole

TIE CHECK  
MAY 5, 1977  
D. DAHL  
S. BRIEN

10-6-76  
H. Larson  
R. Gutzko  
J. Boettcher

TIE CHECK  
8-28-80  
R. STEPHENS  
P. ROSS  
P. HORNBY

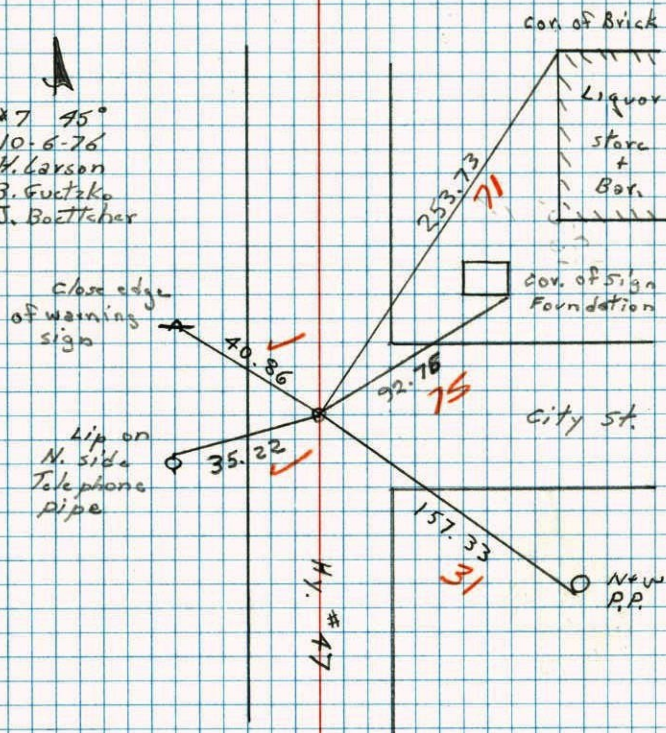
TEMPERATURE CORRECTED  
AND HORIZONTALLY  
TAPED MEASUREMENTS

ROLAND W. ANDERSON  
COUNTY SURVEYOR  
ANOKA COUNTY, MINNESOTA

## E 1/4 Cor. Sec. 31 T34 R24

Granite monument down 1.5'± with  
cast iron on top C.I. Flush with P.K's  
North & East.

\*7 45°  
10-6-76  
H. Larson  
B. Gutzko  
J. Boettcher



con. of Brick

Liquor  
store  
&  
Bar

Cor. of Sign  
Foundation

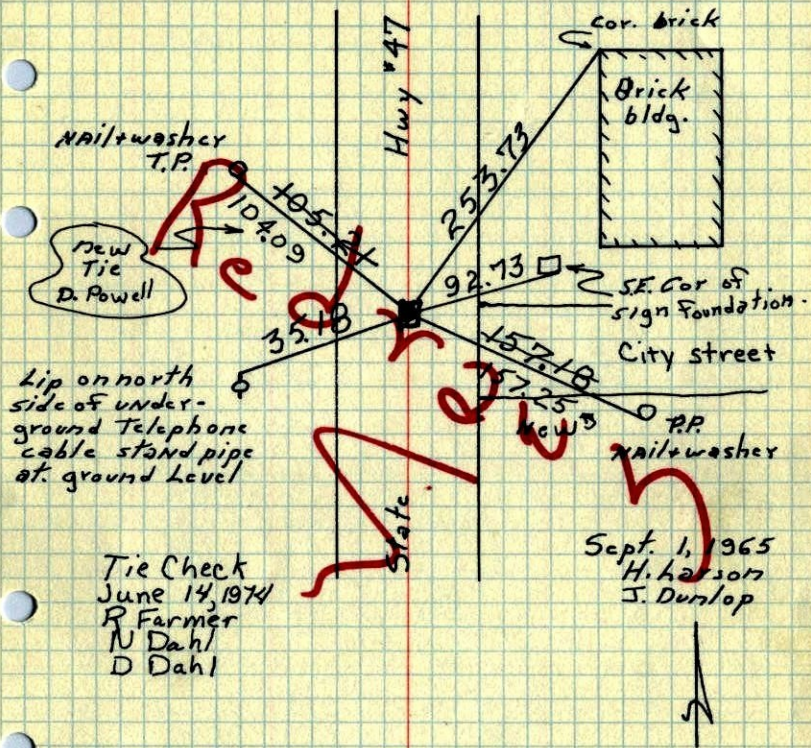
City St.

New  
P.P.

Highway  
#47

E 1/4 Cor. Sec. 31 T34 R24

Granite monument down 1 foot.  
Iron pipe over Top center flush  
with black top.



Lip on north side of underground telephone cable stand pipe at ground level

Tie Check  
June 14, 1974  
R Farmer  
N Dahl  
D Dahl

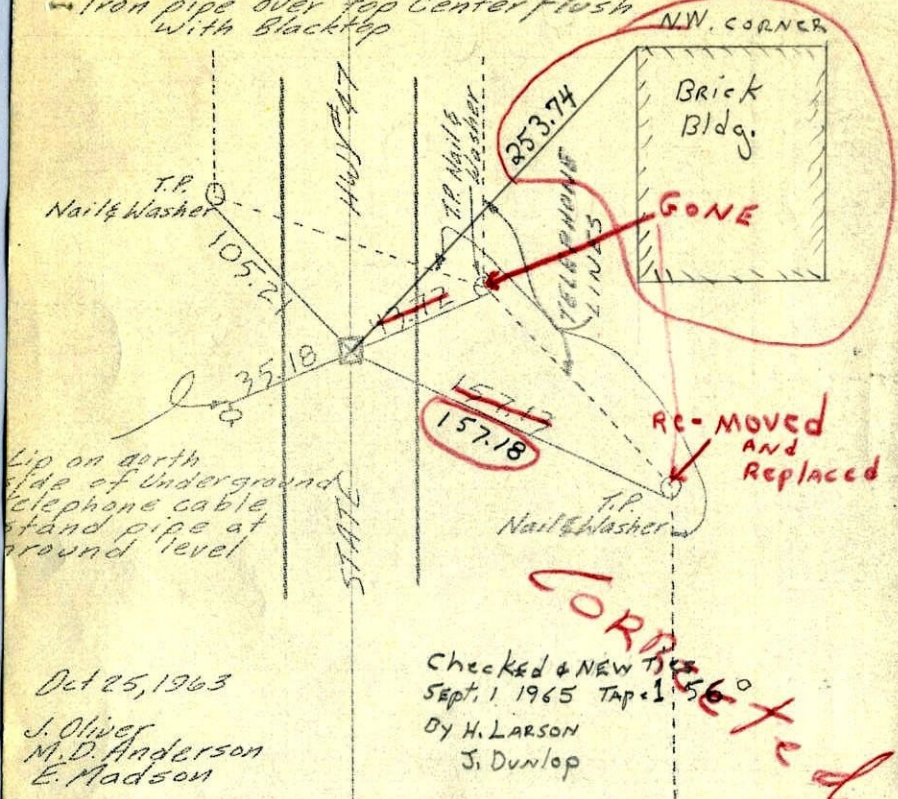
Sept. 1, 1965  
H. Larson  
J. Dunlop

TEMPERATURE CORRECTED  
AND HORIZONTALLY  
TAPED MEASUREMENTS

ROLAND W. ANDERSON  
COUNTY SURVEYOR  
ANOKA COUNTY, MINNESOTA

E 1/4 Cor. Sec. 31-34-24

Granite Monument down 1 foot  
Iron pipe over top center flush  
with black top



Lip on north side of underground telephone cable stand pipe at ground level

Oct 25, 1963  
J. Oliver  
M.D. Anderson  
E. Madson

Checked & NEW TIE  
Sept. 1, 1965 Tap 1.56°  
By H. Larson  
J. Dunlop

**Corrected**

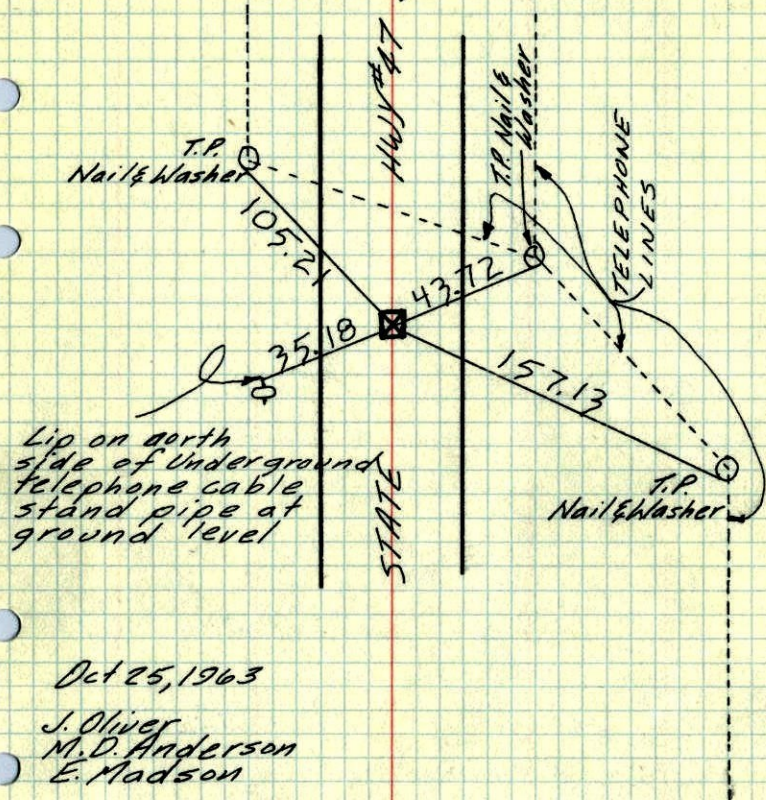
TEMPERATURE CORRECTED  
AND HORIZONTALLY  
TAPED MEASUREMENTS

ROLAND W. ANDERSON  
COUNTY SURVEYOR  
ANOKA COUNTY, MINNESOTA

2  
E 1/4 Cor. Sec. 31-34-24

Granite Monument down 1 foot

Iron pipe over top Center flush with Blacktop



Oct 25, 1963

J. Oliver  
M.D. Anderson  
E. Madson

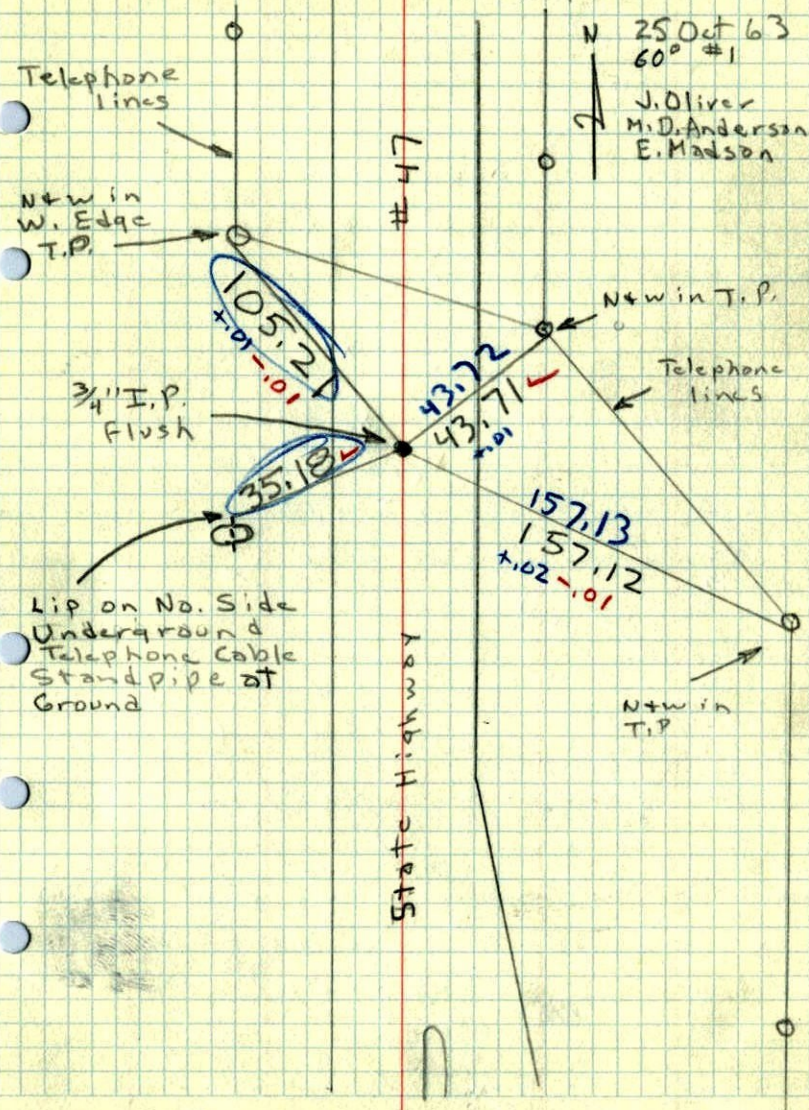
TEMPERATURE CORRECTED  
AND HORIZONTALLY  
TAPED MEASUREMENTS

ROLAND W. ANDERSON  
COUNTY SURVEYOR  
ANOKA COUNTY, MINNESOTA

E 1/4 Cor. Sec. 31, T34, R 24

Granite Monument down 1' J.P. over

Center flush with Blk top.



E<sup>1</sup>/<sub>4</sub> Corn. Sec. 31, T. 34, R. 24  
(St. Francis)  
Granite

Aug. 19, 1960

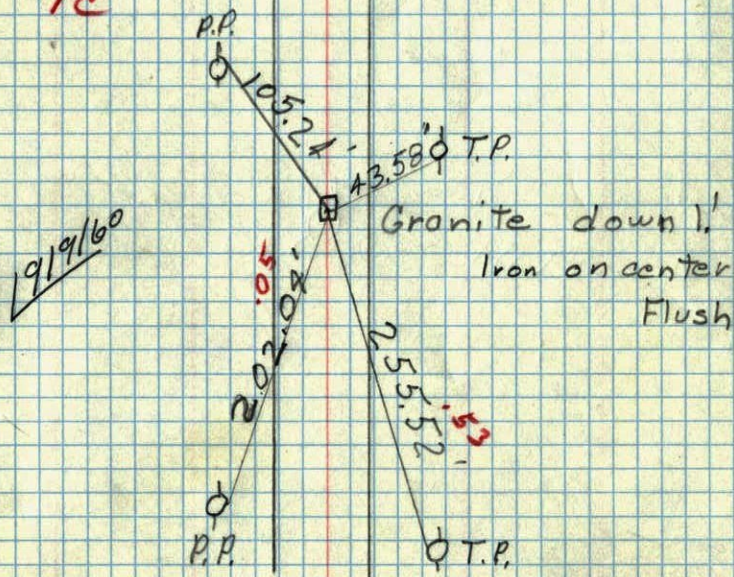
Temp. 75°

(Rain)

R. Giddings

R. Carlson

TC



E<sup>1</sup>/<sub>4</sub> Sec. 31, T. 34, R. 24

2

Flow Ridge to West

6" x 6" Granite - Down 1.0'  
Broken Pump Handle  
on top

Lines up with Fence  
along way to East

T. H. # 56

State Hwy. Dept  
May 1958



E 1/4 Corn.

Sec. 31, T 34, R 24

May 1958

12

Plow Ridge to west



6" x 6" Granite - Down 1.0'  
None on top  
Broken rump handle

Lines up with  
Fence a long way to East

L. T. H. #56