

CERTIFICATE OF LOCATION OF GOVERNMENT CORNER

County of Anoka

State of Minnesota

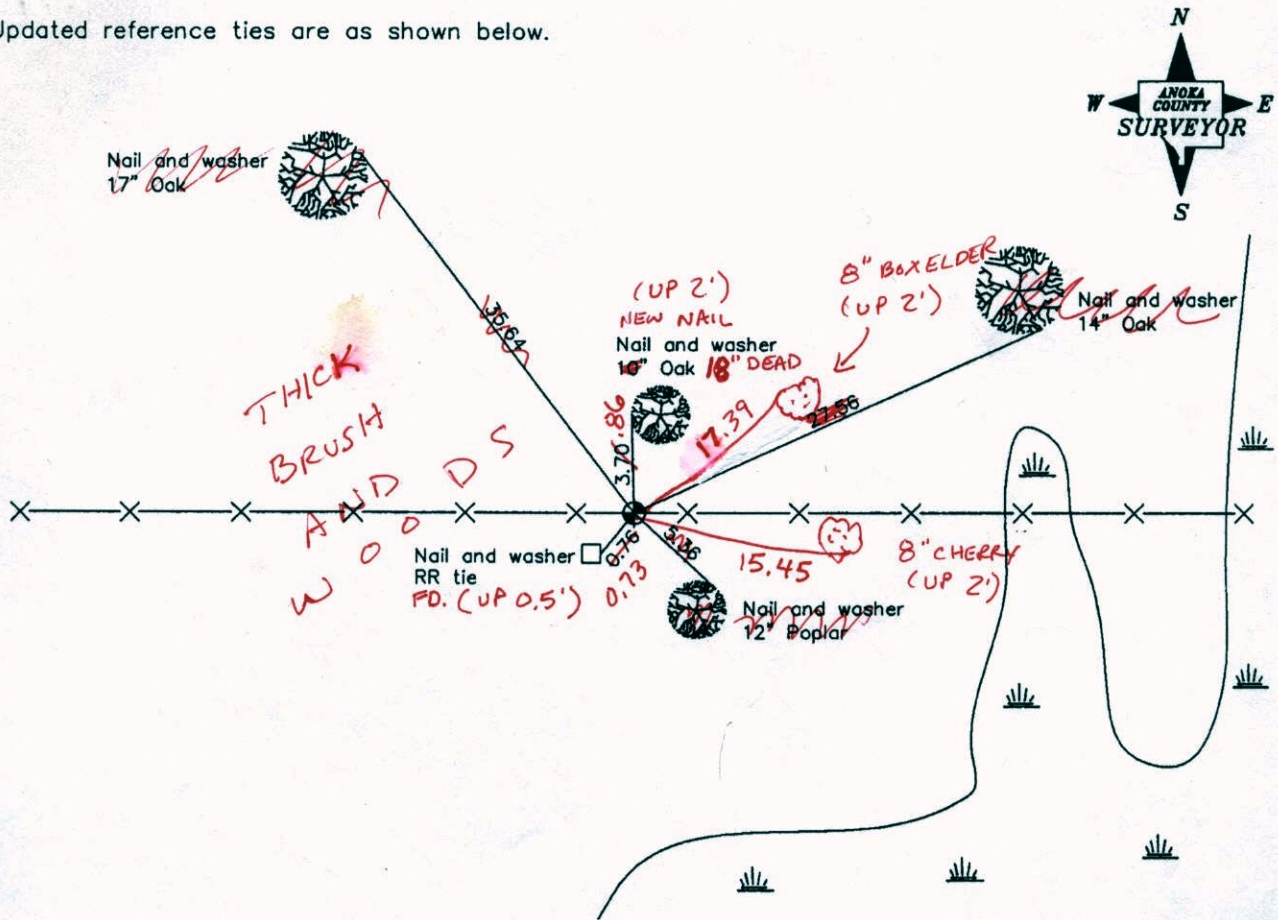
East 1/4 Corner of Sec. 33 Township 34 Range 24

On the 30th day of July, 1964, the described corner was evidenced by area resurvey

and to perpetuate the location of said corner, at the exact location thereof, a permanent marker was placed consisting of a cast iron monument

AND on the 17th day of April, 2003, said permanent marker was found and the ties were updated

Updated reference ties are as shown below.



4-15-14
BK-55
TAPED

Revised date
6/15/87
7/28/92
4/17/03

N.A.D. 1983 Coordinates (1996 Adjustment)	
County Project Coordinates	
Northing	<u>230068.6848</u>
Easting	<u>484532.5920</u>
Date	<u>4/22/03</u>

I hereby certify that this United States public land survey monument record is correct and complete to the best of my knowledge and belief.

Larry D. Hoium Date 4/17/03

Larry D. Hoium, Anoka County Surveyor
Minnesota License Number 18165

CERTIFICATE OF LOCATION OF GOVERNMENT CORNER

County of Anoka

State of Minnesota

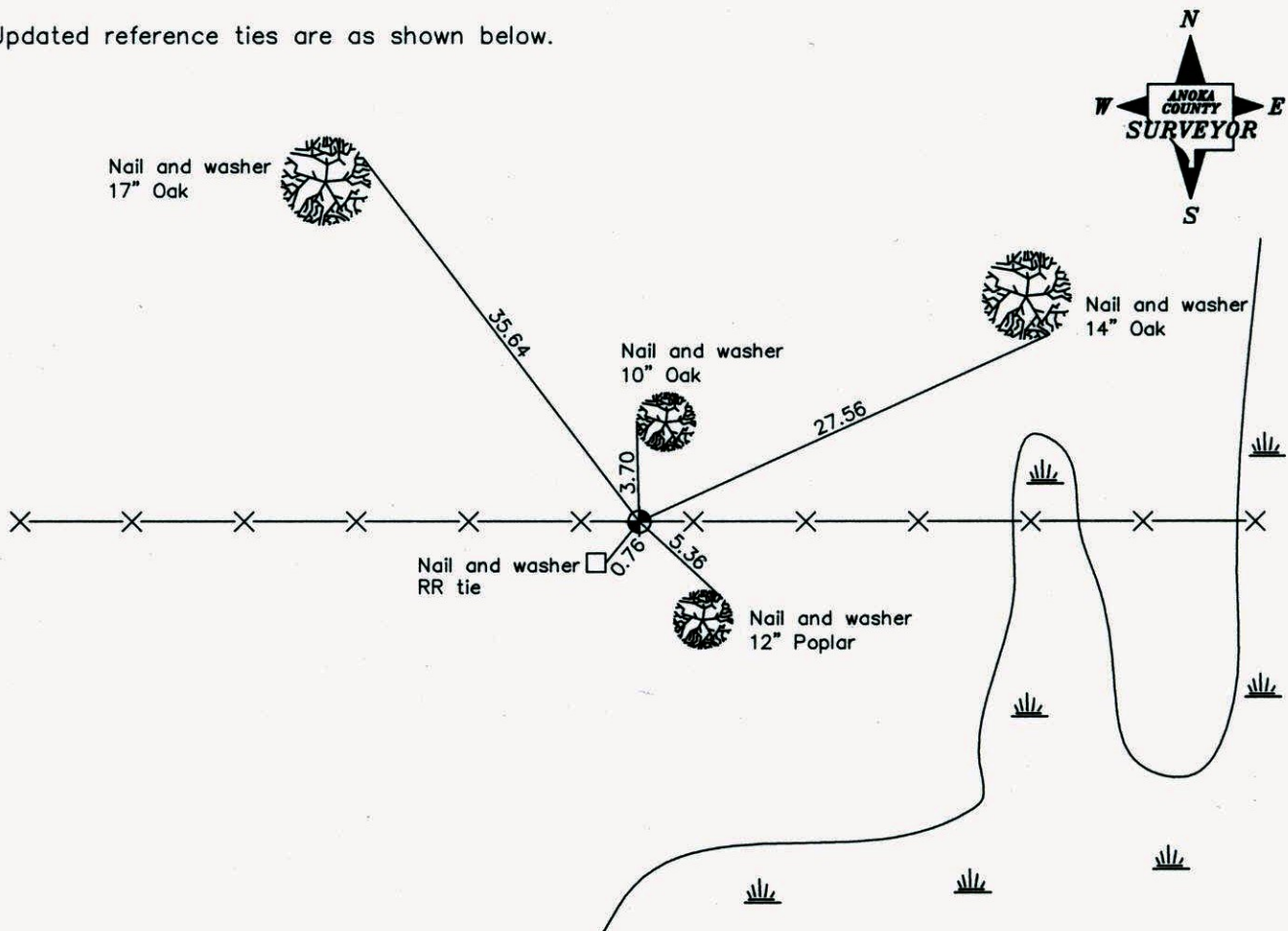
East 1/4 Corner of Sec. 33 Township 34 Range 24

On the 30th day of July, 1964, the described corner was evidenced by area resurvey

and to perpetuate the location of said corner, at the exact location thereof, a permanent marker was placed consisting of a cast iron monument

AND on the 17th day of April, 2003, said permanent marker was found and the ties were updated

Updated reference ties are as shown below.



Revised date
6/15/87
7/28/92
4/17/03

N.A.D. 1983 Coordinates (1996 Adjustment)	
County Project Coordinates	
Northing	<u>230068.6848</u>
Easting	<u>484532.5920</u>
Date	<u>4/22/03</u>

I hereby certify that this United States public land survey monument record is correct and complete to the best of my knowledge and belief.

Larry D. Hoium Date 4/17/03

Larry D. Hoium, Anoka County Surveyor

Minnesota License Number 18165

CERTIFICATE OF LOCATION OF GOVERNMENT CORNER

County of Anoka

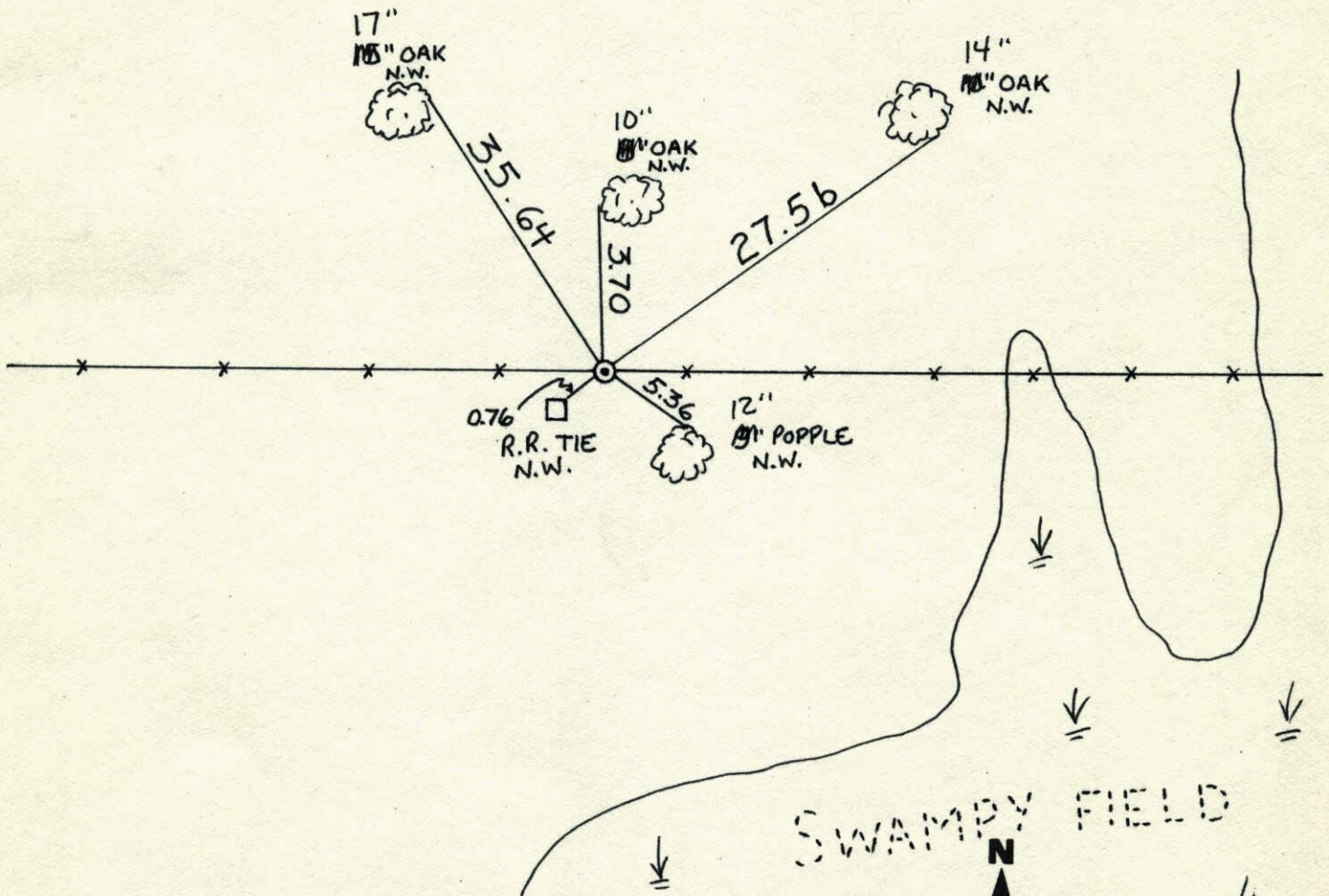
State of Minnesota

EAST QTR. Corner of Sec. 33 Township 34 Range 24

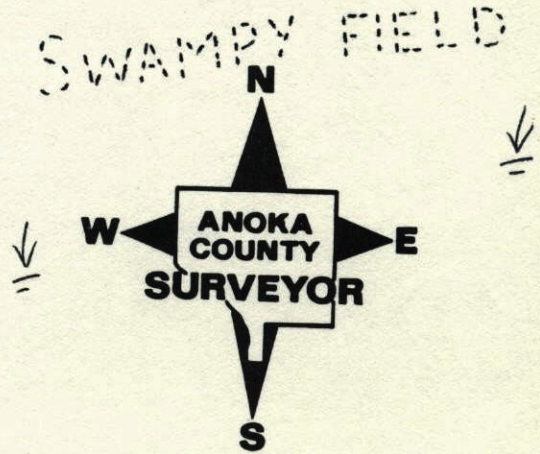
I hereby certify that on the 30 day of JULY, 1964, I found the described corner which was evidenced by RESURVEY

and I further certify that to perpetuate the location of said corner, I did, at the exact location thereof, place a permanent marker consisting of CAST IRON

which reference or witness monuments are located in the manner following:



Revised date	Revised date	Revised date
6-15-87		
7-28-92		
4-17-03		

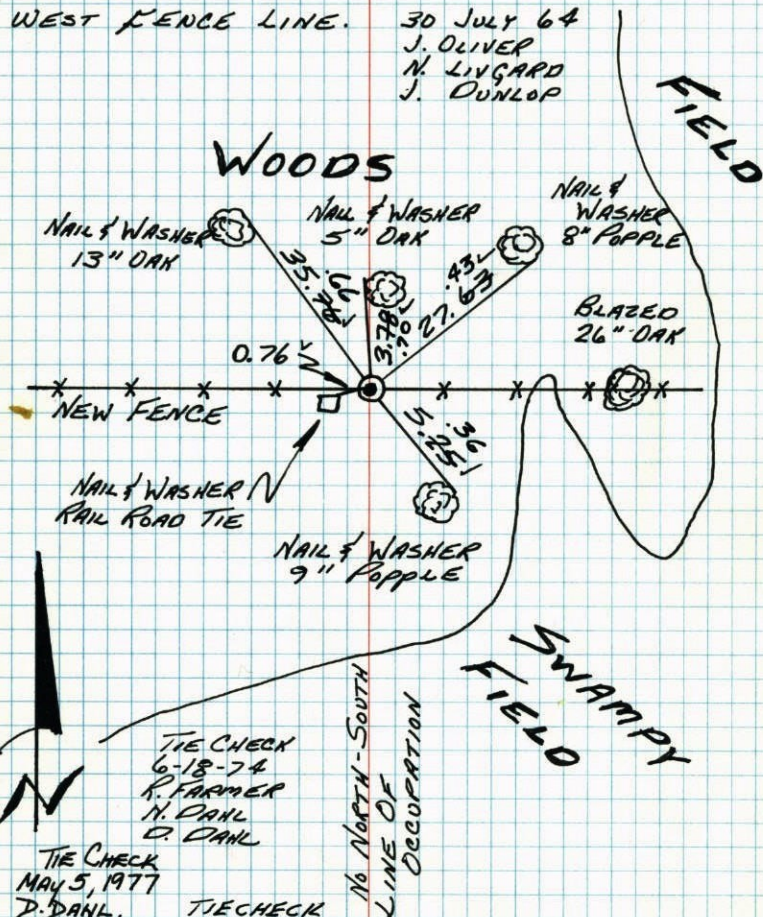


E 1/4 Cor. Sec. 33 - T34 - R24

SET CAST IRON MONUMENT FROM AREA RESURVEY.

CAST IRON UP 0.2' ON OLD BROKEN DOWN EAST-WEST FENCE LINE.

30 July 64

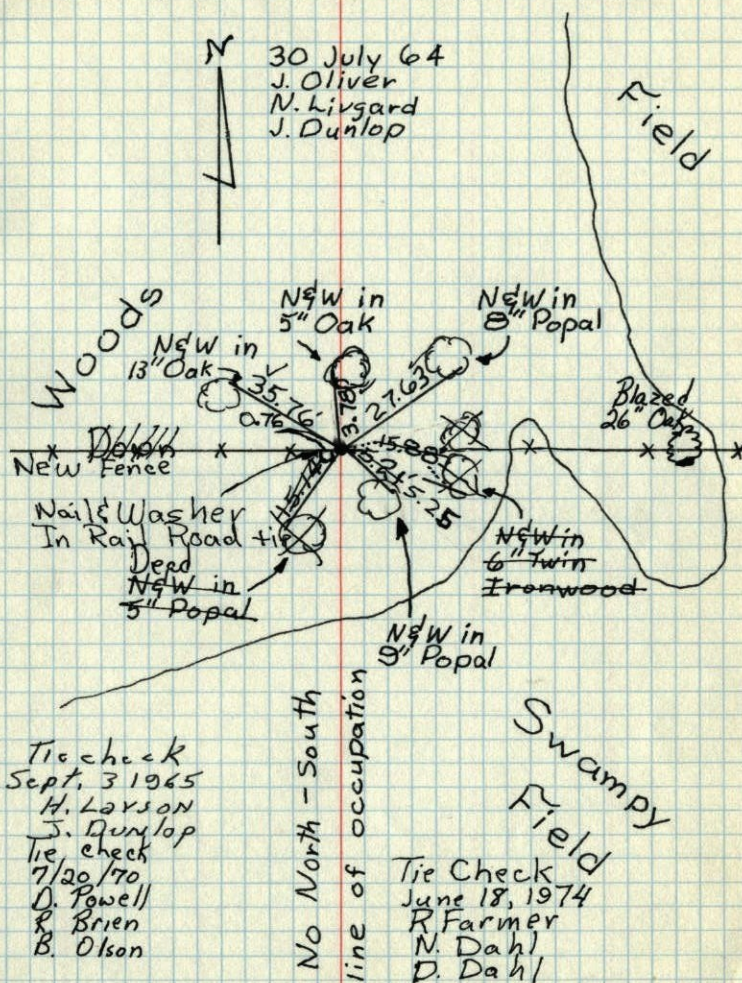
J. OLIVER
N. LIVINGARD
J. DUNLOPTIE CHECK
MAY 5, 1977D. DAHL
S. BRIENTIE CHECK
7-30-89
G. Lips
D. Koss
D. VogelTIE CHECK
8-26-80
B. STEPHENS
P. ROSS
P. BORNBYTEMPERATURE CORRECTED
AND HORIZONTALLY
TAPED MEASUREMENTS
ROLAND W. ANDERSON
COUNTY SURVEYOR
ANOKA COUNTY, MINNESOTA

E 1/4 Cor. Sec. 33, T34, R24

Set Cast Iron Monument from Resurvey.

C.I. Mon. up 0.2' on old Broken down E-W F.W.

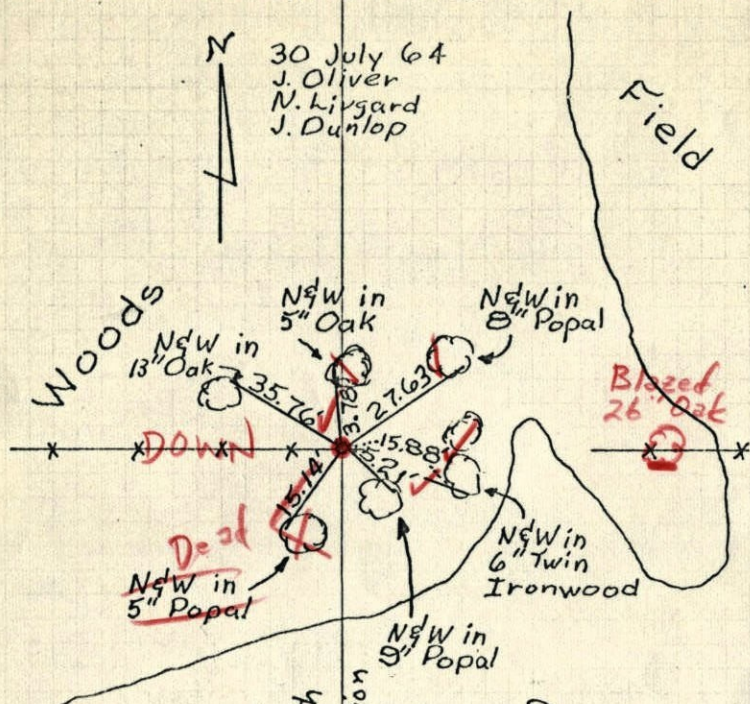
30 July 64

J. Oliver
N. Livingard
J. DunlopTie check
Sept. 3 1965
H. Larson
J. Dunlop
Tie check
7/20/70
D. Powell
R. Brien
B. OlsonTie Check
June 18, 1974
R. Farmer
N. Dahl
D. DahlTEMPERATURE CORRECTED
AND HORIZONTALLY
TAPED MEASUREMENTSROLAND W. ANDERSON
COUNTY SURVEYOR
ANOKA COUNTY, MINNESOTA

E 1/4 Cor. Sec. 33, T34, R24

Set Cast Iron Monument from Resurvey.

C.I. Mon. up 0.2' on old Broken down E-W F.W.



Tri check
Sept. 3 1965
H. Larson
J. Dunlop

7/20/70 Temp
O P
R B
E O

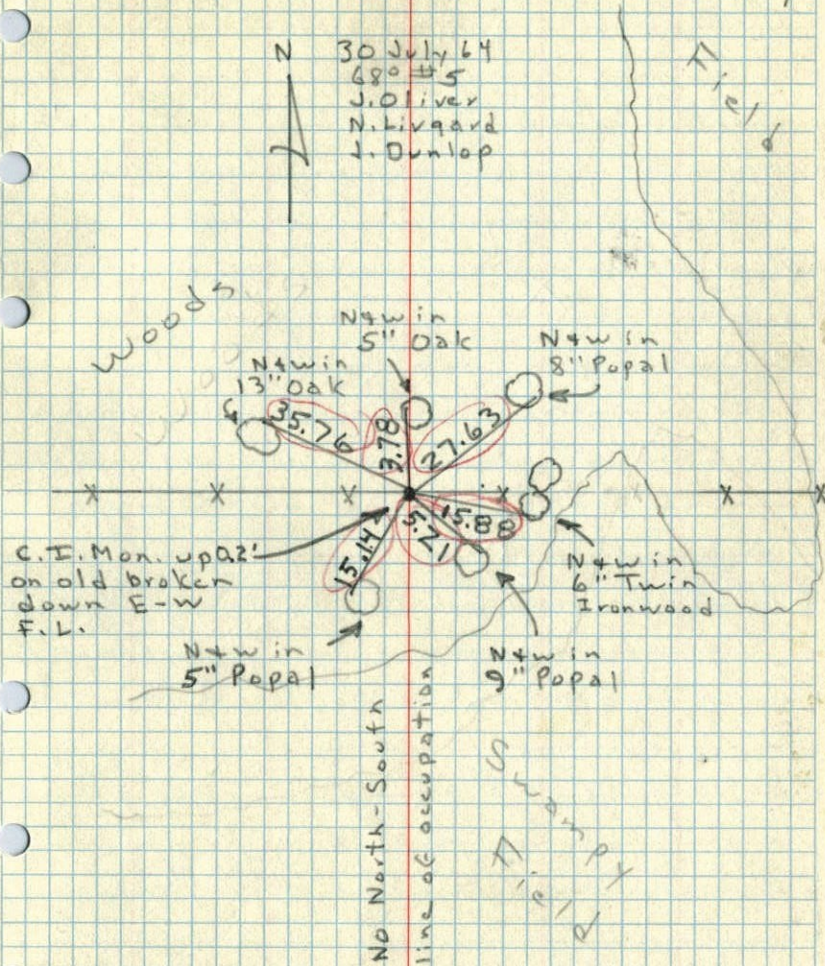
TEMPERATURE CORRECTED
AND HORIZONTALLY
TAPED MEASUREMENTS

ROLAND W. ANDERSON
COUNTY SURVEYOR
ANOKA COUNTY, MINNESOTA

E 1/4 Cor. Sec. 33, T34, R24

Set Cast Iron Monument from Resurvey

N 30 July 64
680 #5
J. Oliver
N. Livgard
J. Dunlop



C.I. Mon. up 0.2'
on old broken
down E-W
F.L.

No North-South
line of occupation

TEMPERATURE CORRECTED
AND HORIZONTALLY
TAPED MEASUREMENTS

ROLAND W. ANDERSON
COUNTY SURVEYOR
ANOKA COUNTY, MINNESOTA