

# CERTIFICATE OF LOCATION OF GOVERNMENT CORNER

County of Anoka                      State of Minnesota

## Northwest Corner of Sec. 27 Township 34 Range 25

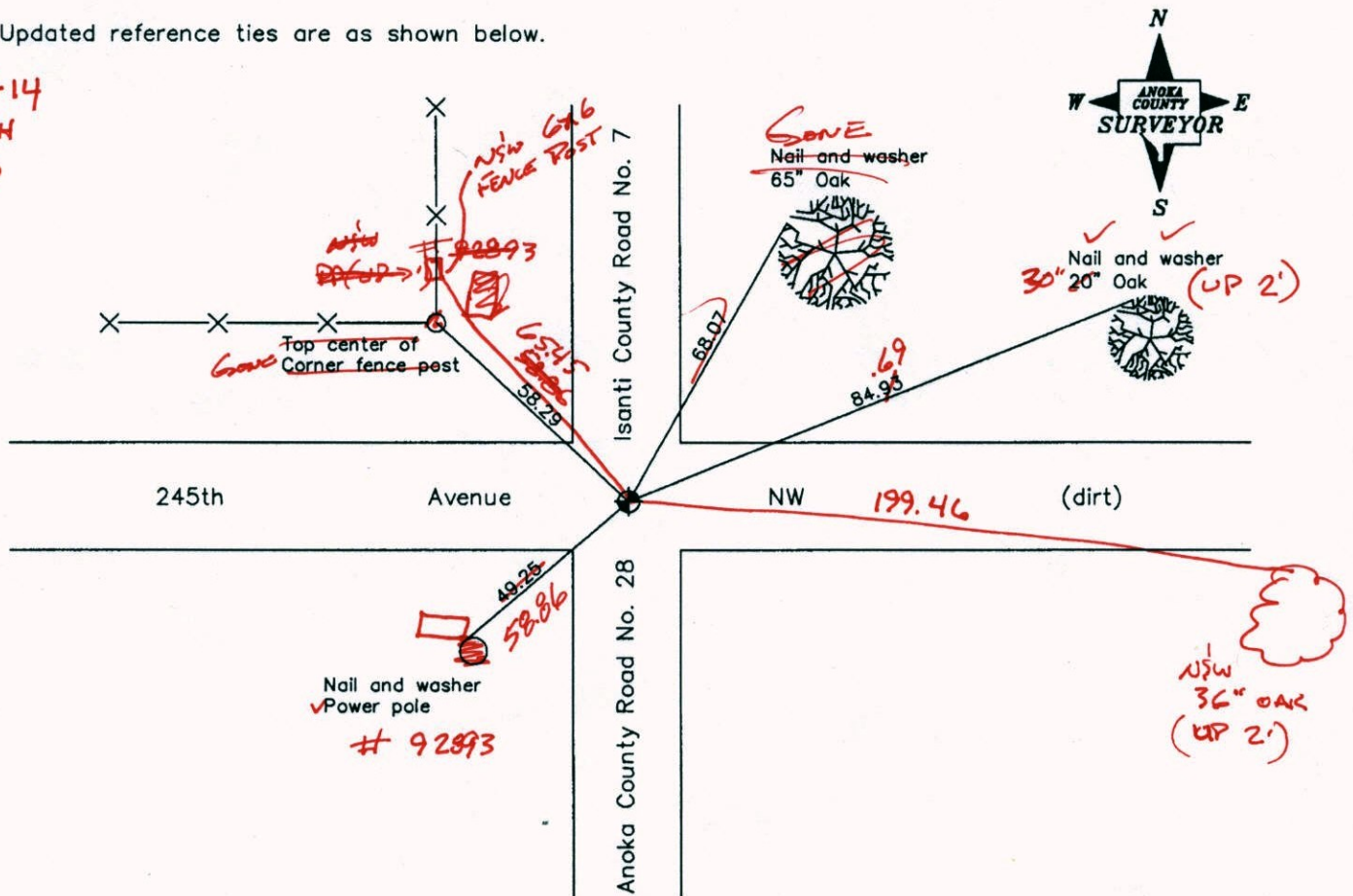
On the 1st day of July, 1970, the described corner was evidenced by an Isanti County cast iron monument

and to perpetuate the location of said corner, at the exact location thereof, a permanent marker was placed consisting of ~~a cast iron monument~~ ALUM. CAP ON REBAR STAMPED (ISANTI) CO. LAND CORNER

AND on the 29th day of April, 2003, said permanent marker was found and the ties were updated

Updated reference ties are as shown below.

3-27-14  
JS SH  
TAPER



Revised date

7/20/92
7/16/97
4/29/03

VRS  
COORD'S

N.A.D. 1983 Coordinates  
(1996 Adjustment)

County Project Coordinates	
Northing	<u>238047.1325</u>
Easting	<u>453009.0722</u>
Date	<u>4/29/03</u>

30 Q: 0.05

N: 238047.1686  
E 453009.0501

I hereby certify that this United States public land survey monument record is correct and complete to the best of my knowledge and belief.

*Larry D. Hoium*                      Date 4/29/03  
 Larry D. Hoium, Anoka County Surveyor  
 Minnesota License Number 18165

# CERTIFICATE OF LOCATION OF GOVERNMENT CORNER

County of Anoka

State of Minnesota

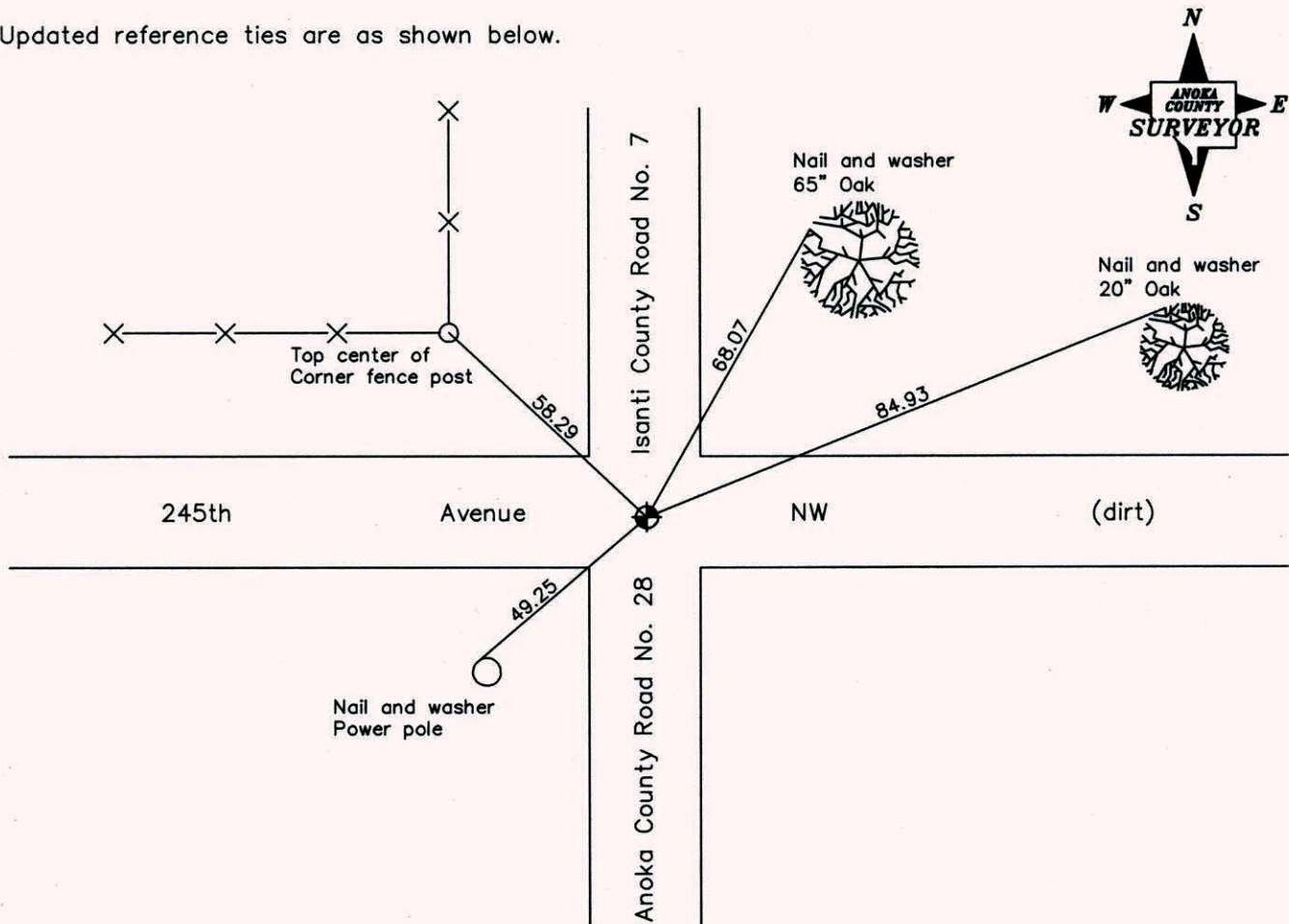
Northwest Corner of Sec. 27 Township 34 Range 25

On the 1st day of July, 1970, the described corner was evidenced by an Isanti County  
cast iron monument

and to perpetuate the location of said corner, at the exact location thereof, a permanent marker  
was placed consisting of a cast iron monument

AND on the 29th day of April, 2003, said permanent marker was found and the ties were  
updated

Updated reference ties are as shown below.



Revised date
7/20/92
7/16/97
4/29/03

N.A.D. 1983 Coordinates (1996 Adjustment)	
County Project Coordinates	
Northing	<u>238047.1325</u>
Easting	<u>453009.0722</u>
Date	<u>4/29/03</u>

I hereby certify that this United States public land survey monument record is correct and complete to the best of my knowledge and belief.

*Larry D. Hoium* Date 4/29/03

Larry D. Hoium, Anoka County Surveyor

Minnesota License Number 18165

# CERTIFICATE OF LOCATION OF GOVERNMENT CORNER

County of Anoka

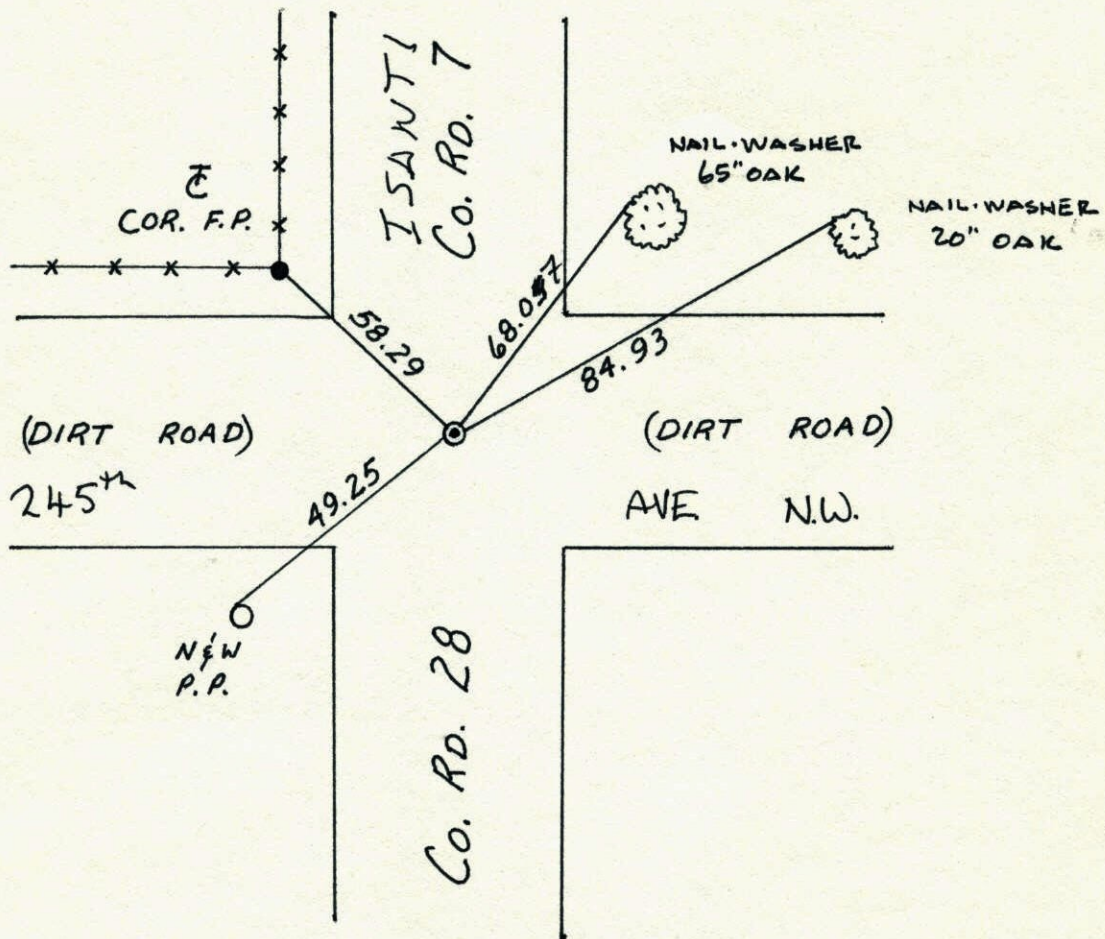
State of Minnesota

NORTHWEST Corner of Sec. 27 Township 34 Range 25

I hereby certify that on the 1<sup>ST</sup> day of JULY, 1970, I found the described corner which was evidenced by ISANTI CO. MONUMENT

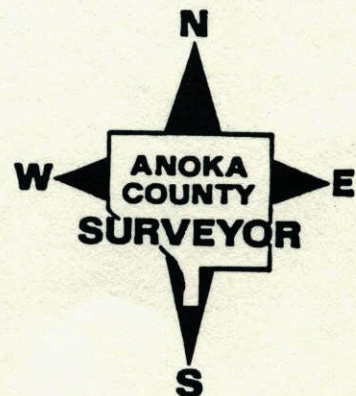
and I further certify that to perpetuate the location of said corner, I did, at the exact location thereof, place a permanent marker consisting of CAST IRON MONUMENT

which reference or witness monuments are located in the manner following:



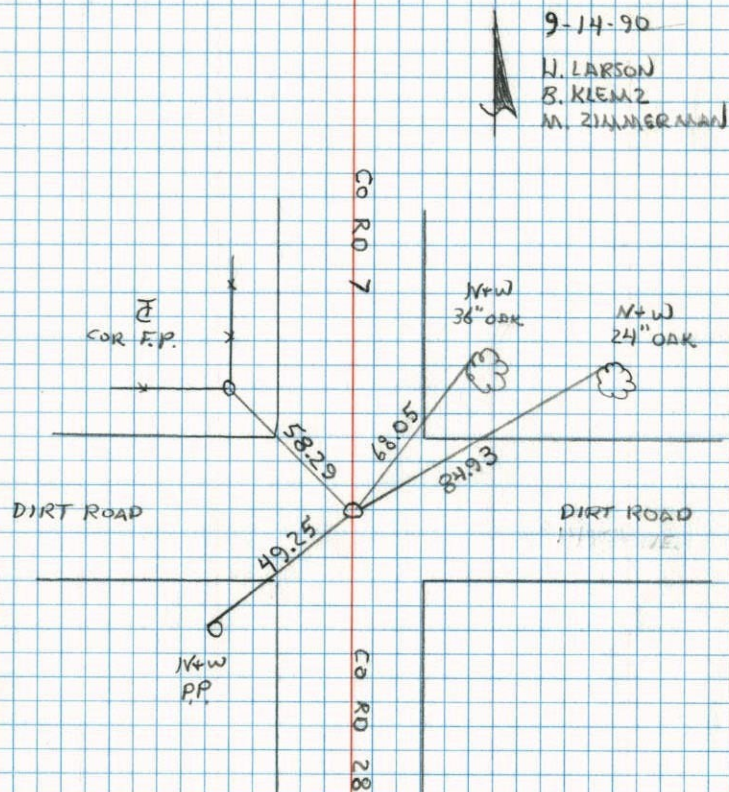
REDRAWN

Revised date	Revised date	Revised date
10-5-90		
9-14-90		
7-20-92		
7-16-97		
4-29-0703		



NW CORNER SECTION 27 T34 R25

REPLACED AFTER CONSTRUCTION



NO. 448

TELEPHONE

NW Cor. Sec. 27-T34-R25

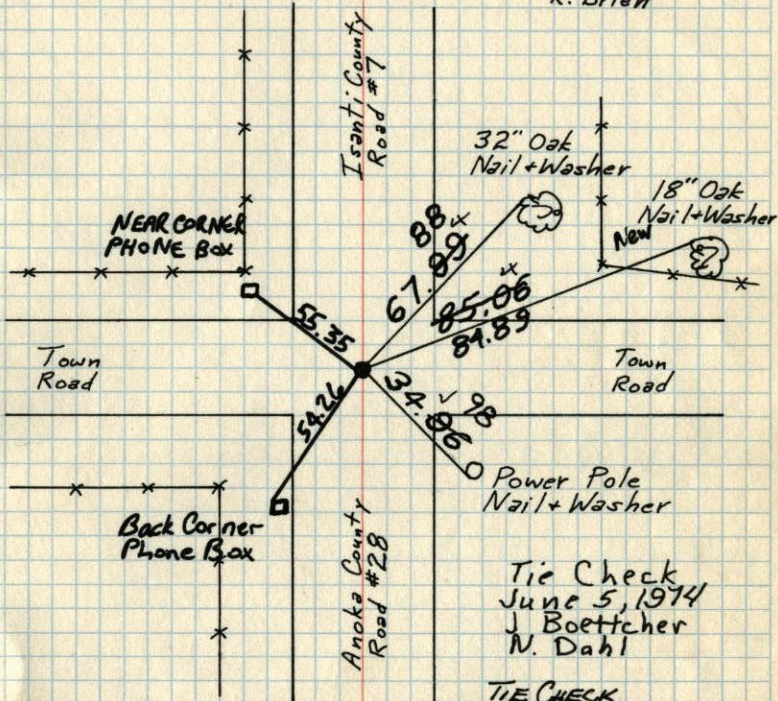
Found Isanti Co. Cast Iron Monument

down 0.14. PK Nails 1.00' North + East.

July 1, 1970

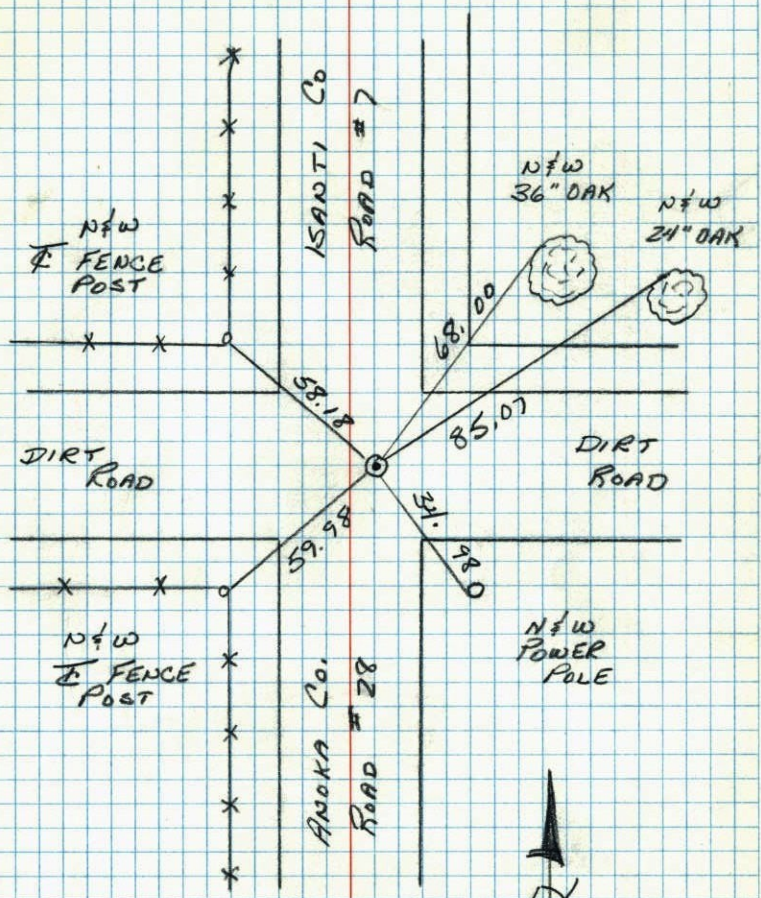
D. Powell

R. Brien

Tie Check  
June 5, 1974  
J. Boettcher  
N. DahlTIE CHECK  
MAY 6, 1977  
J. DAHL  
S. BRIENTie Check  
7-24-89  
G. Lips  
D. Ross  
D. VogelTIE CHECK  
8-27-80  
S. TWADDLE  
G. STOOPSTEMPERATURE CORRECTED ROLAND W. ANDERSON  
AND HORIZONTALLY COUNTY SURVEYOR  
TAPED MEASUREMENTS ANOKA COUNTY, MINNESOTA

# NW CORNER SECTION 27-734-R25

RESET CAST IRON MONUMENT IN PLACE OF BROKEN ONE. PK'S 2.00' N 1/4 E



↑  
 N  
 15 APR 83  
 B. GUETZKO  
 D. DAGLAR  
 TEMP 43°  
 TAPE #3

NO. 448 TELEPHONE

# X SE COR SEC 27-34-25

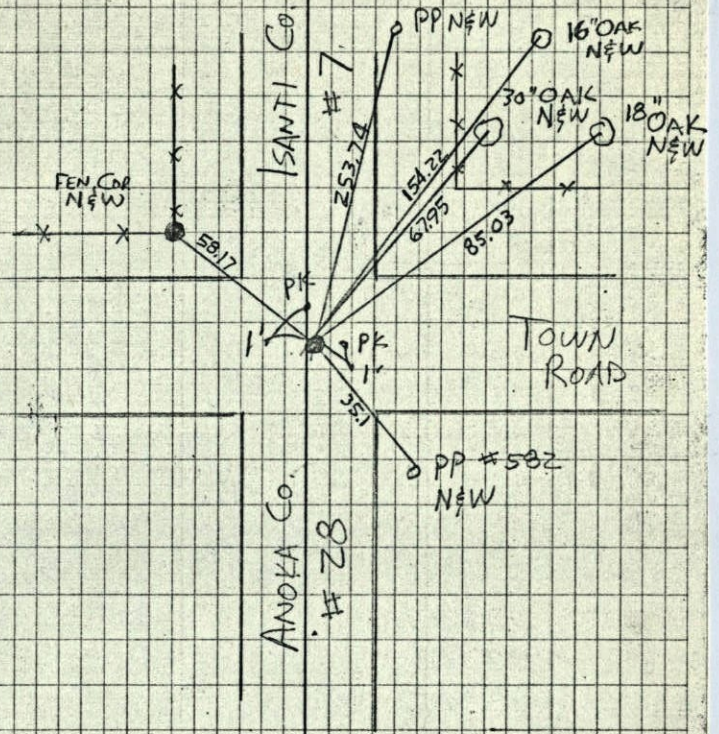
K  
RICK  
MS

~~SE~~  
NE  
NW

SET BY TIES  
SET ISANTI Co. MON

28  
27

7-22-66  
80° CLOUDY



DIETZGEN NO. 384-3

## N. C. Hoium and Associates, Inc.

LAND SURVEYORS

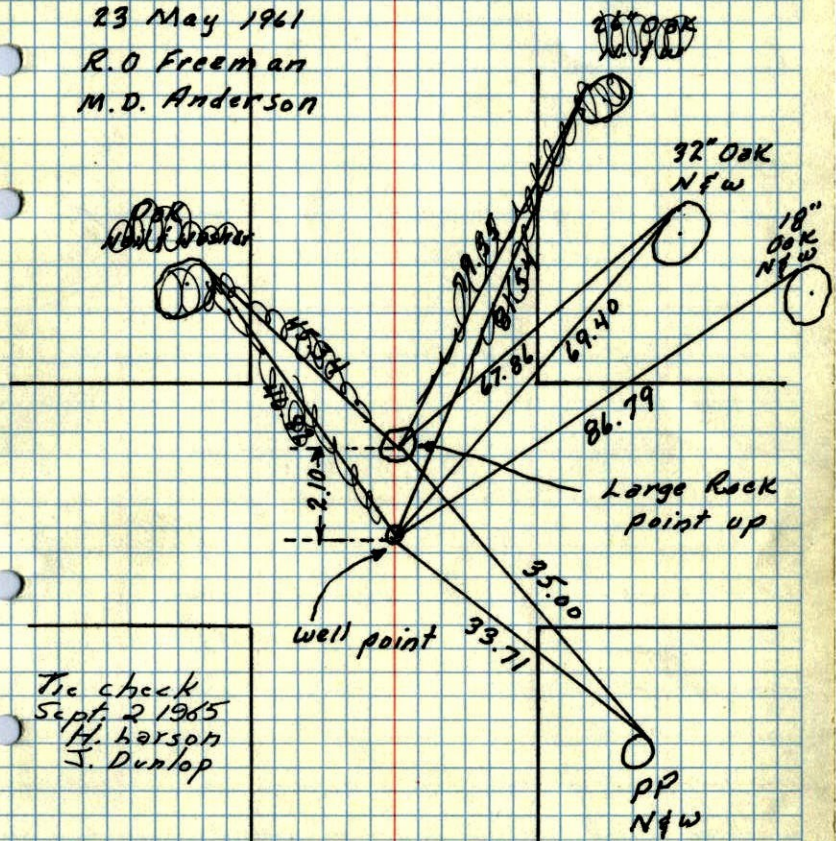
10731 Mississippi Blvd. N. W.  
Coon Rapids, Minnesota 55433

PK-NCH  
1

N.W. Cor. Sec. 27-34-25 St. Francis

Found Large Stone with point up & old well point 3.0± So down 2.0±

23 May 1961  
R.O. Freeman  
M.D. Anderson



Tie check  
Sept. 2, 1965  
H. Larson  
J. Dunlop

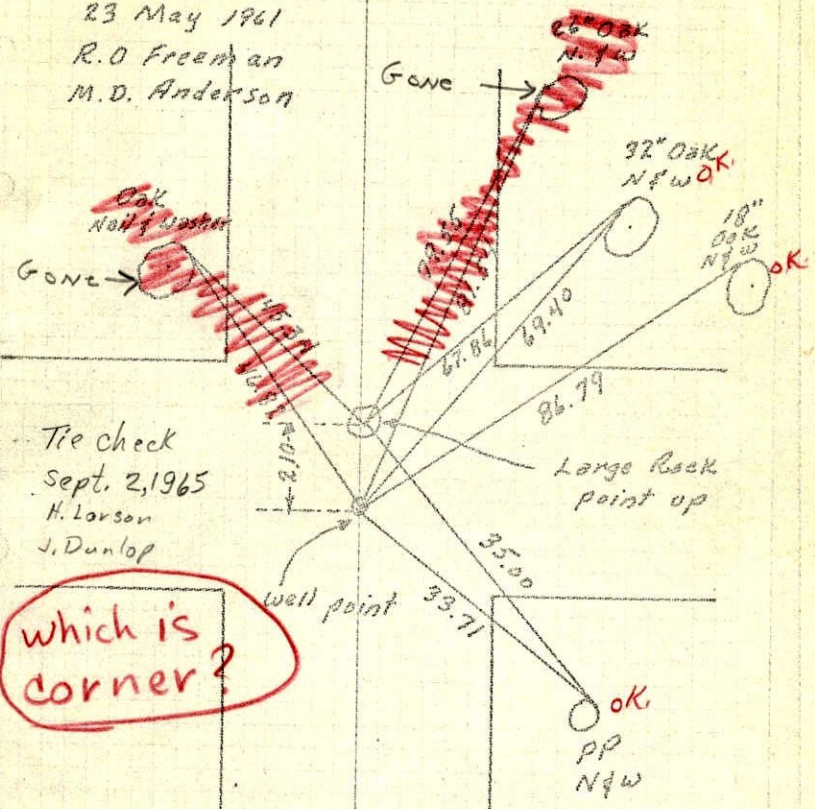
**ROLAND W. ANDERSON**  
COUNTY SURVEYOR  
ANOKA COUNTY, MINNESOTA

**TEMPERATURE CORRECTED  
AND HORIZONTALLY  
TAPED MEASUREMENTS**

N.W. Cor. Sec. 27-34-25 St. Francis

Found Large Stone with point up & old well point 3.0± So down 2.0±

23 May 1961  
R.O. Freeman  
M.D. Anderson



Tie check  
Sept. 2, 1965  
H. Larson  
J. Dunlop

which is corner?

**ROLAND W. ANDERSON**  
COUNTY SURVEYOR  
ANOKA COUNTY, MINNESOTA

**TEMPERATURE CORRECTED  
AND HORIZONTALLY  
TAPED MEASUREMENTS**

Entered  
HL

