

CERTIFICATE OF LOCATION OF GOVERNMENT CORNER

County of Anoka

State of Minnesota

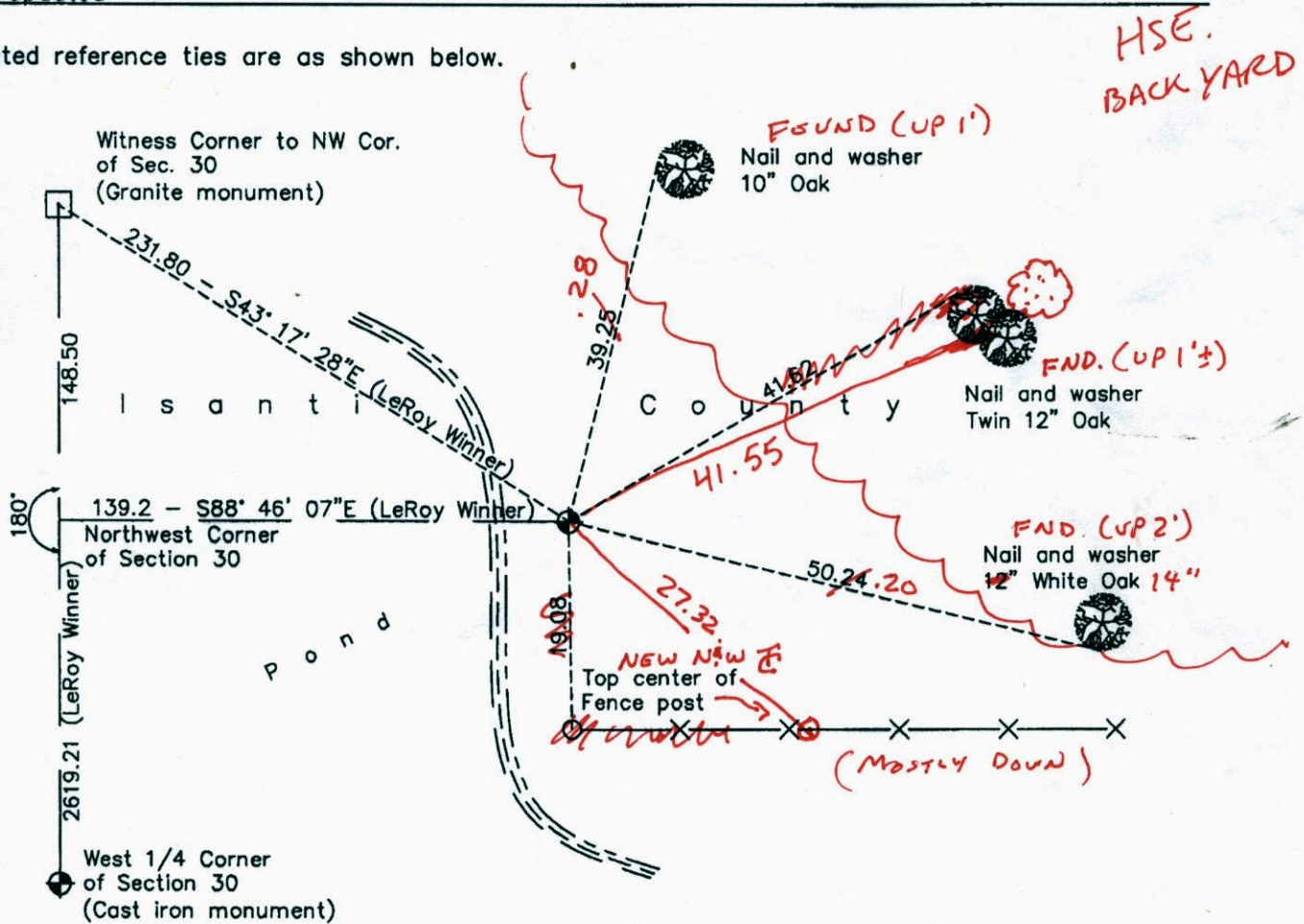
Witness Corner of Sec. 30 Township 34 Range 25
(On north line of section)

On the 7th day of July, 1969, the described corner was evidenced by a cast iron monument

and to perpetuate the location of said corner, at the exact location thereof, a permanent marker was placed consisting of the same cast iron monument SIP ON N. SIDE OF MON.

AND on the 20th day of January, 2005, said permanent marker was found and the ties were updated

Updated reference ties are as shown below.



7-31-14
BK-55
TAPED

VRS

ANOKA COUNTY SURVEYOR

Revision Date 11/09/10

N.A.D. 1983 Coordinates
(1996 Adjustment)

County Project Coordinates	
Northing	238378.4589
Easting	437622.9382
Date	1/20/05

I hereby certify that this United States public land survey monument record is correct and complete to the best of my knowledge and belief.

Larry D. Hoium Date 11/09/10

Larry D. Hoium, Anoka County Surveyor
Minnesota License Number 18165

3DQ = 0.07 N = 238378.4755 E = 437622.8745

CERTIFICATE OF LOCATION OF GOVERNMENT CORNER

County of Anoka

State of Minnesota

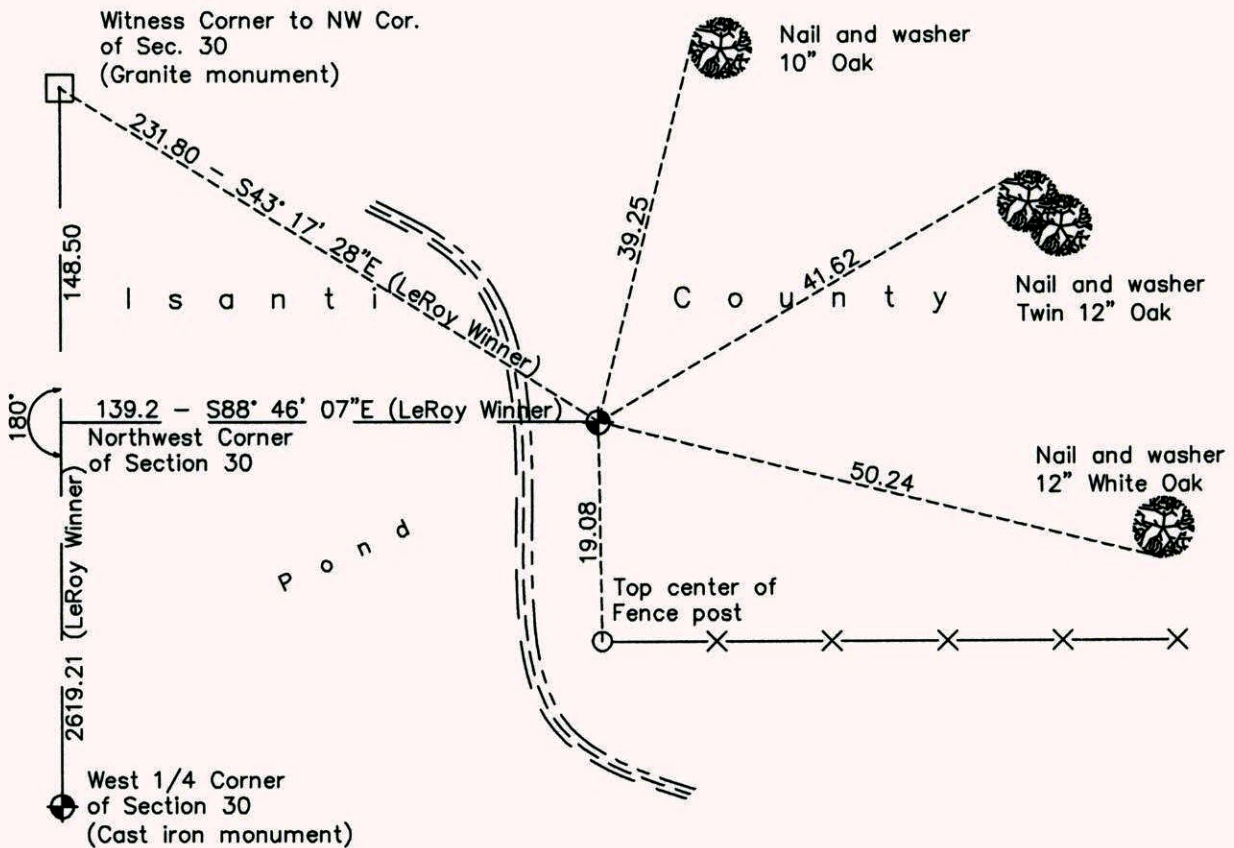
Witness Corner of Sec. 30 Township 34 Range 25
 (On north line of section)

On the 7th day of July, 1969, the described corner was evidenced by a cast iron
monument

and to perpetuate the location of said corner, at the exact location thereof, a permanent marker
 was placed consisting of the same cast iron monument

AND on the 20th day of January, 2005, said permanent marker was found and the ties
were updated

Updated reference ties are as shown below.



N
 W ANOKA COUNTY SURVEYOR E
 S

Revision Date
11/09/10

N.A.D. 1983 Coordinates
 (1996 Adjustment)

County Project Coordinates	
Northing	238378.4589
Easting	437622.9382
Date	1/20/05

I hereby certify that this United States public land survey monument record is correct and complete to the best of my knowledge and belief.

Larry D. Hoium Date 11/09/10

Larry D. Hoium, Anoka County Surveyor
 Minnesota License Number 18165

CERTIFICATE OF LOCATION OF GOVERNMENT CORNER

County of Anoka

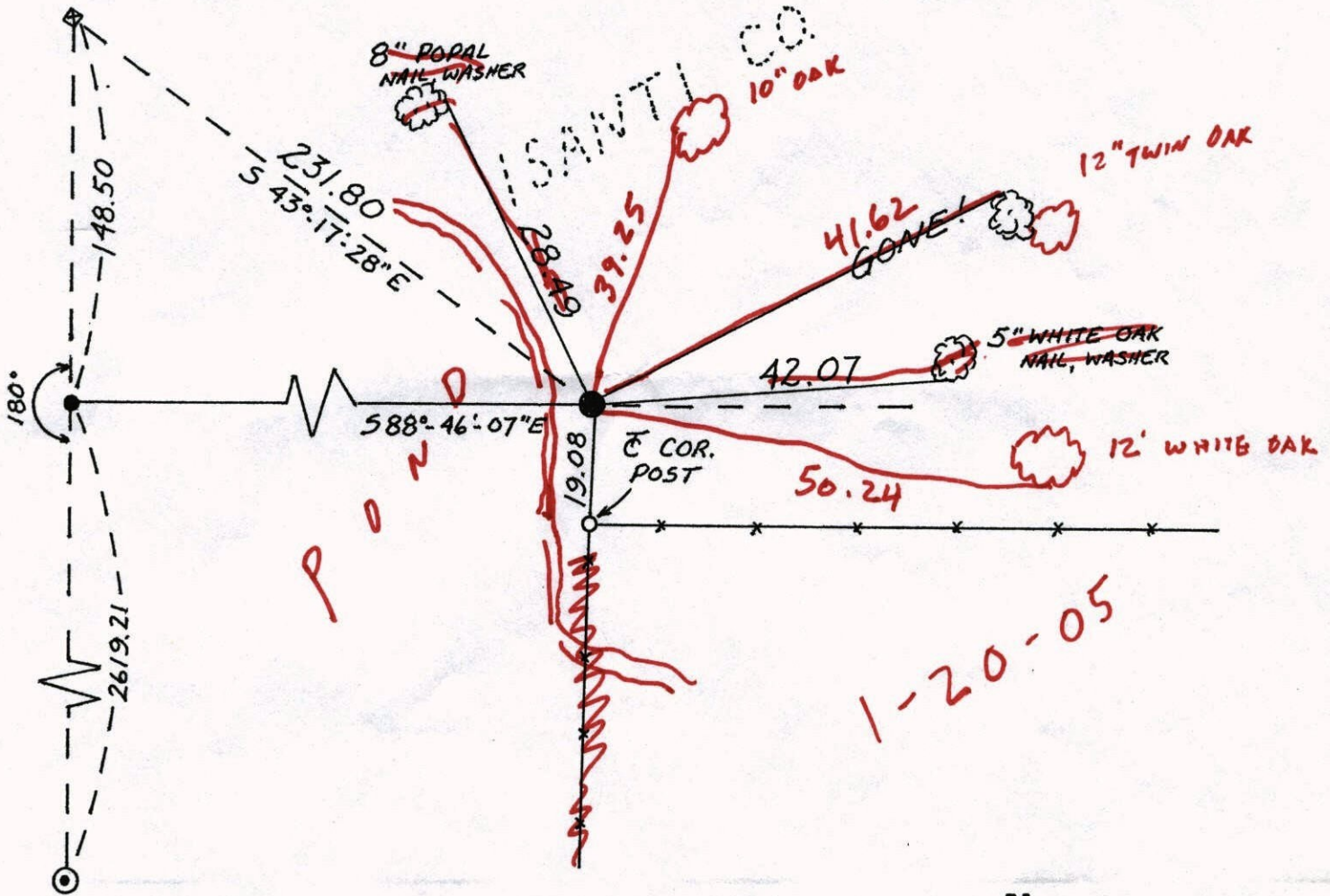
State of Minnesota

W.C. ON N. LINE Corner of Sec. 30 Township 34 Range 25

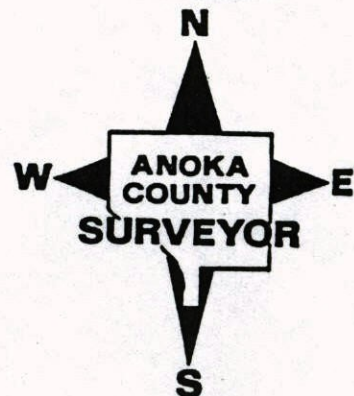
I hereby certify that on the 7 day of JULY, 1969, I found the described corner which was evidenced by CAST IRON

and I further certify that to perpetuate the location of said corner, I did, at the exact location thereof, place a permanent marker consisting of CAST IRON

which reference or witness monuments are located in the manner following:



Revised date	Revised date	Revised date
WET 87		



DOWE
11/09/10
L.H.

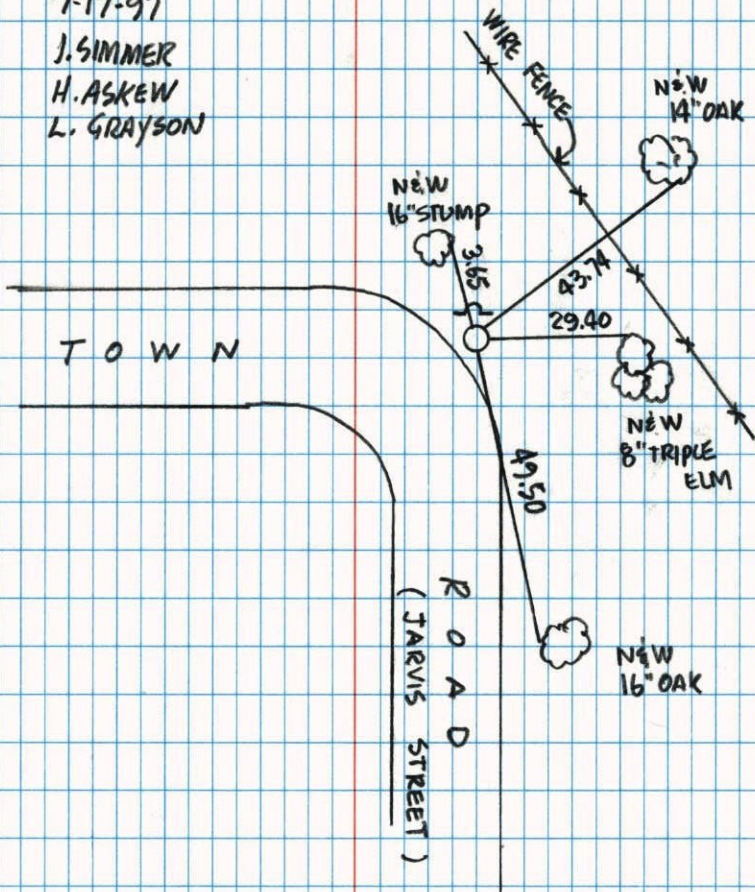
WEST 1/4 COR. SEC 30 T 34 R 25

RETIED CAST IRON SIGN & POST
ON NORTH SIDE

7-17-97
J. SIMMER
H. ASKEW
L. GRAYSON

NO. 446

NATIONAL POINTFAST



CERTIFICATE OF LOCATION OF GOVERNMENT CORNER

County of Anoka

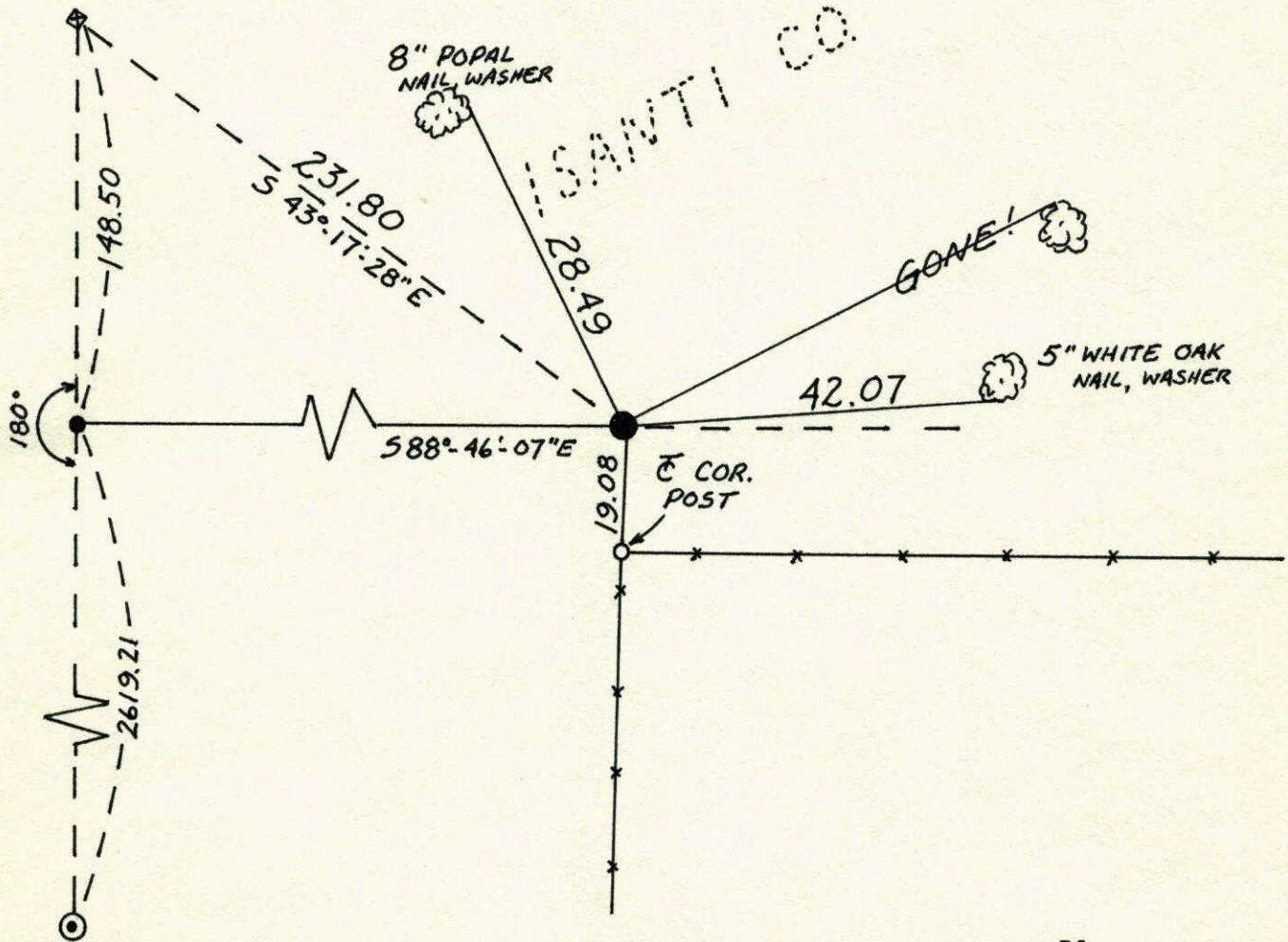
State of Minnesota

W.C. ON N. LINE Corner of Sec. 30 Township 34 Range 25

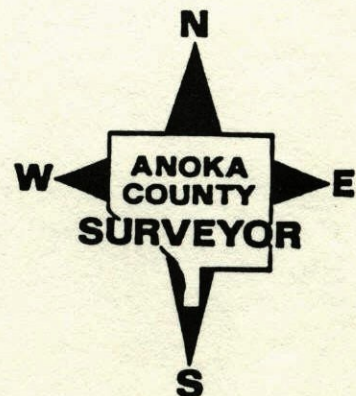
I hereby certify that on the 7 day of JULY, 1969, I found the described corner which was evidenced by CAST IRON

and I further certify that to perpetuate the location of said corner, I did, at the exact location thereof, place a permanent marker consisting of CAST IRON

which reference or witness monuments are located in the manner following:



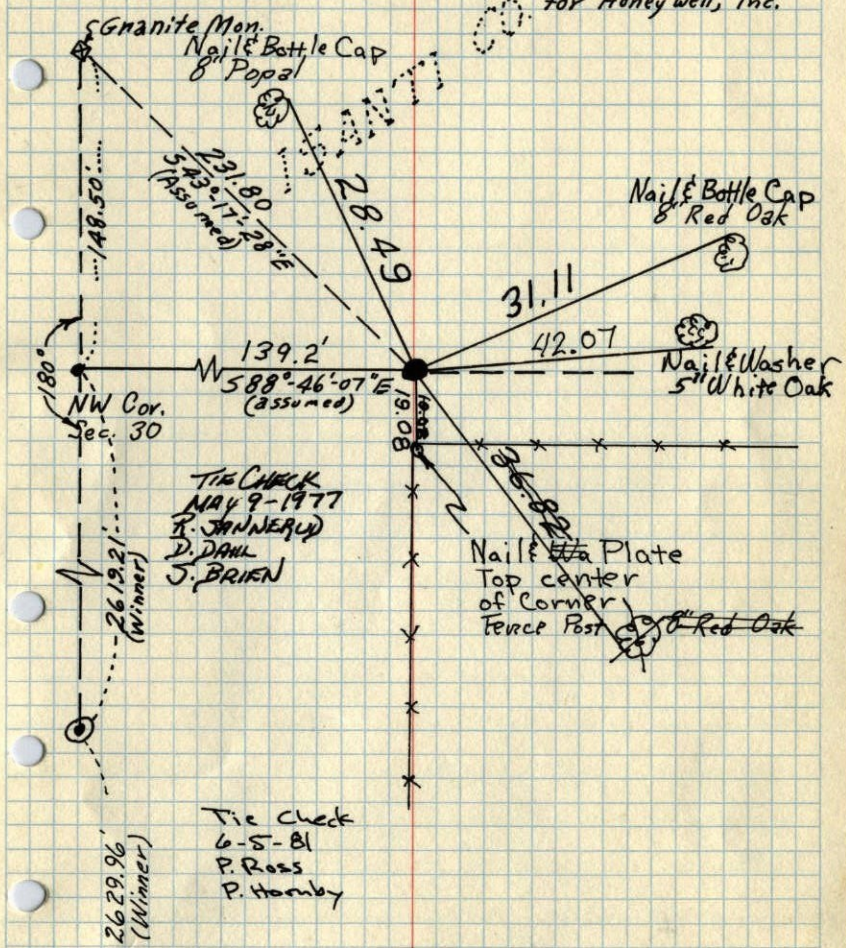
Revised date	Revised date	Revised date
WET 87		



W.C. on North Line of Sec. 30-T34-R25

East side of swamp

Anoka County Cast Iron Mon. Set by LeRoy Winner
July 7, 1969
for Honeywell, Inc.



TEMPERATURE CORRECTED
AND HORIZONTALLY
TAPED MEASUREMENTS

ROLAND W. ANDERSON
COUNTY SURVEYOR
ANOKA COUNTY, MINNESOTA