

# CERTIFICATE OF LOCATION OF GOVERNMENT CORNER

County of Anoka

State of Minnesota

## Witness Corner of Sec. 30 Township 34 Range 25

(On west line of section)

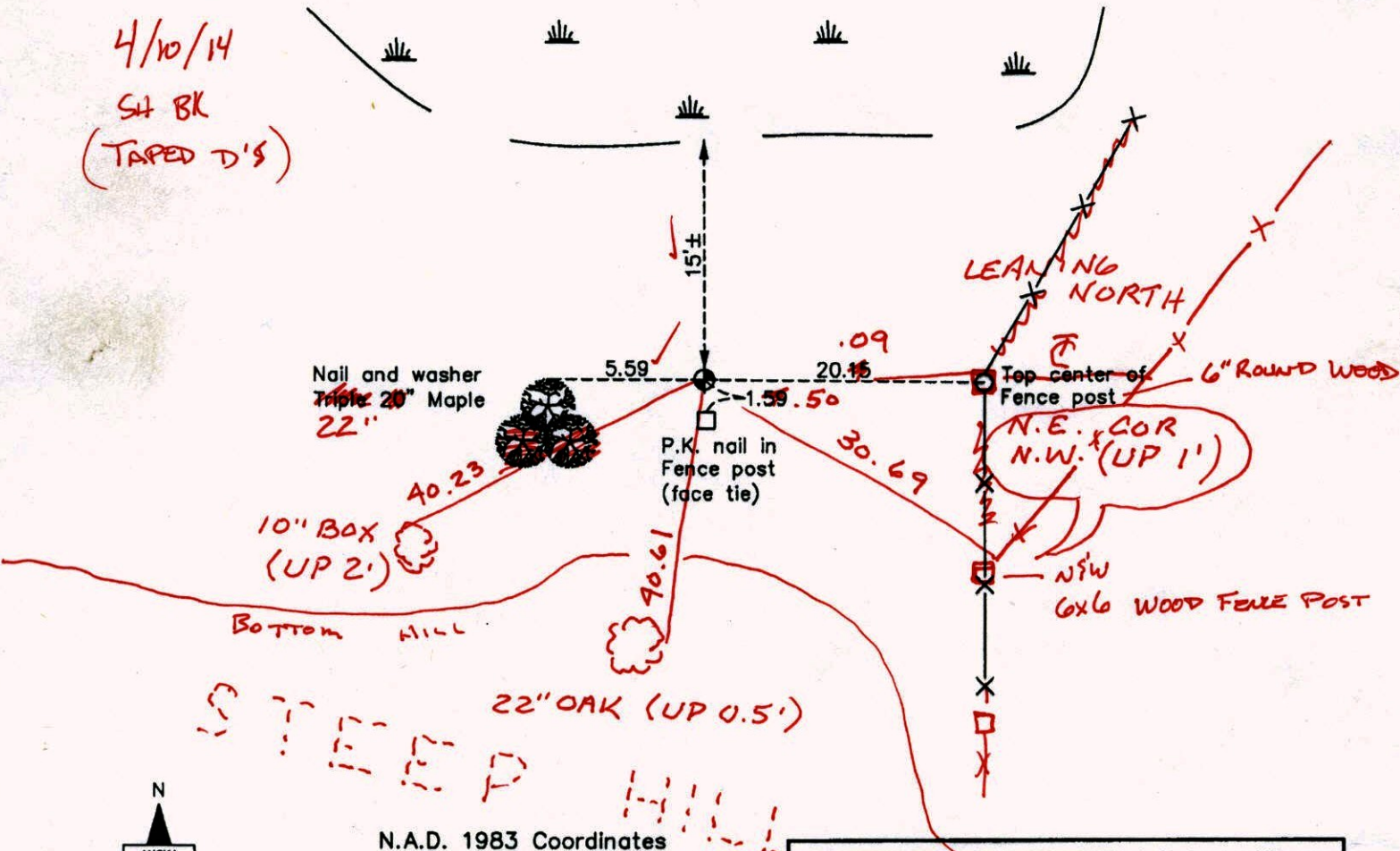
On the 7th day of July, 1969, the described corner was evidenced by a cast iron monument set by Leroy Winner

and to perpetuate the location of said corner, at the exact location thereof, a permanent marker was placed consisting of the same cast iron monument FLUSH

AND on the      day of January, 2005, said permanent marker was found and the ties were updated

Updated reference ties are as shown below.

4/10/14  
SH BK  
(TAPED D'S)



Revision Date  
12/01/10

N.A.D. 1983 Coordinates  
(1996 Adjustment)

County Project Coordinates	
Northing	237739.6829
Easting	437485.4153
Date	1/20/05

I hereby certify that this United States public land survey monument record is correct and complete to the best of my knowledge and belief.

*Larry D. Holum* Date 12/01/10

Larry D. Holum, Anoka County Surveyor  
Minnesota License Number 18165

STEEP HILL

TOP HILL

# CERTIFICATE OF LOCATION OF GOVERNMENT CORNER

County of Anoka

State of Minnesota

## Witness Corner of Sec. 30 Township 34 Range 25

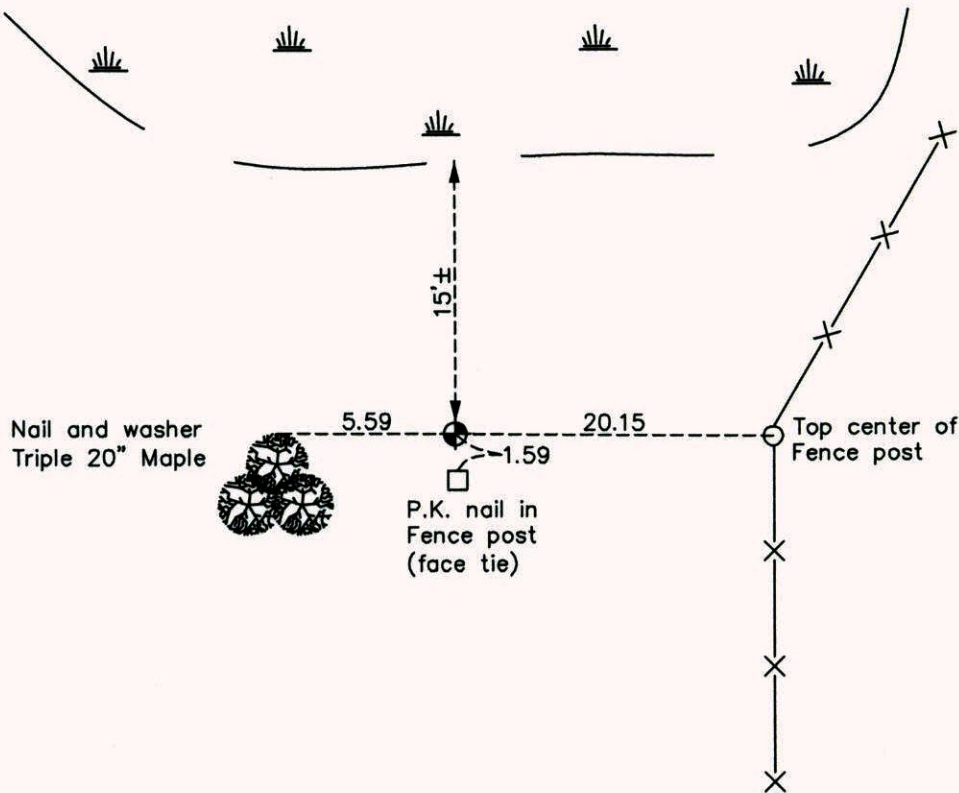
(On west line of section)

On the 7th day of July, 1969, the described corner was evidenced by a cast iron monument set by Leroy Winner

and to perpetuate the location of said corner, at the exact location thereof, a permanent marker was placed consisting of the same cast iron monument

AND on the \_\_\_ day of January, 2005, said permanent marker was found and the ties were updated

Updated reference ties are as shown below.



N

S

W      E

Revision Date

12/01/10

N.A.D. 1983 Coordinates  
(1996 Adjustment)

County Project Coordinates	
Northing	237739.6829
Easting	437485.4153
Date	1/20/05

I hereby certify that this United States public land survey monument record is correct and complete to the best of my knowledge and belief.

*Larry D. Hoium*      Date 12/01/10

Larry D. Hoium, Anoka County Surveyor

Minnesota License Number 18165

# CERTIFICATE OF LOCATION OF GOVERNMENT CORNER

County of Anoka

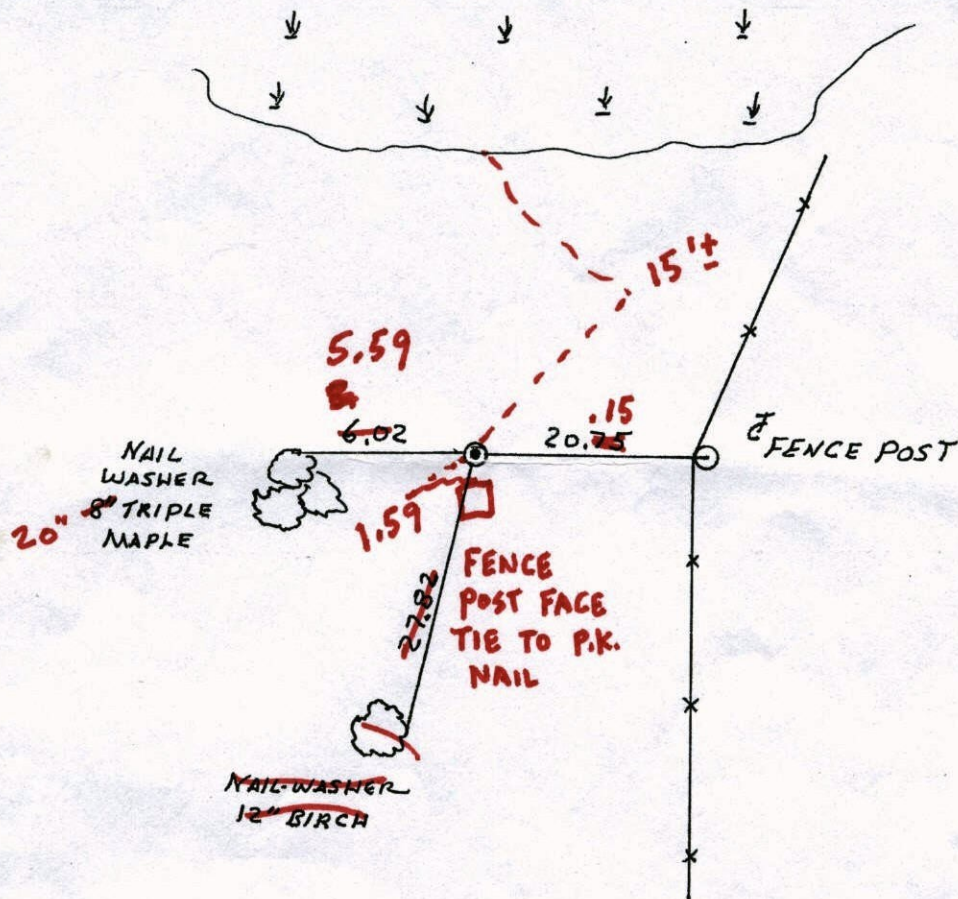
State of Minnesota

W.C. ON WEST LINE Corner of Sec. 30 Township 34 Range 25

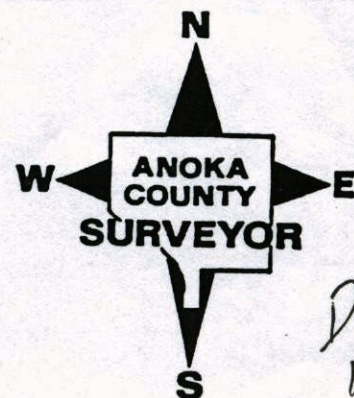
I hereby certify that on the 7<sup>TH</sup> day of JULY, 1969, I found the described corner which was evidenced by CAST IRON SET BY L. WINNER

and I further certify that to perpetuate the location of said corner, I did, at the exact location thereof, place a permanent marker consisting of CAST IRON MONUMENT

which reference or witness monuments are located in the manner following:



Revised date	Revised date	Revised date
6-10-74		
5-9-77		
5-28-81		
6-19-87		
REDRAWN 12-18-91 HL		



Done  
12/01/10  
LH

# CERTIFICATE OF LOCATION OF GOVERNMENT CORNER

County of Anoka

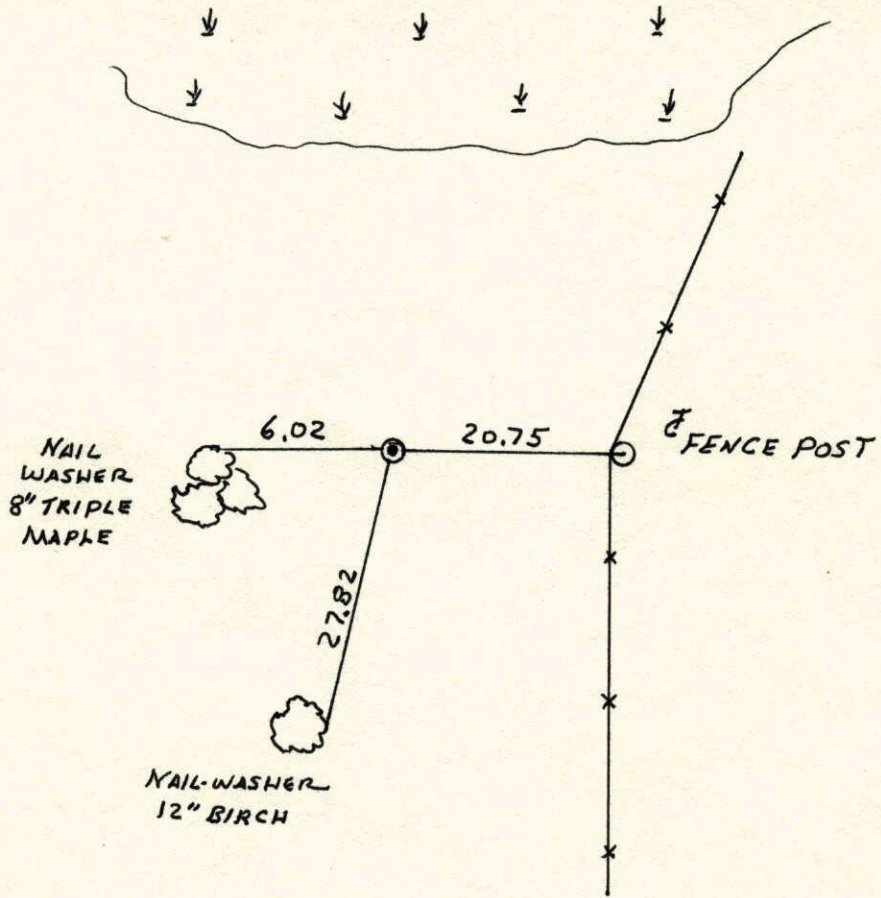
State of Minnesota

W.C. ON WEST LINE Corner of Sec. 30 Township 34 Range 25

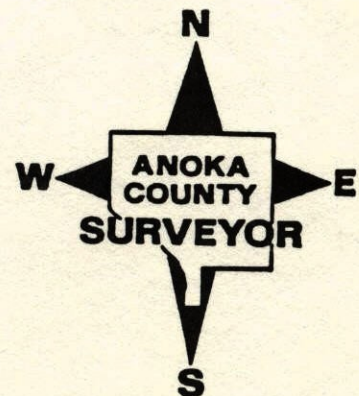
I hereby certify that on the 7<sup>TH</sup> day of JULY, 1969, I found the described corner which was evidenced by CAST IRON SET BY L. WINNER

and I further certify that to perpetuate the location of said corner, I did, at the exact location thereof, place a permanent marker consisting of CAST IRON MONUMENT

which reference or witness monuments are located in the manner following:

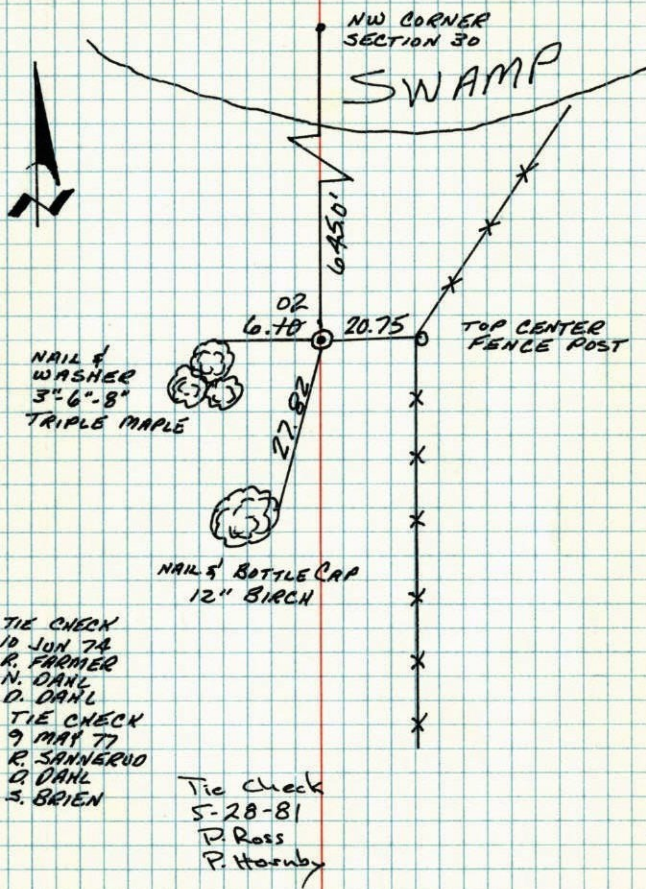


Revised date	Revised date	Revised date
6-10-74		
5-9-77		
5-28-81		
6-19-87		
REDRAWN 12-18-91 HL		



# WITNESS CORNER ON WEST LINE OF SECTION 30-T34-R25

ANOAKA COUNTY CAST IRON MONUMENT SET BY  
LEROY WINNER, 7 JUL 69, FOR HONEYWELL, INC.  
SOUTH SIDE OF SWAMP



TEMPERATURE CORRECTED  
AND HORIZONTALLY  
TAPED MEASUREMENTS

ROLAND W. ANDERSON  
COUNTY SURVEYOR  
ANOAKA COUNTY, MINNESOTA

# W.C. on West Line of Sec. 30-T34-R25

South Side of swamp

Anoka County Cast Iron Mon. Set by LeRoy Winner  
July 7, 1969  
for Honeywell, Inc.

