

CERTIFICATE OF LOCATION OF GOVERNMENT CORNER

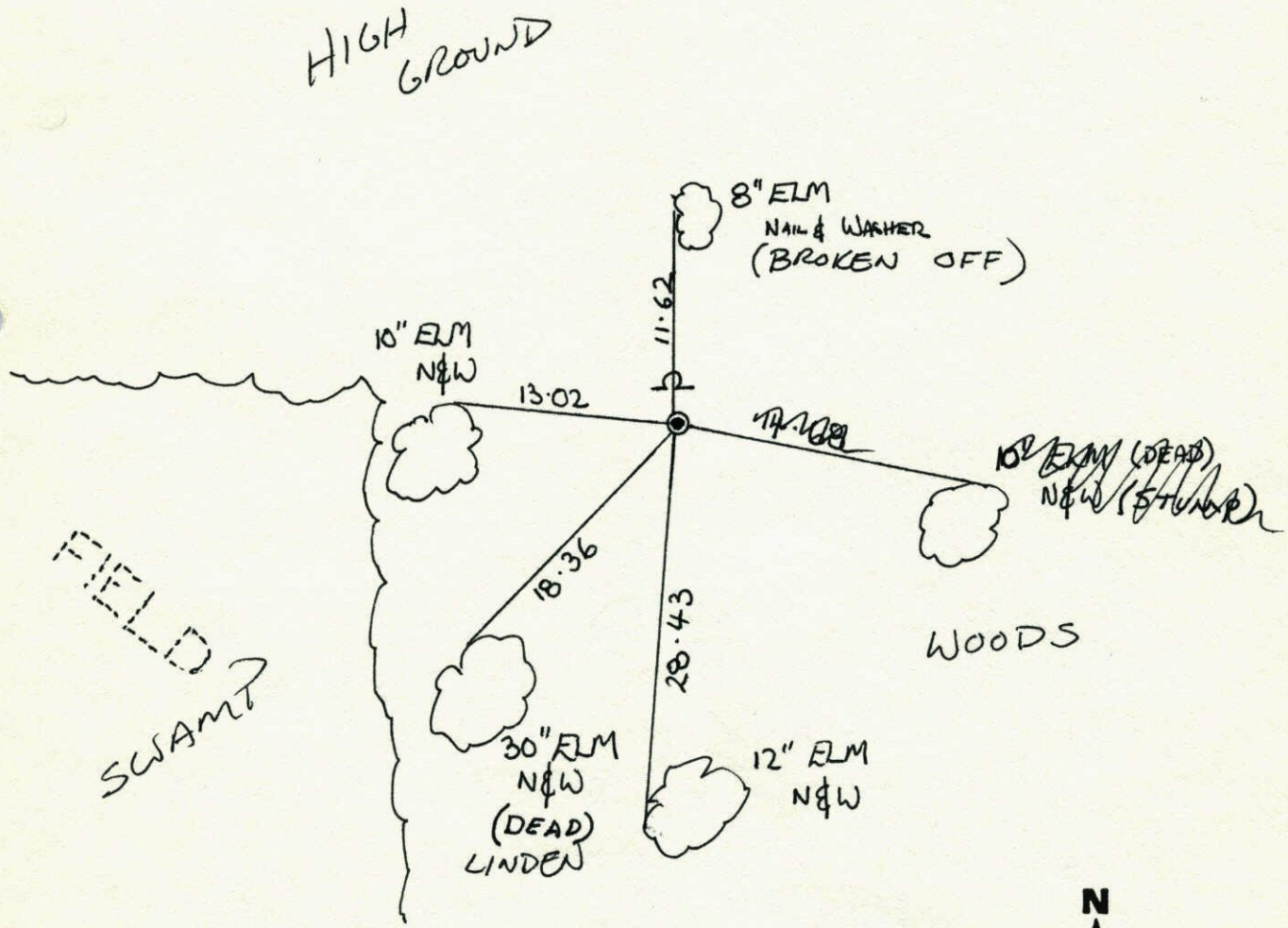
County of Anoka State of Minnesota

WEST QUARTER Corner of Sec. 26 Township 34 Range 25

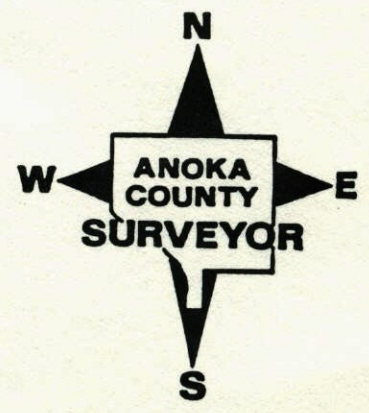
I hereby certify that on the 10th day of AUGUST, 1976, I found the described corner which was evidenced by AREA RESURVEY

and I further certify that to perpetuate the location of said corner, I did, at the exact location thereof, place a permanent marker consisting of CAST IRON MONUMENT WITH SIGN & POST ON NORTH SIDE

which reference or witness monuments are located in the manner following:

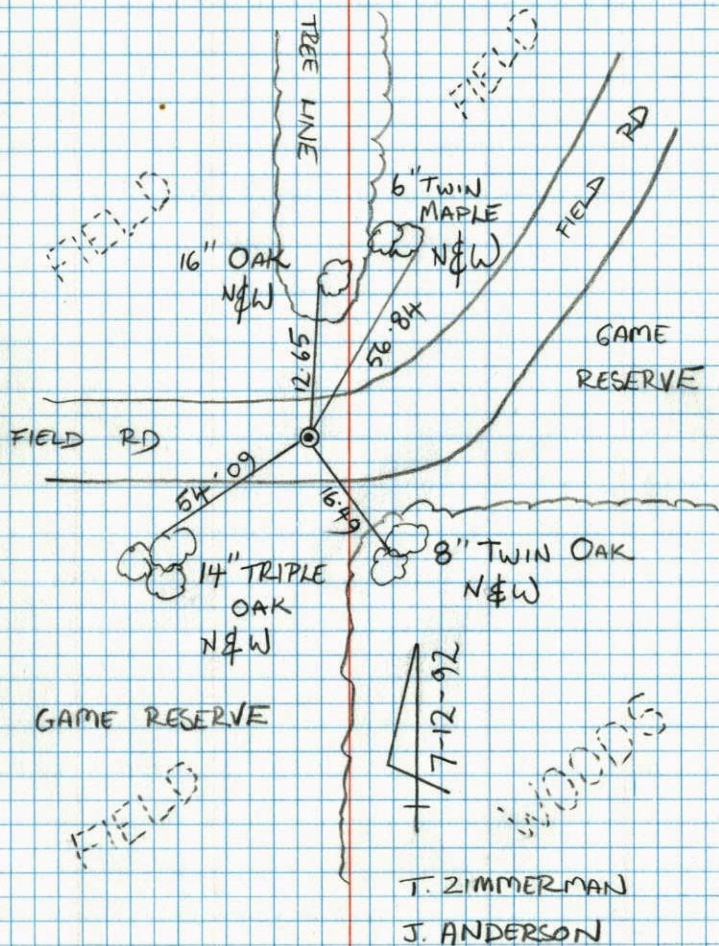


Revised date	Revised date	Revised date
6-24-87		
4-30-03		



West
 RETIE EAST $\frac{1}{4}$ Sec 27 T34 R24
 CAST IRON MONUMENT

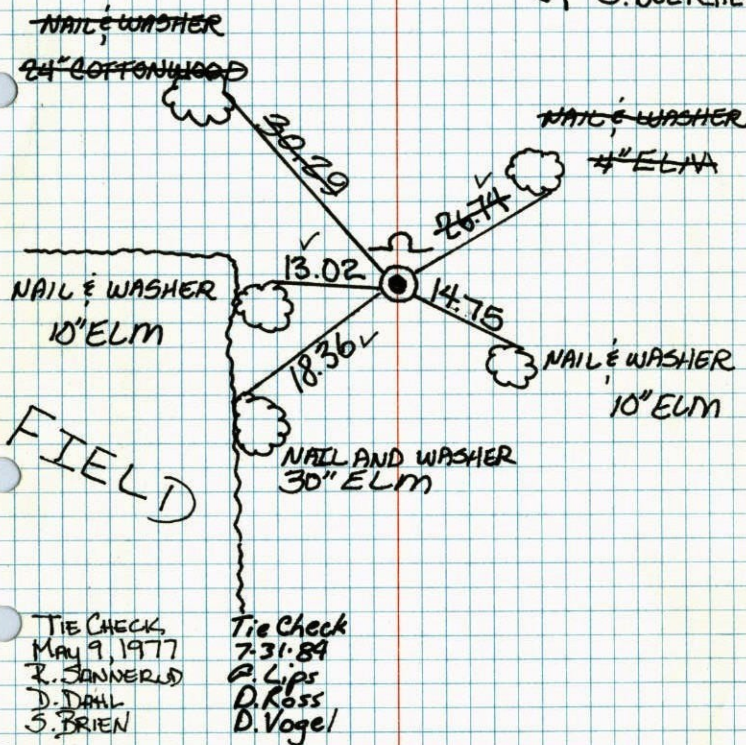
25 Pg 20



63
 W $\frac{1}{4}$ COR. SEC. 26, T34, R25

SET CAST IRON MONUMENT FROM
 AREA RESURVEY. C. I. FLUSH WITH
 SIGN AND POST ON NORTH SIDE.

8-10-76
 H. LARSON
 B. GÜETZKO
 J. BOETCHER



TEMPERATURE CORRECTED
 AND HORIZONTALLY
 TAPED MEASUREMENTS

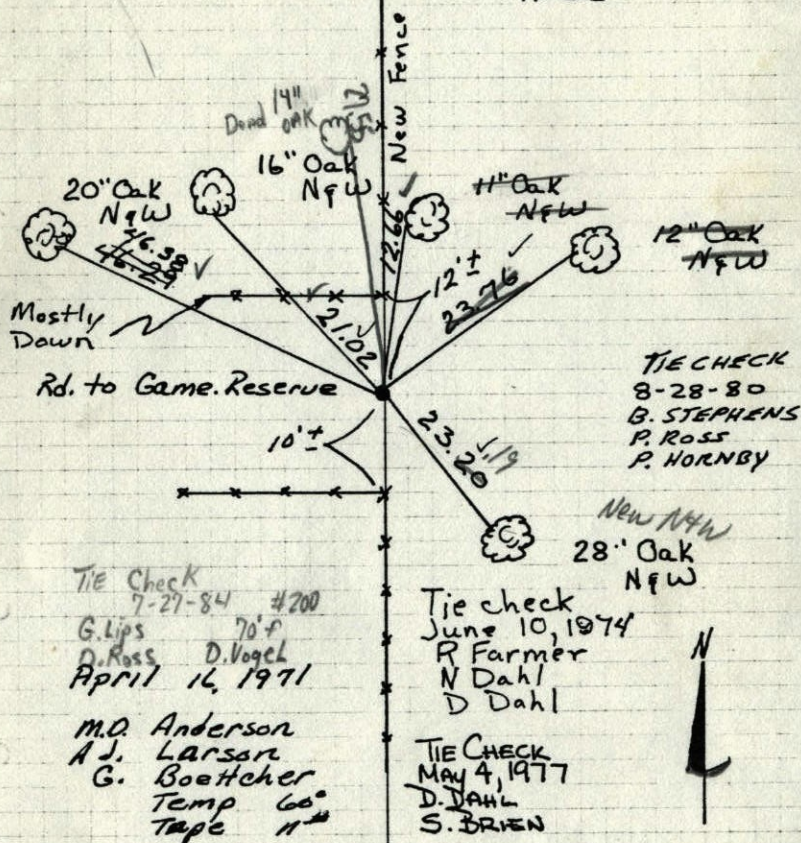
ROLAND W. ANDERSON
 COUNTY SURVEYOR
 ANOKA COUNTY, MINNESOTA

7-27-84

W 20
E 1/4 Cor. Sec. 27-T34-R24

Set Cast Iron Mon. From Area Resurvey
C.I. Mon. down 0.2'

Game Management Area

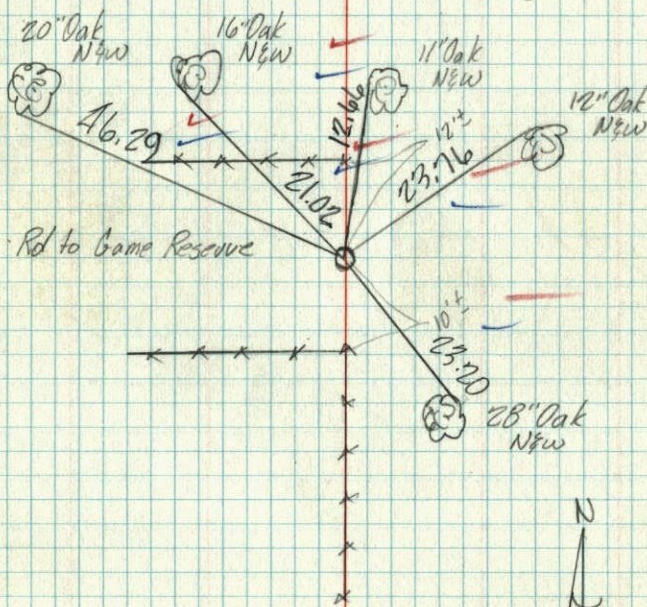


TEMPERATURE CORRECTED AND HORIZONTALLY TAPED MEASUREMENTS
ROLAND W. ANDERSON
COUNTY SURVEYOR
ANOKA COUNTY, MINNESOTA

W 26
E 1/4 Cor. Sec. 29-T34-R24

Set Cast Iron Monument from area resurvey
C.I. Mon down 0.2'

GAME MANAGE. AREA



TEMPERATURE CORRECTED AND HORIZONTALLY TAPED MEASUREMENTS

ROLAND W. ANDERSON
COUNTY SURVEYOR
ANOKA COUNTY, MINNESOTA