

CERTIFICATE OF LOCATION OF GOVERNMENT CORNER

County of Anoka

State of Minnesota

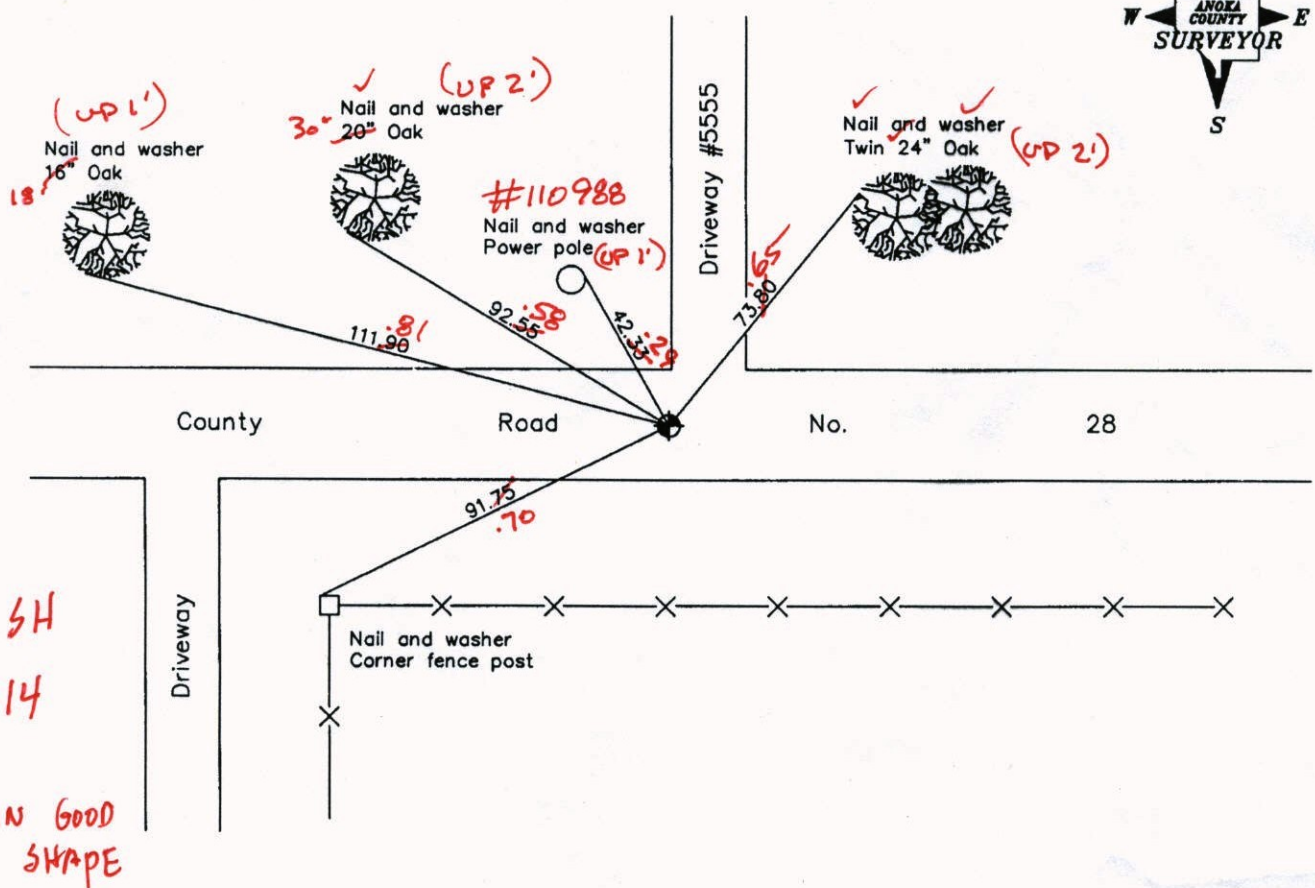
Northeast Corner of Sec. 35 Township 34 Range 25

On the 6th day of October, 1970, the described corner was evidenced by area resurvey

and to perpetuate the location of said corner, at the exact location thereof, a permanent marker was placed consisting of a cast iron monument

AND on the 7th day of May, 2003, said permanent marker was found and the ties were updated

Updated reference ties are as shown below.



JS SH
3-27-14
T/T
MON IN GOOD
SHAPE

VR3
COORD'S

Revised date
7/20/92
7/15/97
5/07/03

N.A.D. 1983 Coordinates (1996 Adjustment)	
County Project Coordinates	
Northing	<u>232766.1423</u>
Easting	<u>463462.0456</u>
Date	<u>5/07/03</u>

I hereby certify that this United States public land survey monument record is correct and complete to the best of my knowledge and belief.

Larry D. Hoium Date 5/07/03

Larry D. Hoium, Anoka County Surveyor

Minnesota License Number 18165

3DR = 0.05

N: 232766.1283
E: 463461.9923

CERTIFICATE OF LOCATION OF GOVERNMENT CORNER

County of Anoka

State of Minnesota

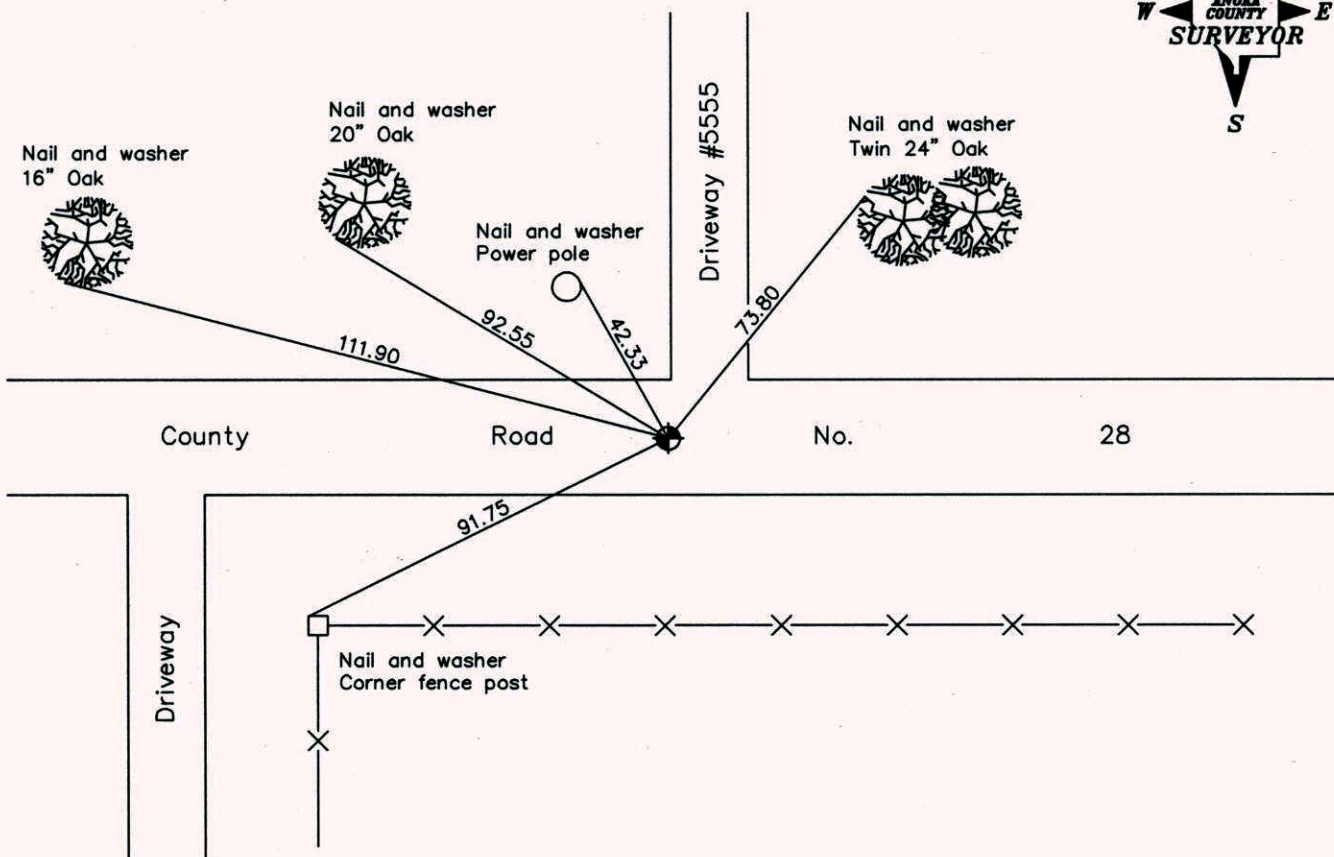
Northeast Corner of Sec. 35 Township 34 Range 25

On the 6th day of October, 1970, the described corner was evidenced by area resurvey

and to perpetuate the location of said corner, at the exact location thereof, a permanent marker was placed consisting of a cast iron monument

AND on the 7th day of May, 2003, said permanent marker was found and the ties were updated

Updated reference ties are as shown below.



Revised date
7/20/92
7/15/97
5/07/03

N.A.D. 1983 Coordinates (1996 Adjustment)	
County Project Coordinates	
Northing	<u>232766.1423</u>
Easting	<u>463462.0456</u>
Date	<u>5/07/03</u>

I hereby certify that this United States public land survey monument record is correct and complete to the best of my knowledge and belief.

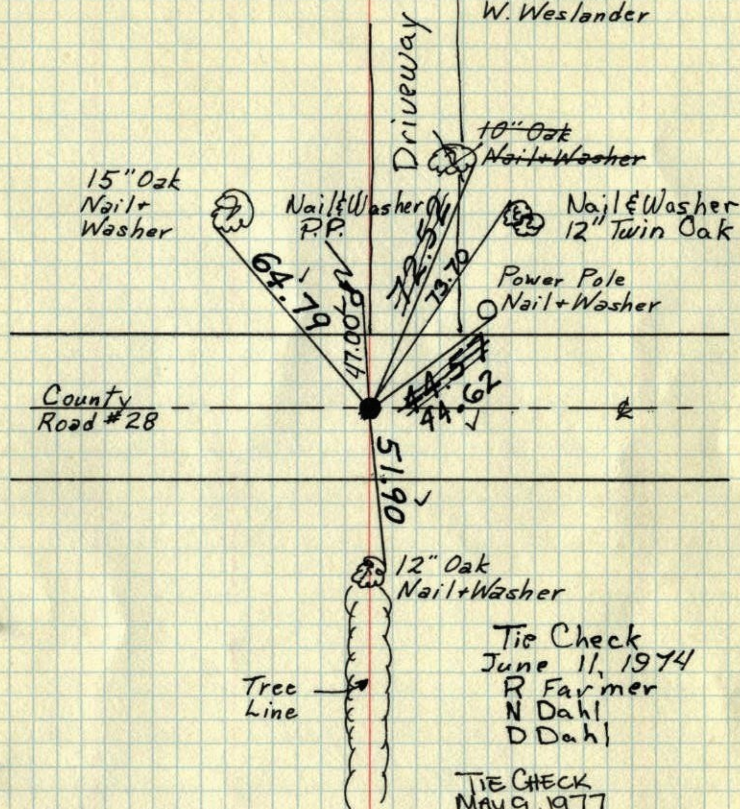
Larry D. Hoium Date 5/07/03

Larry D. Hoium, Anoka County Surveyor

Minnesota License Number 18165

NE Cor. Sec. 35-T34-R25

Set Cast Iron Monument flush from area resurvey.
 Oct. 6, 1970
 M. D. Anderson
 H. J. Larson
 W. Weslander



Tie Check
 7-20-89
 G. Lips
 D. Koss
 O. Vogel

TIE CHECK
 May 9, 1977
 R. JANNERLID
 J. DAHL
 S. BRENN

TIE CHECK
 8-26-80
 D. Naglak
 J. Twaddle
 G. Stoops

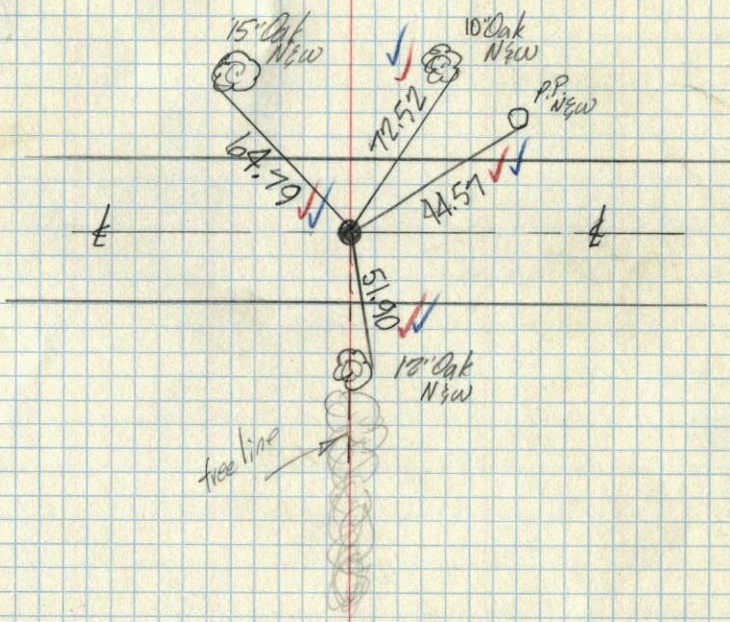
TEMPERATURE CORRECTED AND HORIZONTALLY TAPED MEASUREMENTS

ROLAND W. ANDERSON,
 COUNTY SURVEYOR
 ANOKA COUNTY, MINNESOTA

N.E. Cor. Sec. 35-T34-R25

set C.I. Mon. from area resurvey
 C.I. Mon. flush in Black top

Oct 6, 1970
 M. D. Anderson
 H. J. Larson
 W. Weslander
 temp. 65°
 tape #9 ✓



tree line