

CERTIFICATE OF LOCATION OF GOVERNMENT CORNER

County of Anoka State of Minnesota

South 1/4 Corner of Sec. 27 Township 34 Range 25

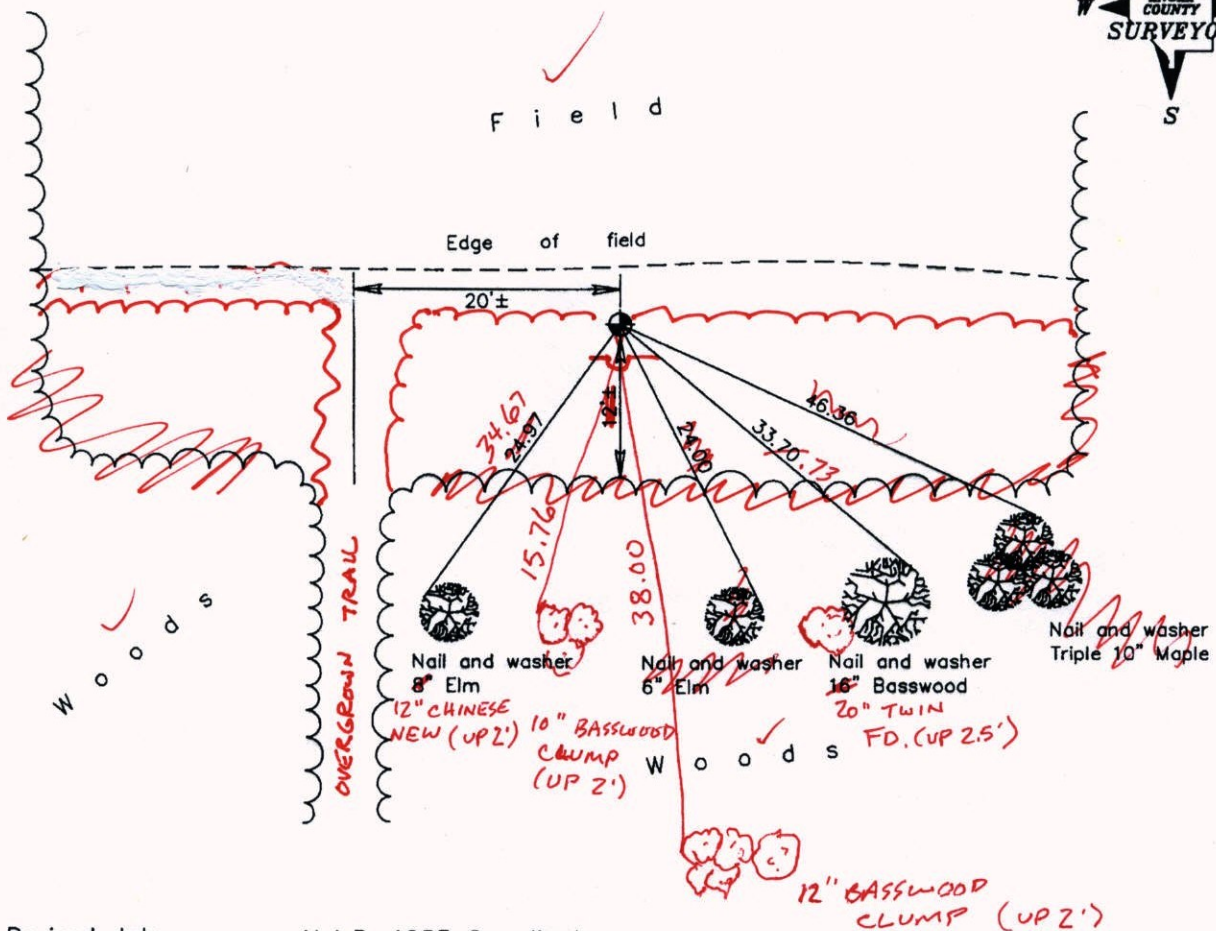
On the 11th day of August, 1976, the described corner was evidenced by area resurvey

and to perpetuate the location of said corner, at the exact location thereof, a permanent marker was placed consisting of a cast iron monument (MON. DOWN 1'±) * ~~COULD USE STGN. POST~~

7-31-14 ADDED SIGN & POST ON S. SIDE OF MON. FACING N.
BK-SS

AND on the 9th day of May, 2003, said permanent marker was found and the ties were updated

Updated reference ties are as shown below.



4-14-14
BK-SS
TAPED

Revised date	7/27/92
	7/23/97
	5/09/03

N.A.D. 1983 Coordinates (1996 Adjustment)	
County Project Coordinates	
Northing	<u>232812.8350</u>
Easting	<u>455512.0180</u>
Date	<u>5/13/03</u>

I hereby certify that this United States public land survey monument record is correct and complete to the best of my knowledge and belief.

Larry D. Hoium Date 5/09/03
Larry D. Hoium, Anoka County Surveyor
Minnesota License Number 18165

VRS 3DQ = 0.10 N = 232812.7613 E = 455511.9659

CERTIFICATE OF LOCATION OF GOVERNMENT CORNER

County of Anoka

State of Minnesota

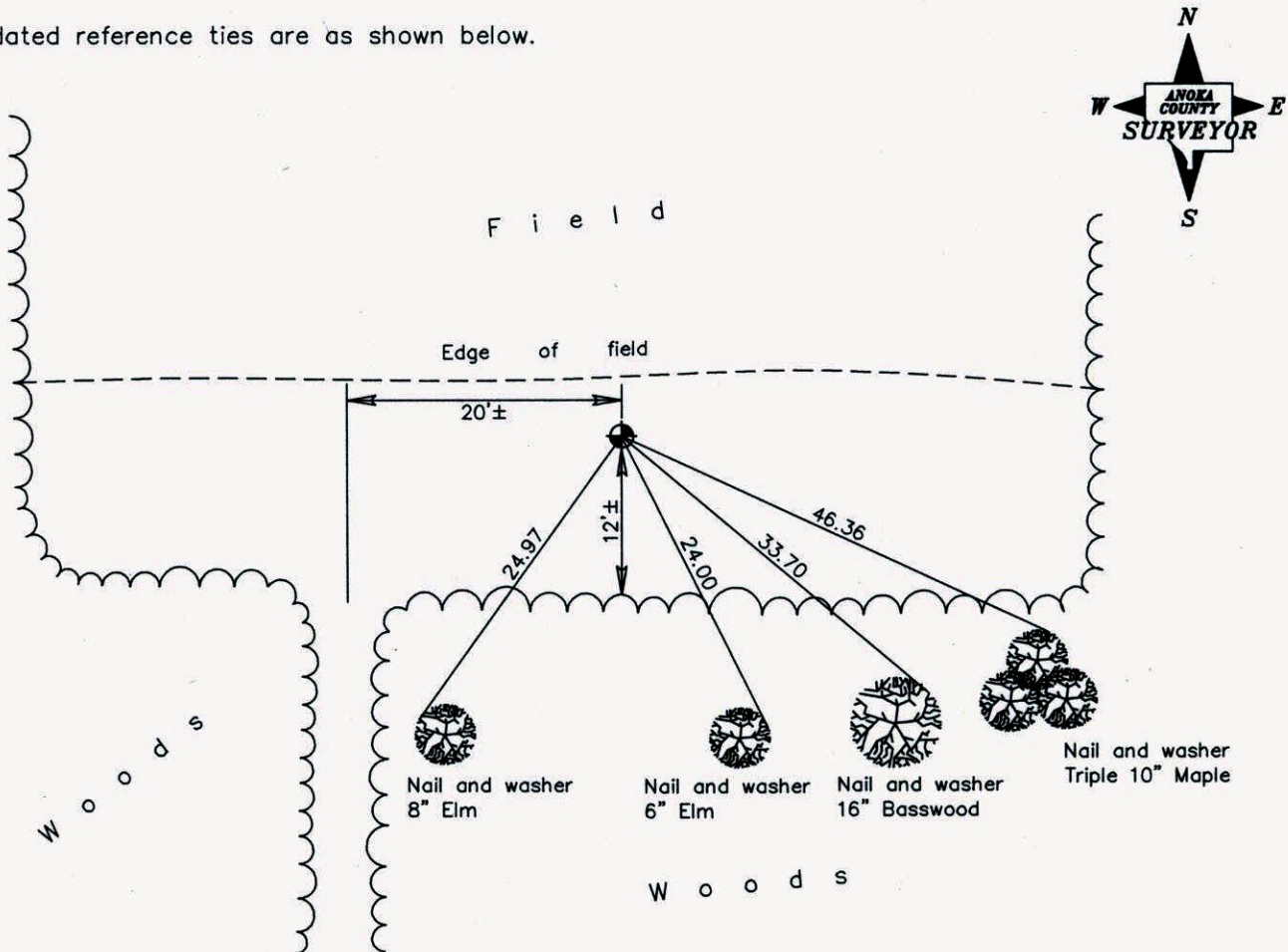
South 1/4 Corner of Sec. 27 Township 34 Range 25

On the 11th day of August, 1976, the described corner was evidenced by area resurvey

and to perpetuate the location of said corner, at the exact location thereof, a permanent marker was placed consisting of a cast iron monument

AND on the 9th day of May, 2003, said permanent marker was found and the ties were updated

Updated reference ties are as shown below.



Revised date
7/27/92
7/23/97
5/09/03

N.A.D. 1983 Coordinates (1996 Adjustment)	
County Project Coordinates	
Northing	<u>232812.8350</u>
Easting	<u>455512.0180</u>
Date	<u>5/13/03</u>

I hereby certify that this United States public land survey monument record is correct and complete to the best of my knowledge and belief.

Larry D. Hoium Date 5/09/03

Larry D. Hoium, Anoka County Surveyor

Minnesota License Number 18165

CERTIFICATE OF LOCATION OF GOVERNMENT CORNER

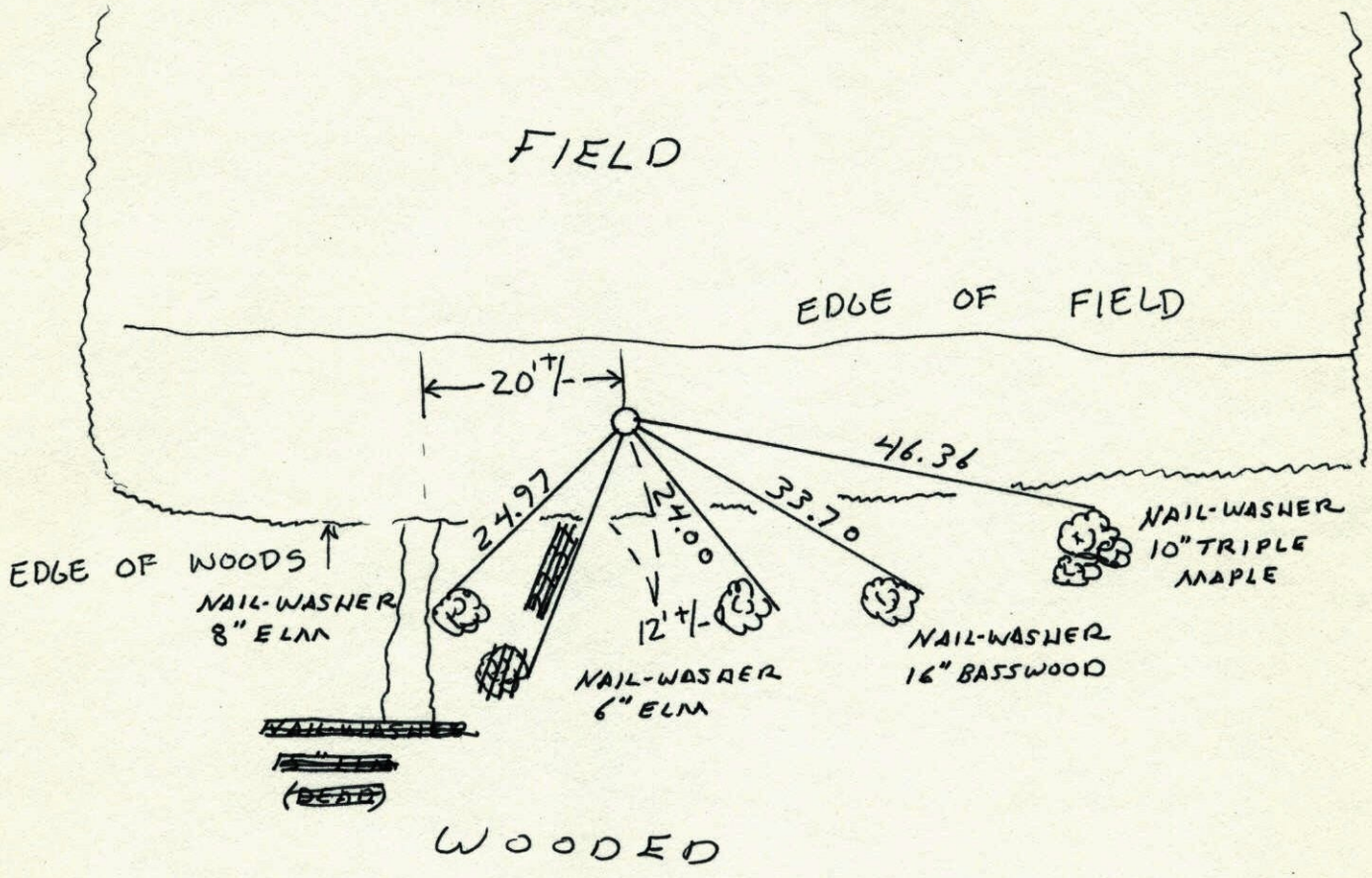
County of Anoka State of Minnesota

SOUTH 1/4 Corner of Sec. 27 Township 34 Range 25

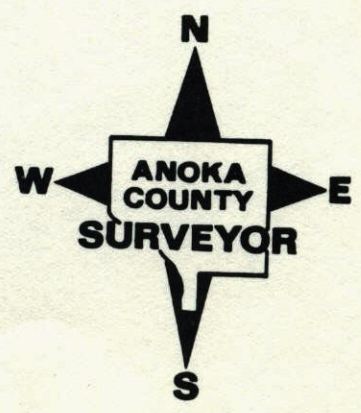
I hereby certify that on the 11th day of AUG., 1976, I found the described corner which was evidenced by AREA RESURVEY

and I further certify that to perpetuate the location of said corner, I did, at the exact location thereof, place a permanent marker consisting of CAST IRON MONUMENT

which reference or witness monuments are located in the manner following:

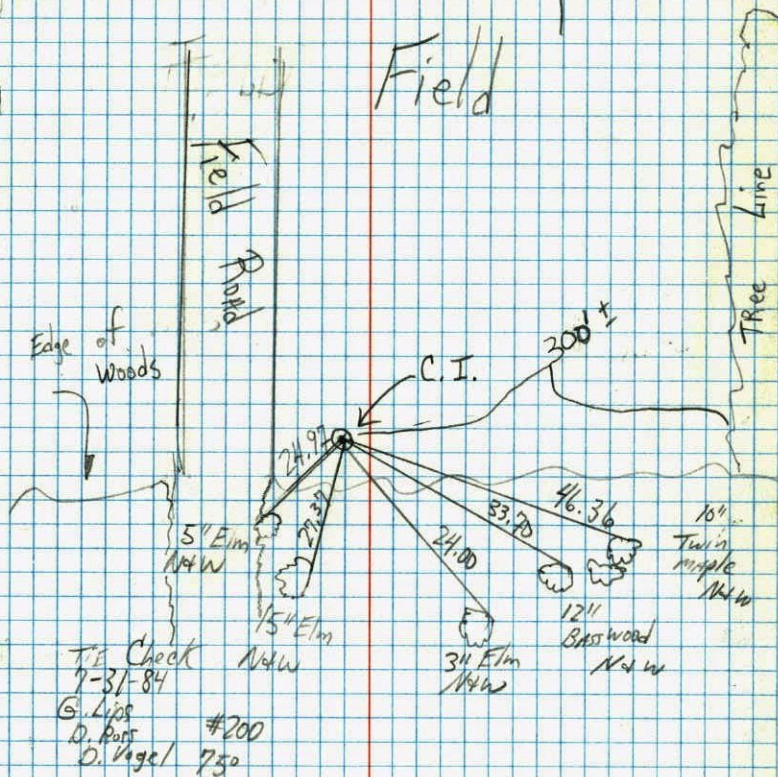


Revised date	Revised date	Revised date
6-24-87		
7-27-92		
7-23-97		
5-9-03		



70
S 1/4 Corner Sec. 27 T. 34 R. 25

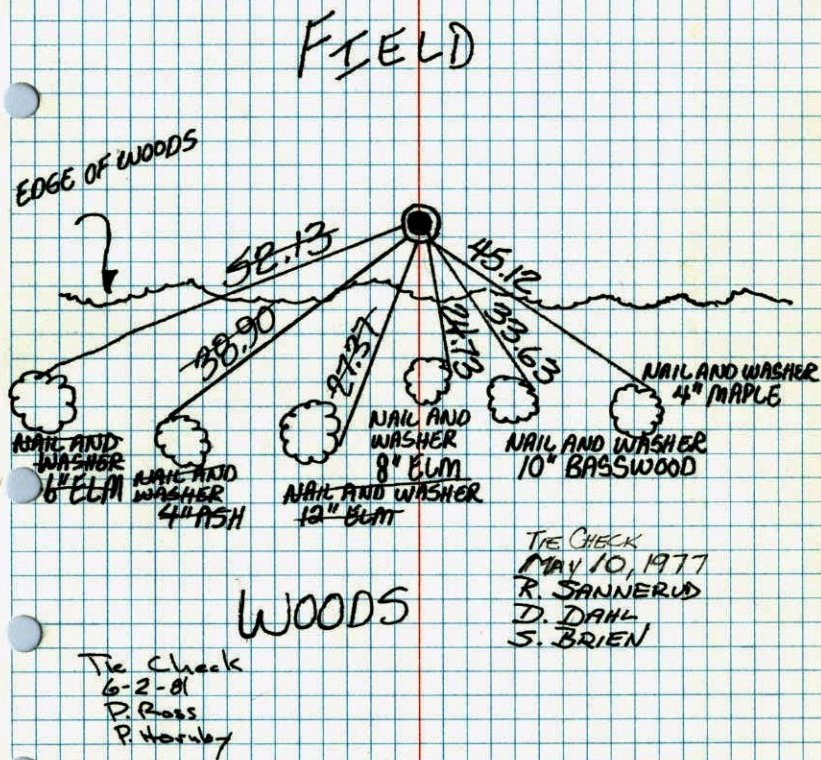
Cast Iron Monument
Down 1.0' ±



70
S 1/4 CORNER SEC. 27 T. 34 R. 25

GET CAST IRON MONUMENT FROM AREA
RE-SURVEY. CAST IRON MON. DOWN 1' ±.

8-11-76
H. CARSON
B. GUETZKO
J. BOETTCHER



TEMPERATURE CORRECTED
AND HORIZONTALLY
TAPED MEASUREMENTS

ROLAND W. ANDERSON
COUNTY SURVEYOR
ANOKA COUNTY, MINNESOTA

S 1/4 Cor. Sec. 27 T34 R24

Set PK spk. from area survey

1-7-71

Wg -5°

H. Larson
W. Westlander

