

CERTIFICATE OF LOCATION OF GOVERNMENT CORNER

County of Anoka

State of Minnesota

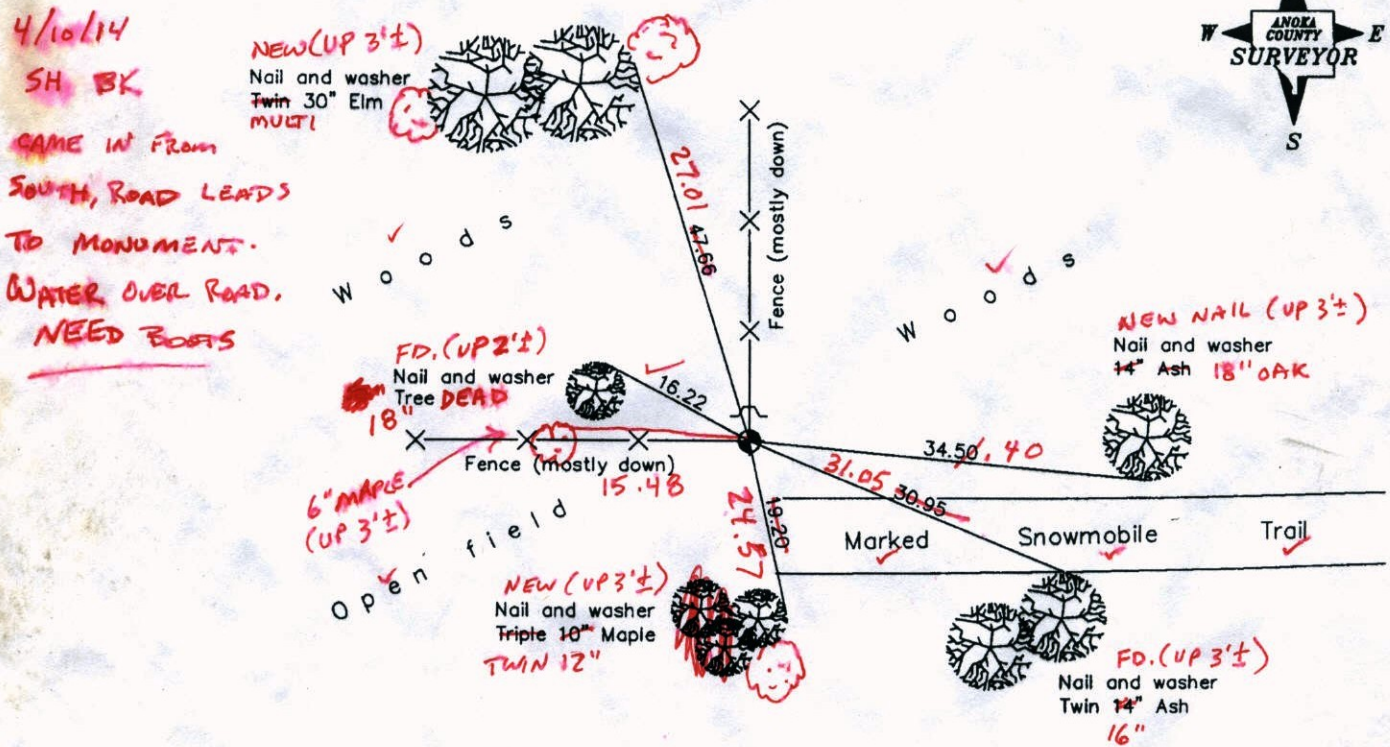
West 1/4 Corner of Sec. 35 Township 34 Range 25

On the 13th day of October, 1970, the described corner was evidenced by area resurvey

and to perpetuate the location of said corner, at the exact location thereof, a permanent marker was placed consisting of a cast iron monument with a post on the north side

AND on the 8th day of May, 2003, said permanent marker was found and the ties were updated

Updated reference ties are as shown below.



4-17-14
BK-SS
TAPED

GARY ZIMMERMAN
~~612-812-2698~~

Revised date
6/22/87
7/29/92
5/08/03

N.A.D. 1983 Coordinates (1996 Adjustment)	
County Project Coordinates	
Northing	<u>230163.3330</u>
Easting	<u>458157.3488</u>
Date	<u>5/08/03</u>

I hereby certify that this United States public land survey monument record is correct and complete to the best of my knowledge and belief.

Gary D. Hoium Date 5/08/03
 Gary D. Hoium, Anoka County Surveyor
 Minnesota License Number 18165

CERTIFICATE OF LOCATION OF GOVERNMENT CORNER

County of Anoka

State of Minnesota

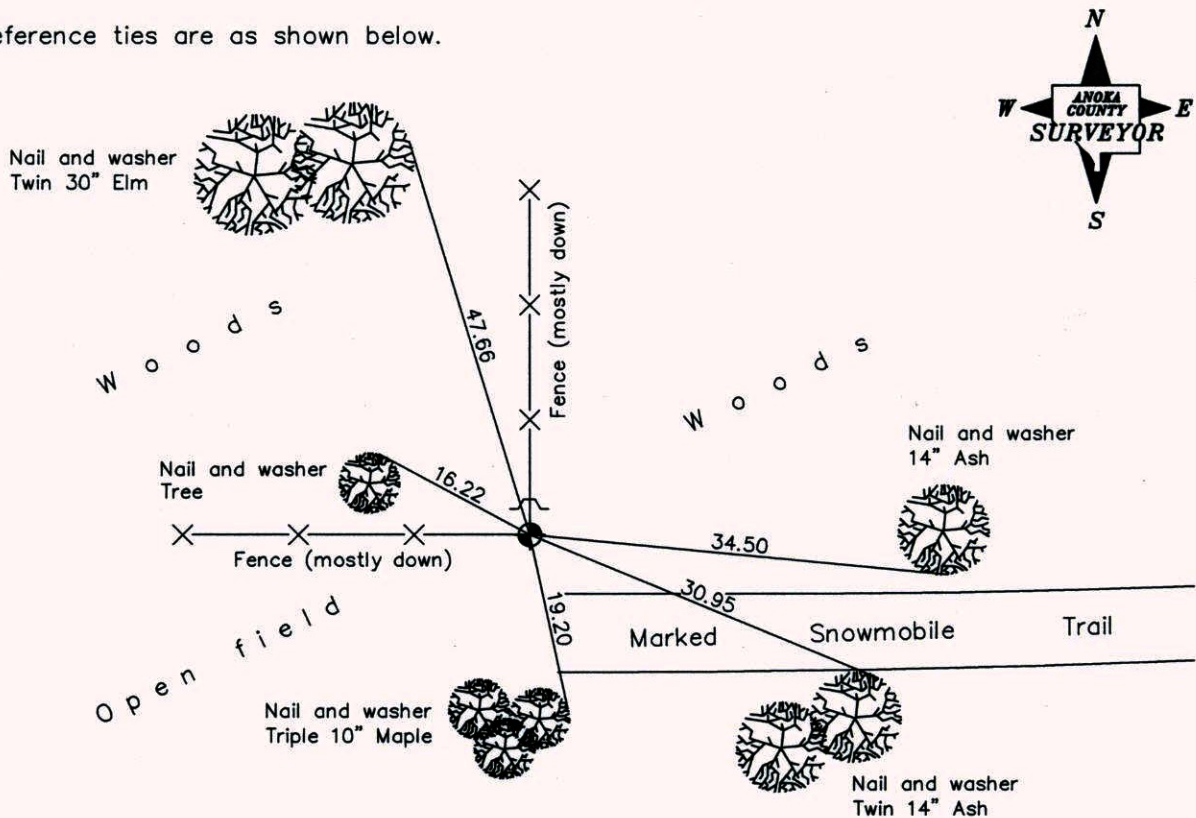
West 1/4 Corner of Sec. 35 Township 34 Range 25

On the 13th day of October, 1970, the described corner was evidenced by area resurvey

and to perpetuate the location of said corner, at the exact location thereof, a permanent marker was placed consisting of a cast iron monument with a post on the north side

AND on the 8th day of May, 2003, said permanent marker was found and the ties were updated

Updated reference ties are as shown below.



Revised date

6/22/87
7/29/92
5/08/03

N.A.D. 1983 Coordinates
(1996 Adjustment)

County Project Coordinates	
Northing	<u>230163.3330</u>
Easting	<u>458157.3488</u>
Date	<u>5/08/03</u>

I hereby certify that this United States public land survey monument record is correct and complete to the best of my knowledge and belief.

Larry D. Hoium Date 5/08/03
 _____, Anoka County Surveyor
 Minnesota License Number 18165

