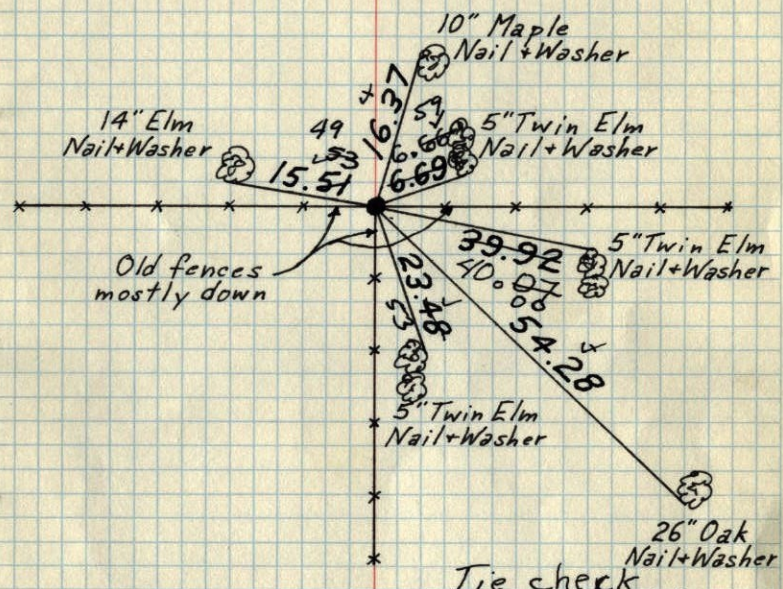


# SE Cor. Sec. 33 - T34 - R25

Set Cast Iron Monument from area resurvey.

Monument flush at fence corner.

October 14, 1968  
M. D. Anderson  
H. J. Larson  
R. A. Olson



Tie check  
June 12, 1974  
R Farmer  
N Dahl  
D Dahl

Tie check  
5-29-81  
P. Ross  
P. Hornby

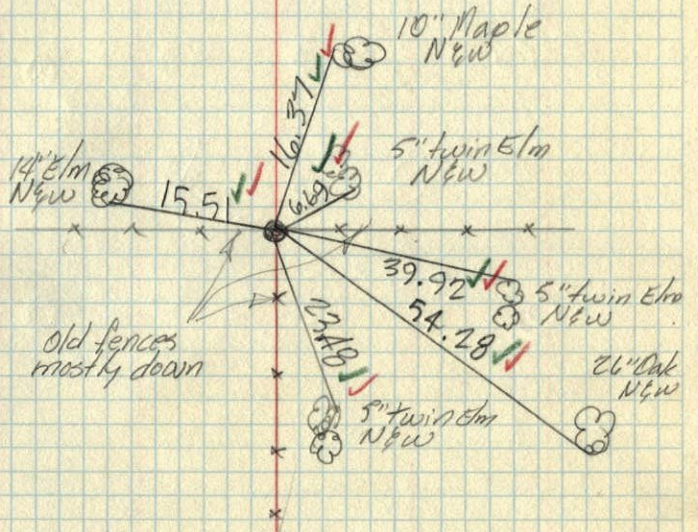
TIE CHECK  
MAY 11, 1977  
R. SANNERUD  
D. DAHL  
S. BRIEN

TEMPERATURE CORRECTED AND HORIZONTALLY TAPED MEASUREMENTS  
ROLAND W. ANDERSON  
COUNTY SURVEYOR  
ANOKA COUNTY, MINNESOTA

# S.E. Cor. Sec. 33 - T34 - R25

Set C.I. Mon. from area resurvey  
C.I. Mon. flush at fence cor.

Oct. 14, 1968  
M.D. Anderson  
H.J. Larson  
R.A. Olson  
temp. 70° ✓  
tape #5 ✓



old fences mostly down