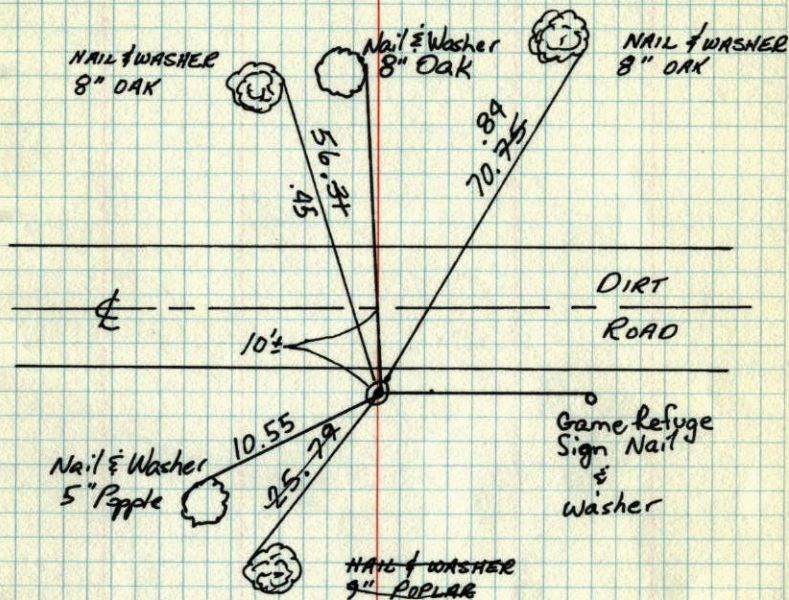


S.E. COR. SEC. 32-T34-R25

SET CAST IRON MONUMENT FROM AREA RESURVEY.

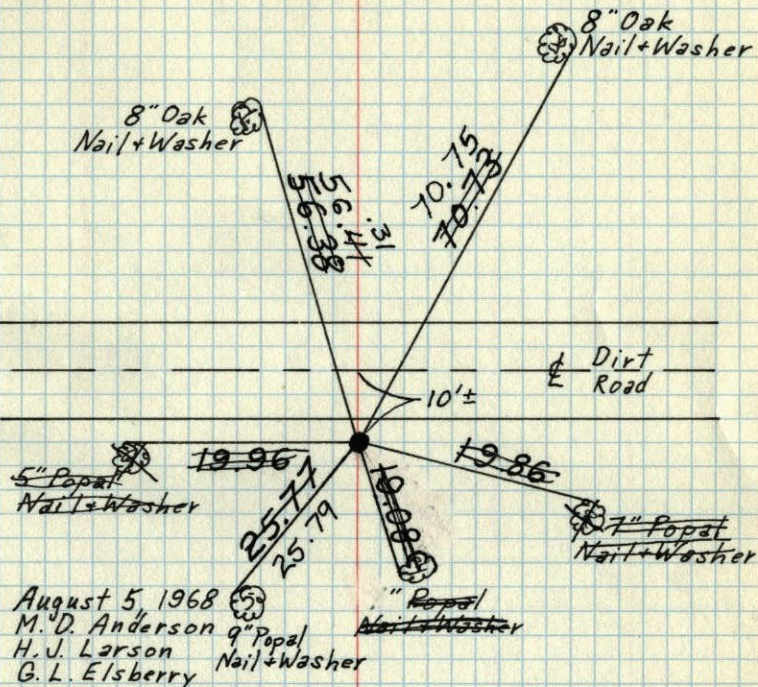
MONUMENT DOWN 0.4'±

5 AUG 68
M. D. ANDERSON
H. LARSON
G. ELSBERRYTIE CHECK
16 JUL 70
D. POWELL
R. BRIENTie Check
7-31-89
G. Lips
D. Ross
P. VogelTIE CHECK
12 JUN 74
FARMER
DAHLTie Check
5-27-81
P. Ross
P. HornbyTIE CHECK
12 MAY 77
R. SANNERUD
D. DAHLTEMPERATURE CORRECTED
AND HORIZONTALLY
TAPED MEASUREMENTS
ROLAND W. ANDERSON
COUNTY SURVEYOR
ANOKA COUNTY, MINNESOTA

SE Cor. Sec. 32-T34-R25

Set Cast Iron Monument from area resurvey.

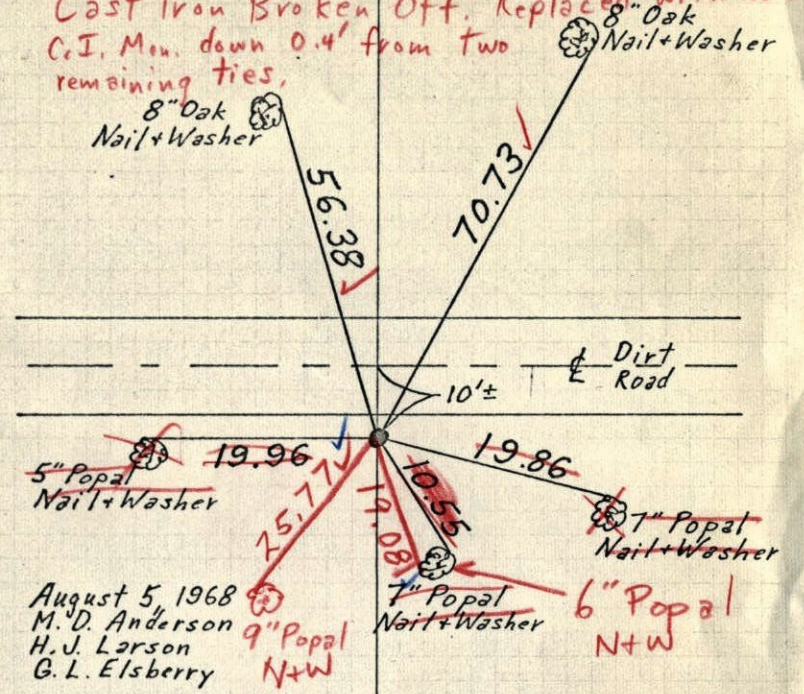
Monument down 0.4'±.

August 5 1968
M. D. Anderson
H. J. Larson
G. L. ElsberryReset broken off Cast Iron Monument down 0.4'± from
two remaining ties to the North. July 16, 1970
D. Powell
R. BrienTie Check
June 12 1974
R. Farmer
N. Dahl
D. DahlTIE CHECK
MAY 12, 1977
R. SANNERUD
D. DAHLTEMPERATURE CORRECTED
AND HORIZONTALLY
TAPED MEASUREMENTS
ROLAND W. ANDERSON
COUNTY SURVEYOR
ANOKA COUNTY, MINNESOTA

~~X~~ SE Cor. Sec. 32-T34-R25

Set Cast Iron Monument from area resurvey.
Monument down 0.4'±.

Cast Iron Broken Off. Replaced with new
C.I. Mon. down 0.4' from two
remaining ties.



August 5, 1968
M.D. Anderson
H.J. Larson
G.L. Elsberry

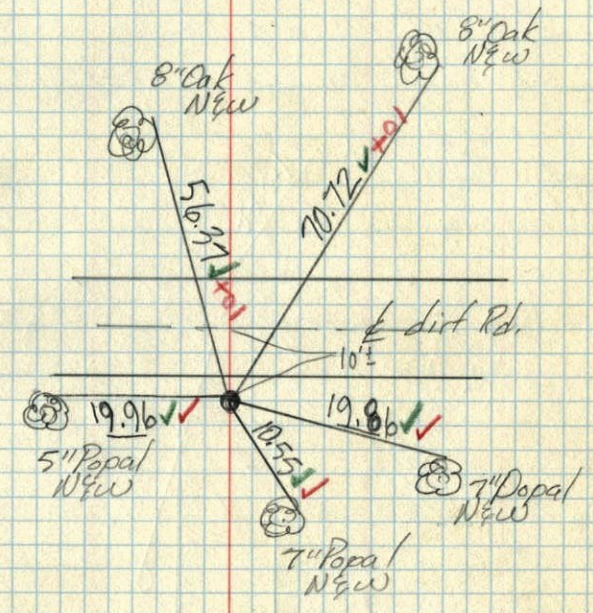
7/16/70
#10-88°
D. Powell
R. Brien

TEMPERATURE CORRECTED
AND HORIZONTALLY
TAPED MEASUREMENTS

ROLAND W. ANDERSON
COUNTY SURVEYOR
ANOKA COUNTY, MINNESOTA

SE. Cor. Sec. 32-T34-R25

Set C.I. Mon. down 0.4'±
Set from area resurvey



Aug. 5, 1968
M.D. Anderson
H.J. Larson
G.L. Elsberry
temp 85°
tape # 5