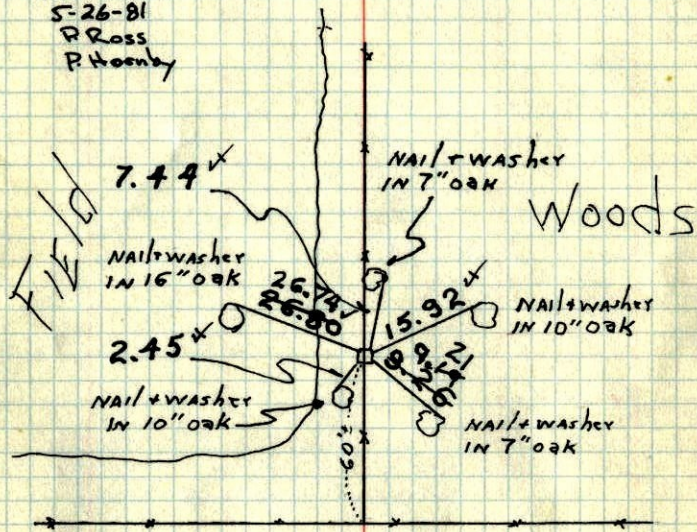


44
5/4 Cor. Sec. 31 T34 R24

Found granite monit. used by
Dann Pepper. up .4'

Tie Check
5-26-81
R Ross
P Hooley



TIE CHECK
MAY 5, 1977
D. DAHL
S. BRIEN

Woods
Tie Check
June 18, 1974
R Farmer
W Dahl
D Dahl

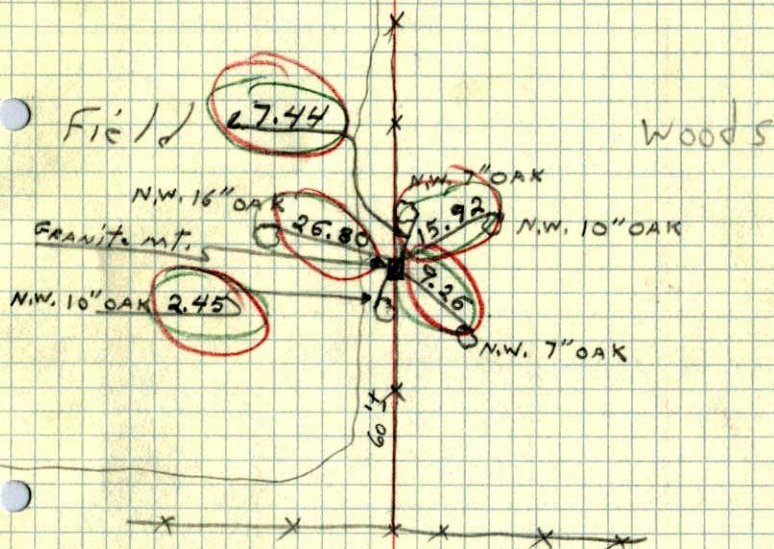
Sept. 2 1965
73° ± 5
H. Larson
J. Dunlop

Tie Check
June 20, 1968
D. Powell
P. Pieh
R. Olson

TEMPERATURE CORRECTED
AND HORIZONTALLY
TAPED MEASUREMENTS

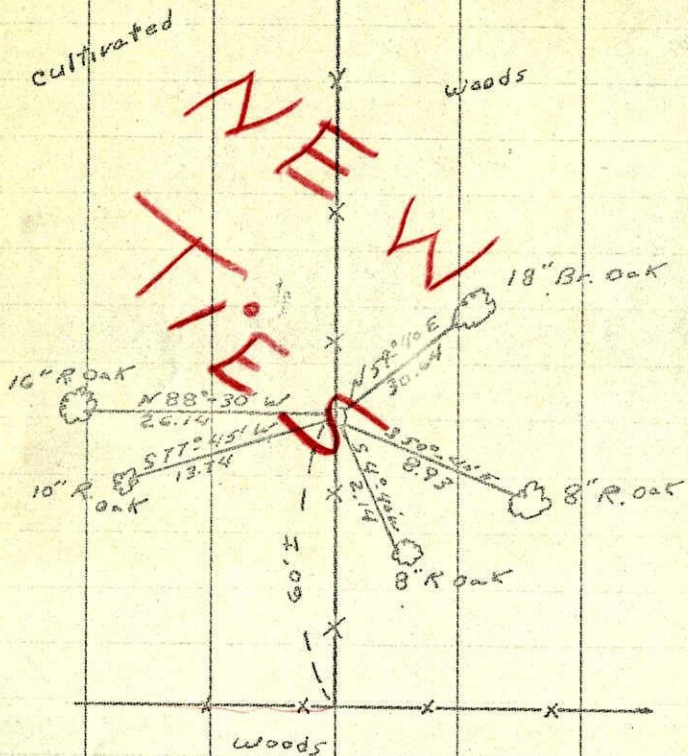
ROLAND W. ANDERSON
COUNTY SURVEYOR
ANOKA COUNTY, MINNESOTA

5/4 COR. Sect 31 T34 R24
Found GRANITE MT. used by
DANN PEPPER up .4'



Sept 2 1965
Tape (5) 73°
H. Larson
J. Dunlop

10
 S $\frac{1}{4}$ Cor. Sec. 31, T34, R24
 Found Granite Mon. up. 40
 9-25-63 JO-MK



By Pann Pepper
 9-30-63

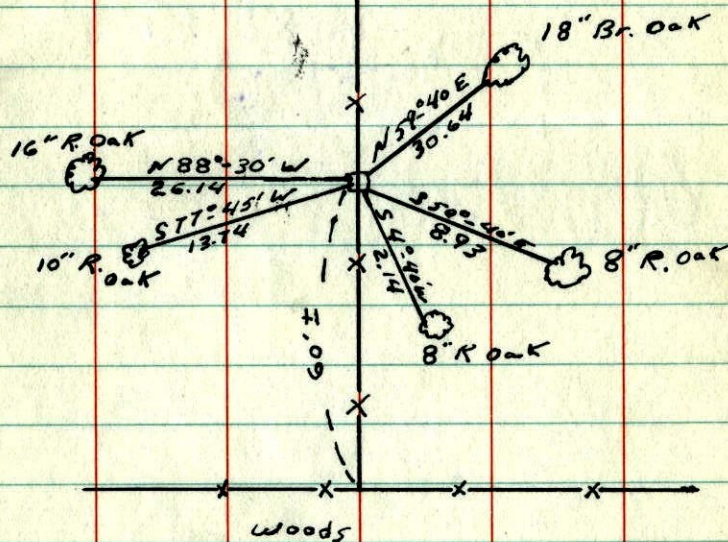
RC

10
 S $\frac{1}{4}$ Cor. Sec. 31, T34, R24
 Found Granite Mon. up. 40

9-25-63 JO-MK

cultivated

Woods



By Pann Pepper
 9-30-63

15.4" cor. sec. 31 + 34 R 24

Jan 21, 1910

(St. Francis)

12" B.O.



N 10 1/2° W
10 1/2' 1/2"



stone

9" B.O.



N 13° 30' E
19 1/2' 1/2"