

RE-SET

CONSTRUCTION TIE FOR S¹/₄ CORNER SECTION 34 T34R24

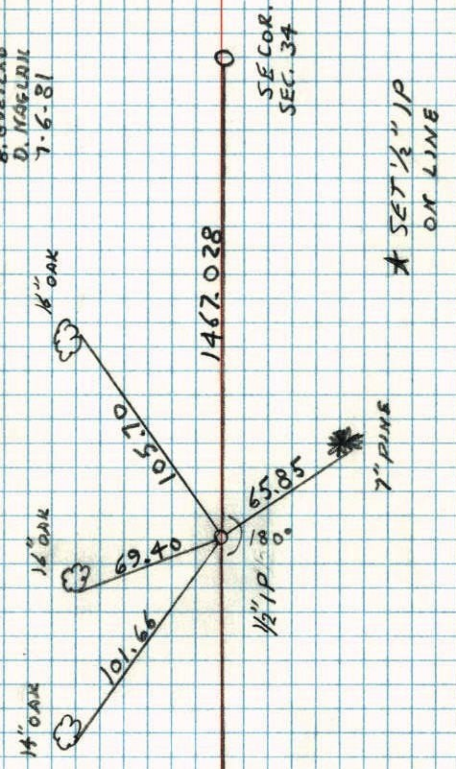
W. TELDYNE NO. 448

H. LARSON
B. GUETZKO
D. MEHLRIK
7-6-81

TO N¹/₄ COR.
SEC. 34
5267.091

1159.504

S¹/₄ COR.
SEC. 34



* SET 1/2" IP
ON LINE