

CERTIFICATE OF LOCATION OF GOVERNMENT CORNER

County of Anoka

State of Minnesota

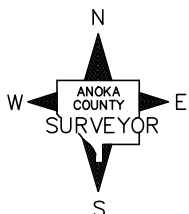
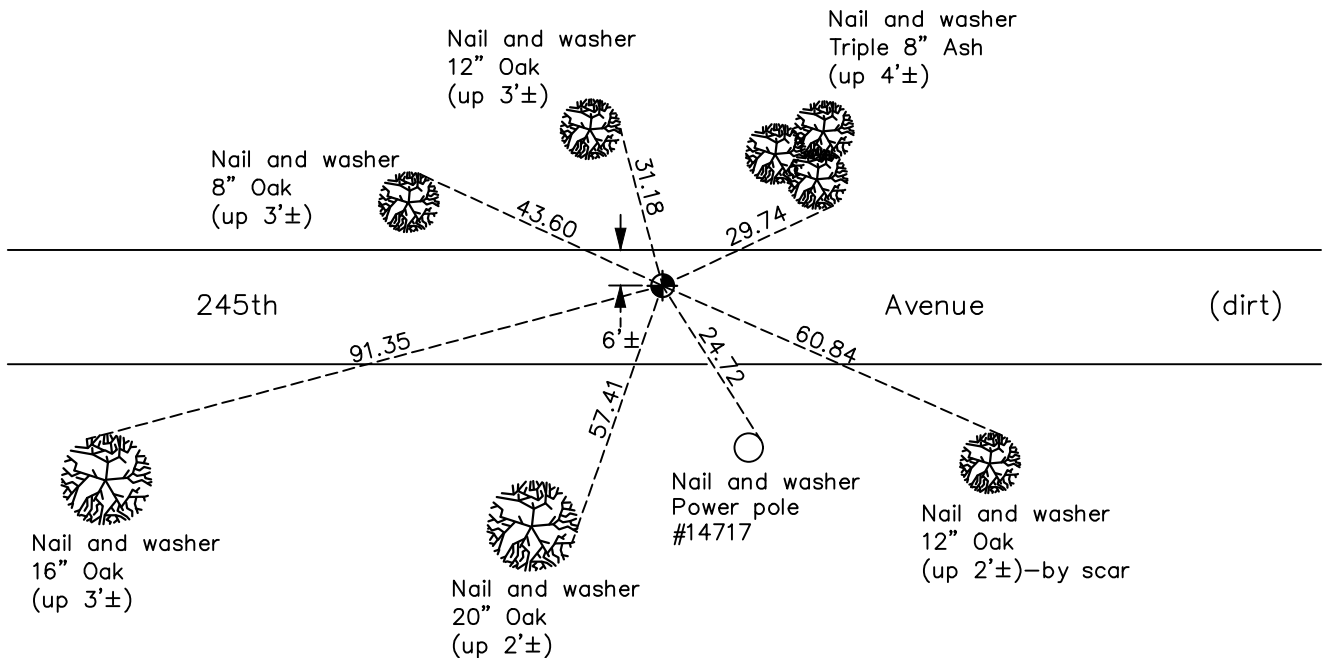
North 1/4 Corner of Sec. 25 Township 34 Range 24

On the 22nd day of August, 1974, the described corner was evidenced by area resurvey

and to perpetuate the location of said corner, at the exact location thereof, a permanent marker was placed consisting of a cast iron monument down 0.5'±

AND on the 28th day of October, 2022, said permanent marker was found down 0.5'± and the ties were updated

Updated reference ties are as shown below.



Revision Date

1/17/2023

N.A.D. 1983 Coordinates
(1996 Adjustment)

County Project Coordinates
Northing <u>237979.8268</u>
Easting <u>497727.5847</u>
Date <u>4/29/03</u>

I hereby certify that this United States public land survey monument record is correct and complete to the best of my knowledge and belief.

David Zieglmeier Date 1/18/23

David M. Zieglmeier, Anoka County Deputy Surveyor
Minnesota License Number 46179

HISTORY OF GOVERNMENT CORNER

Page No. 2

County of Anoka

State of Minnesota

North 1/4 Corner of Sec. 25 Township 34 Range 24

CORNER HISTORY:

August 22, 1974 - Set cast iron monument down 0.5'± using area resurvey. Established ties to monument.

May 3, 1977 - Found cast iron monument and updated ties.

September 13, 1978 - Found cast iron monument and lowered. Updated ties.

August 28, 1980 - Found cast iron monument and updated ties.

July 25, 1984 - Found cast iron monument and lowered. Updated ties.

June 15, 1987 - Found cast iron monument and updated ties.

July 23, 1992 - Found cast iron monument broken and replaced with a new cast iron monument. Updated ties.

July 31, 1997 - Found cast iron monument and updated ties.

April 29, 2003 - Established NAD 1983 (1996 adj.) Anoka County project coordinates by static GPS methods.

March 11, 2014 - Found cast iron monument down 1'±. Verified position by VRS GPS methods. Updated ties.

July 13, 2020 - Found cast iron monument down 1'±. Verified position by VRS GPS methods. Updated ties.

October 28, 2022 - Found cast iron monument down 0.5'±, verified position by VRS GPS method, updated ties.