

CERTIFICATE OF LOCATION OF GOVERNMENT CORNER

County of Anoka

State of Minnesota

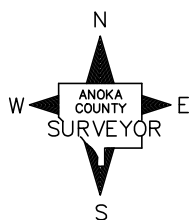
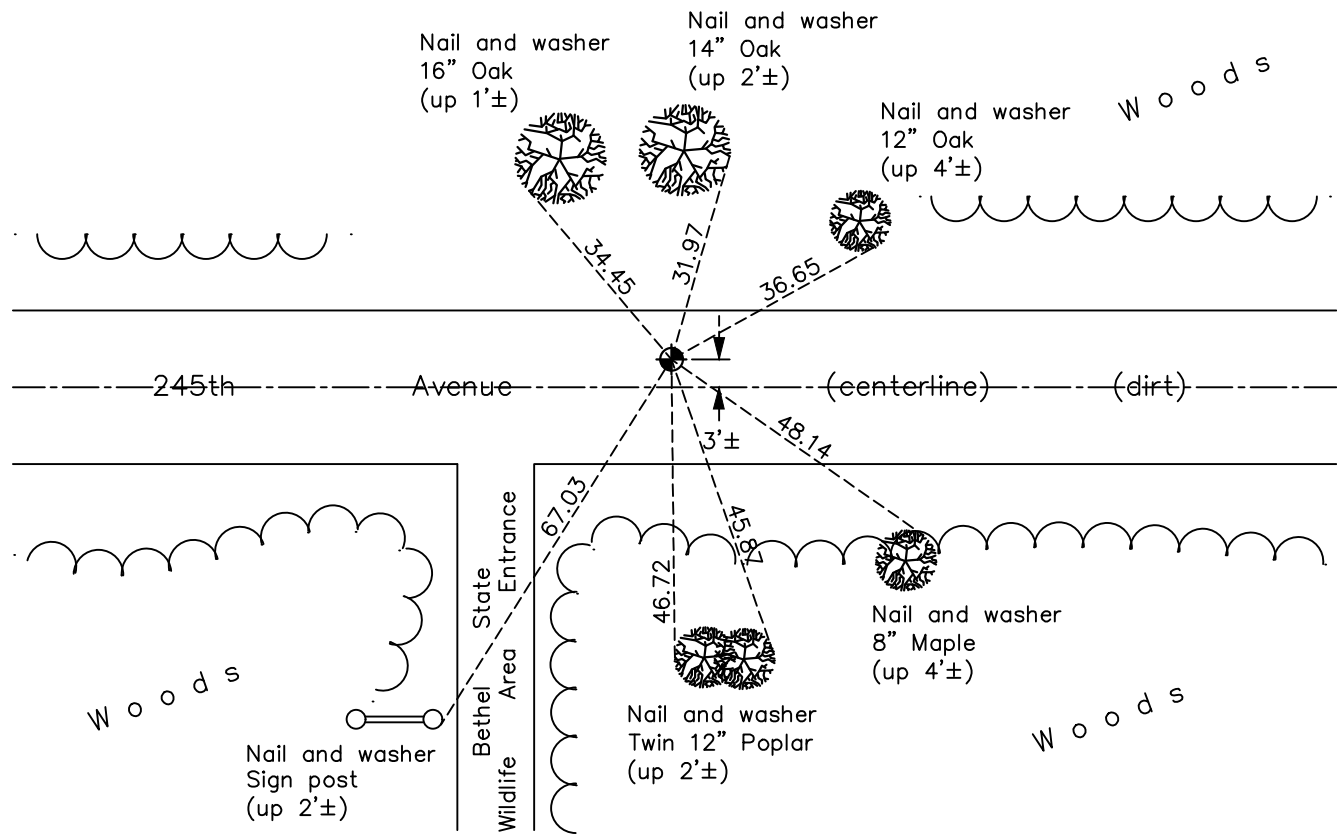
Northeast Corner of Sec. 26 Township 34 Range 24

On the 2nd day of September, 1971, the described corner was evidenced by area resurvey

and to perpetuate the location of said corner, at the exact location thereof, a permanent marker was placed consisting of a cast iron monument

AND on the 20th day of January, 2023, said permanent marker was found CIM leaning and broken. Removed and reset with new CIM set down 0.5'±. Ties were updated after replacement.

Updated reference ties are as shown below.



Revision Date

1/24/2023

N.A.D. 1983 Coordinates
(1996 Adjustment)

County Project Coordinates	
Northing	<u>237984.3574</u>
Easting	<u>495127.0575</u>
Date	<u>4/24/03</u>

I hereby certify that this United States public land survey monument record is correct and complete to the best of my knowledge and belief.

David Zieglsmeier Date 2/22/23

David M. Zieglsmeier, Anoka County Surveyor
Minnesota License Number 46179

HISTORY OF GOVERNMENT CORNER

Page No. 3

County of Anoka

State of Minnesota

Northeast Corner of Sec. 26 Township 34 Range 24

CORNER HISTORY:

September 2, 1971 - Set cast iron monument down 0.5'± using area resurvey. Established ties to monument.

August 1, 1974 - Found cast iron monument and updated ties.

May 3, 1977 - Found cast iron monument and updated ties.

September 13, 1978 - Found cast iron monument and lowered. Updated ties.

August 28, 1980 - Found cast iron monument and updated ties.

July 24, 1984 - Found cast iron monument broken and replaced with a new cast iron monument. Updated ties.

July 21, 1992 - Found cast iron monument and updated ties.

July 14, 1997 - Found cast iron monument and updated ties.

April 24, 2003 - Established NAD 1983 (1996 adj.) Anoka County project coordinates by static GPS methods.

May 17, 2006 - Found cast iron monument and updated ties.

April 3, 2014 - Found cast iron monument with top broken off. Checked ties to center pin.

August 12, 2014 - Set a solid cast iron monument down 0.5'± using static GPS methods. Updated ties.

July 10, 2020 - Found cast iron monument down 0.5'± and updated ties.

November 8, 2022 - Found cast iron monument down 0.5'± and possibly broken, verified position using VRS GPS method and the ties were updated.

January 20, 2023 - Removed and reset leaning/ broken cast iron monument with new CIM, set down 0.5'± using historical ties. Verified position by County RTK GPS method and updated ties after replacement.