

# CERTIFICATE OF LOCATION OF GOVERNMENT CORNER

County of Anoka

State of Minnesota

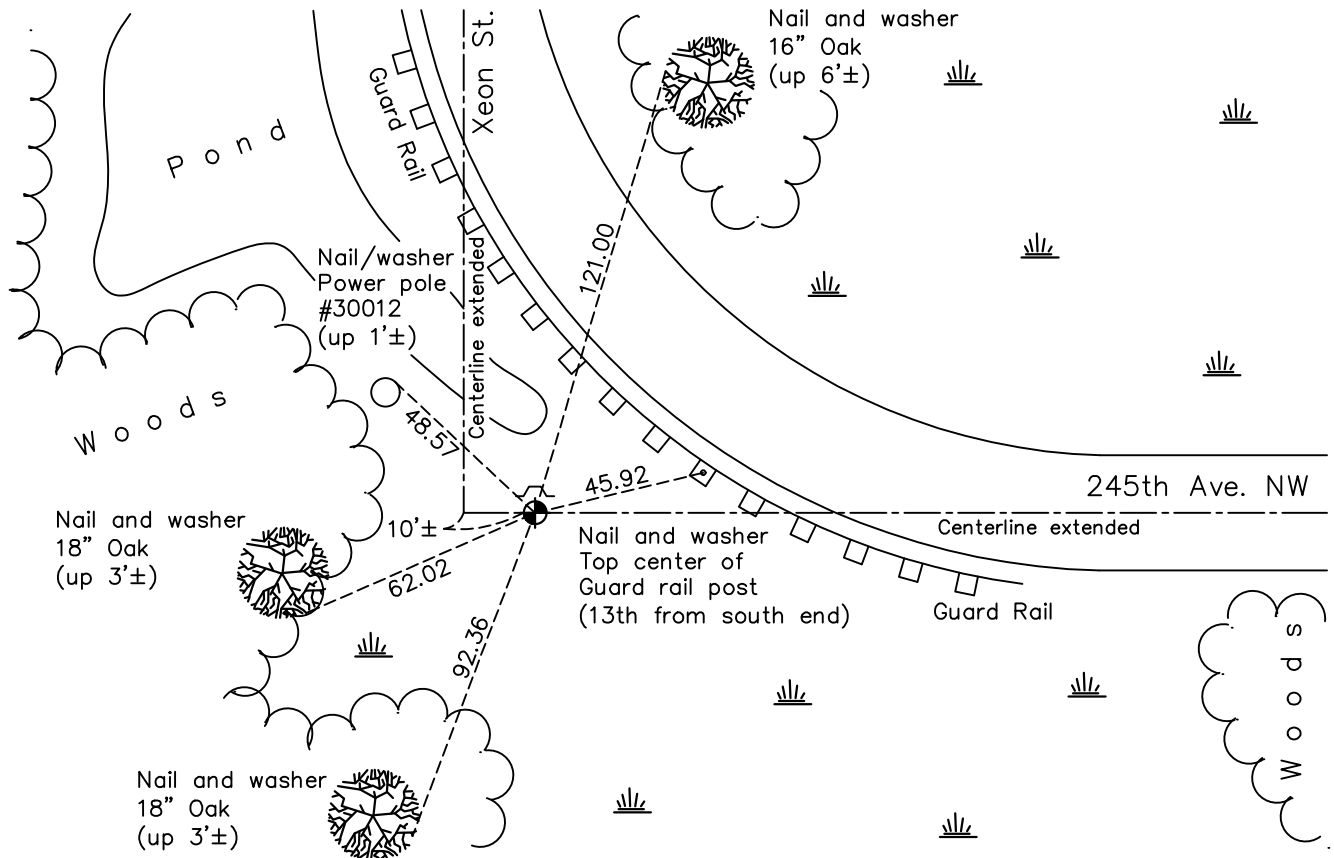
## North 1/4 Corner of Sec. 26 Township 34 Range 24

On the 3rd day of September, 1971, the described corner was evidenced by area resurvey

and to perpetuate the location of said corner, at the exact location thereof, a permanent marker was placed consisting of a cast iron monument

AND on the 8th day of November, 2022, said permanent marker was found up 0.1'± with a sign and post on the North side. The ties were updated.

Updated reference ties are as shown below.



Revision Date

1/23/2023

N.A.D. 1983 Coordinates  
(1996 Adjustment)

County Project Coordinates	
Northing	<u>237987.8919</u>
Easting	<u>492466.6214</u>
Date	<u>4/24/03</u>

I hereby certify that this United States public land survey monument record is correct and complete to the best of my knowledge and belief.

*David Zieglsmeier* Date 2/22/23

David M. Zieglsmeier, Anoka County Surveyor  
Minnesota License Number 46179

# HISTORY OF GOVERNMENT CORNER

Page No. 4

County of Anoka

State of Minnesota

## North 1/4 Corner of Sec. 26 Township 34 Range 24

### **CORNER HISTORY:**

September 3, 1971 - Set cast iron monument flush using area resurvey. Established ties to monument. Set sign and post 0.5'± north of monument.

June, 17, 1974 - Found cast iron monument and updated ties.

May 3, 1977 - Found cast iron monument and updated ties.

August 28, 1980 - Found cast iron monument and updated ties.

July 24, 1984 - Found cast iron monument and updated ties.

June 15, 1987 - Found cast iron monument and updated ties.

July 14, 1997 - Found cast iron monument and updated ties.

April 24, 2003 - Established NAD 1983 (1996 adj.) Anoka County project coordinates by static GPS methods.

March 11, 2014 - Found cast iron monument. Verified position by VRS GPS methods. Updated ties.

December 17, 2020 - Found cast iron monument up 0.1'± and updated ties.

November 8th, 2022 - Found cast iron monument, verified position by VRS GPS method and updated the ties.