

# CERTIFICATE OF LOCATION OF GOVERNMENT CORNER

County of Anoka

State of Minnesota

## North $\frac{1}{4}$ Corner of Sec. 27 Township 34 Range 24

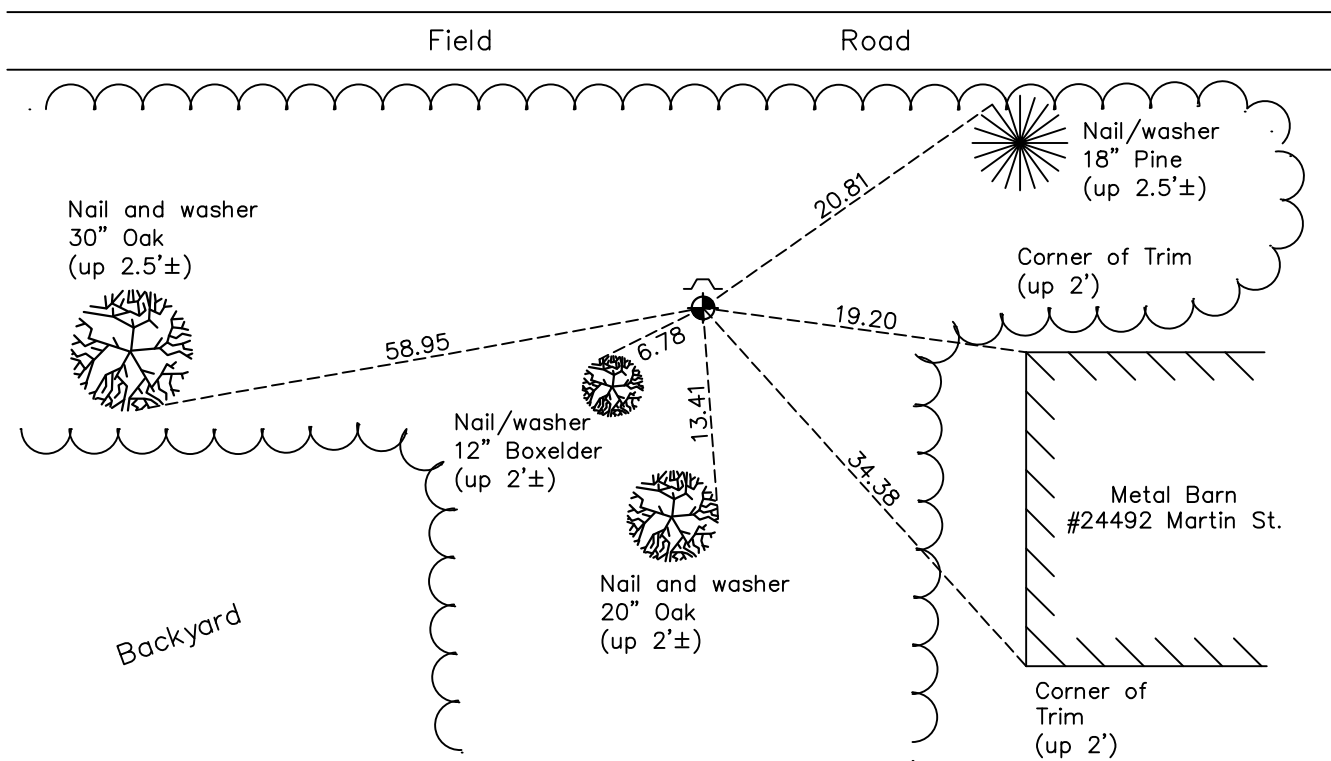
On the 16th day of April, 1971, the described corner was evidenced by area resurvey

and to perpetuate the location of said corner, at the exact location thereof, a permanent marker was placed consisting of a cast iron monument

AND on the 28th day of October, 2022, said permanent marker was found flush with a sign and post on the north side and the ties were updated

Updated reference ties are as shown below.

### F i e l d



N  
  
 ANOKA COUNTY SURVEYOR  
 S

Revision Date  
1/25/2023

N.A.D. 1983 Coordinates  
(1996 Adjustment)

County Project Coordinates	
Northing	<u>237954.9633</u>
Easting	<u>487175.4418</u>
Date	<u>4/22/03</u>

I hereby certify that this United States public land survey monument record is correct and complete to the best of my knowledge and belief.

*David Zieglmeier* Date 2/22/23

David M. Zieglmeier, Anoka County Surveyor  
 Minnesota License Number 46179

# HISTORY OF GOVERNMENT CORNER

Page No. 6

County of Anoka

State of Minnesota

## North 1/4 Corner of Sec. 27 Township 34 Range 24

### **CORNER HISTORY:**

April 16, 1971 - Set cast iron monument using area resurvey. Established ties to monument. Set sign and post 0.5'± north of monument.

June 17, 1974 - Found cast iron monument and updated ties.

May 4, 1977 - Found cast iron monument and updated ties.

August 29, 1980 - Found cast iron monument and updated ties.

July 21, 1992 - Found cast iron monument and updated ties.

July 16, 1997 - Found cast iron monument and updated ties.

April 22, 2003 - Found cast iron monument and updated ties. Established NAD 1983 (1996 adj.) Anoka County project coordinates by static GPS methods.

March 17, 2014 - Found cast iron monument and updated ties.

July 9, 2020 - Found cast iron monument flush. Verified position by VRS GPS methods. Updated ties.

October 28, 2022 - Found cast iron monument flush, verified position by VRS GPS method and updated ties.