

CERTIFICATE OF LOCATION OF GOVERNMENT CORNER

County of Anoka

State of Minnesota

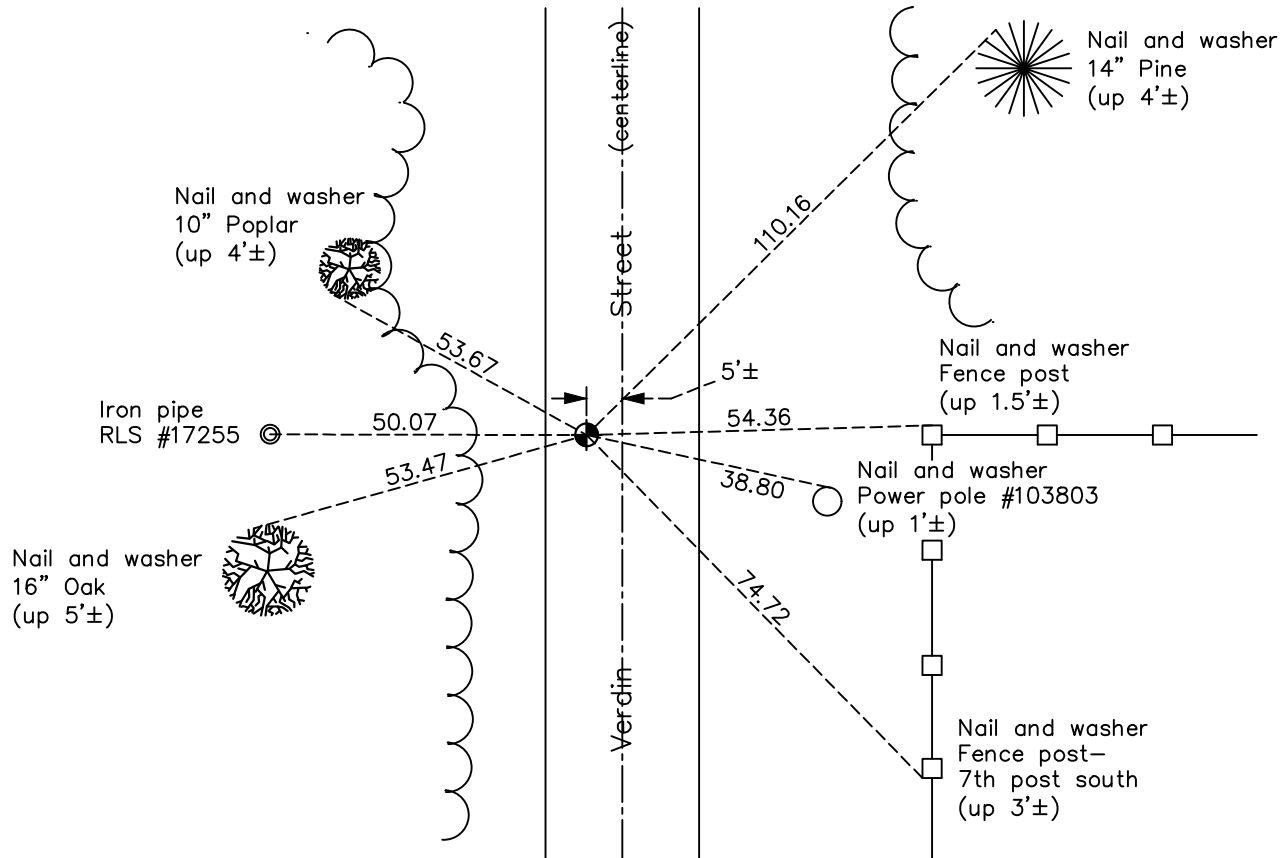
Northeast Corner of Sec. 28 Township 34 Range 24

On the 9th day of May, 1969, the described corner was evidenced by area resurvey

and to perpetuate the location of said corner, at the exact location thereof, a permanent marker was placed consisting of a cast iron monument

AND on the 27th day of October, 2022, said permanent marker was found flush with the road surface and the ties were updated

Updated reference ties are as shown below.



N.A.D. 1983 Coordinates
(1996 Adjustment)

County Project Coordinates	
Northing	<u>237978.2926</u>
Easting	<u>484495.7738</u>
Date	<u>4/24/03</u>

Revision Date

1/25/2023

I hereby certify that this United States public land survey monument record is correct and complete to the best of my knowledge and belief.

David Zieglsmeier Date 2/22/23

David M. Zieglsmeier, Anoka County Surveyor

Minnesota License Number 46179

HISTORY OF GOVERNMENT CORNER

Page No. 7

County of Anoka

State of Minnesota

Northeast Corner of Sec. 28 Township 34 Range 24

CORNER HISTORY:

May 9, 1969 - Set cast iron monument flush in blacktop using area resurvey. Established ties to monument.

June 5, 1974 - Found cast iron monument and updated ties.

May 3, 1977 - Found cast iron monument and updated ties.

August 26, 1980 - Found cast iron monument and updated ties.

July 23, 1984 - Found cast iron monument missing. Reset cast iron monument and updated ties.

June 12, 1987 - Found cast iron monument and updated ties.

July 21, 1992 - Found cast iron monument and updated ties.

July 15, 1997 - Found cast iron monument and updated ties.

April 24, 2003 - Established NAD 1983 (1996 adj.) Anoka County project coordinates by static GPS methods.

April 23, 2014 - Found cast iron monument broken. Replaced with a new cast iron monument and updated ties. Verified position by VRS GPS methods.

July 8, 2020 - Reset cast iron monument flush after construction using static GPS methods. Updated ties.

October 27, 2022 - Found Cast Iron Monument flush, verified position by VRS GPS method and updated ties.