

CERTIFICATE OF LOCATION OF GOVERNMENT CORNER

County of Anoka

State of Minnesota

Witness Corner of Sec. 28 Township 34 Range 24

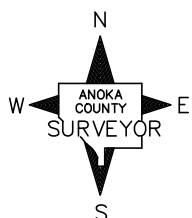
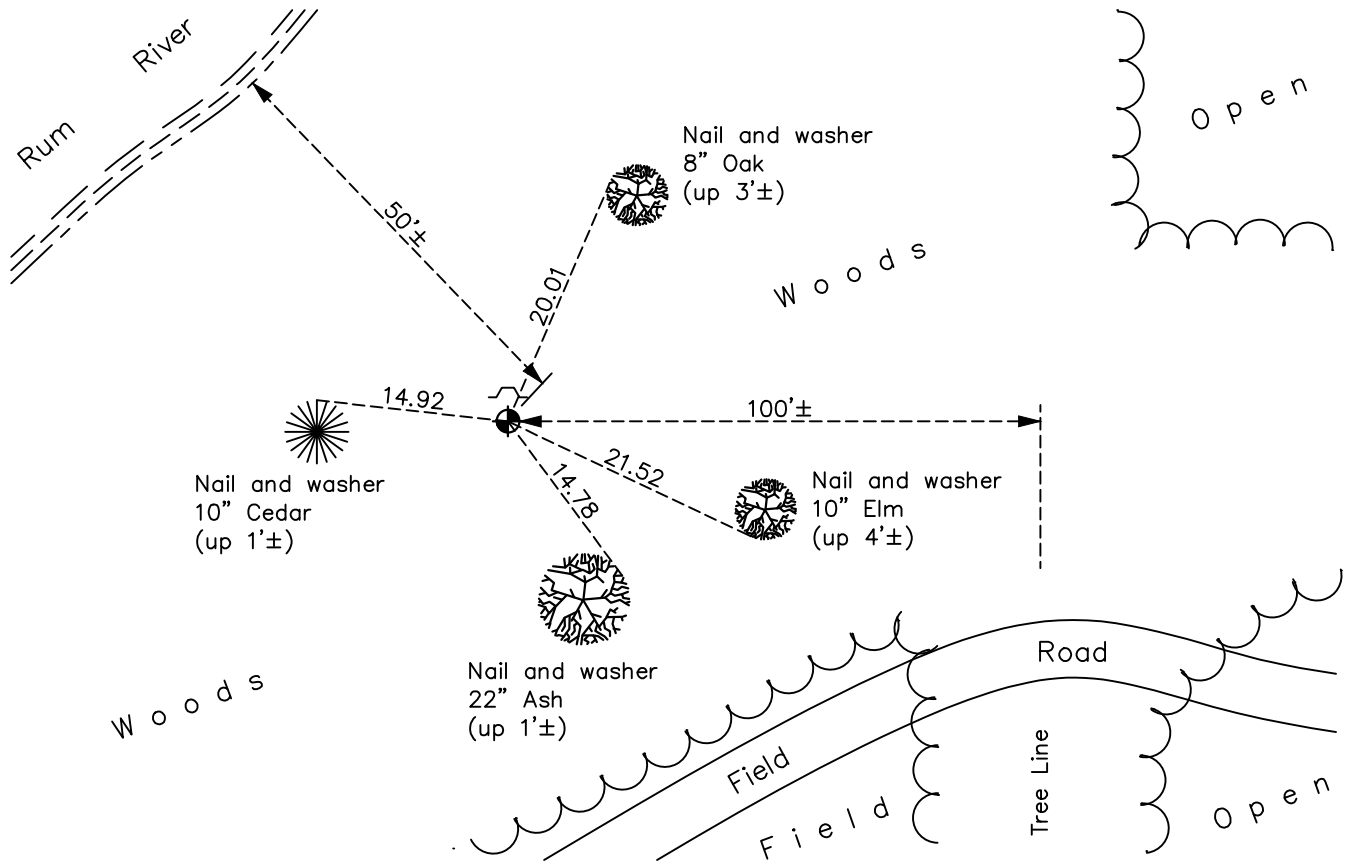
(On north line of section)

On the 27th day of July, 1970, the described corner was evidenced by area resurvey

and to perpetuate the location of said corner, at the exact location thereof, a permanent marker was placed consisting of a cast iron monument with a sign and post on the north side

AND on the 16th day of November, 2022, said permanent marker was found flush and the ties were updated

Updated reference ties are as shown below.



Revision Date
1/25/2023

N.A.D. 1983 Coordinates
 (1996 Adjustment)

County Project Coordinates	
Northing	<u>237967.5429</u>
Easting	<u>480459.9666</u>
Date	<u>4/22/03</u>

I hereby certify that this United States public land survey monument record is correct and complete to the best of my knowledge and belief.

David Zieglmeier Date 2/22/23

David M. Zieglmeier, Anoka County Surveyor
 Minnesota License Number 46179

HISTORY OF GOVERNMENT CORNER

County of Anoka

State of Minnesota

Witness Corner of Sec. 28 Township 34 Range 24
(On north line of section)

CORNER HISTORY:

July 27, 1970 - Set cast iron monument using area resurvey. Established ties to monument.

June 18, 1974 - Found cast iron monument down 0.1'± and updated ties.

May 4, 1977 - Found cast iron monument and updated ties.

August 25, 1980 - Found cast iron monument and updated ties.

July 25, 1984 - Found cast iron monument and updated ties.

June 15, 1987 - Found cast iron monument w/sign and post on the north side. Updated ties.

July 23, 1992 - Found cast iron monument and updated ties.

July 29, 1997 - Found cast iron monument and updated ties.

April 22, 2003 - Established NAD 1983 (1996 adj.) Anoka County project coordinates by static GPS methods.

April 7, 2014 - Found cast iron monument and updated ties.

September 10, 2020 - Found cast iron monument and updated ties.

November 16, 2022 - Found cast iron monument flush, verified position by VRS GPS method and updated ties.