

CERTIFICATE OF LOCATION OF GOVERNMENT CORNER

County of Anoka

State of Minnesota

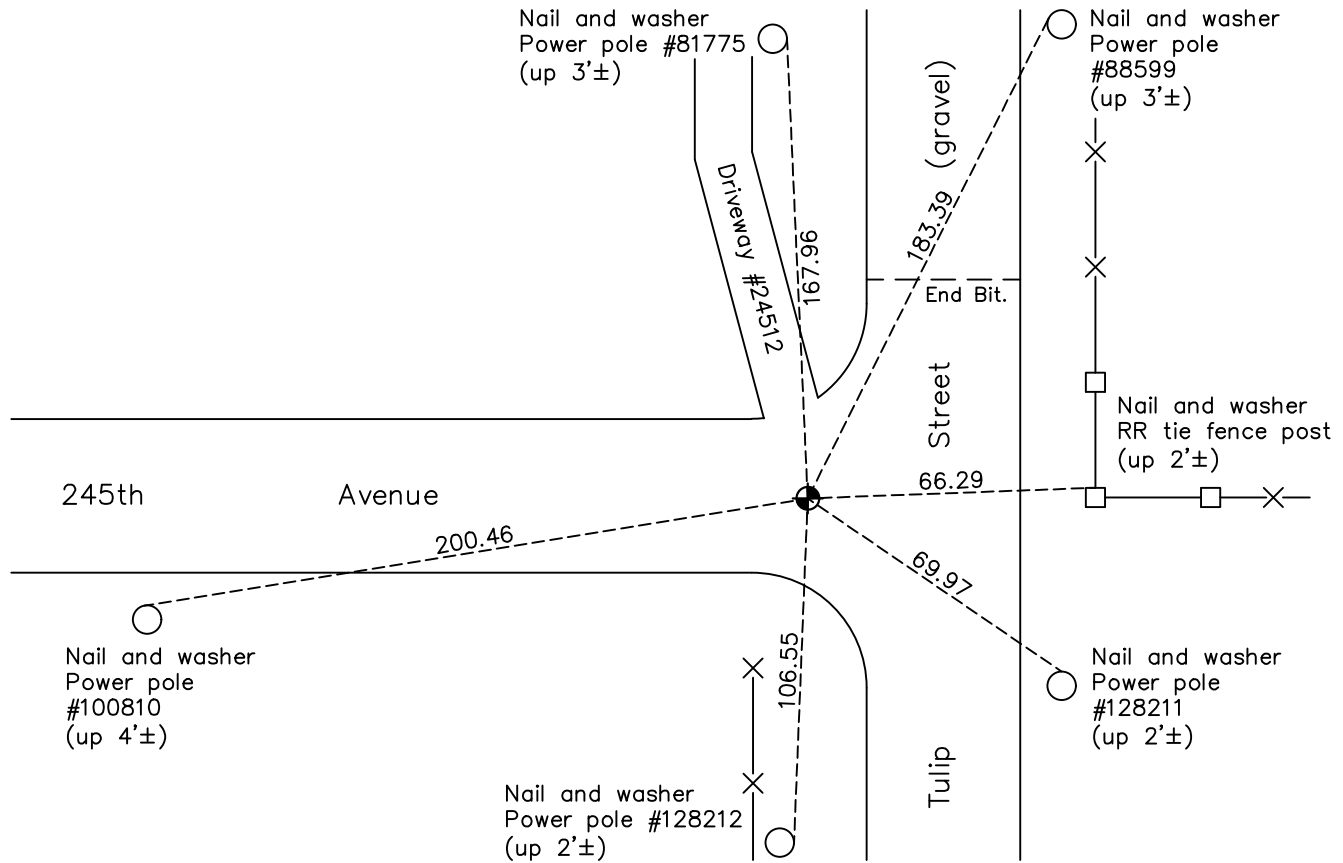
North 1/4 Corner of Sec. 29 Township 34 Range 24

On the 1st day of September, 1965, the described corner was evidenced by a 1" iron pipe found by D. Pepper

and to perpetuate the location of said corner, at the exact location thereof, a permanent marker was placed consisting of a partial 3/4 cast iron monument

AND on the 27th day of October, 2022, said permanent marker was found flush with the road surface and the ties were updated

Updated reference ties are as shown below.



Revision Date

1/25/2023

N.A.D. 1983 Coordinates
(1996 Adjustment)

County Project Coordinates	
Northing	<u>237973.1107</u>
Easting	<u>476712.9915</u>
Date	<u>4/29/03</u>

I hereby certify that this United States public land survey monument record is correct and complete to the best of my knowledge and belief.

David Zieglmeier Date 2/22/23

David M. Zieglmeier, Anoka County Surveyor
Minnesota License Number 46179

HISTORY OF GOVERNMENT CORNER

Page No. 12

County of Anoka

State of Minnesota

North 1/4 Corner of Sec. 29 Township 34 Range 24

CORNER HISTORY:

April 2, 1964 - Found 1" iron pipe down 0.5'± used by Donn Pepper. Updated ties.

September 1, 1965 - Found 1" iron pipe replaced with a cast iron monument by N.C. Hoium. Updated ties.

June 30, 1970 - Found cast iron monument down 0.4'± and updated ties.

June 18, 1974 - Found cast iron monument down 3'±. Replaced with a cast iron monument down 0.5'± and updated ties.

May 3, 1977 - Found cast iron monument and updated ties.

August 20, 1980 - Found cast iron monument and updated ties.

July 26, 1984 - Found cast iron monument and updated ties.

June 16, 1987 - Found cast iron monument and updated ties.

July 17, 1992 - Found cast iron monument and updated ties.

July 15, 1997 - Found cast iron monument and updated ties.

April 29, 2003 - Established NAD 1983 (1996 adj.) Anoka County project coordinates by static GPS methods.

March 12, 2014 - Found cast iron monument down 1'±. Verified position by VRS GPS methods. Updated ties.

July 13, 2020 - Found cast iron monument down 1'± and paved over. Reset with a partial 3/4 cast iron monument set flush using static GPS methods. Updated ties.

October 27, 2022 - Found cast iron monument flush, verified position by VRS GPS method and updated ties.