

CERTIFICATE OF LOCATION OF GOVERNMENT CORNER

County of Anoka

State of Minnesota

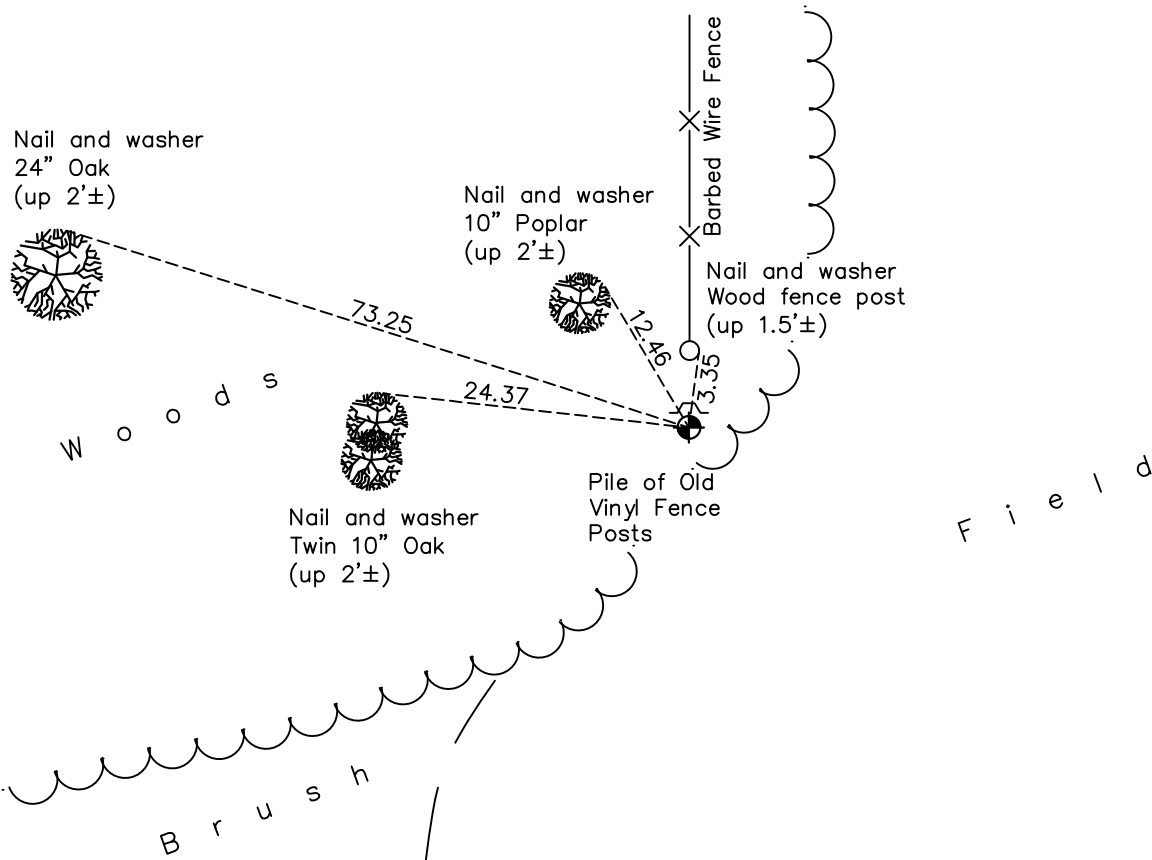
North 1/4 Corner of Sec. 30 Township 34 Range 24

On the 17th day of April, 1973, the described corner was evidenced by area resurvey

and to perpetuate the location of said corner, at the exact location thereof, a permanent marker was placed consisting of a cast iron monument with a MNDOT sign and post 1'± north of
monument

AND on the 3rd day of November, 2022, said permanent marker was found up 0.1'± with a
broken MNDOT sign and post 1± to the North and the ties were updated

Updated reference ties are as shown below.



Revision Date

1/25/2023

N.A.D. 1983 Coordinates
(1996 Adjustment)

County Project Coordinates	
Northing	<u>237997.3343</u>
Easting	<u>471432.1165</u>
Date	<u>4/22/03</u>

I hereby certify that this United States public land survey monument record is correct and complete to the best of my knowledge and belief.

David Zieglmeier Date 2/22/23

David M. Zieglmeier, Anoka County Surveyor

Minnesota License Number 46179

HISTORY OF GOVERNMENT CORNER

Page No. 14

County of Anoka

State of Minnesota

North 1/4 Corner of Sec. 30 Township 34 Range 24

CORNER HISTORY:

April 17, 1973 - Set cast iron monument using area resurvey. Established ties to monument. Set sign and post 1'± north of monument.

June 13, 1974 - Found cast iron monument and updated ties.

May 4, 1977 - Found cast iron monument and updated ties.

August 26, 1980 - Found cast iron monument and updated ties.

July 26, 1984 - Found cast iron monument and updated ties.

June 24, 1987 - Found cast iron monument and updated ties.

July 27, 1992 - Found cast iron monument and updated ties.

July 21, 1997 - Found cast iron monument and updated ties.

April 22, 2003 - Established NAD 1983 (1996 adj.) Anoka County project coordinates by static GPS methods.

March 27, 2014 - Found cast iron monument w/MnDOT sign and post 1'± north of monument. Updated ties.

July 10, 2020 - Found cast iron monument up 0.1'±. Verified position by VRS GPS methods. Updated ties.

November 3, 2022 - Found cast iron monument up 0.1'±, verified position by VRS GPS method, updated ties.