

CERTIFICATE OF LOCATION OF GOVERNMENT CORNER

County of Anoka

State of Minnesota

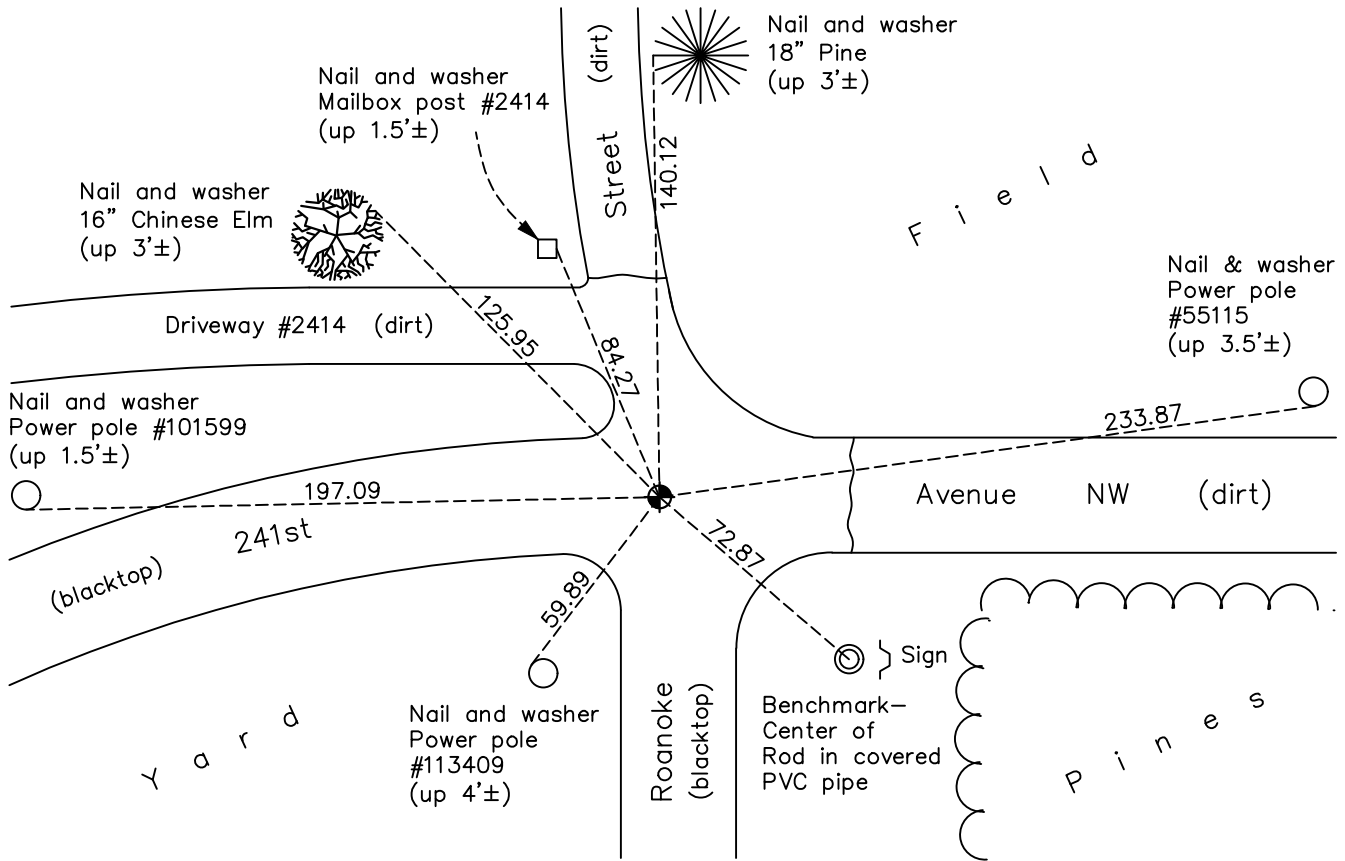
West 1/4 Corner of Sec. 30 Township 34 Range 24

On the 25th day of July, 1974, the described corner was evidenced by a 3/4" iron pipe found during area resurvey

and to perpetuate the location of said corner, at the exact location thereof, a permanent marker was placed consisting of a cast iron monument

AND on the 17th day of May, 2023, said permanent marker was set cast iron monument after road construction, verified position using RTK GPS methods. Updated ties.

Updated reference ties are as shown below.



Revision Date

6/1/2023

N.A.D. 1983 Coordinates
(1996 Adjustment)

County Project Coordinates	
Northing	<u>235345.0002</u>
Easting	<u>468737.0579</u>
Date	<u>4/30/03</u>

I hereby certify that this United States public land survey monument record is correct and complete to the best of my knowledge and belief.

David Zieglermeier Date 7/19/23

David M. Zieglermeier, Anoka County Surveyor
Minnesota License Number 46179

HISTORY OF GOVERNMENT CORNER

Page No. 16

County of Anoka

State of Minnesota

West 1/4 Corner of Sec. 30 Township 34 Range 24

CORNER HISTORY:

July 25, 1974 - Found 3/4" iron pipe using area resurvey and replaced with a cast iron monument down 0.5'±.
Established ties to monument.

5/3/77, 8/20/80, 7/20/84, 6/11/87, 7/20/92, 7/15/97, 3/9/01 - Found cast iron monument and updated ties.

April 30, 2003 - Established NAD 1983 (1996 adj.) Anoka County project coordinates by static GPS methods.

3/13/14, 6/30/20 - Found cast iron monument. Verified position by VRS GPS methods. Updated ties.

May 17, 2023 - Set cast iron monument after road construction, verified position using RTK GPS methods.
Updated ties. Job no. 22-131