

CERTIFICATE OF LOCATION OF GOVERNMENT CORNER

County of Anoka

State of Minnesota

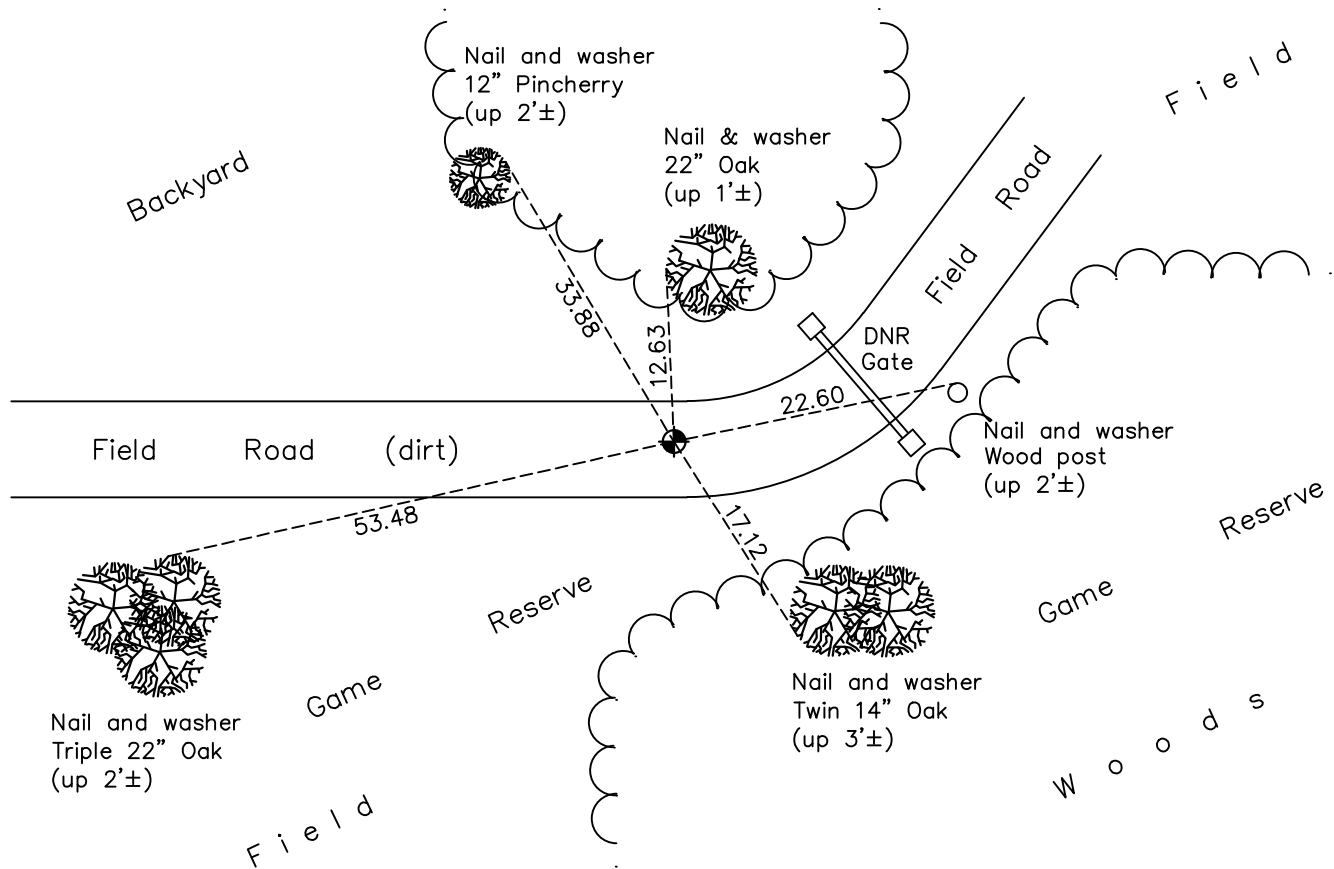
East 1/4 Corner of Sec. 27 Township 34 Range 24

On the 16th day of April, 1971, the described corner was evidenced by area resurvey

and to perpetuate the location of said corner, at the exact location thereof, a permanent marker was placed consisting of a cast iron monument

AND on the 28th day of October, 2022, said permanent marker was found down 0.3'± and the ties were updated

Updated reference ties are as shown below.



Revision Date

1/25/2023

N.A.D. 1983 Coordinates
(1996 Adjustment)

County Project Coordinates	
Northing	<u>235320.1316</u>
Easting	<u>489813.6062</u>
Date	<u>4/17/03</u>

I hereby certify that this United States public land survey monument record is correct and complete to the best of my knowledge and belief.

David Zieglmeier Date 2/28/23

David M. Zieglmeier, Anoka County Surveyor
Minnesota License Number 46179

HISTORY OF GOVERNMENT CORNER

Page No. 20

County of Anoka

State of Minnesota

East 1/4 Corner of Sec. 27 Township 34 Range 24

CORNER HISTORY:

April 16, 1971 - Set cast iron monument down 0.2'± using area resurvey. Established ties to monument.

June 10, 1974 - Found cast iron monument and updated ties.

May 4, 1977 - Found cast iron monument and updated ties.

August 28, 1980 - Found cast iron monument and updated ties.

July 27, 1984 - Found cast iron monument and updated ties.

June 12, 1987 - Found cast iron monument and updated ties.

July 12, 1992 - Found cast iron monument and updated ties.

July 18, 1997 - Found cast iron monument and updated ties.

April 17, 2003 - Found cast iron monument and updated ties. Established NAD 1983 (1996 adj.) Anoka County project coordinates by static GPS methods.

April 7, 2014 - Found cast iron monument down 0.3'±. Verified position by VRS GPS methods. Updated ties.

July 9th, 2020 - Found cast iron monument down 0.3'±. Verified position by VRS GPS methods. Updated ties.

October 28, 2022 - Found cast iron monument down 0.3'±, verified position by VRS GPS method, updated ties.