

CERTIFICATE OF LOCATION OF GOVERNMENT CORNER

County of Anoka

State of Minnesota

Witness Corner of Sec. 25 Township 34 Range 24

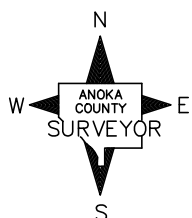
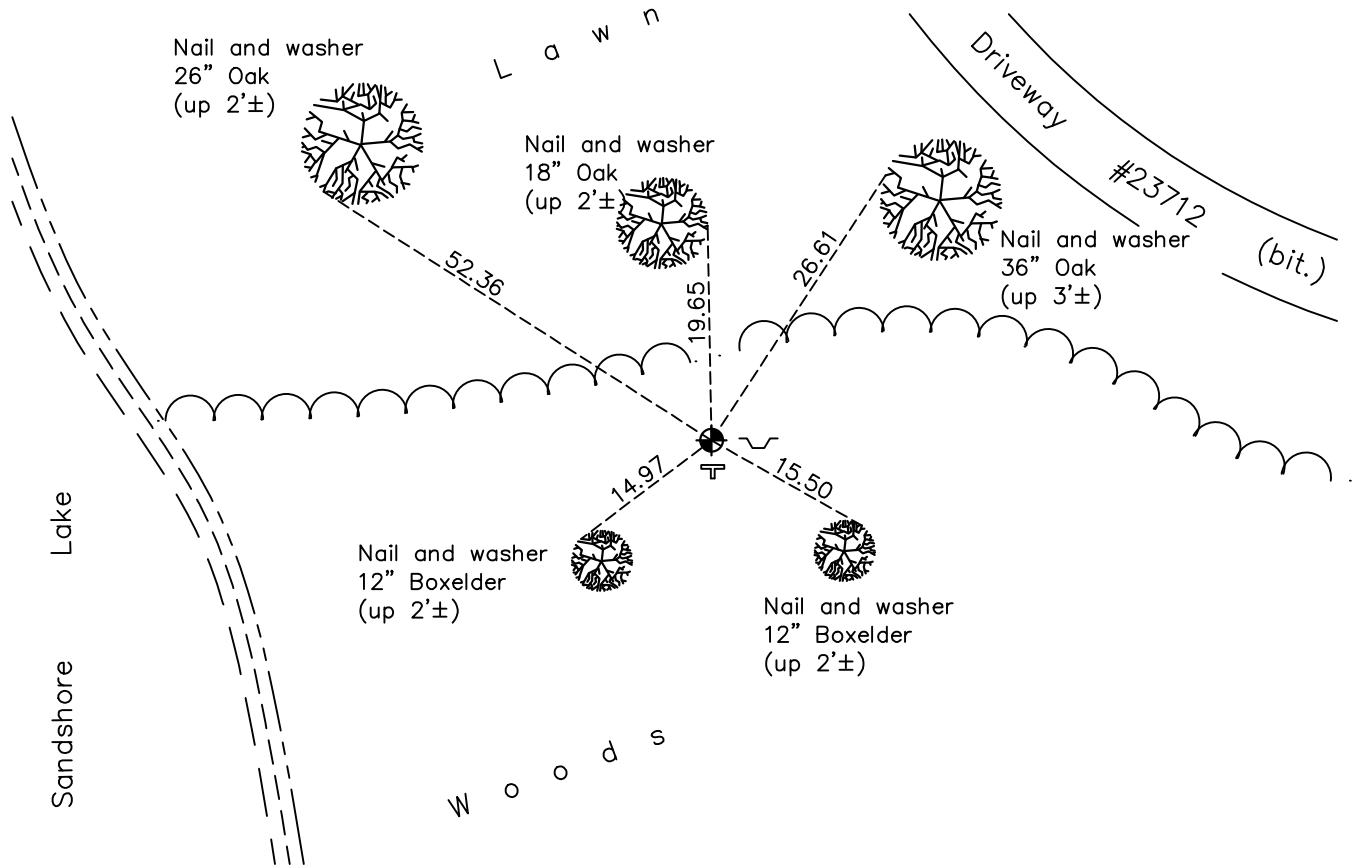
(On south line of section)

On the 18th day of July, 1969, the described corner was evidenced by area resurvey

and to perpetuate the location of said corner, at the exact location thereof, a permanent marker was placed consisting of a cast iron monument

AND on the 8th day of November, 2022, said permanent marker was found flush with a DNR sign to the East and "T" post to the South

Updated reference ties are as shown below.



Revision Date

1/25/2023

N.A.D. 1983 Coordinates
(1996 Adjustment)

County Project Coordinates	
Northing	<u>232721.4827</u>
Easting	<u>498667.8532</u>
Date	<u>4/24/03</u>

I hereby certify that this United States public land survey monument record is correct and complete to the best of my knowledge and belief.

David Zieglmeier Date 3/1/23

David M. Zieglmeier, Anoka County Surveyor
Minnesota License Number 46179

HISTORY OF GOVERNMENT CORNER

County of Anoka

State of Minnesota

Witness Corner of Sec. 25 Township 34 Range 24
(On south line of section)

CORNER HISTORY:

- July 18, 1969 - Set cast iron monument flush using area resurvey. Established ties to monument.
- June 17, 1974 - Found cast iron monument and updated ties.
- May 4, 1977 - Found cast iron monument and updated ties.
- June 8, 1981 - Found cast iron monument and updated ties.
- July 31, 1984 - Found cast iron monument and updated ties.
- June 15, 1987 - Found cast iron monument and updated ties.
- July 24, 1992 - Found cast iron monument and updated ties.
- July 14, 1997 - Found cast iron monument and updated ties.
- April 24, 2003 - Established NAD 1983 (1996 adj.) Anoka County project coordinates by static GPS methods.
- March 11, 2014 - Found cast iron monument with a "DNR" sign on the east and a "T" post on the south side. Updated ties.
- July 21, 2020 - Found cast iron monument flush and updated ties.
- November 8, 2022 - Found cast iron monument flush, verified position by VRS GPS method and updated ties.