

CERTIFICATE OF LOCATION OF GOVERNMENT CORNER

County of Anoka

State of Minnesota

Witness Corner of Sec. 25 Township 34 Range 24

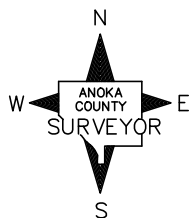
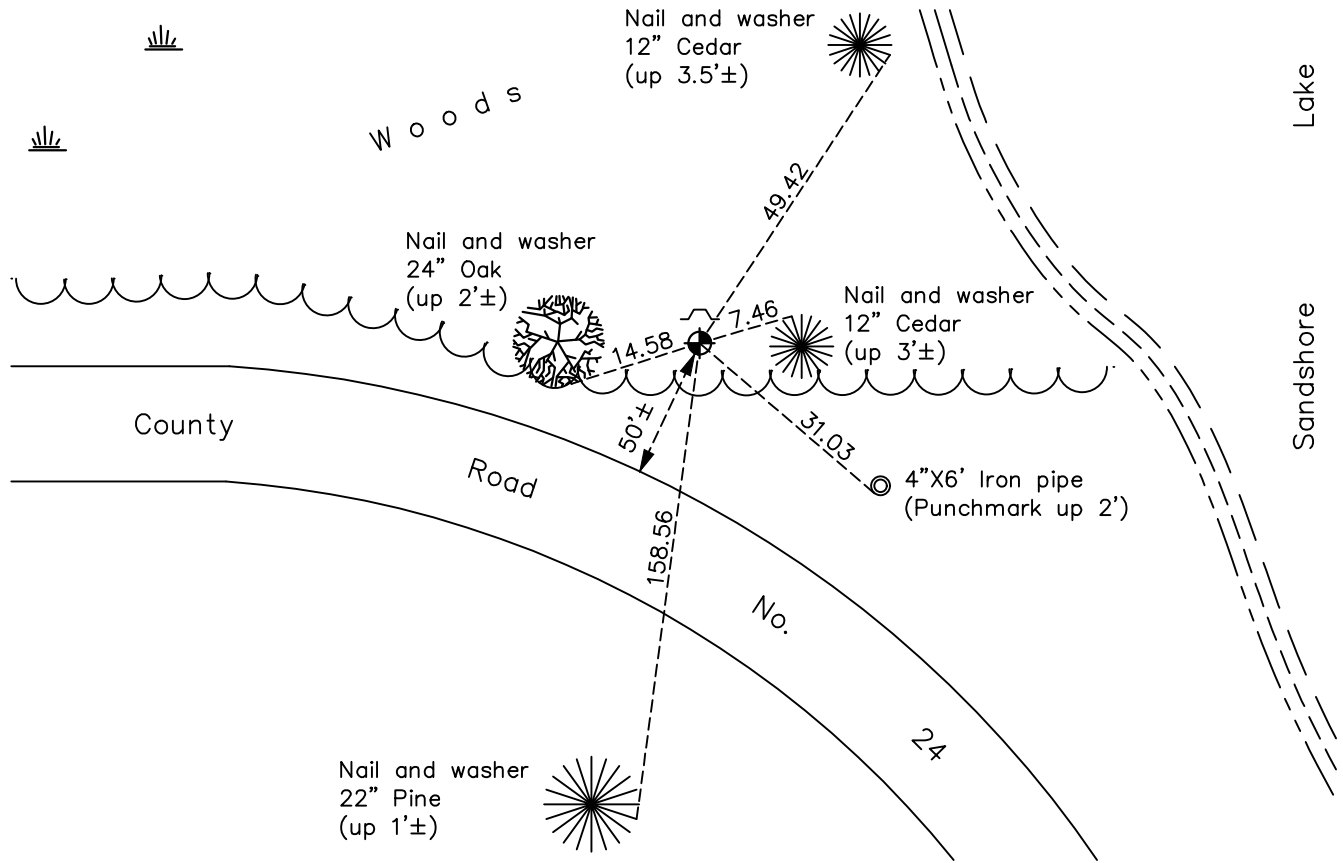
(On south line of section)

On the 18th day of July, 1969, the described corner was evidenced by area resurvey

and to perpetuate the location of said corner, at the exact location thereof, a permanent marker was placed consisting of a cast iron monument

AND on the 7th day of November, 2022, said permanent marker was found down 0.2'± with a sign and post on the north side and the ties were updated

Updated reference ties are as shown below.



Revision Date
1/25/2023

N.A.D. 1983 Coordinates
 (1996 Adjustment)

County Project Coordinates	
Northing	<u>232713.8766</u>
Easting	<u>497470.4158</u>
Date	<u>4/24/03</u>

I hereby certify that this United States public land survey monument record is correct and complete to the best of my knowledge and belief.

David Zieglmeier Date 3/1/23

David M. Zieglmeier, Anoka County Surveyor
 Minnesota License Number 46179

HISTORY OF GOVERNMENT CORNER

County of Anoka

State of Minnesota

Witness Corner of Sec. 25 Township 34 Range 24
(On south line of section)

CORNER HISTORY:

July 18, 1969 - Set cast iron monument flush using area resurvey. Established ties to monument.

June 17, 1974 - Found cast iron monument and updated ties.

May 4, 1977 - Found cast iron monument and updated ties.

November 11, 1980 - Found cast iron monument and updated ties.

July 27, 1984 - Found cast iron monument and updated ties.

June 15, 1987 - Found cast iron monument and updated ties.

July 24, 1992 - Found cast iron monument and updated ties.

July 9, 1997 - Found cast iron monument and updated ties.

April 24, 2003 - Found cast iron monument w/sign and post on the north side. Updated ties. Established NAD 1983 (1996 adj.) Anoka County project coordinates bystatic GPS methods.

March 11, 2014 - Found cast iron monument down 0.5'± and updated ties.

July 13, 2020 - Found cast iron monument down 0.5'± and updated ties.

November 7, 2022 - Found cast iron monument down 0.2'±, verified position by VRS GPS method, updated ties