

# CERTIFICATE OF LOCATION OF GOVERNMENT CORNER

County of Anoka

State of Minnesota

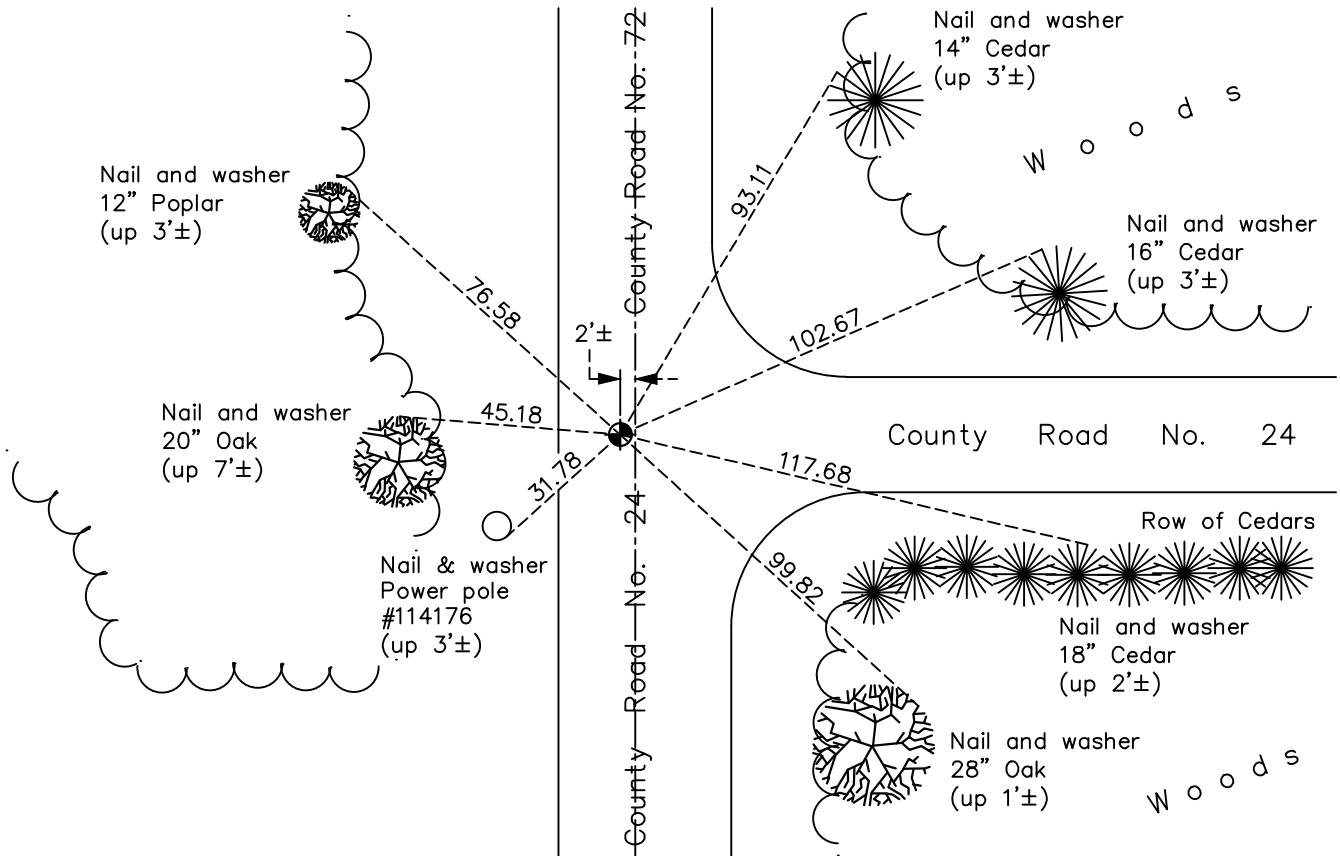
## South 1/4 Corner of Sec. 27 Township 34 Range 24

On the 7th day of January, 1971, the described corner was evidenced by area resurvey

and to perpetuate the location of said corner, at the exact location thereof, a permanent marker was placed consisting of a cast iron monument

AND on the 10th day of November, 2022, said permanent marker was found flush with road surface and the ties were updated

Updated reference ties are as shown below.



Revision Date  
1/25/2023

N.A.D. 1983 Coordinates  
(1996 Adjustment)

County Project Coordinates	
Northing	<u>232700.2626</u>
Easting	<u>487169.2407</u>
Date	<u>4/24/03</u>

I hereby certify that this United States public land survey monument record is correct and complete to the best of my knowledge and belief.

*David Zieglsmeier* Date 3/1/23

David M. Zieglsmeier, Anoka County Surveyor  
Minnesota License Number 46179

# HISTORY OF GOVERNMENT CORNER

Page No. 27

County of Anoka

State of Minnesota

## South 1/4 Corner of Sec. 27 Township 34 Range 24

### **CORNER HISTORY:**

January 7, 1971 - Set cast iron monument flush using area resurvey. Established ties to monument.

June 4, 1973 - Found cast iron monument and updated ties.

May 4, 1977 - Found cast iron monument and updated ties.

August 27, 1980 - Found cast iron monument and updated ties.

July 21, 1992 - Found cast iron monument and updated ties.

July 11, 1997 - Found cast iron monument and updated ties.

May 12, 1999 - Found cast iron monument and set construction ties prior to construction. Removed monument.

May 17, 1999 - Set cast iron monument flush after construction and updated ties.

April 24, 2003 - Found cast iron monument and updated ties. Established NAD 1983 (1996 adj.) Anoka County project coordinates by static GPS methods.

March 12, 2014 - Found cast iron monument. Verified position by VRS GPS methods. Updated ties.

July 8, 2020 - Reset cast iron monument flush after road construction using static GPS methods. Verified position by VRS GPS methods. Updated ties.

November 10, 2022 - Found cast iron monument flush, verified position by VRS GPS method and updated ties.