

CERTIFICATE OF LOCATION OF GOVERNMENT CORNER

County of Anoka

State of Minnesota

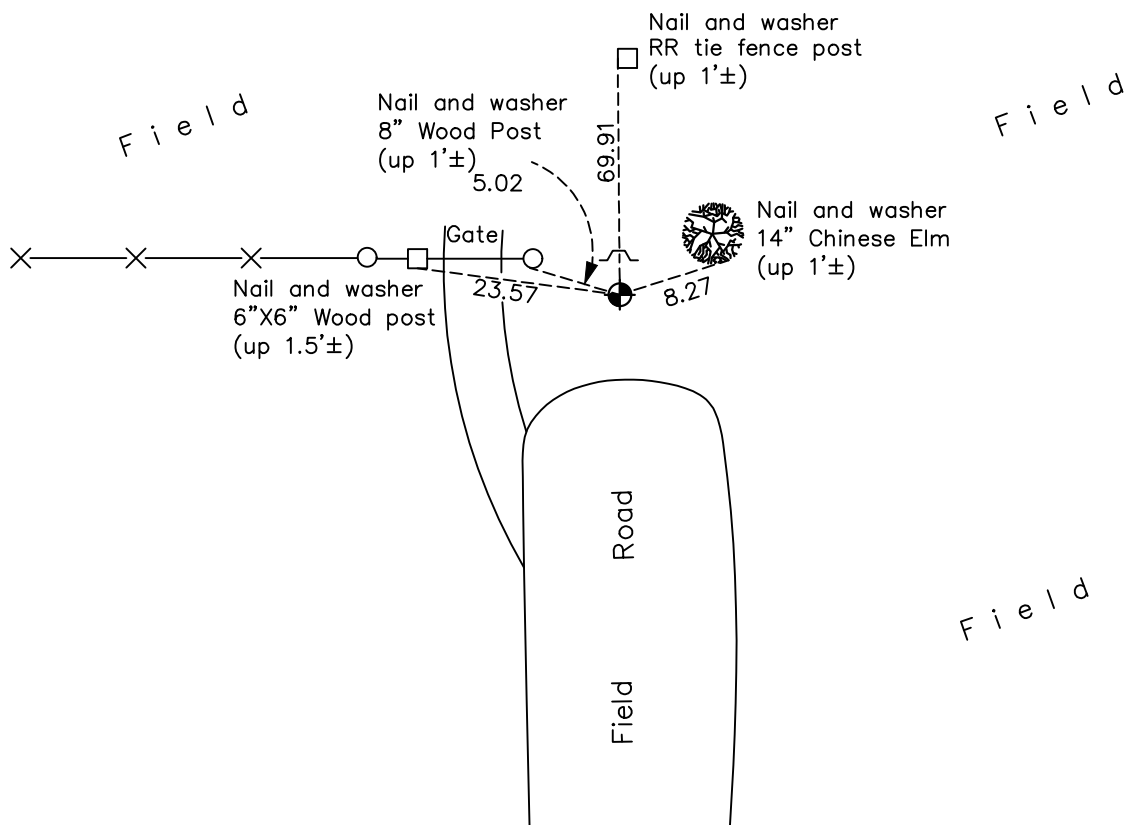
Northeast Corner of Sec. 32 Township 34 Range 24

On the 7th day of June, 1961, the described corner was evidenced by a 6" X 6" granite monument

and to perpetuate the location of said corner, at the exact location thereof, a permanent marker was placed consisting of the same granite monument (removed April 2021)

AND on the 29th day of June, 2023, said permanent marker was reset w/ solid Cast Iron Monument, set flush, to published coordinates & historical ties. Updated ties after resetting.

Updated reference ties are as shown below.



Revision Date
10/05/2023

N.A.D. 1983 Coordinates
 (1996 Adjustment)

County Project Coordinates	
Northing	<u>232693.2321</u>
Easting	<u>479242.2438</u>
Date	<u>8/15/01</u>

I hereby certify that this United States public land survey monument record is correct and complete to the best of my knowledge and belief.

David Zieglmeier Date 3/29/24

David Zieglmeier Anoka County Surveyor
 Minnesota License Number 46179

HISTORY OF GOVERNMENT CORNER

Page No. 30

County of Anoka

State of Minnesota

Northeast Corner of Sec. 32 Township 34 Range 24

CORNER HISTORY:

June 7, 1961 - Found 6" x 6" granite monument down 1.5'±. Set 14" irons on north and south faces of the monument. Updated ties.

September 1, 1965 - Found granite monument and updated ties.

June 30, 1970 - Found granite monument and updated ties.

June 4, 1974 - Found granite monument and updated ties.

May 5, 1977 - Found granite monument and updated ties.

November 11, 1980 - Found granite monument down 0.7'± and updated ties.

June 12, 1987 - Found granite monument and updated ties.

July 21, 1992 - Found granite monument and updated ties.

May 22, 1997 - Found granite monument and updated ties.

July 15, 1997 - Found granite monument down 1'± w/sign and post on the north side. Updated ties.

August 15, 2001 - Established NAD 1983 (1996 adj.) Anoka County project coordinates by static GPS methods.

April 2, 2014 - Found granite monument down 2'±. Verified position by VRS GPS methods. Updated ties.

July 24, 2020 - Found granite monument down 2'± and updated ties.

April 8, 2021 - Found granite monument down 2'±, set construction ties and verified position by VRS GPS methods prior to construction. Removed monument.

June 29, 2023 - Reset corner with solid Cast Iron Monument, set flush with surface, to published coordinates using ACS RTK GPS method. Further verified with historical ties. Updated ties after resetting.