

CERTIFICATE OF LOCATION OF GOVERNMENT CORNER

County of Anoka

State of Minnesota

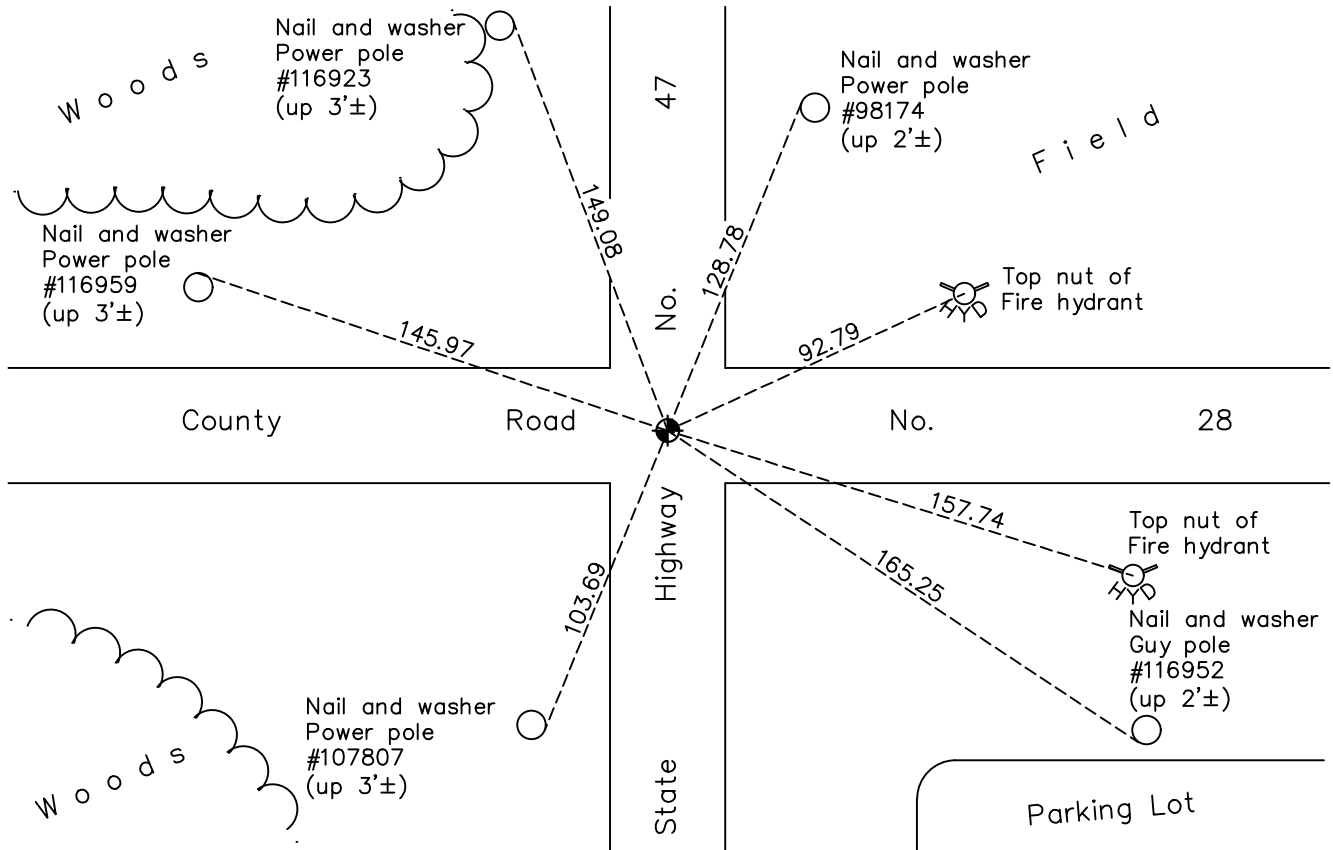
Northeast Corner of Sec. 31 Township 34 Range 24

On the 19th day of May, 1966, the described corner was evidenced by area resurvey

and to perpetuate the location of said corner, at the exact location thereof, a permanent marker was placed consisting of a cast iron monument

AND on the 18th day of November, 2022, said permanent marker was found flush and the ties were updated

Updated reference ties are as shown below.



N.A.D. 1983 Coordinates
(1996 Adjustment)

County Project Coordinates	
Northing	<u>232693.9943</u>
Easting	<u>473996.3988</u>
Date	<u>8/27/01</u>

Revision Date
1/31/2023

I hereby certify that this United States public land survey monument record is correct and complete to the best of my knowledge and belief.
David Zieglmeier Date 3/1/23
 David Zieglmeier Anoka County Surveyor
 Minnesota License Number 46179

HISTORY OF GOVERNMENT CORNER

Page No. 32

County of Anoka

State of Minnesota

Northeast Corner of Sec. 31 Township 34 Range 24

CORNER HISTORY:

May 19, 1966 - Set cast iron monument flush in centerline centerline of blacktop roads using area resurvey. Established ties to monument.

June 30, 1970 - Found cast iron monument and updated ties.

June 13, 1974 - Found cast iron monument and updated ties.

October 5, 1976 - Found cast iron monument down and raised flush.

May 5, 1977 - Found cast iron monument and updated ties.

May 26, 1981 - Found cast iron monument and updated ties.

June 11, 1987 - Found cast iron monument and updated ties.

July 20, 1992 - Found cast iron monument and updated ties.

July 16, 1997 - Found cast iron monument and updated ties.

August 27, 2001 - Established NAD 1983 (1996 adj.) Anoka County project coordinates by static GPS methods.

April 13, 2006 - Found cast iron monument and updated ties.

March 13, 2014 - Found cast iron monument. Verified position by VRS GPS methods. Updated ties.

September 9, 2020 - Found cast iron monument flush. Verified position by VRS GPS methods. Updated ties.

November 18, 2022 - Found cast iron monument flush, verified position VRS GPS method and updated ties.