

CERTIFICATE OF LOCATION OF GOVERNMENT CORNER

County of Anoka

State of Minnesota

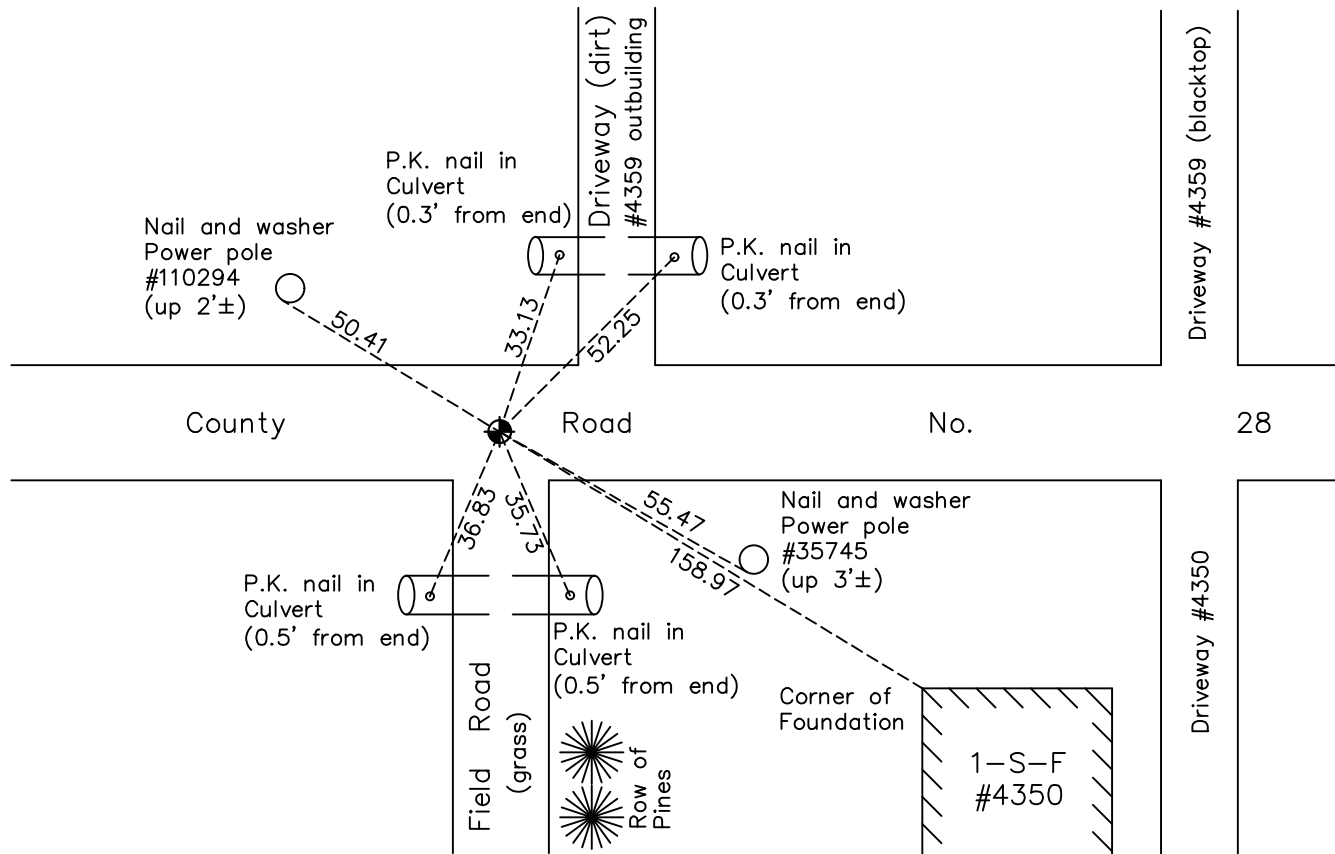
North 1/4 Corner of Sec. 31 Township 34 Range 24

On the 2nd day of September, 1969, the described corner was evidenced by a 6" X 6" granite monument

and to perpetuate the location of said corner, at the exact location thereof, a permanent marker was placed consisting of a cast iron monument set on top of granite monument found down 2.4'±

AND on the 27th day of October, 2022, said permanent marker was found flush and the ties were updated

Updated reference ties are as shown below.



Revision Date
 1/31/2023

N.A.D. 1983 Coordinates
 (1996 Adjustment)

County Project Coordinates	
Northing	<u>232708.8496</u>
Easting	<u>471365.1815</u>
Date	<u>4/29/03</u>

I hereby certify that this United States public land survey monument record is correct and complete to the best of my knowledge and belief.
David Zieglmeier Date 3/1/23
 David Zieglmeier Anoka County Surveyor
 Minnesota License Number 46179

HISTORY OF GOVERNMENT CORNER

Page No. 33

County of Anoka

State of Minnesota

North 1/4 Corner of Sec. 31 Township 34 Range 24

CORNER HISTORY:

May 1958 - MNDOT found a 6" x 6" granite monument down 1'± and placed an iron along side of monument. Updated ties.

June 1, 1961 - Found granite monument down 1'± with 1/2" iron on west face of monument. Updated ties.

April 23, 1962 - Found granite monument down 1'± and updated ties prior to road construction.

September 3, 1965 - Found granite monument and updated ties.

September 2, 1969 - Found granite monument down 2.4'± and set cast iron monument flush on top of granite below. Updated ties.

June 13, 1974 - Found cast iron monument and updated ties.

May 5, 1977 - Found cast iron monument and updated ties.

May 26, 1981 - Found cast iron monument and updated ties.

July 20, 1984 - Found cast iron monument and updated ties.

July 20, 1992 - Found cast iron monument and updated ties.

July 15, 1997 - Found cast iron monument and updated ties.

April 29, 2003 - Established NAD 1983 (1996 adj.) Anoka County project coordinates by static GPS methods.

April 7, 2014 - Found cast iron monument down 0.2'±. Verified position by VRS GPS methods. Updated ties.

August 1, 2014 - Found cast iron monument broken in need of reset.

October 22, 2014 - Replaced broken cast iron monument with new cast iron monument using static GPS methods. Updated ties.

June 30, 2020 - Found cast iron monument set flush to surface. Verified position by using VRS GPS methods and updated ties.

October 27, 2022 - Found cast iron monument set flush, verified position by VRS GPS method and updated ties