

CERTIFICATE OF LOCATION OF GOVERNMENT CORNER

County of Anoka

State of Minnesota

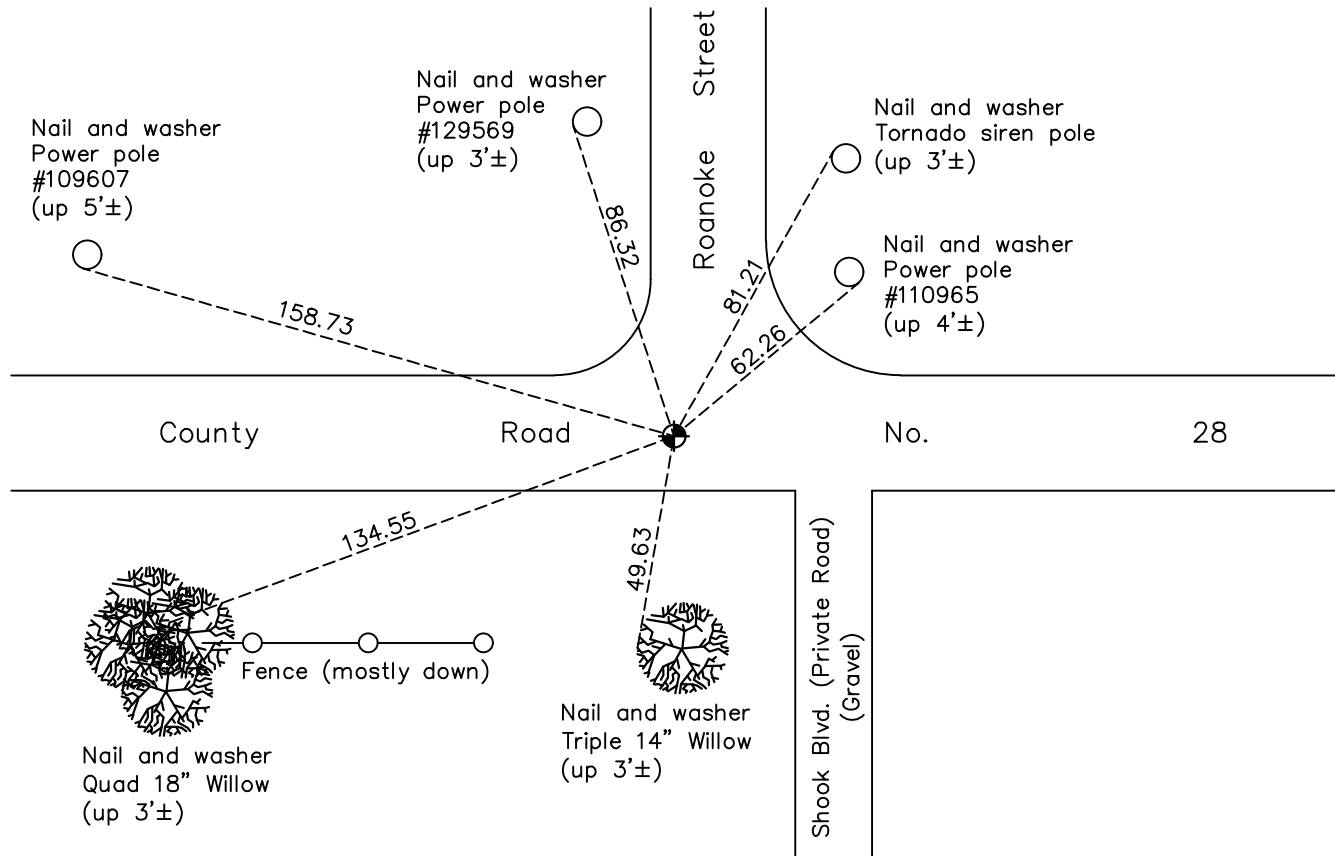
Northwest Corner of Sec. 31 Township 34 Range 24

On the 14th day of June, 1974, the described corner was evidenced by area resurvey

and to perpetuate the location of said corner, at the exact location thereof, a permanent marker was placed consisting of a cast iron monument

AND on the 27th day of October, 2022, said permanent marker was found flush and the ties were updated

Updated reference ties are as shown below.



Revision Date

1/31/2023

N.A.D. 1983 Coordinates
(1996 Adjustment)

County Project Coordinates	
Northing	<u>232714.2485</u>
Easting	<u>468718.5164</u>
Date	<u>4/30/03</u>

I hereby certify that this United States public land survey monument record is correct and complete to the best of my knowledge and belief.

David Zieglmeier Date 3/1/23

David Zieglmeier Anoka County Surveyor
Minnesota License Number 46179

HISTORY OF GOVERNMENT CORNER

Page No. 34

County of Anoka

State of Minnesota

Northwest Corner of Sec. 31 Township 34 Range 24

CORNER HISTORY:

December 14, 1971 - Set 1/2" iron pipe flush in blacktop road using area resurvey. Established ties to iron pipe.

June 14, 1974 - Found iron pipe and replaced with a cast iron monument. Updated ties.

May 5, 1977 - Found cast iron monument and updated ties.

May 26, 1981 - Found cast iron monument and updated ties.

July 20, 1984 - Found cast iron monument and updated ties.

June 11, 1987 - Found cast iron monument and updated ties.

July 20, 1992 - Found cast iron monument and updated ties.

July 15, 1997 - Found cast iron monument and updated ties.

April 30, 2003 - Established NAD 1983 (1996 adj.) Anoka County project coordinates by static GPS methods.

April 7, 2014 - Found cast iron monument down under blacktop and raised flush. Verified position by VRS GPS methods. Updated ties.

June 30, 2020 - Found cast iron monument flush. Verified position by VRS GPS methods. Updated ties.

October 27, 2022 - Found cast iron monument flush, verified position by VRS GPS method and updated ties.