

CERTIFICATE OF LOCATION OF GOVERNMENT CORNER

County of Anoka

State of Minnesota

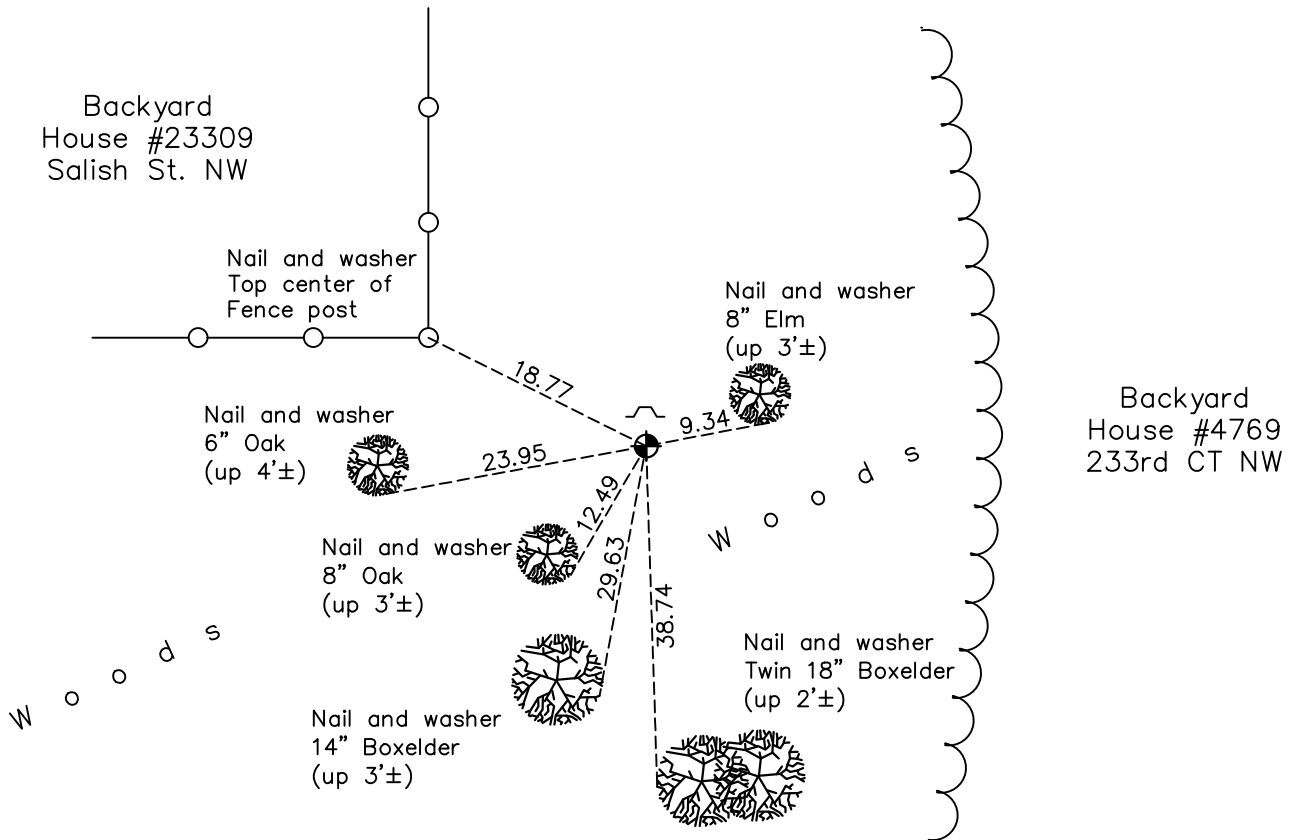
West 1/4 Corner of Sec. 31 Township 34 Range 24

On the 7th day of December, 1971, the described corner was evidenced by area resurvey

and to perpetuate the location of said corner, at the exact location thereof, a permanent marker was placed consisting of a cast iron monument

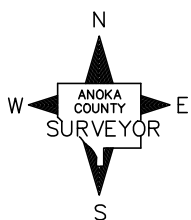
AND on the 27th day of October, 2022, said permanent marker was found up 0.2'± with a sign and post on the north side and the ties were updated

Updated reference ties are as shown below.



Backyard House #23309 Salish St. NW

Backyard House #4769 233rd CT NW



N.A.D. 1983 Coordinates
(1996 Adjustment)

County Project Coordinates	
Northing	<u>230072.2062</u>
Easting	<u>468700.6237</u>
Date	<u>4/15/03</u>

I hereby certify that this United States public land survey monument record is correct and complete to the best of my knowledge and belief.

David Zieglmeier Date 3/1/23

David Zieglmeier Anoka County Surveyor
Minnesota License Number 46179

Revision Date

1/31/2023

HISTORY OF GOVERNMENT CORNER

Page No. 35

County of Anoka

State of Minnesota

West 1/4 Corner of Sec. 31 Township 34 Range 24

CORNER HISTORY:

December 7, 1971 - Set cast iron monument flush using area resurvey. Established ties to monument. Set sign and post 1/2' north of monument.

June 18, 1974 - Found cast iron monument and updated ties.

May 5, 1977 - Found cast iron monument and updated ties.

August 28, 1980 - Found cast iron monument and updated ties.

July 27, 1984 - Found cast iron monument and updated ties.

July 28, 1992 - Found cast iron monument and updated ties.

May 15, 1997 - Found cast iron monument and updated ties.

April 15, 2003 - Established NAD 1983 (1996 adj.) Anoka County project coordinates by static GPS methods.

March 25, 2014 - Found cast iron monument and updated ties.

July 1, 2020 - Found cast iron monument up 0.2'±. Verified position by VRS GPS methods. Updated ties.

October 27, 2022 - Found cast iron monument up 0.2'±, verified position by VRS GPS method and updated ties.