

CERTIFICATE OF LOCATION OF GOVERNMENT CORNER

County of Anoka

State of Minnesota

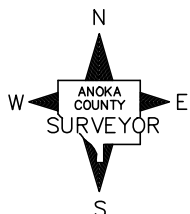
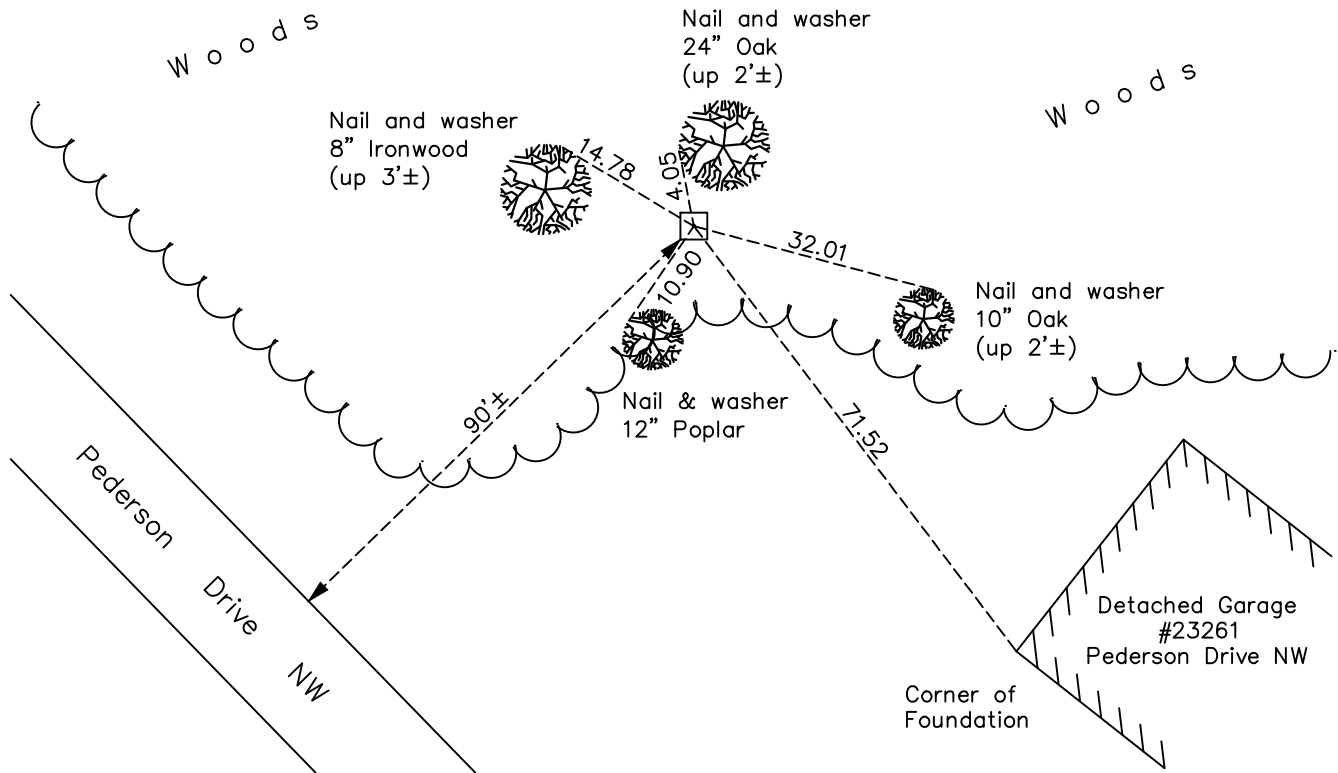
Center Corner of Sec. 31 Township 34 Range 24

On the 2nd day of September, 1965, the described corner was evidenced by a sandstone monument used by D. Pepper

and to perpetuate the location of said corner, at the exact location thereof, a permanent marker was placed consisting of a sandstone monument with a drill hole in the center. Steel fence post 1'± northeast of monument.

AND on the 23rd day of June, 2022, said permanent marker was found up 0.3'± and verified position by VRS GPS methods. Updated ties.

Updated reference ties are as shown below.



Revision Date

7/1/2022

N.A.D. 1983 Coordinates
(1996 Adjustment)

County Project Coordinates

Northing 230063.8013

Easting 471381.0297

Date 2/23/2021

I hereby certify that this United States public land survey monument record is correct and complete to the best of my knowledge and belief.

David Zieglmeier Date 1/18/23

David M. Zieglmeier, Anoka County Surveyor

Minnesota License Number 46179

HISTORY OF GOVERNMENT CORNER

Page No. 36

County of Anoka

State of Minnesota

Center Corner of Sec. 31 Township 34 Range 24

CORNER HISTORY:

September 30, 1963 - Donn Pepper found a sandstone monument at fence corner. Updated ties.

September 2, 1965 - Found sandstone monument used by Donn Pepper up 0.3'±. Updated ties.

June 30, 1970 - Found sandstone monument up 0.2'± and updated ties.

June 18, 1974 - Found sandstone monument and updated ties.

May 5, 1977 - Found sandstone monument and updated ties.

August 28, 1980 - Found sandstone monument and updated ties.

July 30, 1984 - Found sandstone monument with a drill hole in the center. Updated ties.

June 16, 1987 - Found sandstone monument and updated ties.

July 24, 1992 - Found sandstone monument and updated ties.

July 17, 1997 - Found sandstone monument and updated ties.

February 23, 2021 - Found sandstone monument and established NAD 1983 (1996 adj.) Anoka County project coordinates by static GPS methods.

June 23, 2022 - Found sandstone monument up 0.3'±. Verified position by VRS GPS methods. Updated ties.