

CERTIFICATE OF LOCATION OF GOVERNMENT CORNER

County of Anoka

State of Minnesota

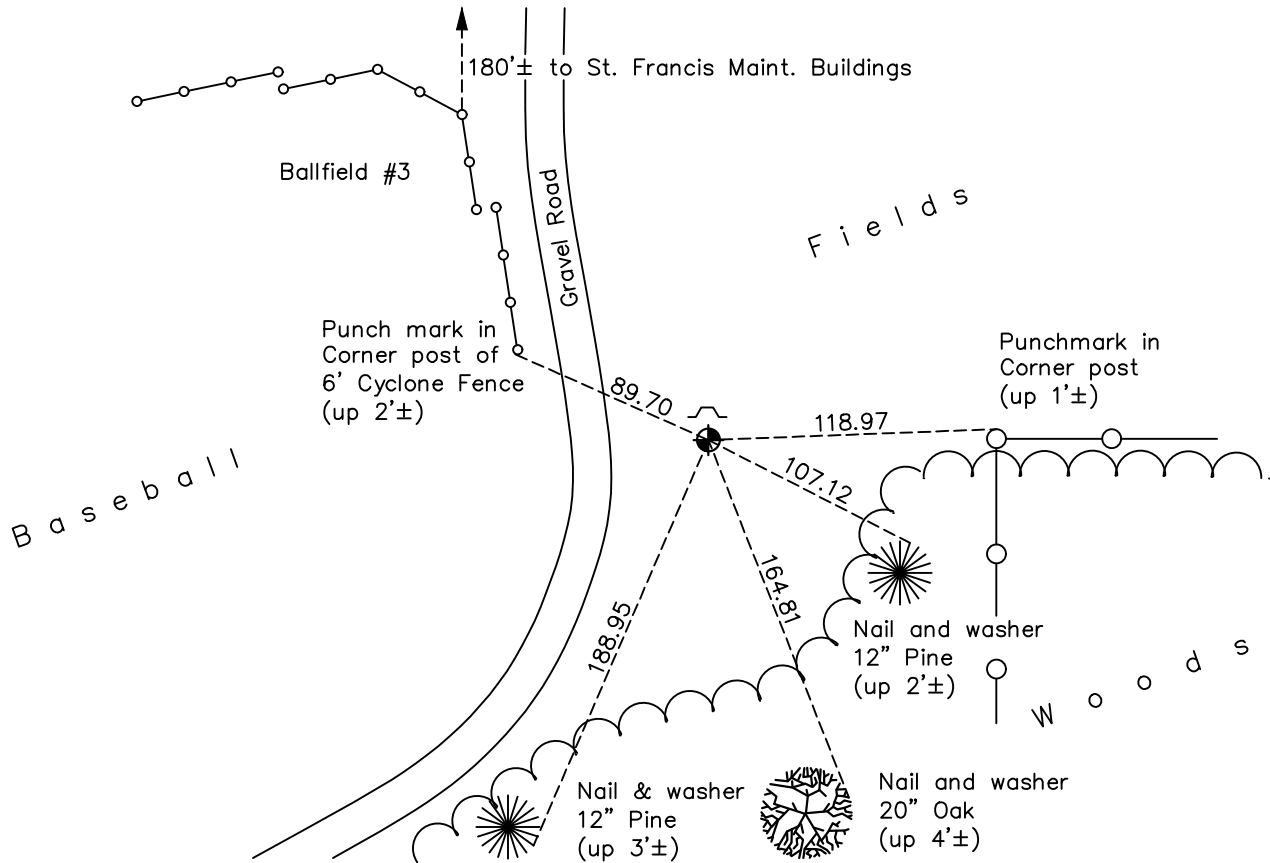
East 1/4 Corner of Sec. 32 Township 34 Range 24

On the 20th day of July, 1970, the described corner was evidenced by a 1" iron pipe

and to perpetuate the location of said corner, at the exact location thereof, a permanent marker was placed consisting of a cast iron monument

AND on the 27th day of October, 2022, said permanent marker was found down 0.5'± with a sign and post to the north side and the ties were updated

Updated reference ties are as shown below.



Revision Date

1/31/2023

N.A.D. 1983 Coordinates
(1996 Adjustment)

County Project Coordinates	
Northing	<u>230073.4458</u>
Easting	<u>479261.6006</u>
Date	<u>8/15/01</u>

I hereby certify that this United States public land survey monument record is correct and complete to the best of my knowledge and belief.

David Zieglmeier Date 3/1/23

David Zieglmeier Anoka County Surveyor
Minnesota License Number 46179

HISTORY OF GOVERNMENT CORNER

Page No. 40

County of Anoka

State of Minnesota

East 1/4 Corner of Sec. 32 Township 34 Range 24

CORNER HISTORY:

November 7, 1963 - Found 1" iron pipe down 0.3'± and updated ties.

September 3, 1965 - Found iron pipe and updated ties.

July 20, 1970 - Replaced iron pipe with cast iron monument flush. Updated ties.

June 10, 1974 - Found cast iron monument and updated ties.

May 5, 1977 - Found cast iron monument and updated ties.

August 22, 1980 - Found cast iron monument and updated ties.

July 26, 1984 - Found cast iron monument and updated ties.

June 12, 1987 - Found cast iron monument and updated ties.

August 11, 1989 - Found cast iron monument and updated ties prior to construction.

November 22, 1989 - Reset cast iron monument w/sign and post on north side after construction. Updated ties.

July 23, 1992 - Found cast iron monument and updated ties.

July 18, 1997 - Found cast iron monument and updated ties.

August 15, 2001 - Established NAD 1983 (1996 adj.) Anoka County project coordinates by static GPS methods.

April 7, 2014 - Found cast iron monument down 0.5'±. Verified position by VRS GPS methods. Updated ties.

July 1, 2020 - Found cast iron monument down 0.5'±. Verified position by VRS GPS methods. Updated ties.

October 27, 2022 - Found cast iron monument down 0.5'±, verified position by VRS GPS method, updated ties.