

CERTIFICATE OF LOCATION OF GOVERNMENT CORNER

County of Anoka

State of Minnesota

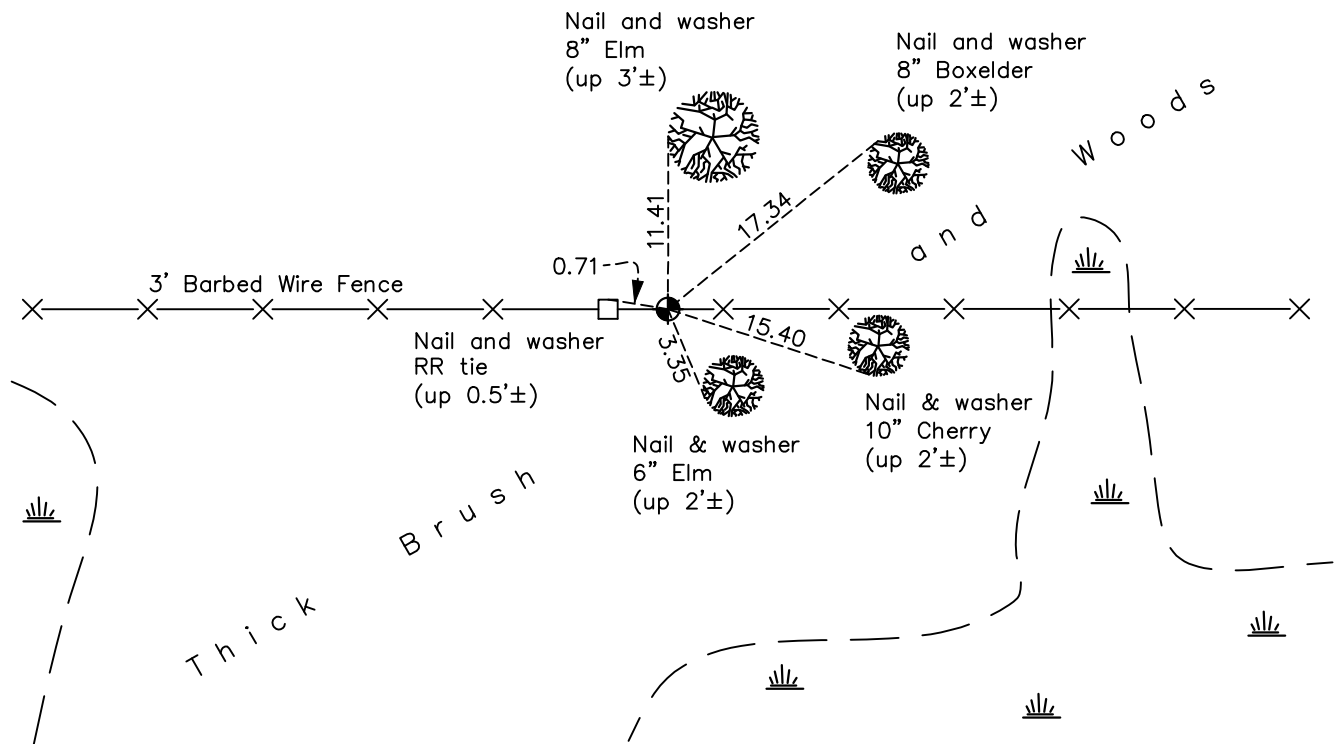
East 1/4 Corner of Sec. 33 Township 34 Range 24

On the 30th day of July, 1964, the described corner was evidenced by area resurvey

and to perpetuate the location of said corner, at the exact location thereof, a permanent marker was placed consisting of a cast iron monument

AND on the 17th day of November, 2022, said permanent marker was found flush and the ties were updated

Updated reference ties are as shown below.



Revision Date
 1/31/2023

N.A.D. 1983 Coordinates
(1996 Adjustment)

County Project Coordinates	
Northing	<u>230068.6848</u>
Easting	<u>484532.5920</u>
Date	<u>4/22/03</u>

I hereby certify that this United States public land survey monument record is correct and complete to the best of my knowledge and belief.

David Zieglmeier Date 3/1/23

David Zieglmeier Anoka County Surveyor
 Minnesota License Number 46179

HISTORY OF GOVERNMENT CORNER

County of Anoka

State of Minnesota

East 1/4 Corner of Sec. 33 Township 34 Range 24

CORNER HISTORY:

July 30, 1964 - Set cast iron monument up 0.2'± using area resurvey. Established ties to monument.

September 3, 1965 - Found cast iron monument and updated ties.

July 20, 1970 - Found cast iron monument and updated ties.

June 18, 1974 - Found cast iron monument and updated ties.

May 5, 1977 - Found cast iron monument and updated ties.

August 26, 1980 - Found cast iron monument and updated ties.

July 30, 1984 - Found cast iron monument and updated ties.

June 15, 1987 - Found cast iron monument and updated ties.

July 28, 1992 - Found cast iron monument and updated ties.

April 17, 2003 - Found cast iron monument and updated ties.

April 22, 2003 - Established NAD 1983 (1996 adj.) Anoka County project coordinates by static GPS methods.

April 15, 2014 - Found cast iron monument and updated ties.

September 10, 2020 - Found cast iron monument flush. Verified position by VRS GPS methods. Updated ties.

November 17, 2022 - Found cast iron monument flush, verified position by VRS GPS method and updated ties.