

CERTIFICATE OF LOCATION OF GOVERNMENT CORNER

County of Anoka

State of Minnesota

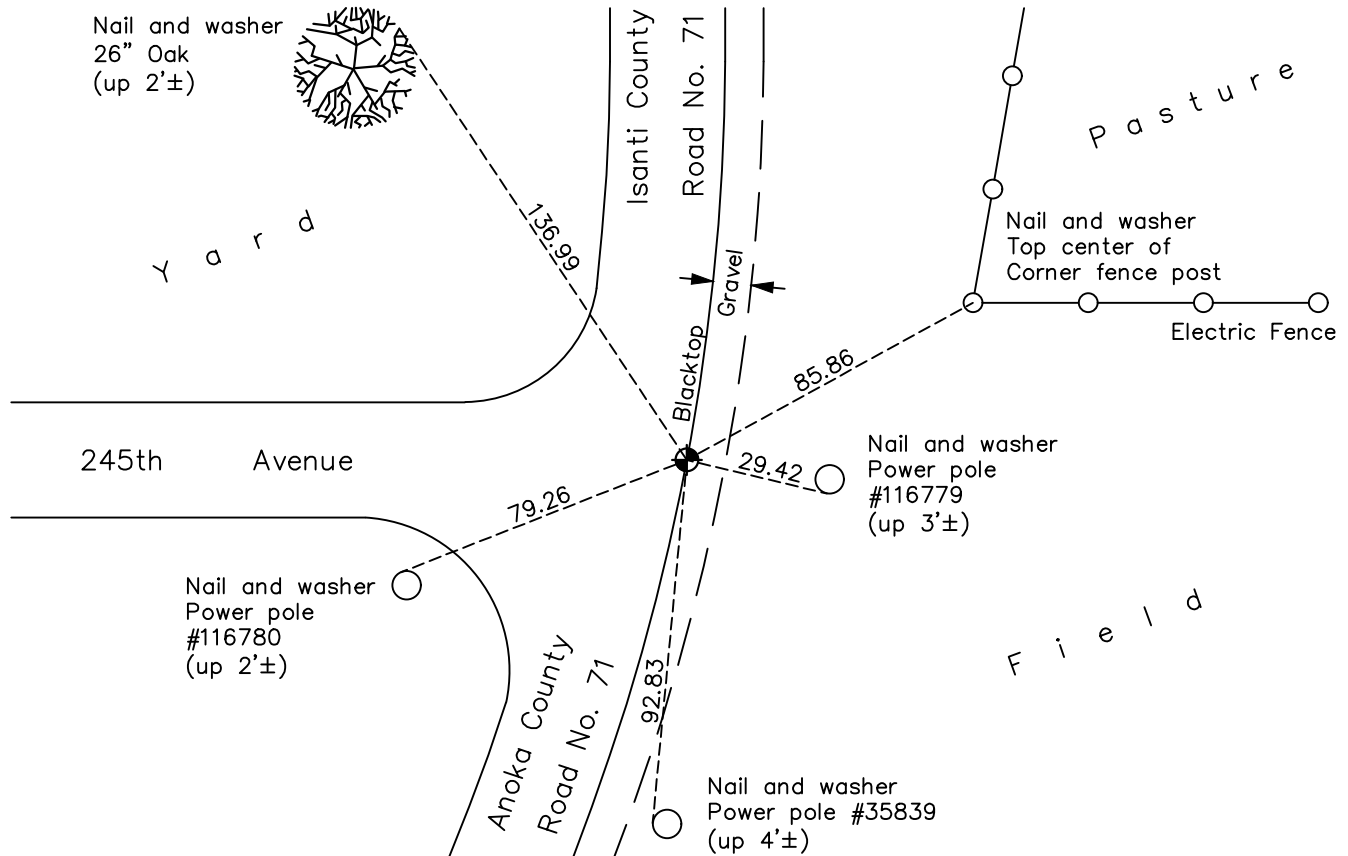
Northwest Corner of Sec. 25 Township 34 Range 25

On the 25th day of July, 1974, the described corner was evidenced by an Isanti County cast iron monument

and to perpetuate the location of said corner, at the exact location thereof, a permanent marker was placed consisting of an Anoka County cast iron monument on top of Isanti County monument

AND on the 2nd day of June, 2023, said permanent marker was found broken under roadway.
Reset CIM, set flush, to published coordinates verifying with historical ties. Updated ties after setting.

Updated reference ties are as shown below.



Revision Date
6/13/2023

N.A.D. 1983 Coordinates
 (1996 Adjustment)

| County Project Coordinates | |
|----------------------------|--------------------|
| Northing | <u>238042.6720</u> |
| Easting | <u>463445.5923</u> |
| Date | <u>4/29/03</u> |

I hereby certify that this United States public land survey monument record is correct and complete to the best of my knowledge and belief.

David Zieglmeier Date 7/19/23

David Zieglmeier Anoka County Surveyor
 Minnesota License Number 46179

HISTORY OF GOVERNMENT CORNER

Page No. 46

County of Anoka

State of Minnesota

Northwest Corner of Sec. 25 Township 34 Range 25

CORNER HISTORY:

July 25, 1974 - Found Isanti County cast iron monument down 3'±. Updated ties. Set Anoka County cast iron monument on top flush with road.

May 6, 1977 - Found cast iron monument and updated ties.

August 26, 1980 - Found cast iron monument and updated ties.

July 26, 1984 - Found cast iron monument and updated ties.

June 11, 1987 - Found cast iron monument and updated ties.

July 23, 1992 - Found cast iron monument and updated ties.

July 16, 1997 - Found cast iron monument and updated ties.

April 29, 2003 - Found cast iron monument and updated ties. Established NAD 1983 (1996 adj.) Anoka County project coordinates by static GPS methods.

March 28, 2014 - Found cast iron monument. Verified position by VRS GPS methods. Updated ties.

July 23, 2020 - Found cast iron monument flush. Verified position by VRS GPS methods. Updated ties.

June 2, 2023 - Found cast iron monument broken, under roadway. Removed broken CIM and reset with a new CIM set flush with ACS RTK GPS method to published coordinates and verified with historical ties. Updated ties after setting.