

CERTIFICATE OF LOCATION OF GOVERNMENT CORNER

County of Anoka

State of Minnesota

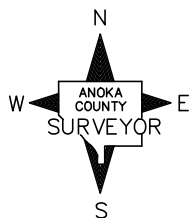
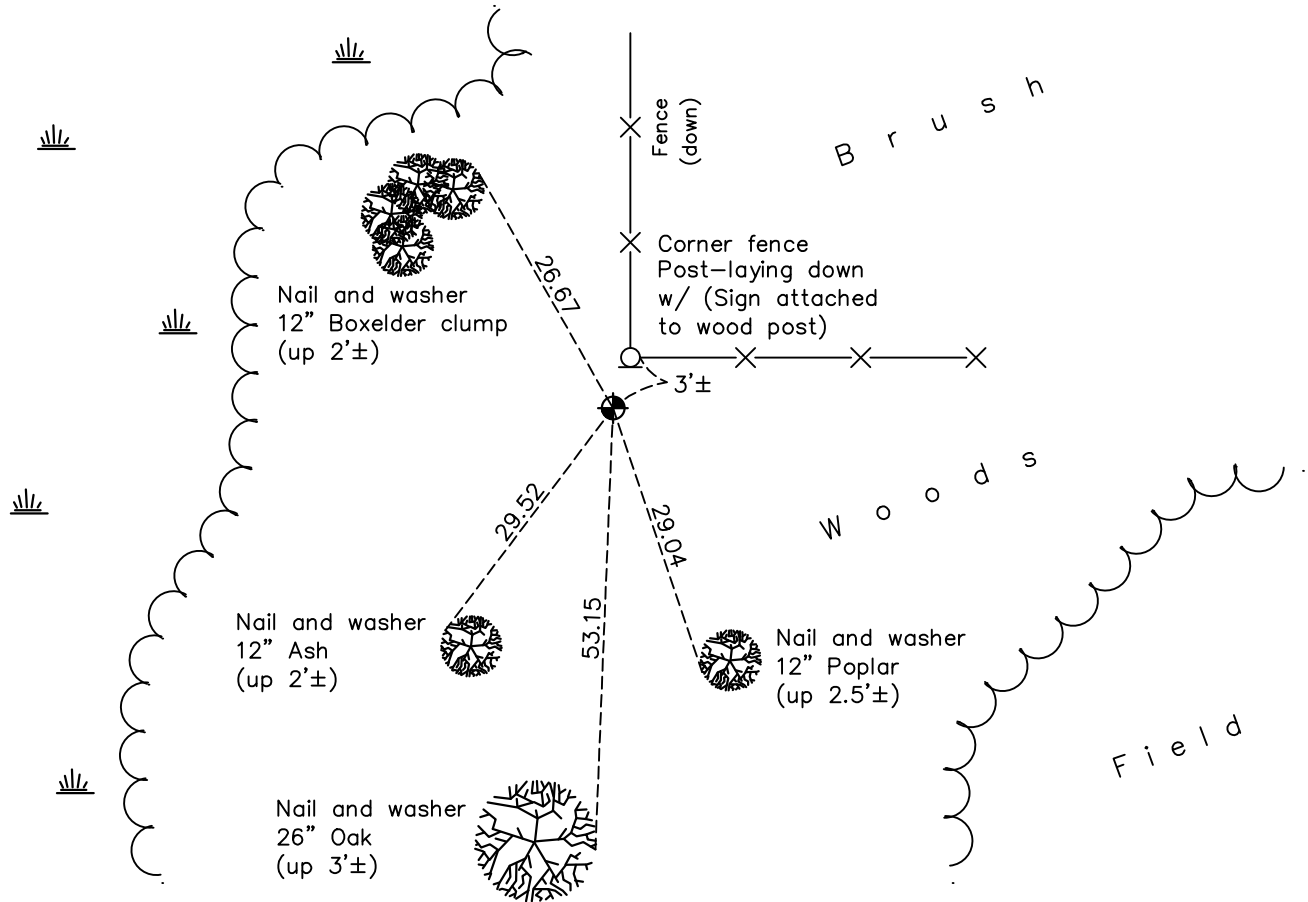
Northwest Corner of Sec. 26 Township 34 Range 25

On the 6th day of August, 1976, the described corner was evidenced by area resurvey

and to perpetuate the location of said corner, at the exact location thereof, a permanent marker was placed consisting of a cast iron monument

AND on the 16th day of November, 2022, said permanent marker was found up 0.4'± and the ties were updated

Updated reference ties are as shown below.



N.A.D. 1983 Coordinates
(1996 Adjustment)

County Project Coordinates

Northing 238050.0184

Easting 458161.8110

Date 5/01/03

I hereby certify that this United States public land survey monument record is correct and complete to the best of my knowledge and belief.

David Zieglmeier Date 3/1/23

David Zieglmeier Anoka County Surveyor

Minnesota License Number 46179

Revision Date

1/31/2023

HISTORY OF GOVERNMENT CORNER

County of Anoka

State of Minnesota

Northwest Corner of Sec. 26 Township 34 Range 25

CORNER HISTORY:

August 6, 1976 - Set cast iron monument flush using area resurvey. Established ties to monument.

May 6, 1977 - Found cast iron monument and updated ties.

June 3, 1981 - Found cast iron monument and updated ties.

August 9, 1984 - Found cast iron monument and updated ties.

June 16, 1987 - Found cast iron monument and updated ties.

April 30, 2003 - Found cast iron monument and updated ties.

May 1, 2003 - Established NAD 1983 (1996 adj.) Anoka County project coordinates by static GPS methods.

April 2, 2014 - Found cast iron monument up 0.4'± and updated ties.

September 15, 2020 - Found cast iron monument up 0.4'±. Verified position by VRS GPS methods. Updated ties

November 16, 2022 - Found cast iron monument up 0.4'±, verified position by VRS GPS method, updated ties.