

CERTIFICATE OF LOCATION OF GOVERNMENT CORNER

County of Anoka

State of Minnesota

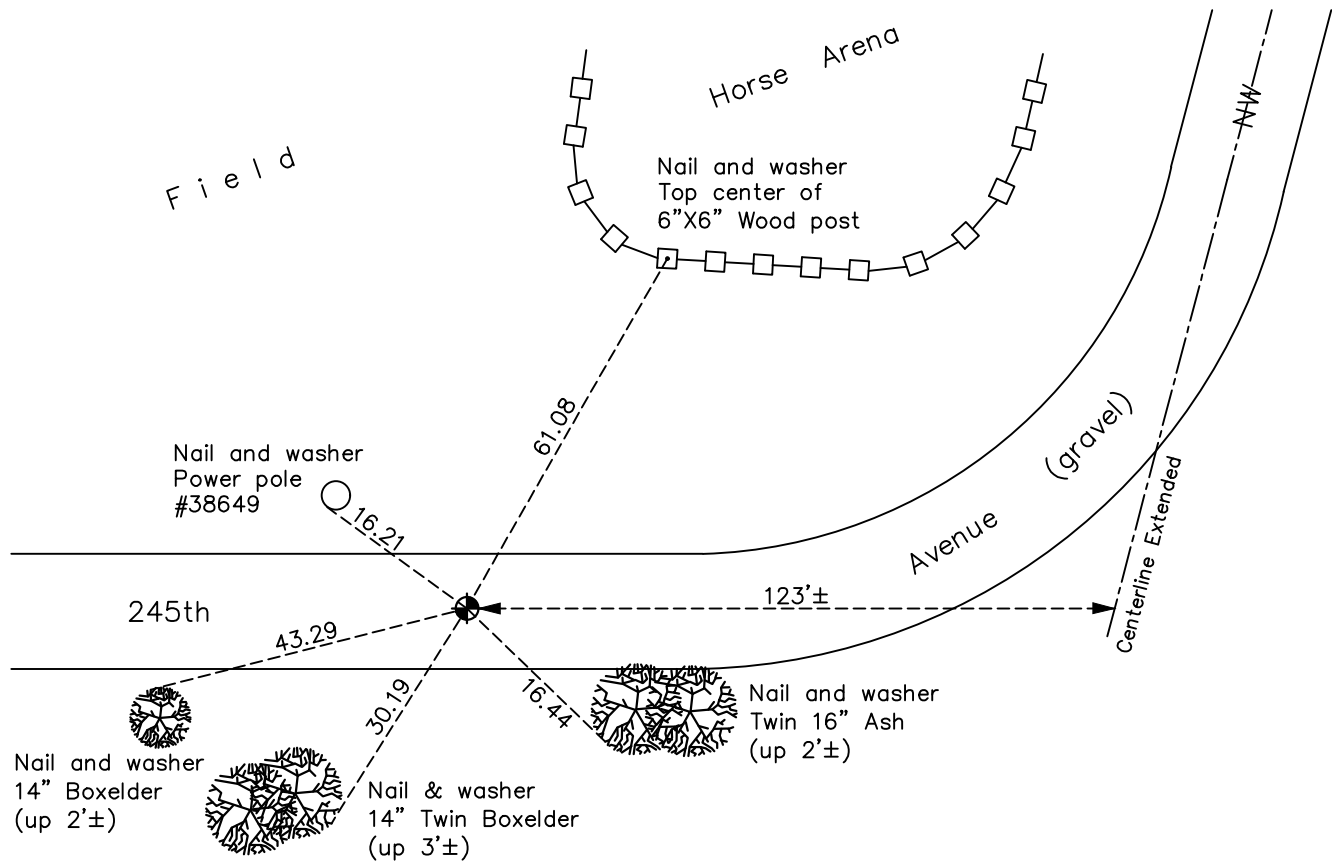
North 1/4 Corner of Sec. 27 Township 34 Range 25

On the 31st day of August, 1976, the described corner was evidenced by area resurvey

and to perpetuate the location of said corner, at the exact location thereof, a permanent marker was placed consisting of a cast iron monument

AND on the 28th day of October, 2022, said permanent marker was found down 0.4'± and the ties were updated

Updated reference ties are as shown below.



Revision Date
 1/31/2023

N.A.D. 1983 Coordinates
 (1996 Adjustment)

County Project Coordinates	
Northing	238011.4496
Easting	455621.1518
Date	4/29/03

I hereby certify that this United States public land survey monument record is correct and complete to the best of my knowledge and belief.
David Zieglmeier Date 3/1/23
 David Zieglmeier Anoka County Surveyor
 Minnesota License Number 46179

HISTORY OF GOVERNMENT CORNER

Page No. 49

County of Anoka

State of Minnesota

North 1/4 Corner of Sec. 27 Township 34 Range 25

CORNER HISTORY:

August 31, 1976 - Set cast iron monument down 0.5'± in centerline of field road using area resurvey. Established ties to monument.

May 6, 1977 - Found cast iron monument and updated ties.

August 27, 1980 - Found cast iron monument and updated ties.

July 24, 1984 - Found cast iron monument and updated ties.

June 16, 1987 - Found cast iron monument and updated ties.

July 20, 1992 - Found cast iron monument and updated ties.

July 18, 1997 - Found cast iron monument and updated ties.

April 29, 2003 - Established NAD 1983 (1996 adj.) Anoka County project coordinates by static GPS methods.

March 31, 2014 - Found cast iron monument down 0.5'±. Verified position by VRS GPS methods. Updated ties.

September 15, 2020 - Found cast iron monument down 0.4'±. Verified position by VRS GPS methods. Updated ties

October 28, 2022 - Found cast iron monument down 0.4'±, verified position by VRS GPS method, updated ties.