

# CERTIFICATE OF LOCATION OF GOVERNMENT CORNER

County of Anoka

State of Minnesota

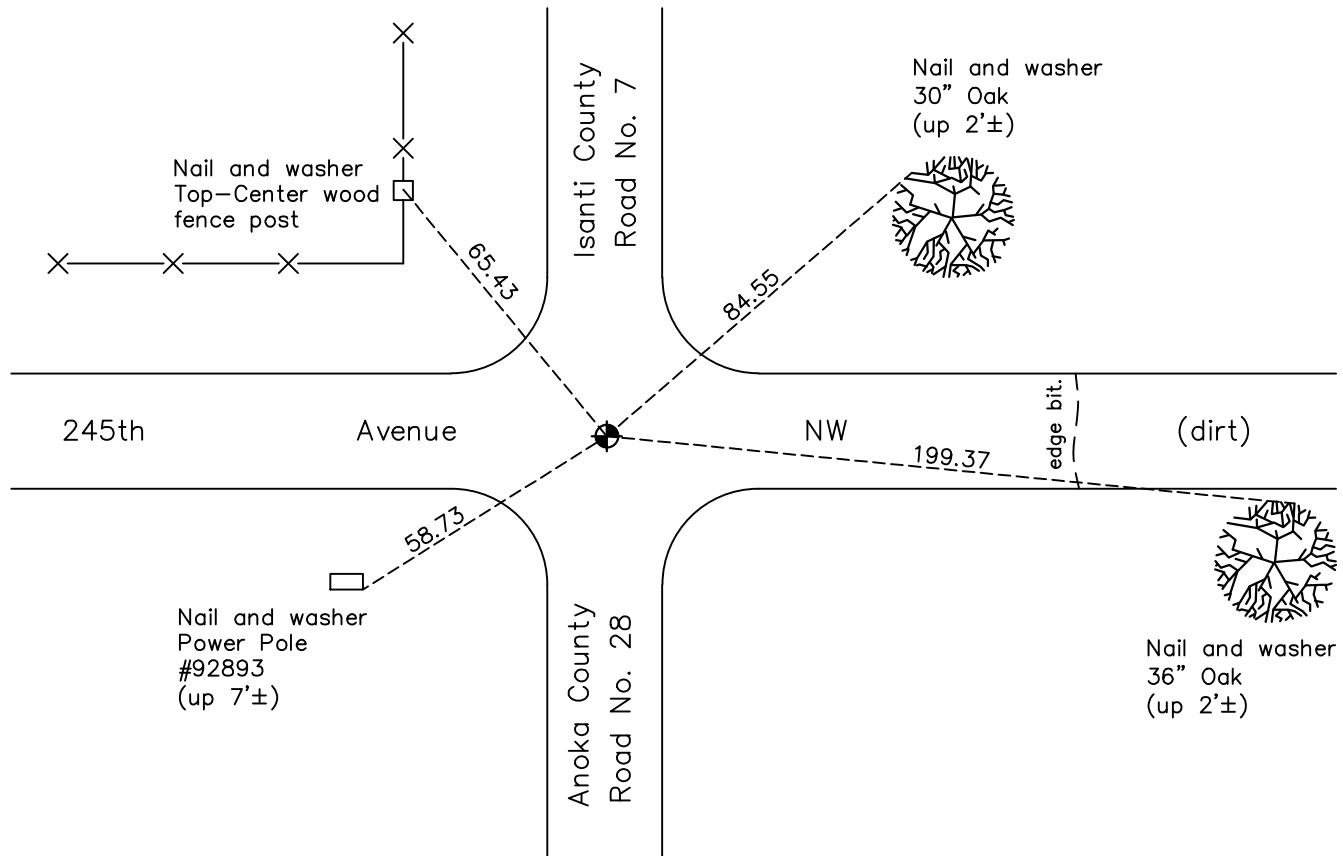
## Northwest Corner of Sec. 27 Township 34 Range 25

On the 22nd day of July, 1966, the described corner was evidenced by stone and well point found by N.C. Hoium and Associates

and to perpetuate the location of said corner, at the exact location thereof, a permanent marker was placed consisting of an aluminum cap on rebar stamped "Isanti County Land Corner"

AND on the 4th day of November, 2022, said permanent marker was found flush and the ties were updated

Updated reference ties are as shown below.



Revision Date

1/31/2023

N.A.D. 1983 Coordinates  
(1996 Adjustment)

County Project Coordinates	
Northing	<u>238047.1325</u>
Easting	<u>453009.0722</u>
Date	<u>4/29/03</u>

I hereby certify that this United States public land survey monument record is correct and complete to the best of my knowledge and belief.

David Zieglmeier Date 3/1/23

David Zieglmeier Anoka County Surveyor  
Minnesota License Number 46179

# HISTORY OF GOVERNMENT CORNER

Page No. 50

County of Anoka

State of Minnesota

## Northwest Corner of Sec. 27 Township 34 Range 25

### **CORNER HISTORY:**

May 23, 1961 - Found large stone with point up and an old well point 3'± south of stone and down 2'±. Updated ties to both.

September 2, 1965 - Found stone and well point and updated ties.

July 22, 1966 - N.C. Hoium and Associates set an Isanti County monument using ties.

July 1, 1970 - Found Isanti County cast iron monument down 0.1'±. Updated ties.

June 5, 1974 - Found Isanti County cast iron monument and updated ties.

May 6, 1977 - Found Isanti County cast iron monument and updated ties.

August 27, 1980 - Found Isanti County cast iron monument and updated ties.

April 15, 1983 - Found cast iron monument broken and replaced with new cast iron monument. Updated ties.

July 24, 1984 - Found Isanti County cast iron monument and updated ties.

September 14, 1990 - Replaced cast iron monument after construction. Updated ties.

July 20, 1992 - Found cast iron monument and updated ties.

July 16, 1997 - Found cast iron monument and updated ties.

April 29, 2003 - Found cast iron monument and updated ties. Established NAD 1983 (1996 adj.) Anoka County project coordinates by static GPS methods.

March 27, 2014 - Found aluminum cap on rebar stamped "Isanti County Land Corner". Verified position by VRS GPS methods. Updated ties.

September 15, 2020 - Found aluminum cap on rebar stamped "Isanti County Land Corner". Verified position by VRS GPS methods. Updated ties.

November 4, 2022 - Found aluminum cap on rebar stamped "Isanti County Land Corner", verified position by VRS GPS method and the ties were updated.