

CERTIFICATE OF LOCATION OF GOVERNMENT CORNER

County of Anoka

State of Minnesota

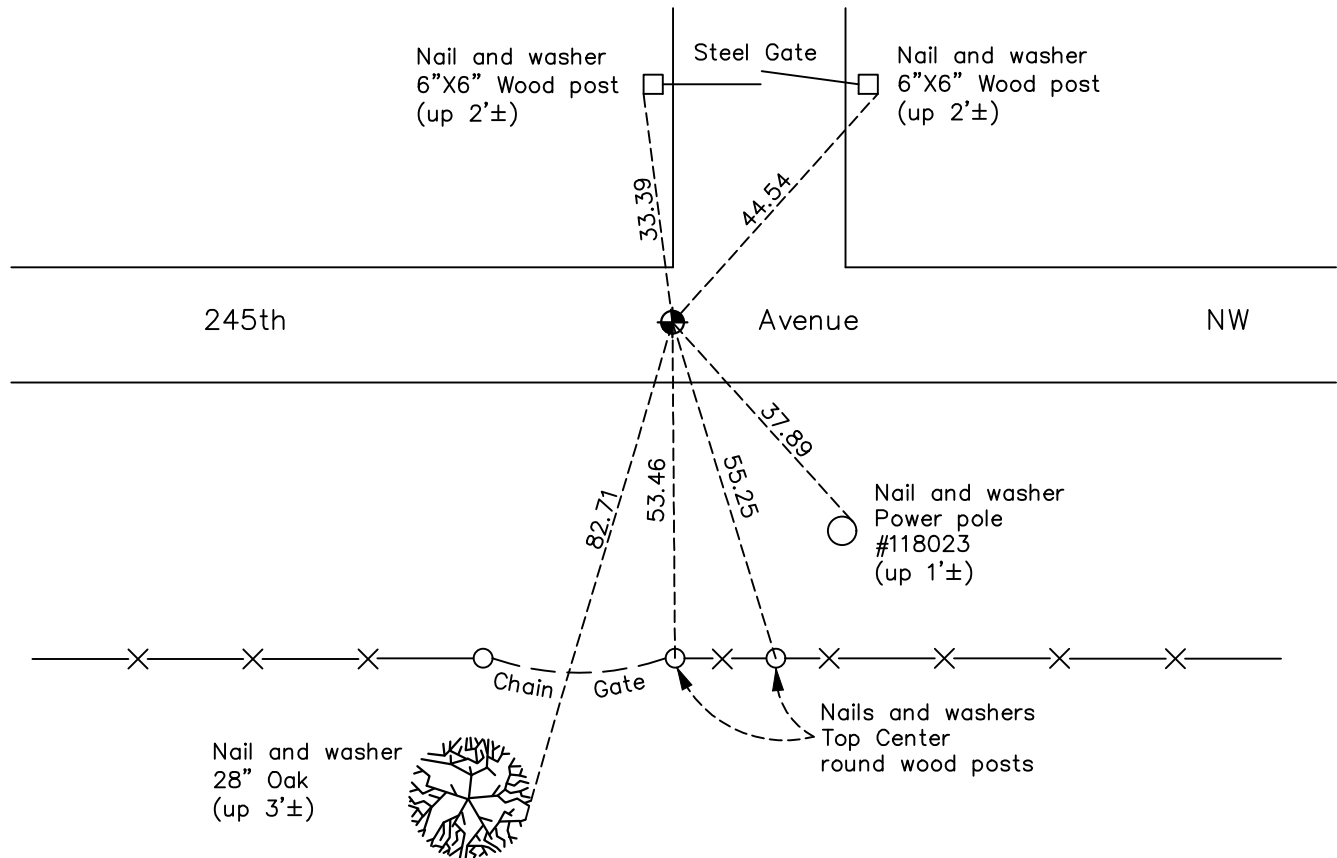
North $\frac{1}{4}$ Corner of Sec. 28 Township 34 Range 25

On the 21st day of May, 1968, the described corner was evidenced by area resurvey

and to perpetuate the location of said corner, at the exact location thereof, a permanent marker was placed consisting of a cast iron monument

AND on the 4th day of November, 2022, said permanent marker was found flush and the ties were updated

Updated reference ties are as shown below.



Revision Date

1/31/2023

N.A.D. 1983 Coordinates
(1996 Adjustment)

County Project Coordinates	
Northing	<u>238106.2315</u>
Easting	<u>450376.9075</u>
Date	<u>5/01/03</u>

I hereby certify that this United States public land survey monument record is correct and complete to the best of my knowledge and belief.

David Zieglmeier Date 3/1/23

David Zieglmeier Anoka County Surveyor
Minnesota License Number 46179

HISTORY OF GOVERNMENT CORNER

Page No. 51

County of Anoka

State of Minnesota

North 1/4 Corner of Sec. 28 Township 34 Range 25

CORNER HISTORY:

May 21, 1968 - Set cast iron monument down 0.5'± using area resurvey. Established ties to monument.

July 1, 1970 - Found cast iron monument and updated ties.

June 13, 1974 - Found cast iron monument and updated ties.

May 6, 1977 - Found cast iron monument and updated ties.

May 29, 1981 - Found cast iron monument and updated ties.

July 24, 1984 - Found cast iron monument and updated ties.

June 16, 1987 - Found cast iron monument and updated ties.

July 24, 1994 - Found cast iron monument and updated ties.

July 18, 1997 - Found cast iron monument and updated ties.

April 29, 2003 - Found cast iron monument and updated ties.

May 1, 2003 - Established NAD 1983 (1996 adj.) Anoka County project coordinates by static GPS methods.

March 31, 2014 - Found cast iron monument. Verified position by VRS GPS methods. Updated ties.

September 15, 2020 - Found cast iron monument down 0.3'± and raised flush. Verified position by VRS GPS methods. Updated ties.

November 4, 2022 - Found cast iron monument flush, verified position by VRS GPS method and updated ties.