

CERTIFICATE OF LOCATION OF GOVERNMENT CORNER

County of Anoka

State of Minnesota

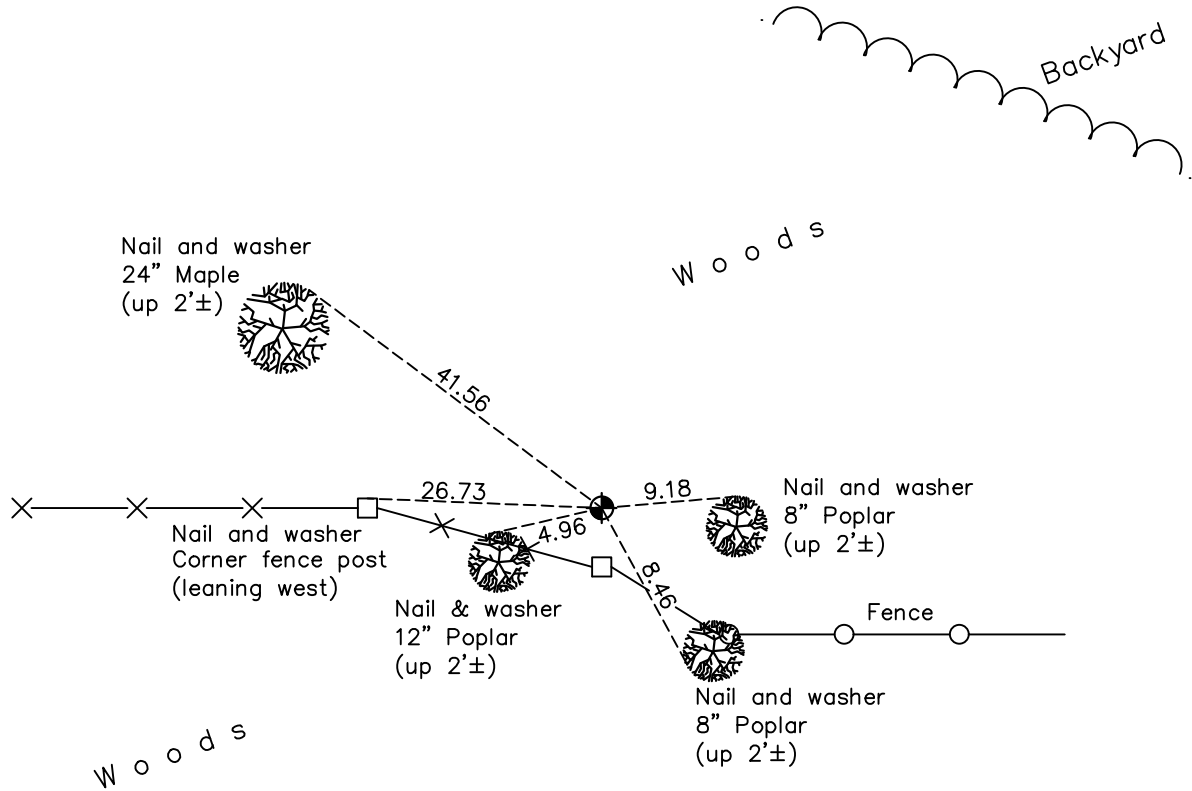
Northwest Corner of Sec. 28 Township 34 Range 25

On the 22nd day of May, 1968, the described corner was evidenced by area resurvey

and to perpetuate the location of said corner, at the exact location thereof, a permanent marker was placed consisting of a cast iron monument

AND on the 4th day of November, 2022, said permanent marker was found down 0.3'± and the ties were updated

Updated reference ties are as shown below.



Revision Date

1/31/2023

N.A.D. 1983 Coordinates
(1996 Adjustment)

County Project Coordinates	
Northing	<u>238166.5428</u>
Easting	<u>447702.4857</u>
Date	<u>5/12/03</u>

I hereby certify that this United States public land survey monument record is correct and complete to the best of my knowledge and belief.

David Zieglmeier Date 3/1/23

David Zieglmeier Anoka County Surveyor
Minnesota License Number 46179

HISTORY OF GOVERNMENT CORNER

Page No. 52

County of Anoka

State of Minnesota

Northwest Corner of Sec. 28 Township 34 Range 25

CORNER HISTORY:

May 22, 1968 - Set cast iron monument flush using area resurvey. Established ties to monument.

July 1, 1970 - Found cast iron monument and updated ties.

June 13, 1974 - Found cast iron monument and updated ties.

May 6, 1977 - Found cast iron monument and updated ties.

June 3, 1981 - Found cast iron monument and updated ties.

July 25, 1984 - Found cast iron monument and updated ties.

June 19, 1987 - Found cast iron monument and updated ties.

May 12, 2003 - Established NAD 1983 (1996 adj.) Anoka County project coordinates by static GPS methods.

May 9, 2014 - Found cast iron monument and updated ties.

September 15, 2020 - Found cast iron monument down 0.3'± and updated ties

November 4, 2022 - Found cast iron monument down 0.3'±, verified position by VRS GPS method, and updated ties.