

# CERTIFICATE OF LOCATION OF GOVERNMENT CORNER

County of Anoka

State of Minnesota

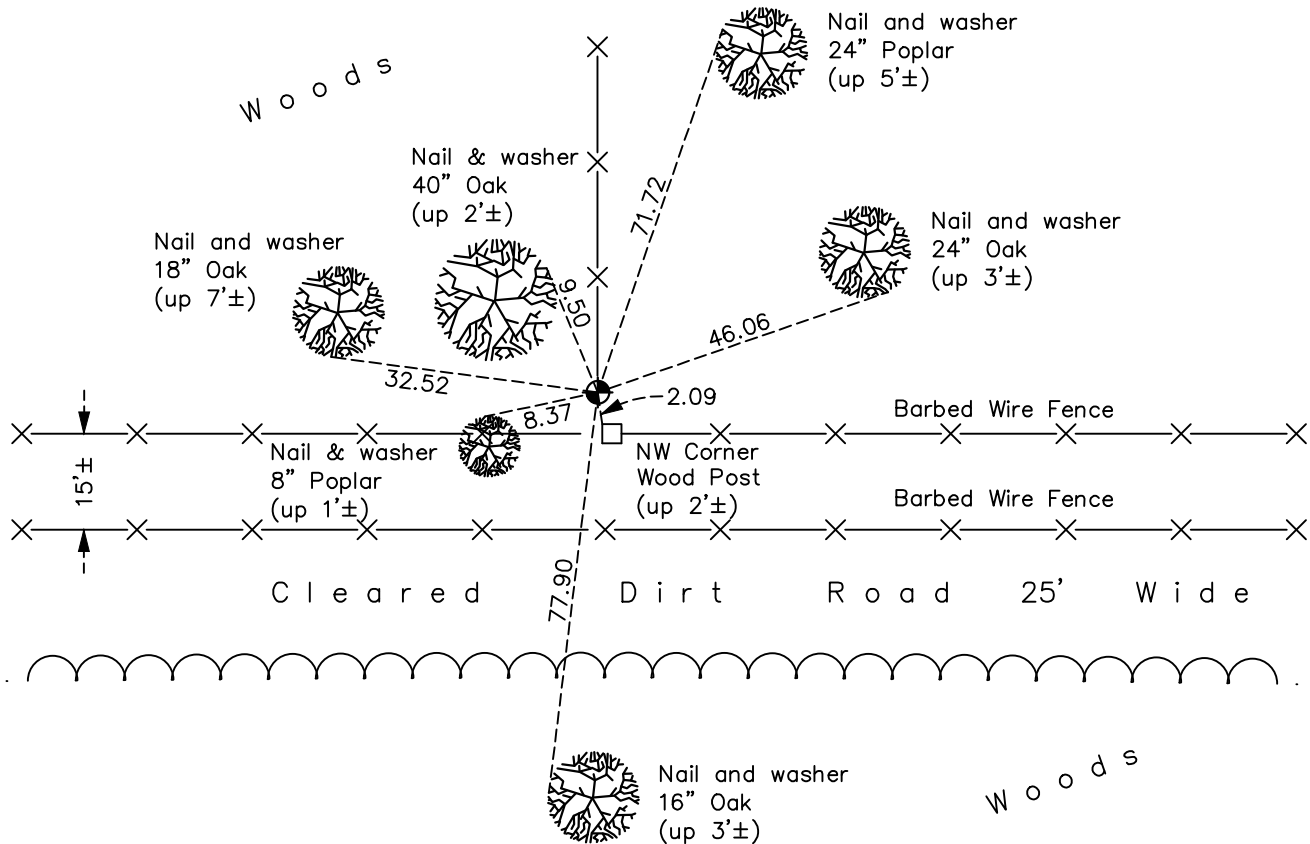
## North 1/4 Corner of Sec. 29 Township 34 Range 25

On the 18th day of June, 1968, the described corner was evidenced by area resurvey

and to perpetuate the location of said corner, at the exact location thereof, a permanent marker was placed consisting of a cast iron monument

AND on the 15th day of November, 2022, said permanent marker was found up 0.2'± and the ties were updated

Updated reference ties are as shown below.



Revision Date  
 1/31/2023

N.A.D. 1983 Coordinates  
 (1996 Adjustment)

County Project Coordinates	
Northing	238181.8530
Easting	445097.7021
Date	5/27/03

I hereby certify that this United States public land survey monument record is correct and complete to the best of my knowledge and belief.

*David Zieglmeier* Date 3/1/23

David Zieglmeier Anoka County Surveyor  
 Minnesota License Number 46179

# HISTORY OF GOVERNMENT CORNER

Page No. 53

County of Anoka

State of Minnesota

North 1/4 Corner of Sec. 29 Township 34 Range 25

## **CORNER HISTORY:**

June 18, 1968 - Set cast iron monument flush at fence corner using area resurvey. Established ties to monument.

June 12, 1974 - Found cast iron monument and updated ties.

May 6, 1977 - Found cast iron monument and updated ties.

June 5, 1981 - Found cast iron monument and updated ties.

July 24, 1984 - Found cast iron monument and updated ties.

June 19, 1987 - Found cast iron monument and updated ties.

December 18, 1991 - Found cast iron monument and updated ties.

May 27, 2003 - Established NAD 1983 (1996 adj.) Anoka County project coordinates by static GPS methods.

May 9, 2014 - Found cast iron monument up 0.2'± and updated ties.

September 17, 2020 - Found cast iron monument up 0.2' ± and updated ties

November 15, 2022 - Found cast iron monument up 0.2'±, verified position by VRS GPS method, updated ties.