

CERTIFICATE OF LOCATION OF GOVERNMENT CORNER

County of Anoka

State of Minnesota

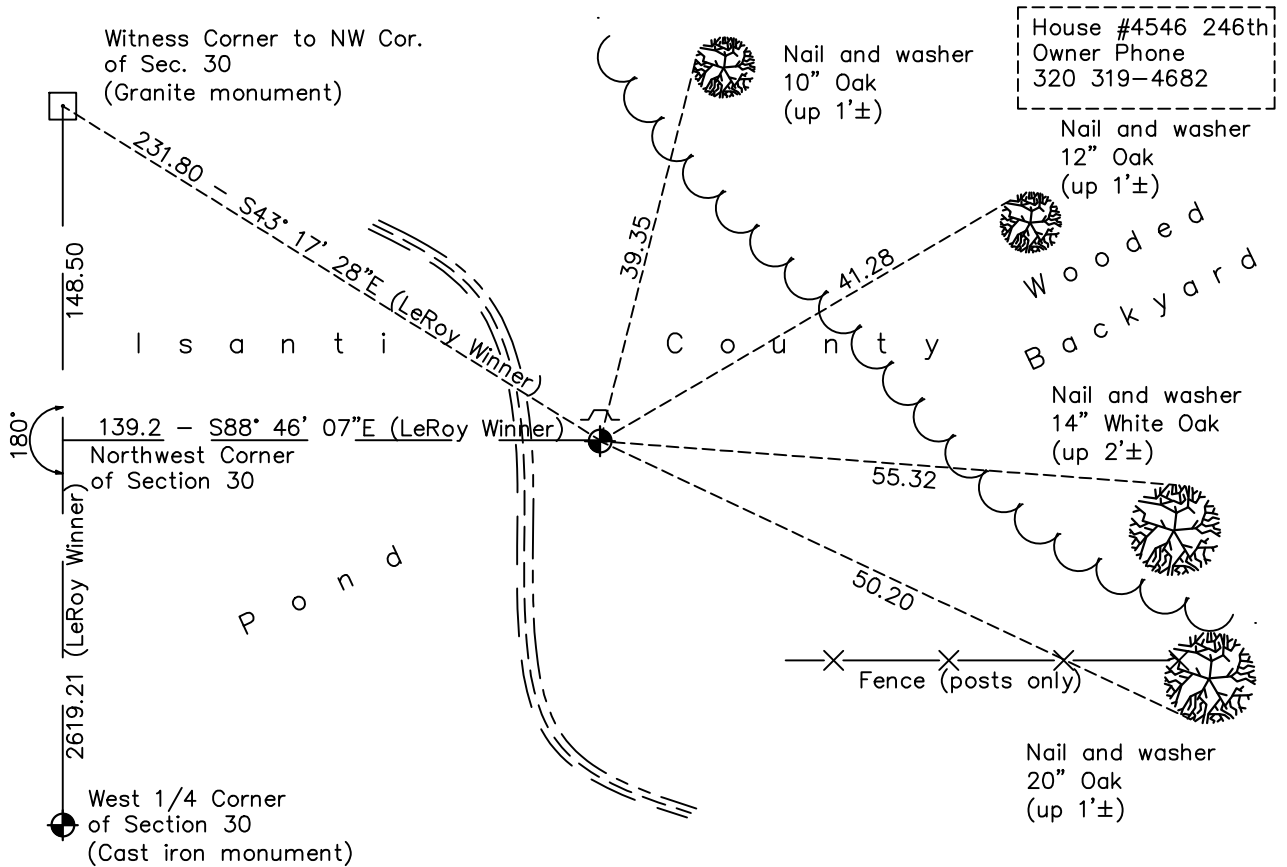
Witness Corner of Sec. 30 Township 34 Range 25
(On north line of section)

On the 7th day of July, 1969, the described corner was evidenced by a cast iron
monument

and to perpetuate the location of said corner, at the exact location thereof, a permanent marker
was placed consisting of the same cast iron monument

AND on the 18th day of November, 2022, said permanent marker was found flush and the
ties were updated. A sign and post is on the north side of monument.

Updated reference ties are as shown below.



N.A.D. 1983 Coordinates
(1996 Adjustment)

County Project Coordinates

Northing 238378.4589

Easting 437622.9382

Date 1/20/05

I hereby certify that this United States public land survey monument record is correct and complete to the best of my knowledge and belief.

David Zieglmeier Date 3/1/23

David Zieglmeier Anoka County Surveyor

Minnesota License Number 46179

Revision Date

2/01/2023

HISTORY OF GOVERNMENT CORNER

Page No. 56

County of Anoka

State of Minnesota

Witness Corner of Sec. 30 Township 34 Range 25
(On north line of section)

CORNER HISTORY:

July 7, 1969 - Leroy Winner set an Anoka County cast iron monument on east side of swamp. Established ties to monument.

May 9, 1977 - Found cast iron monument and updated ties.

June 5, 1981 - Found cast iron monument and updated ties.

January 20, 2005 - Found cast iron monument and updated ties. Established NAD 1983 (1996 adj.) Anoka County project coordinates by static GPS methods.

July 31, 2014 - Found cast iron monument w/sign and post on the north side. Verified position by VRS GPS methods. Updated ties.

September 17, 2020 - Found cast iron monument and updated ties.

November 18, 2022 - Found cast iron monument flush, verified position by VRS GPS method and updated ties.