

CERTIFICATE OF LOCATION OF GOVERNMENT CORNER

County of Anoka

State of Minnesota

Witness Corner of Sec. 30 Township 34 Range 25

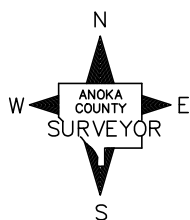
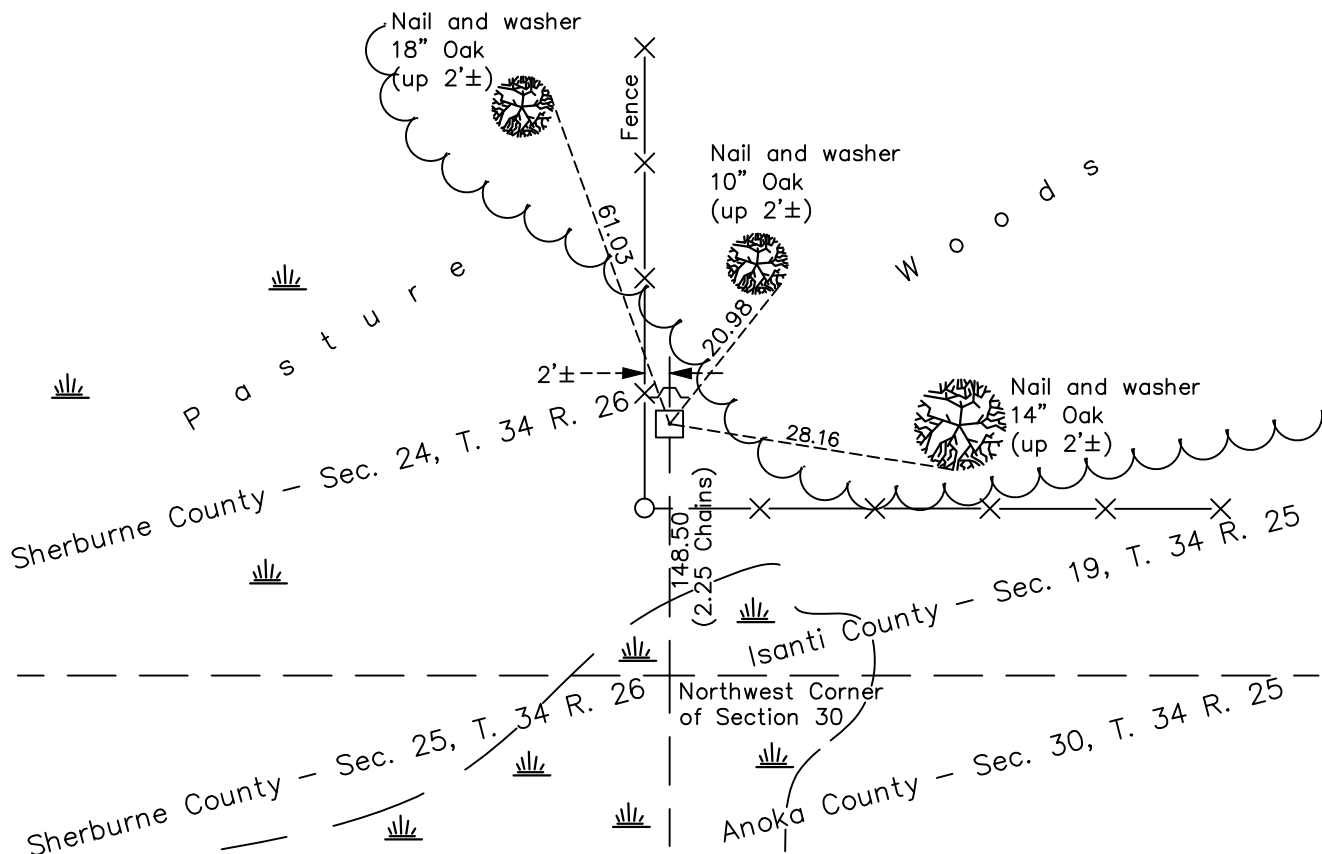
(Witness to NW Corner of section)

On the 14th day of January, 1964, the described corner was evidenced by a 6" square granite monument

and to perpetuate the location of said corner, at the exact location thereof, a permanent marker was placed consisting of the same granite monument

AND on the 18th day of November, 2022, said permanent marker was found up 0.5'± and leaning slightly north with sign/ post on the north side and the ties were updated

Updated reference ties are as shown below.



Revision Date

2/01/2023

N.A.D. 1983 Coordinates
(1996 Adjustment)

County Project Coordinates	
Northing	<u>238532.8267</u>
Easting	<u>437483.8518</u>
Date	<u>1/20/05</u>

I hereby certify that this United States public land survey monument record is correct and complete to the best of my knowledge and belief.

David Zieglmeier Date 3/1/23

David Zieglmeier Anoka County Surveyor
Minnesota License Number 46179

HISTORY OF GOVERNMENT CORNER

Page No. 57

County of Anoka

State of Minnesota

Witness Corner of Sec. 30 Township 34 Range 25
(Witness to NW Corner of section)

CORNER HISTORY:

January 14, 1964 - Found 6" square granite monument up 0.5'± that is 2.25 chains north of NW corner of section 30 T34 R25 per Sherburne County survey book #639-C (4/29/1901). Updated ties.

September 2, 1965 - Found 6" square granite monument and updated ties.

June 11, 1974 - Found 6" square granite monument and updated ties.

May 9, 1977 - Found 6" square granite monument and updated ties.

June 5, 1981 - Found 6" square granite monument and updated ties.

January 20, 2005 - Found 6" square granite monument and updated ties. Established NAD 1983 (1996 adj.) Anoka County project coordinates by static GPS methods.

July 31, 2014 - Found 6" square granite monument up 0.5'± and leaning slightly north. Verified position by VRS GPS methods. Updated ties.

September 17, 2020 - Found 6" square granite monument up 0.5'± and leaning slightly north. Verified position by VRS GPS methods. Updated ties.

November 18, 2022 - Found 6" square granite monument up 0.5'± and leaning slightly north. Verified position by VRS GPS method and updated the ties.