

CERTIFICATE OF LOCATION OF GOVERNMENT CORNER

County of Anoka

State of Minnesota

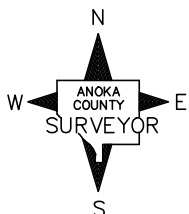
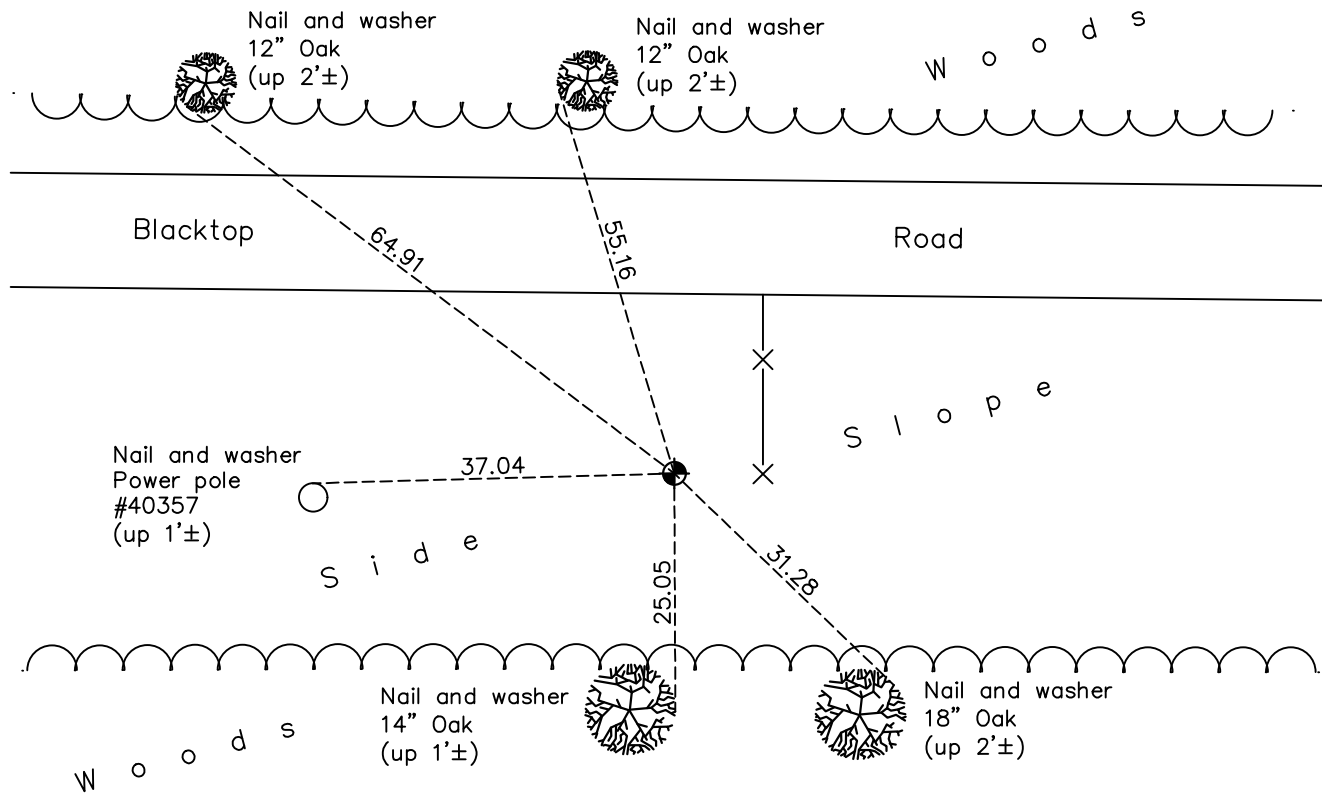
East 1/4 Corner of Sec. 29 Township 34 Range 25

On the 23rd day of July, 1968, the described corner was evidenced by area resurvey

and to perpetuate the location of said corner, at the exact location thereof, a permanent marker was placed consisting of a cast iron monument

AND on the 5th day of November, 2020, said permanent marker was found and the ties were updated

Updated reference ties are as shown below.



Revision Date

11/16/2020

N.A.D. 1983 Coordinates
(1996 Adjustment)

| County Project Coordinates | |
|----------------------------|--------------------|
| Northing | <u>235537.6033</u> |
| Easting | <u>447685.6964</u> |
| Date | <u>5/27/03</u> |

I hereby certify that this United States public land survey monument record is correct and complete to the best of my knowledge and belief.

David M Zieglmeier Date 7/26/21

David Zieglmeier Anoka County Surveyor
Minnesota License Number 46179

HISTORY OF GOVERNMENT CORNER

Page No. 61

County of Anoka

State of Minnesota

East 1/4 Corner of Sec. 29 Township 34 Range 25

CORNER HISTORY:

July 23, 1968 - Set spike using area resurvey 0.3'± west of tree being used as a corner fence post. Established ties to spike.

May 27, 2003 - Established NAD 1983 (1996 adj.) Anoka County project coordinates by static GPS methods.

April 9, 2014 - Found cast iron monument. Verified position by VRS GPS methods. Updated ties.

November 5, 2020 - Found cast iron monument and updated ties.