

# CERTIFICATE OF LOCATION OF GOVERNMENT CORNER

County of Anoka

State of Minnesota

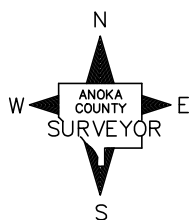
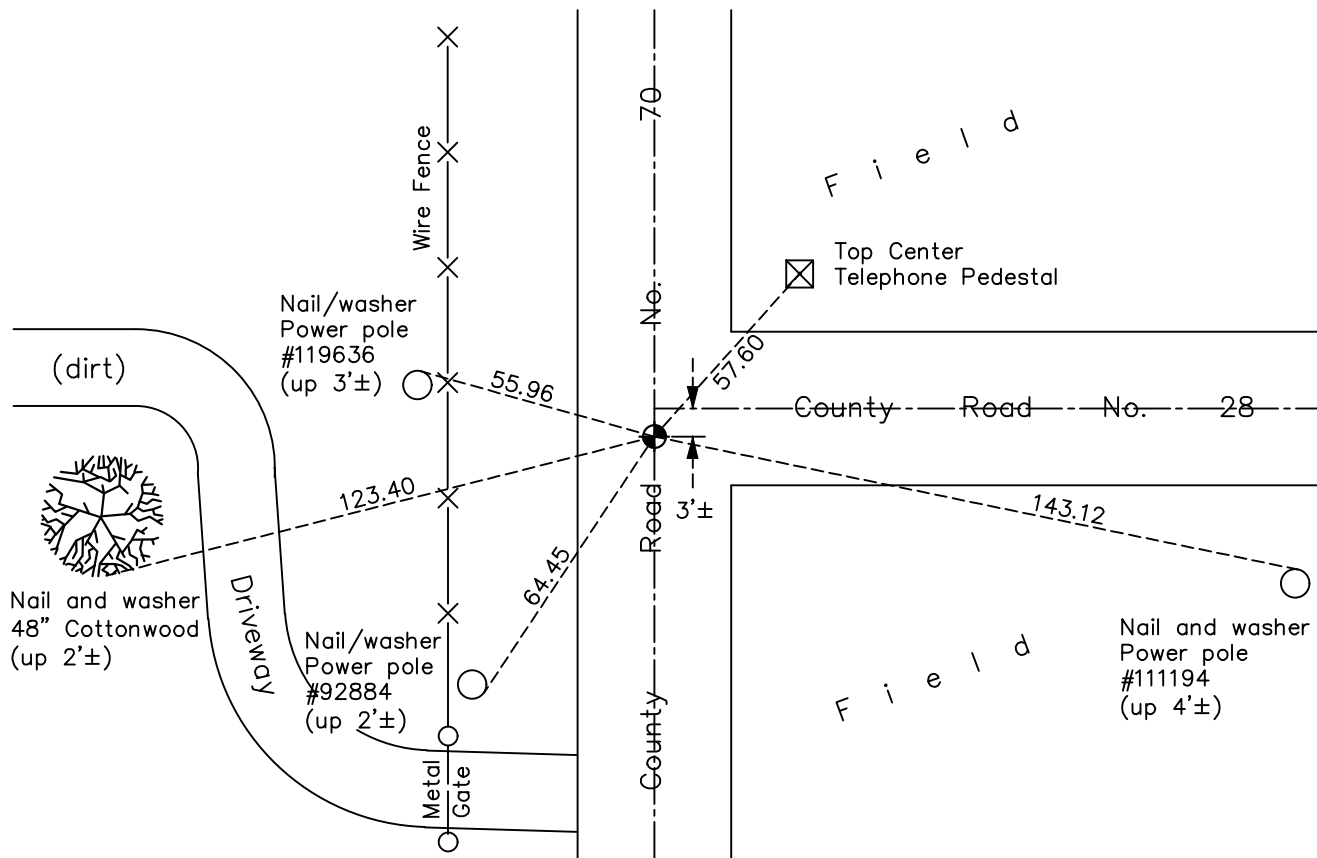
## East 1/4 Corner of Sec. 28 Township 34 Range 25

On the 23rd day of September, 1968, the described corner was evidenced by a temporary P.K. nail set using area resurvey

and to perpetuate the location of said corner, at the exact location thereof, a permanent marker was placed consisting of a cast iron monument

AND on the 4th day of November, 2022, said permanent marker was found flush and the ties were updated

Updated reference ties are as shown below.



Revision Date

2/01/2023

N.A.D. 1983 Coordinates  
(1996 Adjustment)

County Project Coordinates	
Northing	<u>235446.5472</u>
Easting	<u>452954.2859</u>
Date	<u>5/08/03</u>

I hereby certify that this United States public land survey monument record is correct and complete to the best of my knowledge and belief.

David Zieglmeier Date 3/1/23

David Zieglmeier Anoka County Surveyor  
Minnesota License Number 46179

# HISTORY OF GOVERNMENT CORNER

Page No. 62

County of Anoka

State of Minnesota

## East 1/4 Corner of Sec. 28 Township 34 Range 25

### **CORNER HISTORY:**

August 7, 1968 - Set temporary P.K. nail using area resurvey. Established ties to P.K. nail.

September 23, 1968 - Replaced temporary P.K. nail with a cast iron monument. Set P.K. nails 2' north and south. Updated ties.

July 1, 1970 - Found cast iron monument and updated ties.

June 5, 1974 - Found cast iron monument and updated ties.

May 9, 1977 - Found cast iron monument and updated ties.

May 27, 1981 - Found cast iron monument and updated ties.

July 24, 1984 - Found cast iron monument and updated ties.

June 12, 1987 - Found cast iron monument and updated ties.

July 24, 1989 - Found cast iron monument and updated ties.

July 20, 1992 - Found cast iron monument and updated ties.

July 16, 1997 - Found cast iron monument and updated ties.

May 8, 2003 - Found cast iron monument and updated ties. Established NAD 1983 (1996 adj.) Anoka County project coordinates by static GPS methods.

March 28, 2014 - Found cast iron monument. Verified position by VRS GPS methods. Updated ties.

June 8, 2018 - Found cast iron monument and updated ties.

August 14, 2018 - Set construction ties and removed cast iron monument prior to road construction.

September 4, 2018 - Set cast iron monument flush after road construction using construction ties. Verified location of corner by Static GPS methods. Updated ties.

September 9, 2020 - Found cast iron monument. Verified position by VRS GPS methods. Updated ties.

November 4, 2022 - Found cast iron monument flush, verified position by VRS GPS method and updated ties.