

CERTIFICATE OF LOCATION OF GOVERNMENT CORNER

County of Anoka

State of Minnesota

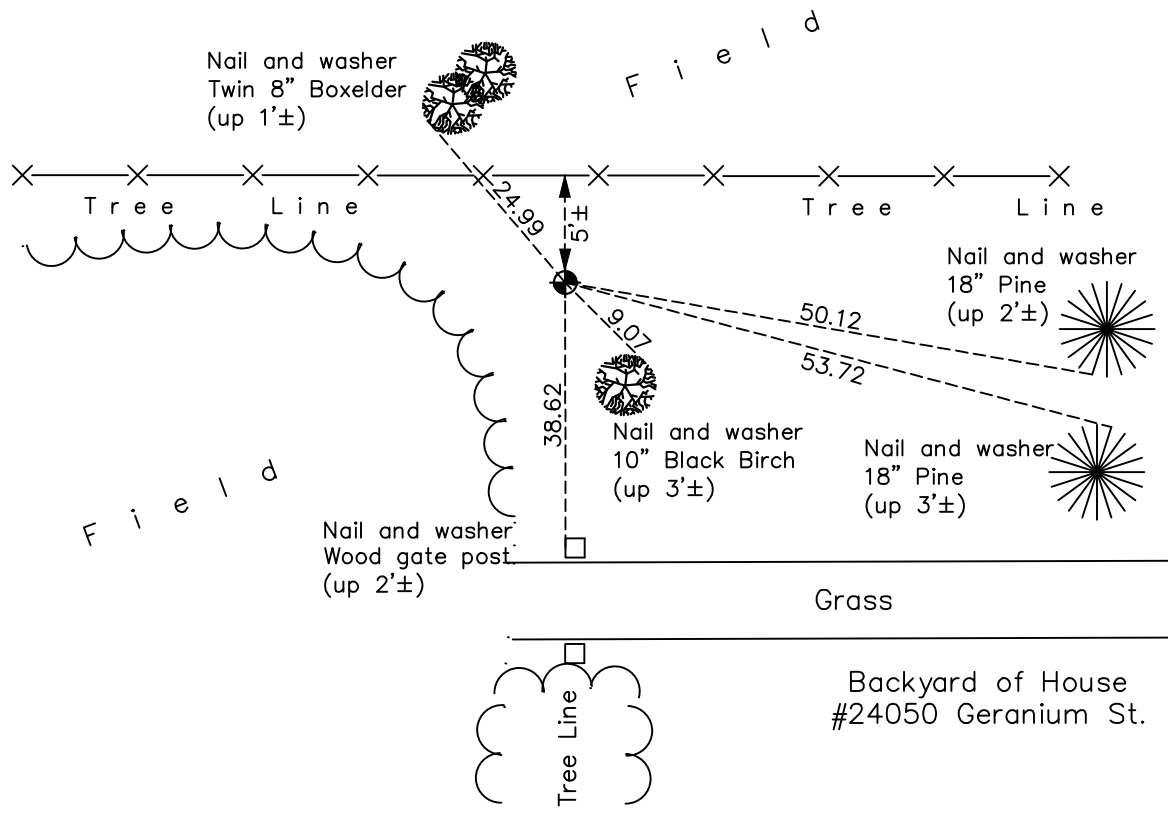
West 1/4 Corner of Sec. 25 Township 34 Range 25

On the 15th day of June, 1976, the described corner was evidenced by a 1" iron pipe

and to perpetuate the location of said corner, at the exact location thereof, a permanent marker was placed consisting of a cast iron monument

AND on the 3rd day of November, 2022, said permanent marker was found down 0.2'± and the ties were updated

Updated reference ties are as shown below.



Revision Date

2/01/2023

N.A.D. 1983 Coordinates
(1996 Adjustment)

County Project Coordinates

Northing 235425.9059

Easting 463452.9490

Date 4/30/03

I hereby certify that this United States public land survey monument record is correct and complete to the best of my knowledge and belief.

David Zieglmeier Date 3/1/23

David Zieglmeier Anoka County Surveyor

Minnesota License Number 46179

HISTORY OF GOVERNMENT CORNER

Page No. 64

County of Anoka

State of Minnesota

West 1/4 Corner of Sec. 25 Township 34 Range 25

CORNER HISTORY:

June 15, 1976 - Replaced 1" iron pipe found in section resurvey (4/12/1972) with a cast iron monument.
Updated ties.

May 9, 1977 - Found cast iron monument and updated ties.

August 26, 1980 - Found cast iron monument and updated ties.

July 26, 1984 - Found cast iron monument and updated ties.

June 11, 1987 - Found cast iron monument and updated ties.

July 23, 1992 - Found cast iron monument and updated ties.

July 18, 1997 - Found cast iron monument and updated ties.

April 30, 2003 - Found cast iron monument and updated ties. Established NAD 1983 (1996 adj.) Anoka County project coordinates by static GPS methods.

March 31, 2014 - Found cast iron monument and updated ties.

July 23, 2020 - Found cast iron monument down 0.2'± and updated ties.

November 3, 2022 - Found cast iron monument down 0.2'±, verified position by VRS GPS method and updated the ties.