

CERTIFICATE OF LOCATION OF GOVERNMENT CORNER

County of Anoka

State of Minnesota

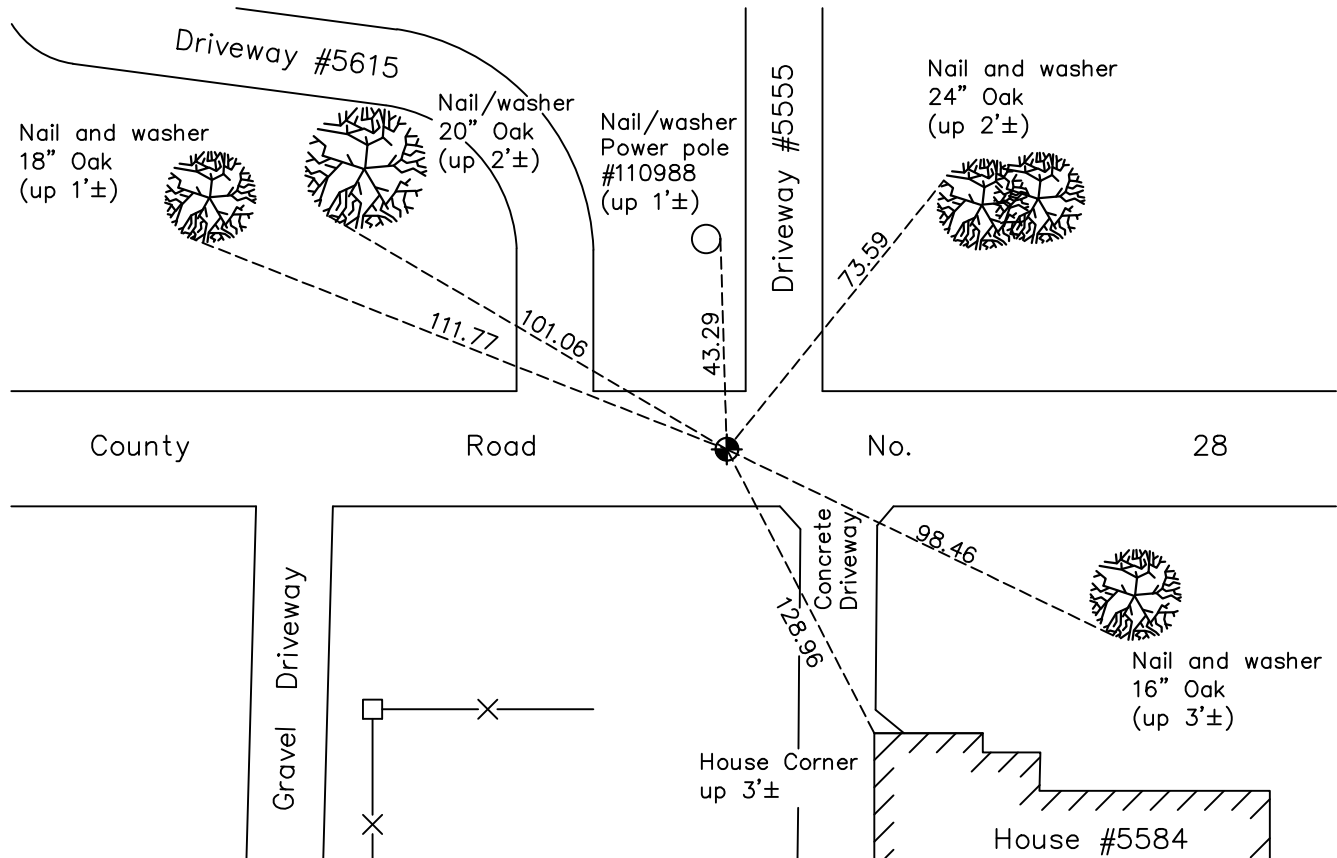
Northeast Corner of Sec. 35 Township 34 Range 25

On the 6th day of October, 1970, the described corner was evidenced by area resurvey

and to perpetuate the location of said corner, at the exact location thereof, a permanent marker was placed consisting of a cast iron monument

AND on the 10th day of November, 2022, said permanent marker was found down 0.1'± and the ties were updated

Updated reference ties are as shown below.



County

Road

No.

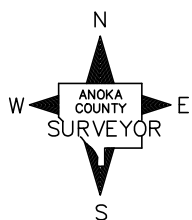
28

Gravel Driveway

Concrete Driveway

House Corner up 3'±

House #5584



N.A.D. 1983 Coordinates
(1996 Adjustment)

County Project Coordinates

Northing 232766.1423

Easting 463462.0456

Date 5/07/03

I hereby certify that this United States public land survey monument record is correct and complete to the best of my knowledge and belief.

David Zieglmeier Date 3/1/23

David Zieglmeier Anoka County Surveyor

Minnesota License Number 46179

Revision Date

2/01/2023

HISTORY OF GOVERNMENT CORNER

Page No. 67

County of Anoka

State of Minnesota

Northeast Corner of Sec. 35 Township 34 Range 25

CORNER HISTORY:

October 6, 1970 - Set cast iron monument flush using area resurvey. Established ties to monument.

June 11, 1974 - Found cast iron monument and updated ties.

May 9, 1977 - Found cast iron monument and updated ties.

August 26, 1980 - Found cast iron monument and updated ties.

July 20, 1984 - Found cast iron monument and updated ties.

June 11, 1987 - Found cast iron monument and updated ties.

July 20, 1992 - Found cast iron monument and updated ties.

July 15, 1997 - Found cast iron monument and updated ties.

May 7, 2003 - Found cast iron monument and updated ties. Established NAD 1983 (1996 adj.) Anoka County project coordinates by static GPS methods.

March 27, 2014 - Found cast iron monument. Verified position by VRS GPS methods. Updated ties.

July 23, 2020 - Found cast iron monument flush and updated ties.

November 10, 2022 - Found cast iron monument down $0.1' \pm$, verified position by VRS GPS method and updated the ties.